

Converting Colors

XYZ(50.4598, 51.0381, 46.2226)

Have a look what the booklet for
XYZ(50.4598, 51.0381, 46.2226)
contains.

XYZ(50.2490, 50.7983, 46.1864)	3
<i>Conversions</i>	4
<i>Details</i>	6
<i>Harmonies</i>	12
<i>Previews</i>	24
<i>Color Blindness Simulation</i>	28
<i>CSS Examples</i>	31

Color

**XYZ(50.2490, 50.7983,
46.1864)**

Conversions

Conversions Part 1

Format	Color
Hex	CEB9AC
RGB	206, 185, 172
RGB Percent	81%, 73%, 67%
CMY	0.1922, 0.2745, 0.3255
CMYK	0.00, 0.10, 0.17, 0.19
HSL	23°, 26%, 74%
HSV	23°, 17%, 81%
XYZ	50.2490, 50.7983, 46.1864
YIQ	189.7970, 16.6890, 0.4090

Conversions

Conversions Part 2

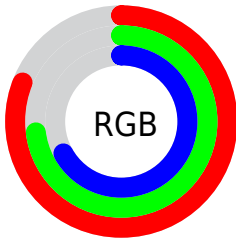
Format	Color
R _Y B	206, 193, 172
Decimal	13547948
CIE Lab	76.56, 5.35, 9.31
CIE LCh	77, 10.733, 60.132
Yxy	50.7983, 0.3413, 0.3450
Android (android.graphics.Color)	4291738028 (0xFFCEB9AC)
YUV	189.7970, -8.7739, 14.2100
Hunter-Lab	71.2729, 1.1189, 11.4698

Details

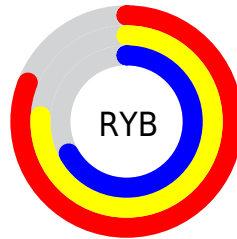
The XYZ color **50.2490, 50.7983, 46.1864** is a light color, and the websafe version is hex **CCCCCC**. A complement of this color would be **47.2236, 51.3658, 65.8187**, and the grayscale version is **48.8701, 51.4151, 55.9910**.

A 20% lighter version of the original color is **86.5604, 89.7166, 85.4279**, and **24.4039, 24.4379, 21.2001** is the 20% darker color. If you saturate the color by 10%, you get **45.8790, 44.9825, 35.7138**, and if you desaturate by 10%, it is **55.1666, 57.2176, 58.3558**.

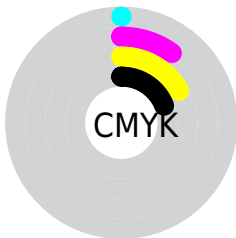
Distribution



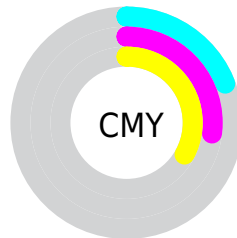
- Red (81%)
- Green (73%)
- Blue (67%)



- Red (81%)
- Yellow (76%)
- Blue (67%)



- Cyan (0%)
- Magenta (10%)
- Yellow (17%)
- Black (19%)



- Cyan (19%)
- Magenta (27%)
- Yellow (33%)

Brightness & Saturation Gradients

These gradients show how the XYZ color 50.2490, 50.7983, 46.1864 changes by changing the brightness by 10 percent. The first figure shows a shift by +10% for each color and the second figure -10%.

Similar to the brightness gradients but the following saturation gradients show a change of the XYZ color 50.2490, 50.7983, 46.1864 by changing the saturation by 10% instead.

■ 50.2490, 50.7983,
46.1864

■ 50.2490, 50.7983,
46.1864

378.0748,
389.7796, 387.8569

■ 35.8299, 36.0481,
32.0432

■ 89.7333, 91.3566,
85.8351

■ 24.4723, 24.4714,
21.1294

115.5292,
117.9334, 112.1777

■ 15.8110, 15.6836,
13.0265

145.8481,
149.2213, 143.4239

■ 9.4805, 9.3006,
7.3158

181.0554,
185.6046, 179.9921

■ 5.1155, 4.9377,
3.5790

221.5163,
227.4676, 222.3010

■ 2.3507, 2.2108,
1.3973

267.5963,

■ 0.8204, 0.7259,

275.1949, 270.7691

0.1396

319.6607,
329.1708, 325.8148

■ 0.0000, 0.0000,
0.0000

■ 50.2490, 50.7983,
46.1864

■ 50.2490, 50.7983,
46.1864

■ 45.8790, 44.9825,
35.7138

■ 55.1666, 57.2176,
58.3558

■ 42.0322, 39.7454,
26.8585

■ 60.6469, 64.2508,
72.2903

■ 38.6883, 35.0702,
19.5395

■ 66.7095, 71.9167,
88.0580

■ 35.8240, 30.9367,
13.6673

■ 73.3715, 80.2311,
105.7227

■ 33.4140, 27.3234,
9.1432

■ 77.2595, 87.8533,
107.4931

■ 31.4299, 24.2072,
5.8558

■ 79.2638, 91.8619,
108.1612

■ 29.8399, 21.5625,
3.6754

■ 28.6045, 19.3602,
2.4360

■ 28.2345, 18.6834,
2.1181

Harmonies

Analogous

The Analogous color harmony consists of three colors that are next to each other on the color wheel.



51.7315, 50.7983, 49.8954



50.2490, 50.7983, 46.1864



48.2733, 50.7983, 44.8844

Triad

The Triadic color harmony groups three colors that are evenly spaced from another and form a triangle on the color wheel.



50.2490, 50.7983, 46.1864



44.4894, 50.7983, 55.3364



50.2650, 50.7983, 65.5351

Complementary

The Complementary color scheme is a pair of colors which are on the opposite of each other on the color wheel.



50.2490, 50.7983, 46.1864



47.2236, 51.3658, 65.8187

Split Complementary

Split-complementary colors differ from the complementary color scheme. The scheme consists of three colors, the original color and two neighbors of the complement color.



48.2912, 50.7983, 67.2382



50.2490, 50.7983, 46.1864



44.9898, 50.7983, 61.1043

Square

The Square scheme is like the rectangle color scheme, but the four colors are evenly spaced on the color wheel.



50.2490, 50.7983, 46.1864



44.9813, 50.7983, 49.9370



46.3675, 50.7983, 65.5639



51.7409, 50.7983, 61.0567

Rectangle

The Rectangle color scheme consists of four colors that form a rectangle on the color wheel.



50.2490, 50.7983, 46.1864



46.9534, 50.7983, 45.4802



46.3675, 50.7983, 65.5639



49.6359, 50.7983, 66.4646

Sweetspot

The Sweet Spot groups the original color and five complimentary colors.



50.2504, 50.8006, 46.1875



90.6040, 94.2847, 97.6248



49.8920, 46.5017, 57.1113



19.2633, 20.0133, 20.5693



0.0000, 0.0000, 0.0000



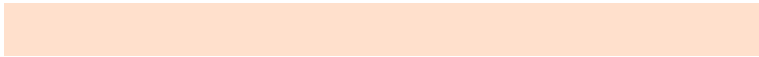
20.3446, 21.4041, 23.3091

Same Dimension

The Same Dimension uses a secret algorithm to generate beautiful new colors.



50.2504, 50.8006, 46.1875



78.6621, 78.6656, 68.1648



53.8962, 58.0922, 47.4027



11.5582, 11.9053, 11.7682



17.4729, 11.6788, 1.3333



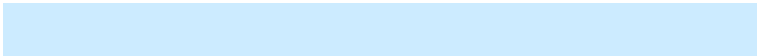
0.9742, 0.7481, 0.0931

Inverse Universe

The Inverse Universe completely reimagines the original color for something new.



47.2236, 51.3658, 65.8187



72.8019, 79.7575, 106.1654



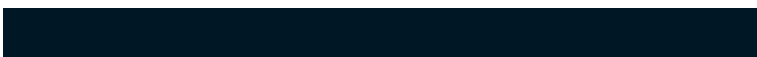
43.7846, 44.4879, 64.6724



11.1689, 11.9782, 14.2937



11.6465, 12.3170, 37.7198



0.6728, 0.7793, 1.9699

Previews

White Background



This preview shows how the XYZ color 50.2490, 50.7983, 46.1864 looks on a white background.

Color Contrast Check

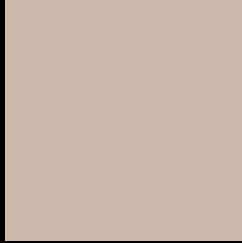
Large Text (above 18pt) WCAG AA × Fail

Any Text WCAG AA × Fail

Large Text (above 18pt) WCAG AAA × Fail

Any Text WCAG AAA × Fail

Black Background



This preview shows how the XYZ color 50.2490, 50.7983, 46.1864 looks on a black background.

Color Contrast Check

Large Text (above 18pt) WCAG AA ✓ Pass

Any Text WCAG AA ✓ Pass

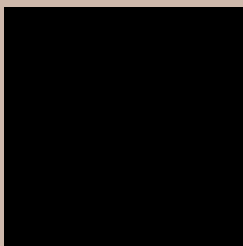
Large Text (above 18pt) WCAG AAA ✓ Pass

Any Text WCAG AAA ✓ Pass

If you want to check with other color combinations, try the [Color Contrast Checker](#).

XYZ 50.2490, 50.7983, 46.1864

Background



This preview shows how black text looks on a background with the XYZ color 50.2490, 50.7983, 46.1864.



This preview shows how white text looks on a background with the XYZ color 50.2490, 50.7983,

Color Blindness Simulation

Color vision deficiency is a very complex topic, and I could not describe the different causes any better than Wikipedia does, so if you want to learn more, you should check out their [article about color blindness](#).

Dichromacy



Original Color

50.2490, 50.7983, 46.1864

Protanopia

48.3882, 50.7582, 47.2914

Deuteranopia

51.7113, 50.6192, 46.5802



Tritanopia

52.7822, 50.5886, 59.2072

Trichromacy



Original Color

50.2490, 50.7983, 46.1864

Protanomaly

49.1326, 50.8371, 46.7581

Deuteranomaly

51.0547, 50.5857, 46.6083

Tritanomaly

51.7100, 50.4537, 54.0268

Monochromacy



Original Color

50.2490, 50.7983, 46.1864

Achromatopsia

48.9429, 51.4918, 56.0745

Achromatomaly

49.2954, 51.1211, 52.0690

CSS Examples

Text

The CSS property to change the color of the text to XYZ 50.2490, 50.7983, 46.1864 is called "color". The color property can be set on classes, ids or directly on the HTML element.

This example shows how text in the color `rgb(206, 185, 172)` looks like.

```
.text, #text, p{  
    color:rgb(206, 185, 172)  
}
```

If you want to add a text shadow in that color use the text-shadow property, you can generate a text shadow directly with our [CSS Text Shadow Generator](#).

Here you see how black text with a 4 pixel rgb(206, 185, 172) colored shadow looks like.

```
.shadow{ text-shadow: 4px 4px 2px rgb(206, 185, 172) }
```

Border

The CSS property to change the border of an element to XYZ 50.2490, 50.7983, 46.1864 is called "border". The border property can be set on classes, ids or directly on the HTML element.

This example shows the color as border, it can be applied via the CSS property "border" or "border-color".

```
.border, #border, table{ border:4px solid rgb(206, 185, 172) }
```


If only the border color should be changed use the property `border-color`.

```
.border{ border-color:rgb(206, 185, 172) }
```

If you want to add a box shadow in that color use:

Here you see how a box with a 4 pixel `rgb(206, 185, 172)` colored shadow looks like.

```
.boxshadow{ -moz-box-shadow:4px 4px 4px  
4px rgb(206, 185, 172); -webkit-box-  
shadow:4px 4px 4px 4px rgb(206, 185, 172);  
box-shadow:4px 4px 4px 4px rgb(206, 185,  
172) }
```

Background

The CSS property to change the background color of an element to XYZ 50.2490, 50.7983, 46.1864 is called "background". The background property can be set on classes, ids or directly on the HTML element.

```
.background, #background, body{  
background: rgb(206, 185, 172) }
```

If only the background color should be changed can be used:

```
.background{ background-color: rgb(206,  
185, 172) }
```

This example shows the color as background, it is applied via the CSS property "background".

To optimize and compress your CSS code, you can use our [online CSS compressor and optimizer](#) based on csstidy. If you want to create a linear or radial gradient as background or border, check our [CSS Gradient Generator](#).

Hey! You found this booklet interesting? Support Converting Colors with the new Membership Option!

The pro membership hides all ads, plus gives you double the colors in the color bucket, and more awesome pro features!

[Learn more, Memberships starting at \\$2.50/m!](#)

**Follow me
on Twitter!**

@ConvertingColor