

Converting Colors

XYZ(50.5191, 48.6294, 52.0955)

Have a look what the booklet for
XYZ(50.5191, 48.6294, 52.0955)
contains.

XYZ(50.5845, 48.7114, 52.0835)	3
<i>Conversions</i>	4
<i>Details</i>	6
<i>Harmonies</i>	12
<i>Previews</i>	24
<i>Color Blindness Simulation</i>	28
<i>CSS Examples</i>	31

Color

**XYZ(50.5845, 48.7114,
52.0835)**

Conversions

Conversions Part 1

Format	Color
Hex	D0B2B8
RGB	208, 178, 184
RGB Percent	82%, 70%, 72%
CMY	0.1843, 0.3019, 0.2784
CMYK	0.00, 0.14, 0.12, 0.18
HSL	348°, 24%, 76%
HSV	348°, 14%, 82%
XYZ	50.5845, 48.7114, 52.0835
YIQ	187.6540, 15.9540, 8.2260

Conversions

Conversions Part 2

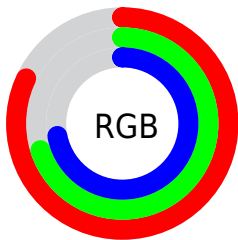
Format	Color
R _Y B	208, 178, 184
Decimal	13677240
CIE Lab	75.27, 11.78, 0.95
CIE LCh	75, 11.821, 4.610
Yxy	48.7114, 0.3342, 0.3218
Android (android.graphics.Color)	4291867320 (0xFFD0B2B8)
YUV	187.6540, -1.8014, 17.8434
Hunter-Lab	69.7936, 7.2333, 4.6103

Details

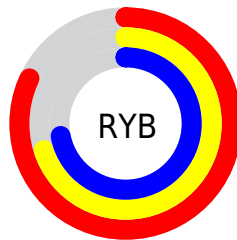
The XYZ color **50.5845, 48.7114, 52.0835** is a light color, and the websafe version is hex **CC9999**. A complement of this color would be **51.5785, 58.8421, 64.5192**, and the grayscale version is **47.6084, 50.0878, 54.5456**.

A 20% lighter version of the original color is **86.3910, 86.3969, 94.5611**, and **24.5672, 23.0782, 24.6324** is the 20% darker color. If you saturate the color by 10%, you get **45.1126, 40.3967, 42.1531**, and if you desaturate by 10%, it is **56.8919, 58.3675, 63.3062**.

Distribution



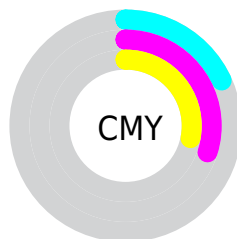
- Red (82%)
- Green (70%)
- Blue (72%)



- Red (82%)
- Yellow (70%)
- Blue (72%)



- Cyan (0%)
- Magenta (14%)
- Yellow (12%)
- Black (18%)





- Cyan (18%)
- Magenta (30%)
- Yellow (28%)

Brightness & Saturation Gradients


These gradients show how the XYZ color 50.5845, 48.7114, 52.0835 changes by changing the brightness by 10 percent. The first figure shows a shift by +10% for each color and the second figure -10%.


Similar to the brightness gradients but the following saturation gradients show a change of the XYZ color 50.5845, 48.7114, 52.0835 by changing the saturation by 10% instead.


 50.5845, 48.7114,
52.0835

 50.5845, 48.7114,
52.0835


379.3616,
381.6051, 411.7250

 36.0977, 34.3906,
36.6889


 90.2269, 88.2627,
94.6822

 24.6802, 23.1938,
24.6728


116.1133,
114.2619, 122.7234

 15.9664, 14.7367,
15.6167


146.5303,
144.9228, 155.8173

 9.5911, 8.6348,
9.1019

181.8433,
180.6297, 194.3823

 5.1888, 4.5038,
4.7100

222.4175,
221.7669, 238.8371

 2.3944, 1.9592,
2.0224

268.6184,

 0.8423, 0.5836,

268.7190, 289.6001

0.5690

320.8113,
321.8702, 347.0899

■ 0.0000, 0.0000,
0.0000

■ 50.5845, 48.7114,
52.0835

■ 50.5845, 48.7114,
52.0835

■ 45.1126, 40.3967,
42.1531

■ 56.8919, 58.3675,
63.3062

■ 40.4368, 33.3578,
33.4651

■ 64.0639, 69.4141,
75.8623

■ 36.5208, 27.5332,
25.9711

■ 72.1330, 81.9054,
89.7950

■ 33.3236, 22.8538,
19.6181

■ 79.1174, 91.8679,
104.4741

■ 30.8004, 19.2437,
14.3491

■ 79.8226, 92.1500,
108.1874

■ 28.9011, 16.6173,
10.1021

■ 27.5684, 14.8763,
6.8085

■ 26.7339, 13.9013,
4.3904

■ 26.4230, 13.5742,
3.3786

Harmonies

Analogous

The Analogous color harmony consists of three colors that are next to each other on the color wheel.



50.1723, 48.7114, 58.3301



50.5845, 48.7114, 52.0835



49.8193, 48.7114, 46.5351

Triad

The Triadic color harmony groups three colors that are evenly spaced from another and form a triangle on the color wheel.



50.5845, 48.7114, 52.0835



43.9685, 48.7114, 43.7968



44.5322, 48.7114, 64.5858

Complementary

The Complementary color scheme is a pair of colors which are on the opposite of each other on the color wheel.



50.5845, 48.7114, 52.0835



51.5785, 58.8421, 64.5192

Split Complementary

Split-complementary colors differ from the complementary color scheme. The scheme consists of three colors, the original color and two neighbors of the complement color.



42.9481, 48.7114, 60.1211



50.5845, 48.7114, 52.0835



42.6298, 48.7114, 48.0769

Square

The Square scheme is like the rectangle color scheme, but the four colors are evenly spaced on the color wheel.



50.5845, 48.7114, 52.0835



45.9641, 48.7114, 41.9945



42.2621, 48.7114, 54.0050



46.6350, 48.7114, 65.8665

Rectangle

The Rectangle color scheme consists of four colors that form a rectangle on the color wheel.



50.5845, 48.7114, 52.0835



48.7580, 48.7114, 43.8790



42.2621, 48.7114, 54.0050



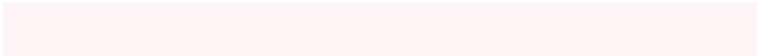
43.9236, 48.7114, 63.3913

Sweetspot

The Sweet Spot groups the original color and five complimentary colors.



50.5859, 48.7136, 52.0845



90.5956, 93.1493, 101.0702



51.6642, 48.9537, 66.4009



19.2173, 19.6707, 21.3263



0.0000, 0.0000, 0.0000



20.3446, 21.4041, 23.3091

Same Dimension

The Same Dimension uses a secret algorithm to generate beautiful new colors.



50.5859, 48.7136, 52.0845



77.6562, 73.3562, 77.9957



51.8201, 52.1668, 49.4602



11.9040, 11.8463, 12.7702



16.4960, 8.4712, 2.2522



0.9512, 0.4852, 0.2777

Inverse Universe

The Inverse Universe completely reimagines the original color for something new.



50.5859, 48.7136, 52.0845



77.6562, 73.3562, 77.9957



50.1704, 54.8674, 67.6211



11.9040, 11.8463, 12.7702



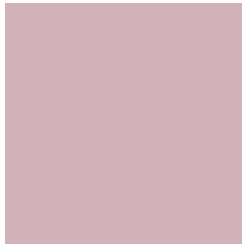
16.4960, 8.4712, 2.2522



0.9512, 0.4852, 0.2777

Previews

White Background



This preview shows how the XYZ color 50.5845, 48.7114, 52.0835 looks on a white background.

Color Contrast Check

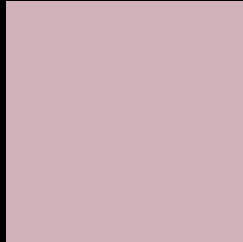
Large Text (above 18pt) WCAG AA × Fail

Any Text WCAG AA × Fail

Large Text (above 18pt) WCAG AAA × Fail

Any Text WCAG AAA × Fail

Black Background



This preview shows how the XYZ color 50.5845, 48.7114, 52.0835 looks on a black background.

Color Contrast Check

Large Text (above 18pt) WCAG AA ✓ Pass

Any Text WCAG AA ✓ Pass

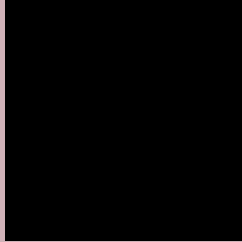
Large Text (above 18pt) WCAG AAA ✓ Pass

Any Text WCAG AAA ✓ Pass

If you want to check with other color combinations, try the [Color Contrast Checker](#).

XYZ 50.5845, 48.7114, 52.0835

Background



This preview shows how black text looks on a background with the XYZ color 50.5845, 48.7114, 52.0835.



This preview shows how white text looks on a background with the XYZ color 50.5845, 48.7114,

Color Blindness Simulation

Color vision deficiency is a very complex topic, and I could not describe the different causes any better than Wikipedia does, so if you want to learn more, you should check out their [article about color blindness](#).

Dichromacy



Original Color

50.5845, 48.7114, 52.0835

Protanopia

47.1651, 49.0201, 54.5529

Deuteranopia

49.8748, 48.9406, 52.1652



Tritanopia

51.4206, 48.7612, 55.9919

Trichromacy



Original Color

50.5845, 48.7114, 52.0835

Protanomaly

48.2033, 48.6459, 53.8627

Deuteranomaly

49.9487, 48.6800, 52.1110

Tritanomaly

51.0937, 48.6304, 54.2706

Monochromacy



Original Color

50.5845, 48.7114, 52.0835

Achromatopsia

47.7994, 50.2886, 54.7643

Achromatomaly

48.6158, 49.4709, 54.0002

CSS Examples

Text

The CSS property to change the color of the text to XYZ 50.5845, 48.7114, 52.0835 is called "color". The color property can be set on classes, ids or directly on the HTML element.

This example shows how text in the color `rgb(208, 178, 184)` looks like.

```
.text, #text, p{  
    color:rgb(208, 178, 184)  
}
```

If you want to add a text shadow in that color use the text-shadow property, you can generate a text shadow directly with our [CSS Text Shadow Generator](#).

Here you see how black text with a 4 pixel rgb(208, 178, 184) colored shadow looks like.

```
.shadow{ text-shadow: 4px 4px 2px rgb(208, 178, 184) }
```

Border

The CSS property to change the border of an element to XYZ 50.5845, 48.7114, 52.0835 is called "border". The border property can be set on classes, ids or directly on the HTML element.

This example shows the color as border, it can be applied via the CSS property "border" or "border-color".

```
.border, #border, table{ border:4px solid rgb(208, 178, 184) }
```


If only the border color should be changed use the property `border-color`.

```
.border{ border-color:rgb(208, 178, 184) }
```

If you want to add a box shadow in that color use:

Here you see how a box with a 4 pixel `rgb(208, 178, 184)` colored shadow looks like.

```
.boxshadow{ -moz-box-shadow:4px 4px 4px 4px rgb(208, 178, 184); -webkit-box-shadow:4px 4px 4px 4px rgb(208, 178, 184); box-shadow:4px 4px 4px 4px rgb(208, 178, 184) }
```

Background

The CSS property to change the background color of an element to XYZ 50.5845, 48.7114, 52.0835 is called "background". The background property can be set on classes, ids or directly on the HTML element.

```
.background, #background, body{  
background: rgb(208, 178, 184) }
```

If only the background color should be changed can be used:

```
.background{ background-color: rgb(208,  
178, 184) }
```

This example shows the color as background, it is applied via the CSS property "background".

To optimize and compress your CSS code, you can use our [online CSS compressor and optimizer](#) based on csstidy. If you want to create a linear or radial gradient as background or border, check our [CSS Gradient Generator](#).

Hey! You found this booklet interesting? Support Converting Colors with the new Membership Option!

The pro membership hides all ads, plus gives you double the colors in the color bucket, and more awesome pro features!

[Learn more, Memberships starting at \\$2.50/m!](#)

**Follow me
on Twitter!**

@ConvertingColor