

Converting Colors

XYZ(50.5371, 48.1694, 45.1636)

Have a look what the booklet for
XYZ(50.5371, 48.1694, 45.1636)
contains.

XYZ(50.6076, 48.2871, 45.1811)	3
<i>Conversions</i>	4
<i>Details</i>	6
<i>Harmonies</i>	12
<i>Previews</i>	24
<i>Color Blindness Simulation</i>	28
<i>CSS Examples</i>	31

Color

**XYZ(50.6076, 48.2871,
45.1811)**

Conversions

Conversions Part 1

Format	Color
Hex	D6B0AB
RGB	214, 176, 171
RGB Percent	84%, 69%, 67%
CMY	0.1608, 0.3098, 0.3294
CMYK	0.00, 0.18, 0.20, 0.16
HSL	7°, 34%, 75%
HSV	7°, 20%, 84%
XYZ	50.6076, 48.2871, 45.1811
YIQ	186.7920, 24.2530, 6.5010

Conversions

Conversions Part 2

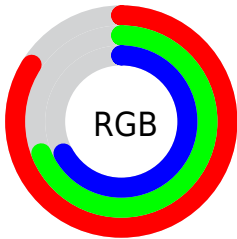
Format	Color
RYB	214, 177, 171
Decimal	14069931
CIELab	75.01, 12.99, 7.73
CIELCh	75, 15.117, 30.761
Yxy	48.2871, 0.3513, 0.3352
Android (android.graphics.Color)	4292260011 (0xFFD6B0AB)
YUV	186.7920, -7.7855, 23.8614
Hunter-Lab	69.4889, 8.3929, 10.0924

Details

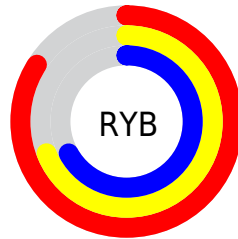
The XYZ color **50.6076, 48.2871, 45.1811** is a light color, and the websafe version is hex **CC9999**. A complement of this color would be **51.7322, 59.1124, 72.3020**, and the grayscale version is **47.1509, 49.6064, 54.0214**.

A 20% lighter version of the original color is **83.8241, 84.4642, 83.8367**, and **24.7108, 22.8688, 20.5645** is the 20% darker color. If you saturate the color by 10%, you get **45.2778, 40.6317, 34.1424**, and if you desaturate by 10%, it is **56.7868, 57.1119, 58.1334**.

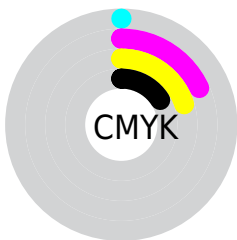
Distribution



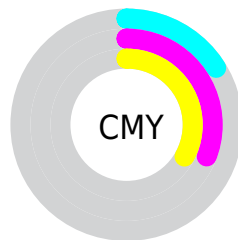
- Red (84%)
- Green (69%)
- Blue (67%)



- Red (84%)
- Yellow (69%)
- Blue (67%)



- Cyan (0%)
- Magenta (18%)
- Yellow (20%)
- Black (16%)





- Cyan (16%)
- Magenta (31%)
- Yellow (33%)

Brightness & Saturation Gradients


These gradients show how the XYZ color 50.6076, 48.2871, 45.1811 changes by changing the brightness by 10 percent. The first figure shows a shift by +10% for each color and the second figure -10%.


Similar to the brightness gradients but the following saturation gradients show a change of the XYZ color 50.6076, 48.2871, 45.1811 by changing the saturation by 10% instead.


 50.6076, 48.2871,
45.1811

 50.6076, 48.2871,
45.1811


379.4501,
379.9290, 383.6880

 36.1162, 34.0543,
31.2561

 90.2609, 87.6317,
84.3134

 24.6945, 22.9353,
20.5338


116.1535,
113.5123, 110.3579

 15.9771, 14.5458,
12.5958


146.5773,
144.0443, 141.2792

 9.5987, 8.5012,
7.0234

181.8975,
179.6121, 177.4959

 5.1939, 4.4173,
3.3980

222.4795,
220.6001, 219.4266

 2.3974, 1.9096,
1.3013

268.6887,

 0.8438, 0.5542,

267.3926, 267.4899

0.0629

320.8905,
320.3741, 322.1041

■ 0.0000, 0.0000,
0.0000

■ 50.6076, 48.2871,
45.1811

■ 50.6076, 48.2871,
45.1811

■ 45.2778, 40.6317,
34.1424

■ 56.7868, 57.1119,
58.1334

■ 40.7565, 34.0904,
24.9236

■ 63.8462, 67.1455,
73.0808

■ 37.0049, 28.6131,
17.4276

■ 71.8200, 78.4335,
90.1038

■ 33.9798, 24.1433,
11.5473

■ 80.4804, 90.9136,
107.9141

■ 31.6337, 20.6194,
7.1633

■ 81.5417, 93.0362,
108.2678

■ 29.9130, 17.9728,
4.1398

■ 28.7562, 16.1256,
2.3162

■ 28.0773, 14.9874,
1.4130

Harmonies

Analogous

The Analogous color harmony consists of three colors that are next to each other on the color wheel.



51.4080, 48.2871, 52.3750



50.6076, 48.2871, 45.1811



48.5363, 48.2871, 40.4001

Triad

The Triadic color harmony groups three colors that are evenly spaced from another and form a triangle on the color wheel.



50.6076, 48.2871, 45.1811



41.4194, 48.2871, 45.4976



45.9659, 48.2871, 69.2818

Complementary

The Complementary color scheme is a pair of colors which are on the opposite of each other on the color wheel.



50.6076, 48.2871, 45.1811



51.7322, 59.1124, 72.3020

Split Complementary

Split-complementary colors differ from the complementary color scheme. The scheme consists of three colors, the original color and two neighbors of the complement color.



43.3522, 48.2871, 66.9822



50.6076, 48.2871, 45.1811



40.7917, 48.2871, 52.7784

Square

The Square scheme is like the rectangle color scheme, but the four colors are evenly spaced on the color wheel.



50.6076, 48.2871, 45.1811



43.2348, 48.2871, 40.5696



41.4853, 48.2871, 60.7377



48.6630, 48.2871, 66.7454

Rectangle

The Rectangle color scheme consists of four colors that form a rectangle on the color wheel.



50.6076, 48.2871, 45.1811



46.7527, 48.2871, 38.9587



41.4853, 48.2871, 60.7377



45.0488, 48.2871, 69.0467

Sweetspot

The Sweet Spot groups the original color and five complimentary colors.



50.6089, 48.2893, 45.1821



88.5214, 90.7289, 95.0515



53.8905, 48.0608, 67.2138



18.8015, 19.2124, 20.0367



0.0000, 0.0000, 0.0000



20.3446, 21.4041, 23.3091

Same Dimension

The Same Dimension uses a secret algorithm to generate beautiful new colors.



50.6089, 48.2893, 45.1821



71.8236, 66.8830, 60.0454



55.0036, 57.0787, 46.6470



12.5385, 12.6512, 12.9418



17.0100, 9.1373, 0.8671



1.0658, 0.6307, 0.0656

Inverse Universe

The Inverse Universe completely reimagines the original color for something new.



51.7322, 59.1124, 72.3020



73.7767, 85.7227, 107.2654



46.9587, 49.5655, 70.7109



12.6631, 13.8496, 15.9433



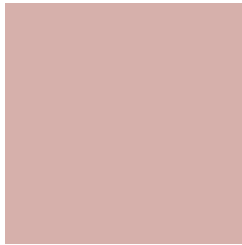
18.3978, 25.0573, 42.3200



1.1454, 1.5828, 2.5645

Previews

White Background



This preview shows how the XYZ color 50.6076, 48.2871, 45.1811 looks on a white background.

Color Contrast Check

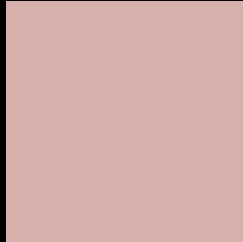
Large Text (above 18pt) WCAG AA × Fail

Any Text WCAG AA × Fail

Large Text (above 18pt) WCAG AAA × Fail

Any Text WCAG AAA × Fail

Black Background



This preview shows how the XYZ color 50.6076, 48.2871, 45.1811 looks on a black background.

Color Contrast Check

Large Text (above 18pt) WCAG AA ✓ Pass

Any Text WCAG AA ✓ Pass

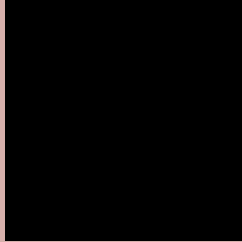
Large Text (above 18pt) WCAG AAA ✓ Pass

Any Text WCAG AAA ✓ Pass

If you want to check with other color combinations, try the [Color Contrast Checker](#).

XYZ 50.6076, 48.2871, 45.1811

Background



This preview shows how black text looks on a background with the XYZ color 50.6076, 48.2871, 45.1811.



This preview shows how white text looks on a background with the XYZ color 50.6076, 48.2871,

45.1811.

Color Blindness Simulation

Color vision deficiency is a very complex topic, and I could not describe the different causes any better than Wikipedia does, so if you want to learn more, you should check out their [article about color blindness](#).

Dichromacy



Original Color

50.6076, 48.2871, 45.1811

Protanopia

46.1136, 48.3233, 47.4543

Deuteranopia

49.2835, 48.1910, 45.2323



Tritanopia

52.4246, 48.4589, 53.6041

Trichromacy



Original Color

50.6076, 48.2871, 45.1811

Protanomaly

47.7170, 48.2459, 46.8418

Deuteranomaly

49.6512, 48.0862, 45.1927

Tritanomaly

51.6948, 48.4432, 50.3419

Monochromacy



Original Color

50.6076, 48.2871, 45.1811

Achromatopsia

47.2335, 49.6933, 54.1160

Achromatomaly

48.2999, 49.0735, 50.6425

CSS Examples

Text

The CSS property to change the color of the text to XYZ 50.6076, 48.2871, 45.1811 is called "color". The color property can be set on classes, ids or directly on the HTML element.

This example shows how text in the color rgb(214, 176, 171) looks like.

```
.text, #text, p{  
    color:rgb(214, 176, 171)  
}
```

If you want to add a text shadow in that color use the text-shadow property, you can generate a text shadow directly with our [CSS Text Shadow Generator](#).

Here you see how black text with a 4 pixel rgb(214, 176, 171) colored shadow looks like.

```
.shadow{ text-shadow: 4px 4px 2px rgb(214, 176, 171) }
```

Border

The CSS property to change the border of an element to XYZ 50.6076, 48.2871, 45.1811 is called "border". The border property can be set on classes, ids or directly on the HTML element.

This example shows the color as border, it can be applied via the CSS property "border" or "border-color".

```
.border, #border, table{ border:4px solid rgb(214, 176, 171) }
```


If only the border color should be changed use the property `border-color`.

```
.border{ border-color:rgb(214, 176, 171) }
```

If you want to add a box shadow in that color use:

Here you see how a box with a 4 pixel `rgb(214, 176, 171)` colored shadow looks like.

```
.boxshadow{ -moz-box-shadow:4px 4px 4px  
4px rgb(214, 176, 171); -webkit-box-  
shadow:4px 4px 4px 4px rgb(214, 176, 171);  
box-shadow:4px 4px 4px 4px rgb(214, 176,  
171) }
```

Background

The CSS property to change the background color of an element to XYZ 50.6076, 48.2871, 45.1811 is called "background". The background property can be set on classes, ids or directly on the HTML element.

```
.background, #background, body{  
background: rgb(214, 176, 171) }
```

If only the background color should be changed can be used:

```
.background{ background-color: rgb(214,  
176, 171) }
```

This example shows the color as background, it is applied via the CSS property "background".

To optimize and compress your CSS code, you can use our [online CSS compressor and optimizer](#) based on csstidy. If you want to create a linear or radial gradient as background or border, check our [CSS Gradient Generator](#).

Hey! You found this booklet interesting? Support Converting Colors with the new Membership Option!

The pro membership hides all ads, plus gives you double the colors in the color bucket, and more awesome pro features!

[Learn more, Memberships starting at \\$2.50/m!](#)

**Follow me
on Twitter!**

@ConvertingColor