

Converting Colors

XYZ(50.5772, 50.4084, 52.2057)

Have a look what the booklet for
XYZ(50.5772, 50.4084, 52.2057)
contains.

XYZ(50.6941, 50.5790, 52.4383)	3
<i>Conversions</i>	4
<i>Details</i>	6
<i>Harmonies</i>	12
<i>Previews</i>	24
<i>Color Blindness Simulation</i>	28
<i>CSS Examples</i>	31

Color

**XYZ(50.6941, 50.5790,
52.4383)**

Conversions

Conversions Part 1

Format	Color
Hex	CCB8B8
RGB	204, 184, 184
RGB Percent	80%, 72%, 72%
CMY	0.2000, 0.2784, 0.2784
CMYK	0.00, 0.10, 0.10, 0.20
HSL	0°, 16%, 76%
HSV	0°, 10%, 80%
XYZ	50.6941, 50.5790, 52.4383
YIQ	189.9800, 11.9200, 4.2400

Conversions

Conversions Part 2

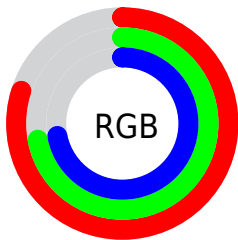
Format	Color
R _Y B	204, 184, 184
Decimal	13416632
CIE Lab	76.42, 7.11, 2.58
CIE LCh	76, 7.564, 19.956
Yxy	50.5790, 0.3298, 0.3291
Android (android.graphics.Color)	4291606712 (0xFFCCB8B8)
YUV	189.9800, -2.9481, 12.2955
Hunter-Lab	71.1189, 2.7780, 6.0668

Details

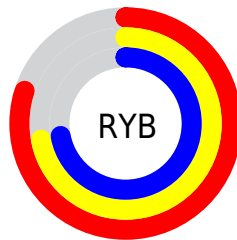
The XYZ color **50.6941, 50.5790, 52.4383** is a light color, and the websafe version is hex **CCCCCC**. A complement of this color would be **52.2591, 57.7349, 65.5171**, and the grayscale version is **48.9448, 51.4938, 56.0767**.

A 20% lighter version of the original color is **88.1283, 89.8714, 95.1401**, and **24.7907, 24.3553, 24.8672** is the 20% darker color. If you saturate the color by 10%, you get **44.7725, 41.9143, 40.6640**, and if you desaturate by 10%, it is **57.5379, 60.5933, 66.0427**.

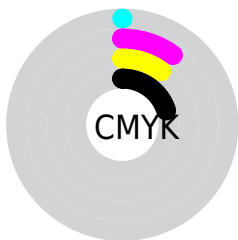
Distribution



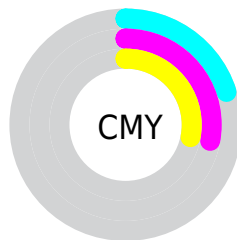
- Red (80%)
- Green (72%)
- Blue (72%)



- Red (80%)
- Yellow (72%)
- Blue (72%)



- Cyan (0%)
- Magenta (10%)
- Yellow (10%)
- Black (20%)





- Cyan (20%)
- Magenta (28%)
- Yellow (28%)

Brightness & Saturation Gradients


These gradients show how the XYZ color 50.6941, 50.5790, 52.4383 changes by changing the brightness by 10 percent. The first figure shows a shift by +10% for each color and the second figure -10%.


Similar to the brightness gradients but the following saturation gradients show a change of the XYZ color 50.6941, 50.5790, 52.4383 by changing the saturation by 10% instead.


 50.6941, 50.5790,
52.4383

 50.6941, 50.5790,
52.4383

379.7814,
388.9259, 413.1314

 36.1853, 35.8737,
36.9699


 90.3881, 91.0322,
95.2105

 24.7481, 24.3366,
24.8886


116.3040,
117.5488, 123.3513

 16.0172, 15.5835,
15.7758

146.7530,
148.7713, 156.5534

 9.6273, 9.2299,
9.2130

182.1004,
185.0841, 195.2353

 5.2129, 4.8915,
4.7817

222.7116,
226.8715, 239.8155

 2.4087, 2.1837,
2.0633

268.9519,

 0.8495, 0.7111,

274.5180, 290.7125

0.5938

321.1867,
328.4080, 348.3450

■ 0.0000, 0.0000,
0.0000

■ 50.6941, 50.5790,
52.4383

■ 50.6941, 50.5790,
52.4383

■ 44.7725, 41.9143,
40.6640

■ 57.5379, 60.5933,
66.0427

■ 39.7296, 34.5352,
30.6386

■ 65.3364, 72.0043,
81.5470

■ 35.5248, 28.3826,
22.2797

■ 74.1258, 84.8652,
99.0216

■ 32.1129, 23.3899,
15.4970

■ 78.7122, 91.5775,
108.1354

■ 29.4441, 19.4845,
10.1918

■ 27.4630, 16.5855,
6.2541

■ 26.1068, 14.6007,
3.5585

■ 25.3007, 13.4211,
1.9568

■ 24.9091, 12.8478,
1.1785

Harmonies

Analogous

The Analogous color harmony consists of three colors that are next to each other on the color wheel.



50.8211, 50.5790, 56.4511



50.6941, 50.5790, 52.4383



49.8573, 50.5790, 49.2834

Triad

The Triadic color harmony groups three colors that are evenly spaced from another and form a triangle on the color wheel.



50.6941, 50.5790, 52.4383



46.0077, 50.5790, 50.1786



47.5978, 50.5790, 63.1612

Complementary

The Complementary color scheme is a pair of colors which are on the opposite of each other on the color wheel.



50.6941, 50.5790, 52.4383



52.2591, 57.7349, 65.5171

Split Complementary

Split-complementary colors differ from the complementary color scheme. The scheme consists of three colors, the original color and two neighbors of the complement color.



46.3334, 50.5790, 61.2969



50.6941, 50.5790, 52.4383



45.4274, 50.5790, 53.7154

Square

The Square scheme is like the rectangle color scheme, but the four colors are evenly spaced on the color wheel.



50.6941, 50.5790, 52.4383



47.1452, 50.5790, 48.0241



45.5454, 50.5790, 57.7923



49.0145, 50.5790, 62.7777

Rectangle

The Rectangle color scheme consists of four colors that form a rectangle on the color wheel.



50.6941, 50.5790, 52.4383



49.0185, 50.5790, 48.0278



45.5454, 50.5790, 57.7923



47.1413, 50.5790, 62.7732

Sweetspot

The Sweet Spot groups the original color and five complimentary colors.



50.6955, 50.5812, 52.4394



91.4509, 94.7336, 101.7446



52.9422, 51.4788, 64.2735



19.3736, 19.9833, 21.3786



0.0000, 0.0000, 0.0000



20.3446, 21.4041, 23.3091

Same Dimension

The Same Dimension uses a secret algorithm to generate beautiful new colors.



50.6955, 50.5812, 52.4394



81.5135, 80.1929, 81.9883



52.8461, 54.8824, 53.1562



11.2125, 11.2140, 11.6530



15.6738, 8.0806, 0.7336



0.8086, 0.4170, 0.0379

Inverse Universe

The Inverse Universe completely reimagines the original color for something new.



52.2591, 57.7349, 65.5171



84.6730, 94.6480, 108.4139



49.9588, 53.1344, 64.7503



11.5432, 12.7267, 14.4185



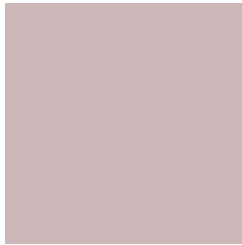
20.4458, 29.9156, 40.6530



1.0548, 1.5434, 2.0973

Previews

White Background



This preview shows how the XYZ color 50.6941, 50.5790, 52.4383 looks on a white background.

Color Contrast Check

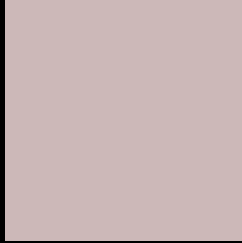
Large Text (above 18pt) WCAG AA × Fail

Any Text WCAG AA × Fail

Large Text (above 18pt) WCAG AAA × Fail

Any Text WCAG AAA × Fail

Black Background



This preview shows how the XYZ color 50.6941, 50.5790, 52.4383 looks on a black background.

Color Contrast Check

Large Text (above 18pt) WCAG AA ✓ Pass

Any Text WCAG AA ✓ Pass

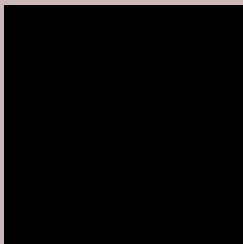
Large Text (above 18pt) WCAG AAA ✓ Pass

Any Text WCAG AAA ✓ Pass

If you want to check with other color combinations, try the [Color Contrast Checker](#).

XYZ 50.6941, 50.5790, 52.4383

Background



This preview shows how black text looks on a background with the XYZ color 50.6941, 50.5790, 52.4383.



This preview shows how white text looks on a background with the XYZ color 50.6941, 50.5790,

Color Blindness Simulation

Color vision deficiency is a very complex topic, and I could not describe the different causes any better than Wikipedia does, so if you want to learn more, you should check out their [article about color blindness](#).

Dichromacy



Original Color

50.6941, 50.5790, 52.4383

Protanopia

48.5844, 50.7181, 53.6833

Deuteranopia

51.3921, 50.3265, 52.3527



Tritanopia

52.1454, 50.5632, 59.2359

Trichromacy



Original Color

50.6941, 50.5790, 52.4383

Protanomaly

49.2922, 50.7792, 53.1023

Deuteranomaly

51.3173, 50.5931, 52.4081

Tritanomaly

51.6248, 50.6519, 56.9250

Monochromacy



Original Color

50.6941, 50.5790, 52.4383

Achromatopsia

48.9429, 51.4918, 56.0745

Achromatomaly

49.5660, 51.1994, 54.8470

CSS Examples

Text

The CSS property to change the color of the text to XYZ 50.6941, 50.5790, 52.4383 is called "color". The color property can be set on classes, ids or directly on the HTML element.

This example shows how text in the color `rgb(204, 184, 184)` looks like.

```
.text, #text, p{  
    color:rgb(204, 184, 184)  
}
```

If you want to add a text shadow in that color use the text-shadow property, you can generate a text shadow directly with our [CSS Text Shadow Generator](#).

Here you see how black text with a 4 pixel rgb(204, 184, 184) colored shadow looks like.

```
.shadow{ text-shadow: 4px 4px 2px rgb(204, 184, 184) }
```

Border

The CSS property to change the border of an element to XYZ 50.6941, 50.5790, 52.4383 is called "border". The border property can be set on classes, ids or directly on the HTML element.

This example shows the color as border, it can be applied via the CSS property "border" or "border-color".

```
.border, #border, table{ border:4px solid rgb(204, 184, 184) }
```


If only the border color should be changed use the property `border-color`.

```
.border{ border-color:rgb(204, 184, 184) }
```

If you want to add a box shadow in that color use:

Here you see how a box with a 4 pixel `rgb(204, 184, 184)` colored shadow looks like.

```
.boxshadow{ -moz-box-shadow:4px 4px 4px  
4px rgb(204, 184, 184); -webkit-box-  
shadow:4px 4px 4px 4px rgb(204, 184, 184);  
box-shadow:4px 4px 4px 4px rgb(204, 184,  
184) }
```

Background

The CSS property to change the background color of an element to XYZ 50.6941, 50.5790, 52.4383 is called "background". The background property can be set on classes, ids or directly on the HTML element.

```
.background, #background, body{  
background: rgb(204, 184, 184) }
```

If only the background color should be changed can be used:

```
.background{ background-color: rgb(204,  
184, 184) }
```

This example shows the color as background, it is applied via the CSS property "background".

To optimize and compress your CSS code, you can use our [online CSS compressor and optimizer](#) based on csstidy. If you want to create a linear or radial gradient as background or border, check our [CSS Gradient Generator](#).

Hey! You found this booklet interesting? Support Converting Colors with the new Membership Option!

The pro membership hides all ads, plus gives you double the colors in the color bucket, and more awesome pro features!

[Learn more, Memberships starting at \\$2.50/m!](#)

**Follow me
on Twitter!**

@ConvertingColor