

Converting Colors

XYZ(50.6858, 49.2508, 53.0523)

Have a look what the booklet for
XYZ(50.6858, 49.2508, 53.0523)
contains.

XYZ(50.9163, 49.4531, 53.3162)	3
<i>Conversions</i>	4
<i>Details</i>	6
<i>Harmonies</i>	12
<i>Previews</i>	24
<i>Color Blindness Simulation</i>	28
<i>CSS Examples</i>	31

Color

**XYZ(50.9163, 49.4531,
53.3162)**

Conversions

Conversions Part 1

Format	Color
Hex	CFB4BA
RGB	207, 180, 186
RGB Percent	81%, 71%, 73%
CMY	0.1882, 0.2941, 0.2706
CMYK	0.00, 0.13, 0.10, 0.19
HSL	347°, 22%, 76%
HSV	347°, 13%, 81%
XYZ	50.9163, 49.4531, 53.3162
YIQ	188.7570, 14.1660, 7.5900

Conversions

Conversions Part 2

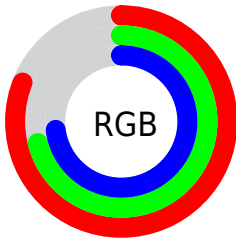
Format	Color
R _Y B	207, 180, 186
Decimal	13612218
CIE Lab	75.73, 10.68, 0.52
CIE LCh	76, 10.693, 2.790
Yxy	49.4531, 0.3313, 0.3218
Android (android.graphics.Color)	4291802298 (0xFFCFB4BA)
YUV	188.7570, -1.3592, 15.9991
Hunter-Lab	70.3229, 6.1753, 4.2746

Details

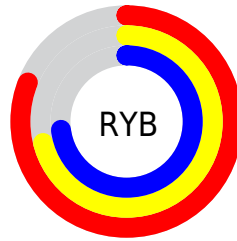
The XYZ color **50.9163, 49.4531, 53.3162** is a light color, and the websafe version is hex **CCCCCC**. A complement of this color would be **51.6797, 58.5472, 63.8381**, and the grayscale version is **48.2340, 50.7459, 55.2623**.

A 20% lighter version of the original color is **87.2625, 87.6617, 96.3256**, and **24.7719, 23.5476, 25.4298** is the 20% darker color. If you saturate the color by 10%, you get **45.4291, 41.0653, 43.5122**, and if you desaturate by 10%, it is **57.2233, 59.1706, 64.3465**.

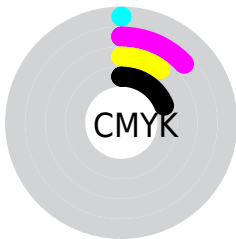
Distribution



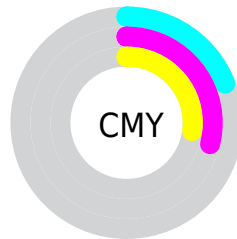
- Red (81%)
- Green (71%)
- Blue (73%)



- Red (81%)
- Yellow (71%)
- Blue (73%)



- Cyan (0%)
- Magenta (13%)
- Yellow (10%)
- Black (19%)



- Cyan (19%)
- Magenta (29%)
- Yellow (27%)

Brightness & Saturation Gradients

These gradients show how the XYZ color 50.9163, 49.4531, 53.3162 changes by changing the brightness by 10 percent. The first figure shows a shift by +10% for each color and the second figure -10%.

Similar to the brightness gradients but the following saturation gradients show a change of the XYZ color 50.9163, 49.4531, 53.3162 by changing the saturation by 10% instead.

■ 50.9163, 49.4531,
53.3162

■ 50.9163, 49.4531,
53.3162

380.6315,
384.5234, 416.5977

■ 36.3628, 34.9790,
37.6658

■ 90.7148, 89.3640,
96.5157

■ 24.8859, 23.6467,
25.4236

116.6904,
115.5697, 124.9020

■ 16.1204, 15.0718,
16.1710

147.2041,
146.4547, 158.3706

■ 9.7007, 8.8698,
9.4896

182.6213,
182.4034, 197.3400

■ 5.2617, 4.6563,
4.9607

223.3073,
223.8002, 242.2290

■ 2.4380, 2.0471,
2.1659

269.6274,

■ 0.8641, 0.6346,

271.0296, 293.4558

0.6546

321.9470,
324.4758, 351.4393

■ 0.0000, 0.0000,
0.0000

■ 50.9163, 49.4531,
53.3162

■ 50.9163, 49.4531,
53.3162

■ 45.4291, 41.0653,
43.5122

■ 57.2233, 59.1706,
64.3465

■ 40.7237, 33.9429,
34.8884

■ 64.3778, 70.2654,
76.6404

■ 36.7649, 28.0261,
27.4008

■ 72.4114, 82.7907,
90.2378

■ 33.5136, 23.2478,
21.0011

■ 78.8121, 91.7134,
104.3287

■ 30.9268, 19.5342,
15.6375

■ 79.5424, 92.0055,
108.1743

■ 28.9566, 16.8028,
11.2539

■ 27.5486, 14.9586,
7.7884

■ 26.6380, 13.8878,
5.1716

■ 26.2251, 13.4626,
3.7989

Harmonies

Analogous

The Analogous color harmony consists of three colors that are next to each other on the color wheel.



50.4772, 49.4531, 58.9957



50.9163, 49.4531, 53.3162



50.2828, 49.4531, 48.1455

Triad

The Triadic color harmony groups three colors that are evenly spaced from another and form a triangle on the color wheel.



50.9163, 49.4531, 53.3162



44.9686, 49.4531, 45.1770



45.2815, 49.4531, 64.1542

Complementary

The Complementary color scheme is a pair of colors which are on the opposite of each other on the color wheel.



50.9163, 49.4531, 53.3162



51.6797, 58.5472, 63.8381

Split Complementary

Split-complementary colors differ from the complementary color scheme. The scheme consists of three colors, the original color and two neighbors of the complement color.



43.8703, 49.4531, 59.9796



50.9163, 49.4531, 53.3162



43.6933, 49.4531, 49.0051

Square

The Square scheme is like the rectangle color scheme, but the four colors are evenly spaced on the color wheel.



50.9163, 49.4531, 53.3162



46.8183, 49.4531, 43.6579



43.2968, 49.4531, 54.3793



47.1895, 49.4531, 65.5073

Rectangle

The Rectangle color scheme consists of four colors that form a rectangle on the color wheel.



50.9163, 49.4531, 53.3162



49.3477, 49.4531, 45.6081



43.2968, 49.4531, 54.3793



44.7351, 49.4531, 63.0205

Sweetspot

The Sweet Spot groups the original color and five complimentary colors.



50.9177, 49.4553, 53.3173



90.6306, 93.1633, 101.2543



51.5922, 49.5258, 65.8722



19.2261, 19.6743, 21.3728



0.0000, 0.0000, 0.0000



20.3446, 21.4041, 23.3091

Same Dimension

The Same Dimension uses a secret algorithm to generate beautiful new colors.



50.9177, 49.4553, 53.3173



78.6919, 74.7963, 80.2873



51.7847, 52.1882, 50.5267



11.9147, 11.8506, 12.8267



16.5524, 8.4938, 2.5490



0.9561, 0.4872, 0.3039

Inverse Universe

The Inverse Universe completely reimagines the original color for something new.



50.9177, 49.4553, 53.3173



78.6919, 74.7963, 80.2873



50.6946, 55.4258, 67.0584



11.9147, 11.8506, 12.8267



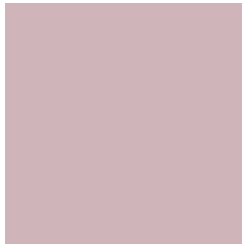
16.5524, 8.4938, 2.5490



0.9561, 0.4872, 0.3039

Previews

White Background



This preview shows how the XYZ color 50.9163, 49.4531, 53.3162 looks on a white background.

Color Contrast Check

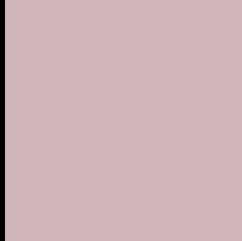
Large Text (above 18pt) WCAG AA × Fail

Any Text WCAG AA × Fail

Large Text (above 18pt) WCAG AAA × Fail

Any Text WCAG AAA × Fail

Black Background



This preview shows how the XYZ color 50.9163, 49.4531, 53.3162 looks on a black background.

Color Contrast Check

Large Text (above 18pt) WCAG AA ✓ Pass

Any Text WCAG AA ✓ Pass

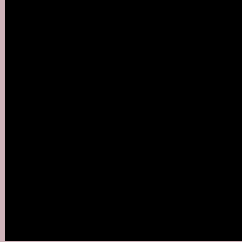
Large Text (above 18pt) WCAG AAA ✓ Pass

Any Text WCAG AAA ✓ Pass

If you want to check with other color combinations, try the [Color Contrast Checker](#).

XYZ 50.9163, 49.4531, 53.3162

Background



This preview shows how black text looks on a background with the XYZ color 50.9163, 49.4531, 53.3162.



This preview shows how white text looks on a background with the XYZ color 50.9163, 49.4531,

Color Blindness Simulation

Color vision deficiency is a very complex topic, and I could not describe the different causes any better than Wikipedia does, so if you want to learn more, you should check out their [article about color blindness](#).

Dichromacy



Original Color

50.9163, 49.4531, 53.3162

Protanopia

47.7305, 49.6108, 55.2043

Deuteranopia

50.5636, 49.5721, 53.3577



Tritanopia

51.7582, 49.5004, 57.2787

Trichromacy



Original Color

50.9163, 49.4531, 53.3162

Protanomaly

48.9825, 49.6476, 54.5782

Deuteranomaly

50.8404, 49.7147, 53.3707

Tritanomaly

51.4268, 49.3678, 55.5337

Monochromacy



Original Color

50.9163, 49.4531, 53.3162

Achromatopsia

48.3692, 50.8881, 55.4172

Achromatomaly

49.4010, 50.4844, 54.7177

CSS Examples

Text

The CSS property to change the color of the text to XYZ 50.9163, 49.4531, 53.3162 is called "color". The color property can be set on classes, ids or directly on the HTML element.

This example shows how text in the color `rgb(207, 180, 186)` looks like.

```
.text, #text, p{  
    color:rgb(207, 180, 186)  
}
```

If you want to add a text shadow in that color use the text-shadow property, you can generate a text shadow directly with our [CSS Text Shadow Generator](#).

Here you see how black text with a 4 pixel rgb(207, 180, 186) colored shadow looks like.

```
.shadow{ text-shadow: 4px 4px 2px rgb(207, 180, 186) }
```

Border

The CSS property to change the border of an element to XYZ 50.9163, 49.4531, 53.3162 is called "border". The border property can be set on classes, ids or directly on the HTML element.

This example shows the color as border, it can be applied via the CSS property "border" or "border-color".

```
.border, #border, table{ border:4px solid rgb(207, 180, 186) }
```


If only the border color should be changed use the property `border-color`.

```
.border{ border-color:rgb(207, 180, 186) }
```

If you want to add a box shadow in that color use:

Here you see how a box with a 4 pixel `rgb(207, 180, 186)` colored shadow looks like.

```
.boxshadow{ -moz-box-shadow:4px 4px 4px  
4px rgb(207, 180, 186); -webkit-box-  
shadow:4px 4px 4px 4px rgb(207, 180, 186);  
box-shadow:4px 4px 4px 4px rgb(207, 180,  
186) }
```

Background

The CSS property to change the background color of an element to XYZ 50.9163, 49.4531, 53.3162 is called "background". The background property can be set on classes, ids or directly on the HTML element.

```
.background, #background, body{  
background: rgb(207, 180, 186) }
```

If only the background color should be changed can be used:

```
.background{ background-color: rgb(207,  
180, 186) }
```

This example shows the color as background, it is applied via the CSS property "background".

To optimize and compress your CSS code, you can use our [online CSS compressor and optimizer](#) based on csstidy. If you want to create a linear or radial gradient as background or border, check our [CSS Gradient Generator](#).

Hey! You found this booklet interesting? Support Converting Colors with the new Membership Option!

The pro membership hides all ads, plus gives you double the colors in the color bucket, and more awesome pro features!

[Learn more, Memberships starting at \\$2.50/m!](#)

**Follow me
on Twitter!**

@ConvertingColor