

Converting Colors

XYZ(50.7198, 50.9505, 53.9975)

Have a look what the booklet for
XYZ(50.7198, 50.9505, 53.9975)
contains.

XYZ(50.6757, 50.8423, 54.1564)	3
<i>Conversions</i>	4
<i>Details</i>	6
<i>Harmonies</i>	12
<i>Previews</i>	24
<i>Color Blindness Simulation</i>	28
<i>CSS Examples</i>	31

Color

**XYZ(50.6757, 50.8423,
54.1564)**

Conversions

Conversions Part 1

Format	Color
Hex	CAB9BB
RGB	202, 185, 187
RGB Percent	79%, 73%, 73%
CMY	0.2078, 0.2745, 0.2667
CMYK	0.00, 0.08, 0.07, 0.21
HSL	353°, 14%, 76%
HSV	353°, 8%, 79%
XYZ	50.6757, 50.8423, 54.1564
YIQ	190.3110, 9.4900, 4.2260

Conversions

Conversions Part 2

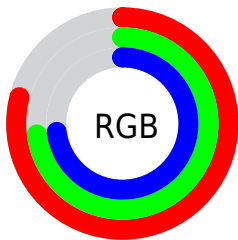
Format	Color
R _Y B	202, 185, 187
Decimal	13285819
CIE Lab	76.58, 6.37, 1.16
CIE LCh	77, 6.477, 10.354
Yxy	50.8423, 0.3255, 0.3266
Android (android.graphics.Color)	4291475899 (0xFFCAB9BB)
YUV	190.3110, -1.6323, 10.2513
Hunter-Lab	71.3038, 2.0786, 4.8809

Details

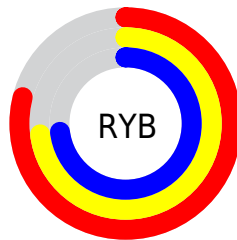
The XYZ color **50.6757, 50.8423, 54.1564** is a light color, and the websafe version is hex **CCCCCC**. A complement of this color would be **51.5553, 56.7267, 62.8783**, and the grayscale version is **49.1292, 51.6878, 56.2880**.

A 20% lighter version of the original color is **88.8730, 90.6417, 97.6055**, and **24.7671, 24.5197, 25.9817** is the 20% darker color. If you saturate the color by 10%, you get **44.9551, 42.2677, 43.4110**, and if you desaturate by 10%, it is **57.2365, 60.7169, 66.3520**.

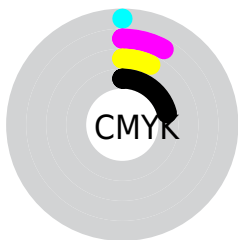
Distribution



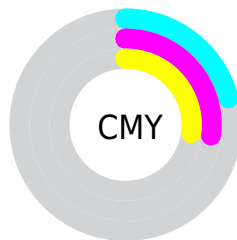
- Red (79%)
- Green (73%)
- Blue (73%)



- Red (79%)
- Yellow (73%)
- Blue (73%)



- Cyan (0%)
- Magenta (8%)
- Yellow (7%)
- Black (21%)



- Cyan (21%)
- Magenta (27%)
- Yellow (27%)

Brightness & Saturation Gradients

These gradients show how the XYZ color 50.6757, 50.8423, 54.1564 changes by changing the brightness by 10 percent. The first figure shows a shift by +10% for each color and the second figure -10%.

Similar to the brightness gradients but the following saturation gradients show a change of the XYZ color 50.6757, 50.8423, 54.1564 by changing the saturation by 10% instead.

■ 50.6757, 50.8423,
54.1564

■ 50.6757, 50.8423,
54.1564

379.7109,
389.9508, 419.8976

■ 36.1706, 36.0831,
38.3327

■ 90.3611, 91.4216,
97.7626

■ 24.7367, 24.4984,
25.9372

116.2720,
118.0106, 126.3821

■ 16.0087, 15.7037,
16.5513

146.7156,
149.3115, 160.1040

■ 9.6212, 9.3148,
9.7565

182.0573,
185.7089, 199.3468

■ 5.2088, 4.9471,
5.1343

222.6622,
227.5872, 244.5290

■ 2.4063, 2.2162,
2.2662

268.8959,

■ 0.8483, 0.7288,

275.3306, 296.0691

0.7122

321.1237,
329.3237, 354.3858

■ 0.0000, 0.0000,
0.0000

■ 50.6757, 50.8423,
54.1564

■ 50.6757, 50.8423,
54.1564

■ 44.9551, 42.2677,
43.4110

■ 57.2365, 60.7169,
66.3520

■ 40.0366, 34.9325,
34.0587

■ 64.6651, 71.9355,
80.0456

■ 35.8855, 28.7815,
26.0431

■ 72.9931, 84.5482,
95.2868

■ 32.4628, 23.7523,
19.3032

■ 78.1674, 91.2967,
108.1099

■ 29.7263, 19.7773,
13.7727

■ 27.6292, 16.7812,
9.3798

■ 26.1187, 14.6788,
6.0446

■ 25.1337, 13.3704,
3.6770

■ 24.5849, 12.7033,
2.1665

Harmonies

Analogous

The Analogous color harmony consists of three colors that are next to each other on the color wheel.



50.5739, 50.8423, 57.6551



50.6757, 50.8423, 54.1564



50.1393, 50.8423, 51.1092

Triad

The Triadic color harmony groups three colors that are evenly spaced from another and form a triangle on the color wheel.



50.6757, 50.8423, 54.1564



46.8166, 50.8423, 50.3808



47.5374, 50.8423, 61.9501

Complementary

The Complementary color scheme is a pair of colors which are on the opposite of each other on the color wheel.



50.6757, 50.8423, 54.1564



51.5553, 56.7267, 62.8783

Split Complementary

Split-complementary colors differ from the complementary color scheme. The scheme consists of three colors, the original color and two neighbors of the complement color.



46.5532, 50.8423, 59.8373



50.6757, 50.8423, 54.1564



46.1420, 50.8423, 53.1239

Square

The Square scheme is like the rectangle color scheme, but the four colors are evenly spaced on the color wheel.



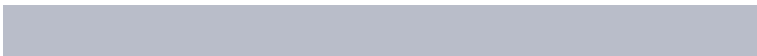
50.6757, 50.8423, 54.1564



47.9025, 50.8423, 48.9912



46.0464, 50.8423, 56.5785



48.7482, 50.8423, 62.2552

Rectangle

The Rectangle color scheme consists of four colors that form a rectangle on the color wheel.



50.6757, 50.8423, 54.1564



49.4972, 50.8423, 49.7066



46.0464, 50.8423, 56.5785



47.1696, 50.8423, 61.4237

Sweetspot

The Sweet Spot groups the original color and five complimentary colors.



50.6771, 50.8445, 54.1575



91.5898, 94.7886, 102.4781



51.7594, 51.2071, 63.0337



19.4109, 19.9981, 21.5755



0.0000, 0.0000, 0.0000



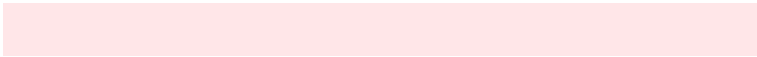
20.3446, 21.4041, 23.3091

Same Dimension

The Same Dimension uses a secret algorithm to generate beautiful new colors.



50.6771, 50.8445, 54.1575



84.0339, 83.4301, 88.3881



51.7973, 53.4246, 53.4836



11.2650, 11.2347, 11.9303



15.7951, 8.1286, 1.3739



0.8332, 0.4267, 0.1675

Inverse Universe

The Inverse Universe completely reimagines the original color for something new.



50.6771, 50.8445, 54.1575



84.0339, 83.4301, 88.3881



50.3574, 53.9549, 63.6379



11.2650, 11.2347, 11.9303



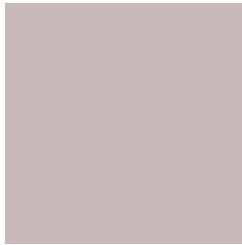
15.7951, 8.1286, 1.3739



0.8332, 0.4267, 0.1675

Previews

White Background



This preview shows how the XYZ color 50.6757, 50.8423, 54.1564 looks on a white background.

Color Contrast Check

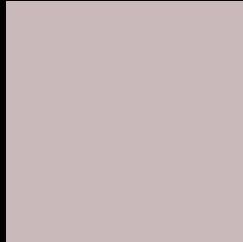
Large Text (above 18pt) WCAG AA × Fail

Any Text WCAG AA × Fail

Large Text (above 18pt) WCAG AAA × Fail

Any Text WCAG AAA × Fail

Black Background



This preview shows how the XYZ color 50.6757, 50.8423, 54.1564 looks on a black background.

Color Contrast Check

Large Text (above 18pt) WCAG AA ✓ Pass

Any Text WCAG AA ✓ Pass

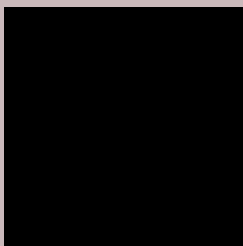
Large Text (above 18pt) WCAG AAA ✓ Pass

Any Text WCAG AAA ✓ Pass

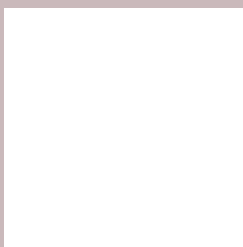
If you want to check with other color combinations, try the [Color Contrast Checker](#).

XYZ 50.6757, 50.8423, 54.1564

Background



This preview shows how black text looks on a background with the XYZ color 50.6757, 50.8423, 54.1564.



This preview shows how white text looks on a background with the XYZ color 50.6757, 50.8423,

Color Blindness Simulation

Color vision deficiency is a very complex topic, and I could not describe the different causes any better than Wikipedia does, so if you want to learn more, you should check out their [article about color blindness](#).

Dichromacy



Original Color

50.6757, 50.8423, 54.1564

Protanopia

48.9068, 50.8470, 55.3809

Deuteranopia

51.9156, 50.8647, 54.0953



Tritanopia

52.0284, 50.7816, 60.4857

Trichromacy



Original Color

50.6757, 50.8423, 54.1564

Protanomaly

49.6124, 50.9073, 54.7882

Deuteranomaly

51.5637, 50.9906, 54.1382

Tritanomaly

51.5067, 50.8725, 58.1436

Monochromacy



Original Color

50.6757, 50.8423, 54.1564

Achromatopsia

48.9429, 51.4918, 56.0745

Achromatomaly

49.4167, 51.1099, 55.4048

CSS Examples

Text

The CSS property to change the color of the text to XYZ 50.6757, 50.8423, 54.1564 is called "color". The color property can be set on classes, ids or directly on the HTML element.

This example shows how text in the color `rgb(202, 185, 187)` looks like.

```
.text, #text, p{  
    color:rgb(202, 185, 187)  
}
```

If you want to add a text shadow in that color use the text-shadow property, you can generate a text shadow directly with our [CSS Text Shadow Generator](#).

Here you see how black text with a 4 pixel rgb(202, 185, 187) colored shadow looks like.

```
.shadow{ text-shadow: 4px 4px 2px rgb(202, 185, 187) }
```

Border

The CSS property to change the border of an element to XYZ 50.6757, 50.8423, 54.1564 is called "border". The border property can be set on classes, ids or directly on the HTML element.

This example shows the color as border, it can be applied via the CSS property "border" or "border-color".

```
.border, #border, table{ border:4px solid rgb(202, 185, 187) }
```


If only the border color should be changed use the property `border-color`.

```
.border{ border-color:rgb(202, 185, 187) }
```

If you want to add a box shadow in that color use:

Here you see how a box with a 4 pixel `rgb(202, 185, 187)` colored shadow looks like.

```
.boxshadow{ -moz-box-shadow:4px 4px 4px 4px rgb(202, 185, 187); -webkit-box-shadow:4px 4px 4px 4px rgb(202, 185, 187); box-shadow:4px 4px 4px 4px rgb(202, 185, 187) }
```

Background

The CSS property to change the background color of an element to XYZ 50.6757, 50.8423, 54.1564 is called "background". The background property can be set on classes, ids or directly on the HTML element.

```
.background, #background, body{  
background: rgb(202, 185, 187) }
```

If only the background color should be changed can be used:

```
.background{ background-color: rgb(202,  
185, 187) }
```

This example shows the color as background, it is applied via the CSS property "background".

To optimize and compress your CSS code, you can use our [online CSS compressor and optimizer](#) based on csstidy. If you want to create a linear or radial gradient as background or border, check our [CSS Gradient Generator](#).

Hey! You found this booklet interesting? Support Converting Colors with the new Membership Option!

The pro membership hides all ads, plus gives you double the colors in the color bucket, and more awesome pro features!

[Learn more, Memberships starting at \\$2.50/m!](#)

**Follow me
on Twitter!**

@ConvertingColor