

Converting Colors

XYZ(50.7274, 40.6388, 37.5495)

Have a look what the booklet for
XYZ(50.7274, 40.6388, 37.5495)
contains.

XYZ(50.7114, 40.6886, 37.5286)	3
<i>Conversions</i>	4
<i>Details</i>	6
<i>Harmonies</i>	12
<i>Previews</i>	24
<i>Color Blindness Simulation</i>	28
<i>CSS Examples</i>	31

Color

**XYZ(50.7114, 40.6886,
37.5286)**

Conversions

Conversions Part 1

Format	Color
Hex	EB929E
RGB	235, 146, 158
RGB Percent	92%, 57%, 62%
CMY	0.0784, 0.4274, 0.3804
CMYK	0.00, 0.38, 0.33, 0.08
HSL	352°, 69%, 75%
HSV	352°, 38%, 92%
XYZ	50.7114, 40.6886, 37.5286
YIQ	173.9790, 49.1920, 22.6000

Conversions

Conversions Part 2

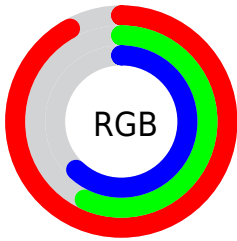
Format	Color
R _Y B	235, 146, 158
Decimal	15438494
CIE Lab	69.96, 35.03, 7.98
CIE LCh	70, 35.924, 12.827
Yxy	40.6886, 0.3933, 0.3156
Android (android.graphics.Color)	4293628574 (0xFFEB929E)
YUV	173.9790, -7.8776, 53.5154
Hunter-Lab	63.7876, 30.2799, 9.7688

Details

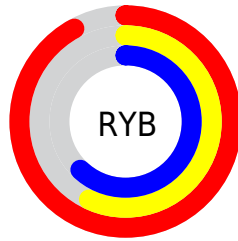
The XYZ color **50.7114, 40.6886, 37.5286** is a light color, and the websafe version is hex **FF9999**. A complement of this color would be **54.8836, 70.8563, 80.6000**, and the grayscale version is **40.2439, 42.3397, 46.1079**.

A 20% lighter version of the original color is **74.1369, 67.8374, 72.1373**, and **24.7880, 18.4141, 16.1577** is the 20% darker color. If you saturate the color by 10%, you get **45.8463, 33.5313, 27.9748**, and if you desaturate by 10%, it is **56.6128, 49.4547, 48.8572**.

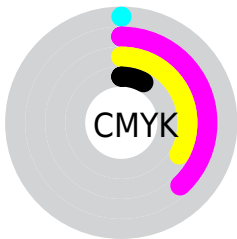
Distribution



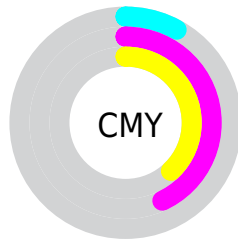
- Red (92%)
- Green (57%)
- Blue (62%)



- Red (92%)
- Yellow (57%)
- Blue (62%)



- Cyan (0%)
- Magenta (38%)
- Yellow (33%)
- Black (8%)



- Cyan (8%)
- Magenta (43%)
- Yellow (38%)

Brightness & Saturation Gradients

These gradients show how the XYZ color 50.7114, 40.6886, 37.5286 changes by changing the brightness by 10 percent. The first figure shows a shift by +10% for each color and the second figure -10%.

Similar to the brightness gradients but the following saturation gradients show a change of the XYZ color 50.7114, 40.6886, 37.5286 by changing the saturation by 10% instead.

50.7114, 40.6886,
37.5286

50.7114, 40.6886,
37.5286

379.8476,
349.0174, 350.8308

36.1991, 28.0758,
25.3180

90.4136, 76.2110,
72.5804

24.7588, 18.3828,
16.0930

116.3341, 99.8893,
96.2588

16.0252, 11.2252,
9.4349

146.7881,
128.0251, 124.5968

9.6330, 6.2185,
4.9253

182.1410,
161.0025, 158.0130

5.2167, 2.9784,
2.1455

222.7580,
199.2061, 196.9260

2.4110, 1.1205,
0.6427

269.0045,

0.8506, 0.0000,

243.0201, 241.7542

0.0000

321.2460,
292.8291, 292.9163

0.0000, 0.0000,
0.0000

50.7114, 40.6886,
37.5286

50.7114, 40.6886,
37.5286

45.8463, 33.5313,
27.9748

56.6128, 49.4547,
48.8572

41.9541, 27.8793,
20.1033

63.6025, 59.9130,
62.0421

38.9694, 23.6264,
13.8164

71.7329, 72.1482,
77.1624

36.8172, 20.6499,
9.0056

81.0520, 86.2378,
94.2922

35.4104, 18.8058,
5.5483

88.0710, 96.4022,
108.5734

■ 34.6338, 17.8983,
3.2988

■ 34.5173, 17.7647,
2.9530

Harmonies

Analogous

The Analogous color harmony consists of three colors that are next to each other on the color wheel.



50.4473, 40.6886, 54.5123



50.7114, 40.6886, 37.5286



47.5242, 40.6886, 25.8129

Triad

The Triadic color harmony groups three colors that are evenly spaced from another and form a triangle on the color wheel.



50.7114, 40.6886, 37.5286



31.5192, 40.6886, 24.6264



35.4460, 40.6886, 82.7623

Complementary

The Complementary color scheme is a pair of colors which are on the opposite of each other on the color wheel.



50.7114, 40.6886, 37.5286



54.8836, 70.8563, 80.6000

Split Complementary

Split-complementary colors differ from the complementary color scheme. The scheme consists of three colors, the original color and two neighbors of the complement color.



30.9958, 40.6886, 70.0105



50.7114, 40.6886, 37.5286



28.8905, 40.6886, 35.4552

Square

The Square scheme is like the rectangle color scheme, but the four colors are evenly spaced on the color wheel.



50.7114, 40.6886, 37.5286



36.2293, 40.6886, 19.7296



28.7091, 40.6886, 51.8471



41.2248, 40.6886, 83.7252

Rectangle

The Rectangle color scheme consists of four colors that form a rectangle on the color wheel.



50.7114, 40.6886, 37.5286



44.0414, 40.6886, 21.3782



28.7091, 40.6886, 51.8471



33.7601, 40.6886, 79.5890

Sweetspot

The Sweet Spot groups the original color and five complimentary colors.



50.7125, 40.6906, 37.5294



83.0812, 81.9251, 86.8362



55.2927, 42.0325, 83.7962



17.4929, 17.0989, 18.0482



0.0000, 0.0000, 0.0000



20.3446, 21.4041, 23.3091

Same Dimension

The Same Dimension uses a secret algorithm to generate beautiful new colors.



50.7125, 40.6906, 37.5294



56.6314, 42.4800, 36.5412



55.2024, 51.2429, 34.1781



15.1481, 15.0871, 16.0653



19.2369, 9.8974, 1.7827



1.5368, 0.7877, 0.2783

Inverse Universe

The Inverse Universe completely reimagines the original color for something new.



50.7125, 40.6906, 37.5294



56.6314, 42.4800, 36.5412



48.4084, 55.2253, 86.7055



15.1481, 15.0871, 16.0653



19.2369, 9.8974, 1.7827



1.5368, 0.7877, 0.2783

Previews

White Background



This preview shows how the XYZ color 50.7114, 40.6886, 37.5286 looks on a white background.

Color Contrast Check

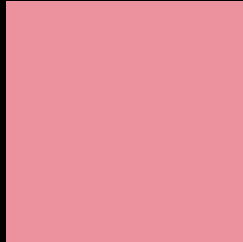
Large Text (above 18pt) WCAG AA × Fail

Any Text WCAG AA × Fail

Large Text (above 18pt) WCAG AAA × Fail

Any Text WCAG AAA × Fail

Black Background



This preview shows how the XYZ color 50.7114, 40.6886, 37.5286 looks on a black background.

Color Contrast Check

Large Text (above 18pt) WCAG AA ✓ Pass

Any Text WCAG AA ✓ Pass

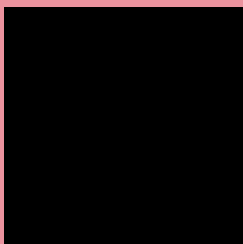
Large Text (above 18pt) WCAG AAA ✓ Pass

Any Text WCAG AAA ✓ Pass

If you want to check with other color combinations, try the [Color Contrast Checker](#).

XYZ 50.7114, 40.6886, 37.5286

Background



This preview shows how black text looks on a background with the XYZ color 50.7114, 40.6886, 37.5286.



This preview shows how white text looks on a background with the XYZ color 50.7114, 40.6886,

37.5286.

Color Blindness Simulation

Color vision deficiency is a very complex topic, and I could not describe the different causes any better than Wikipedia does, so if you want to learn more, you should check out their [article about color blindness](#).

Dichromacy



Original Color

50.7114, 40.6886, 37.5286

Protanopia

39.4649, 41.1030, 44.8834

Deuteranopia

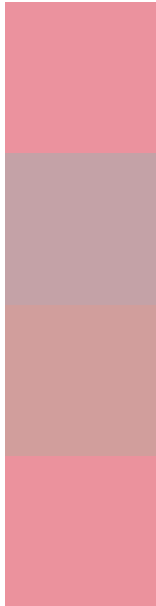
41.6197, 40.7462, 36.6815



Tritanopia

50.6256, 40.6543, 37.0771

Trichromacy



Original Color

50.7114, 40.6886, 37.5286

Protanomaly

42.6603, 40.3664, 42.1023

Deuteranomaly

44.5221, 40.4093, 36.9057

Tritanomaly

50.6256, 40.6543, 37.0771

Monochromacy



Original Color

50.7114, 40.6886, 37.5286

Achromatopsia

40.2316, 42.3268, 46.0938

Achromatomaly

43.1083, 41.1138, 42.7095

CSS Examples

Text

The CSS property to change the color of the text to XYZ 50.7114, 40.6886, 37.5286 is called "color". The color property can be set on classes, ids or directly on the HTML element.

This example shows how text in the color `rgb(235, 146, 158)` looks like.

```
.text, #text, p{  
    color:rgb(235, 146, 158)  
}
```

If you want to add a text shadow in that color use the text-shadow property, you can generate a text shadow directly with our [CSS Text Shadow Generator](#).

Here you see how black text with a 4 pixel rgb(235, 146, 158) colored shadow looks like.

```
.shadow{ text-shadow: 4px 4px 2px rgb(235, 146, 158) }
```

Border

The CSS property to change the border of an element to XYZ 50.7114, 40.6886, 37.5286 is called "border". The border property can be set on classes, ids or directly on the HTML element.

This example shows the color as border, it can be applied via the CSS property "border" or "border-color".

```
.border, #border, table{ border:4px solid rgb(235, 146, 158) }
```


If only the border color should be changed use the property `border-color`.

```
.border{ border-color:rgb(235, 146, 158) }
```

If you want to add a box shadow in that color use:

Here you see how a box with a 4 pixel `rgb(235, 146, 158)` colored shadow looks like.

```
.boxshadow{ -moz-box-shadow:4px 4px 4px  
4px rgb(235, 146, 158); -webkit-box-  
shadow:4px 4px 4px 4px rgb(235, 146, 158);  
box-shadow:4px 4px 4px 4px rgb(235, 146,  
158) }
```

Background

The CSS property to change the background color of an element to XYZ 50.7114, 40.6886, 37.5286 is called "background". The background property can be set on classes, ids or directly on the HTML element.

```
.background, #background, body{  
background: rgb(235, 146, 158) }
```

If only the background color should be changed can be used:

```
.background{ background-color: rgb(235,  
146, 158) }
```

This example shows the color as background, it is applied via the CSS property "background".

To optimize and compress your CSS code, you can use our [online CSS compressor and optimizer](#) based on csstidy. If you want to create a linear or radial gradient as background or border, check our [CSS Gradient Generator](#).

Hey! You found this booklet interesting? Support Converting Colors with the new Membership Option!

The pro membership hides all ads, plus gives you double the colors in the color bucket, and more awesome pro features!

[Learn more, Memberships starting at \\$2.50/m!](#)

**Follow me
on Twitter!**

@ConvertingColor