

# Converting Colors

XYZ(50.7601, 51.1429, 51.1284)

Have a look what the booklet for  
XYZ(50.7601, 51.1429, 51.1284)  
contains.

<b>XYZ(50.8012, 51.2914, 50.9388)</b> .....	3
<b><i>Conversions</i></b> .....	4
<b><i>Details</i></b> .....	6
<b><i>Harmonies</i></b> .....	12
<b><i>Previews</i></b> .....	24
<b><i>Color Blindness Simulation</i></b> .....	28
<b><i>CSS Examples</i></b> .....	31

# Color

**XYZ(50.8012, 51.2914,  
50.9388)**

# Conversions

## Conversions Part 1

Format	Color
Hex	CCBAB5
RGB	204, 186, 181
RGB Percent	80%, 73%, 71%
CMY	0.2000, 0.2706, 0.2902
CMYK	0.00, 0.09, 0.11, 0.20
HSL	13°, 18%, 75%
HSV	13°, 11%, 80%
XYZ	50.8012, 51.2914, 50.9388
YIQ	190.8120, 12.3330, 2.2610

# Conversions

## Conversions Part 2

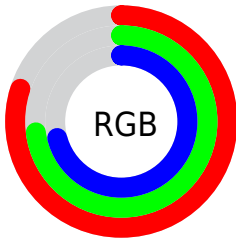
<b>Format</b>	<b>Color</b>
<b>R<sub>YB</sub></b>	204, 187, 181
Decimal	13417141
CIE Lab	76.86, 5.53, 4.84
CIE LCh	77, 7.349, 41.145
Yxy	51.2914, 0.3320, 0.3352
Android (android.graphics.Color)	4291607221 (0xFFCCBAB5)
YUV	190.8120, -4.8373, 11.5659
Hunter-Lab	71.6180, 1.2849, 7.9622

# Details

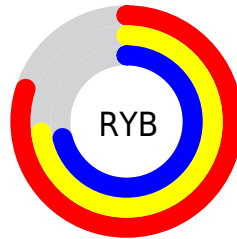
The XYZ color **50.8012, 51.2914, 50.9388** is a light color, and the websafe version is hex **CCCCCC**. A complement of this color would be **50.3783, 55.0290, 65.0936**, and the grayscale version is **49.4357, 52.0102, 56.6391**.

A 20% lighter version of the original color is **88.2782, 90.8787, 93.0093**, and **24.8615, 24.8176, 23.9020** is the 20% darker color. If you saturate the color by 10%, you get **45.6828, 44.1623, 39.6506**, and if you desaturate by 10%, it is **56.6047, 59.2990, 63.9687**.

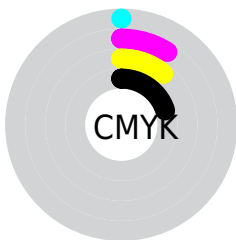
# Distribution



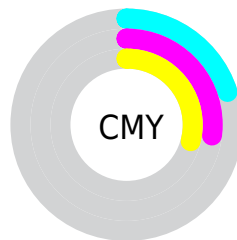
- Red (80%)
- Green (73%)
- Blue (71%)



- Red (80%)
- Yellow (73%)
- Blue (71%)



- Cyan (0%)
- Magenta (9%)
- Yellow (11%)
- Black (20%)



- Cyan (20%)
- Magenta (27%)
- Yellow (29%)

# Brightness & Saturation Gradients

These gradients show how the XYZ color 50.8012, 51.2914, 50.9388 changes by changing the brightness by 10 percent. The first figure shows a shift by +10% for each color and the second figure -10%.

Similar to the brightness gradients but the following saturation gradients show a change of the XYZ color 50.8012, 51.2914, 50.9388 by changing the saturation by 10% instead.



■ 50.8012, 51.2914,  
50.9388

■ 50.8012, 51.2914,  
50.9388

380.1913,  
391.6949, 407.1657

■ 36.2708, 36.4406,  
35.7835

■ 90.5456, 92.0854,  
92.9749

■ 24.8145, 24.7746,  
23.9787

116.4903,  
118.7973, 120.6928

■ 16.0669, 15.9092,  
15.1058

146.9705,  
150.2317, 153.4352

■ 9.6627, 9.4600,  
8.7462

182.3516,  
186.7730, 191.6209

■ 5.2364, 5.0424,  
4.4815

222.9988,  
228.8056, 235.6682

■ 2.4228, 2.2722,  
1.8930

269.2776,

■ 0.8565, 0.7589,

276.7138, 285.9958

0.4883

321.5533,  
330.8821, 343.0221

■ 0.0000, 0.0000,  
0.0000

■ 50.8012, 51.2914,  
50.9388

■ 50.8012, 51.2914,  
50.9388

■ 45.6828, 44.1623,  
39.6506

■ 56.6047, 59.2990,  
63.9687

■ 41.2195, 37.8749,  
30.0269

■ 63.1132, 68.2066,  
78.8066

■ 37.3858, 32.4000,  
21.9895

■ 70.3510, 78.0437,  
95.5193

■ 34.1523, 27.7038,  
15.4525

■ 77.0918, 88.3370,  
107.5953

■ 31.4876, 23.7505,  
10.3221

■ 78.7120, 91.5775,  
108.1354

■ 29.3571, 20.5010,  
6.4934

■ 27.7221, 17.9127,  
3.8471

■ 26.5383, 15.9380,  
2.2414

■ 25.8170, 14.6674,  
1.4704

# Harmonies

## Analogous

The Analogous color harmony consists of three colors that are next to each other on the color wheel.



51.4334, 51.2914, 54.3743



50.8012, 51.2914, 50.9388



49.6239, 51.2914, 48.8813

# Triad

The Triadic color harmony groups three colors that are evenly spaced from another and form a triangle on the color wheel.



50.8012, 51.2914, 50.9388



46.2536, 51.2914, 53.3989



49.2718, 51.2914, 63.7381

# Complementary

The Complementary color scheme is a pair of colors which are on the opposite of each other on the color wheel.



50.8012, 51.2914, 50.9388



50.3783, 55.0290, 65.0936

# Split Complementary

Split-complementary colors differ from the complementary color scheme. The scheme consists of three colors, the original color and two neighbors of the complement color.



47.8882, 51.2914, 63.4462



50.8012, 51.2914, 50.9388



46.1634, 51.2914, 57.3473

# Square

The Square scheme is like the rectangle color scheme, but the four colors are evenly spaced on the color wheel.



50.8012, 51.2914, 50.9388



47.0054, 51.2914, 50.2541



46.7566, 51.2914, 61.0621



50.5392, 51.2914, 61.8415



# Rectangle

The Rectangle color scheme consists of four colors that form a rectangle on the color wheel.



50.8012, 51.2914, 50.9388



48.6973, 51.2914, 48.5061



46.7566, 51.2914, 61.0621



48.8046, 51.2914, 63.8949

# Sweetspot

The Sweet Spot groups the original color and five complimentary colors.



50.8026, 51.2937, 50.9399



91.9627, 95.7573, 101.9152



51.7370, 50.0101, 60.9695



19.5111, 20.2583, 21.4245



0.0000, 0.0000, 0.0000



20.3446, 21.4041, 23.3091

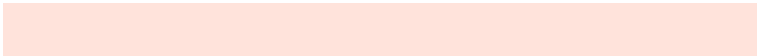


# Same Dimension

The Same Dimension uses a secret algorithm to generate beautiful new colors.



50.8026, 51.2937, 50.9399



81.5531, 81.3651, 78.6318



53.3190, 56.3265, 51.7787



11.4069, 11.6028, 11.7178



16.3062, 9.3454, 0.9444



0.8989, 0.5975, 0.0679

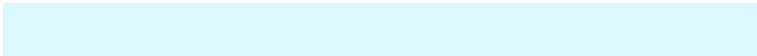


# Inverse Universe

The Inverse Universe completely reimagines the original color for something new.



50.3783, 55.0290, 65.0936



80.6859, 88.9908, 107.5321



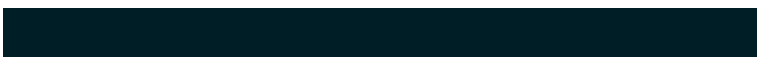
47.8359, 49.9444, 64.2461



11.3281, 12.2967, 14.3468



14.8014, 18.6268, 38.7715



0.8164, 1.0665, 2.0178



# Previews

## White Background



This preview shows how the XYZ color 50.8012, 51.2914, 50.9388 looks on a white background.

## Color Contrast Check

Large Text (above 18pt) WCAG AA × Fail

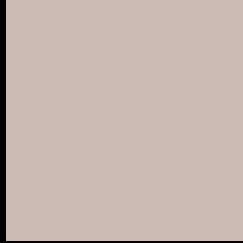
Any Text WCAG AA × Fail

Large Text (above 18pt) WCAG AAA × Fail

Any Text WCAG AAA × Fail



# Black Background



This preview shows how the XYZ color 50.8012, 51.2914, 50.9388 looks on a black background.

## Color Contrast Check

Large Text (above 18pt) WCAG AA ✓ Pass

Any Text WCAG AA ✓ Pass

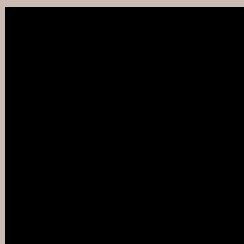
Large Text (above 18pt) WCAG AAA ✓ Pass

Any Text WCAG AAA ✓ Pass

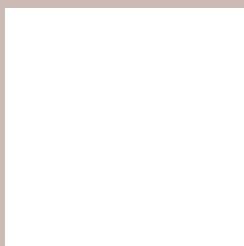
If you want to check with other color combinations, try the [Color Contrast Checker](#).

**XYZ 50.8012, 51.2914, 50.9388**

## **Background**



This preview shows how black text looks on a background with the XYZ color 50.8012, 51.2914, 50.9388.



This preview shows how white text looks on a background with the XYZ color 50.8012, 51.2914,



# Color Blindness Simulation

Color vision deficiency is a very complex topic, and I could not describe the different causes any better than Wikipedia does, so if you want to learn more, you should check out their [article about color blindness](#).

## Dichromacy



### Original Color

50.8012, 51.2914, 50.9388

### Protanopia

49.2505, 51.4162, 52.1283

### Deuteranopia

52.2410, 51.0933, 51.3646



## Tritanopia

52.5801, 51.0660, 60.5115

# Trichromacy



## Original Color

50.8012, 51.2914, 50.9388

## Protanomaly

49.7154, 51.3496, 51.5471

## Deuteranomaly

51.5964, 51.0683, 51.3937

## Tritanomaly

51.8318, 51.0659, 56.9940

# Monochromacy



## Original Color

50.8012, 51.2914, 50.9388

## Achromatopsia

49.5206, 52.0996, 56.7364

## Achromatomaly

49.9322, 51.7188, 54.3647

# CSS Examples

## Text

The CSS property to change the color of the text to XYZ 50.8012, 51.2914, 50.9388 is called "color". The color property can be set on classes, ids or directly on the HTML element.

This example shows how text in the color rgb(204, 186, 181) looks like.

```
.text, #text, p{  
    color:rgb(204, 186, 181)  
}
```

If you want to add a text shadow in that color use the text-shadow property, you can generate a text shadow directly with our [CSS Text Shadow Generator](#).

Here you see how black text with a 4 pixel rgb(204, 186, 181) colored shadow looks like.

```
.shadow{ text-shadow: 4px 4px 2px rgb(204, 186, 181) }
```

## Border

The CSS property to change the border of an element to XYZ 50.8012, 51.2914, 50.9388 is called "border". The border property can be set on classes, ids or directly on the HTML element.

This example shows the color as border, it can be applied via the CSS property "border" or "border-color".

```
.border, #border, table{ border:4px solid rgb(204, 186, 181) }
```



If only the border color should be changed use the property `border-color`.

```
.border{ border-color:rgb(204, 186, 181) }
```

If you want to add a box shadow in that color use:

Here you see how a box with a 4 pixel `rgb(204, 186, 181)` colored shadow looks like.

```
.boxshadow{ -moz-box-shadow:4px 4px 4px  
4px rgb(204, 186, 181); -webkit-box-  
shadow:4px 4px 4px 4px rgb(204, 186, 181);  
box-shadow:4px 4px 4px 4px rgb(204, 186,  
181) }
```

# Background

The CSS property to change the background color of an element to XYZ 50.8012, 51.2914, 50.9388 is called "background". The background property can be set on classes, ids or directly on the HTML element.

```
.background, #background, body{  
background: rgb(204, 186, 181) }
```

If only the background color should be changed can be used:

```
.background{ background-color: rgb(204,  
186, 181) }
```

This example shows the color as background, it is applied via the CSS property "background".

To optimize and compress your CSS code, you can use our [online CSS compressor and optimizer](#) based on csstidy. If you want to create a linear or radial gradient as background or border, check our [CSS Gradient Generator](#).

Hey! You found this booklet interesting? Support Converting Colors with the new Membership Option!

The pro membership hides all ads, plus gives you double the colors in the color bucket, and more awesome pro features!

**[Learn more, Memberships starting at \\$2.50/m!](#)**

**Follow me  
on Twitter!**

@ConvertingColor