

Converting Colors

XYZ(50.7769, 49.6827, 50.8349)

Have a look what the booklet for
XYZ(50.7769, 49.6827, 50.8349)
contains.

XYZ(50.8768, 49.7938, 50.6457)	3
<i>Conversions</i>	4
<i>Details</i>	6
<i>Harmonies</i>	12
<i>Previews</i>	24
<i>Color Blindness Simulation</i>	28
<i>CSS Examples</i>	31

Color

**XYZ(50.8768, 49.7938,
50.6457)**

Conversions

Conversions Part 1

Format	Color
Hex	D0B5B5
RGB	208, 181, 181
RGB Percent	82%, 71%, 71%
CMY	0.1843, 0.2902, 0.2902
CMYK	0.00, 0.13, 0.13, 0.18
HSL	0°, 22%, 76%
HSV	0°, 13%, 82%
XYZ	50.8768, 49.7938, 50.6457
YIQ	189.0730, 16.0920, 5.7240

Conversions

Conversions Part 2

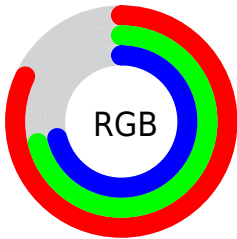
Format	Color
R _Y B	208, 181, 181
Decimal	13678005
CIE Lab	75.94, 9.67, 3.56
CIE LCh	76, 10.304, 20.213
Yxy	49.7938, 0.3362, 0.3291
Android (android.graphics.Color)	4291868085 (0xFFD0B5B5)
YUV	189.0730, -3.9800, 16.5990
Hunter-Lab	70.5647, 5.2093, 6.8417

Details

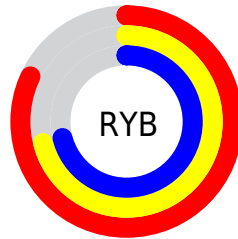
The XYZ color **50.8768, 49.7938, 50.6457** is a light color, and the websafe version is hex **CCCCCC**. A complement of this color would be **52.9969, 59.4885, 68.3643**, and the grayscale version is **48.4283, 50.9503, 55.4849**.

A 20% lighter version of the original color is **86.8102, 87.9428, 92.5200**, and **24.7523, 23.7692, 23.7054** is the 20% darker color. If you saturate the color by 10%, you get **44.9823, 41.1688, 38.9256**, and if you desaturate by 10%, it is **57.7240, 59.8132, 64.2566**.

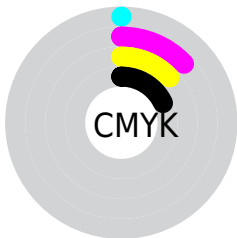
Distribution



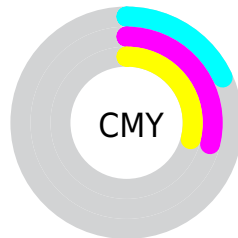
- Red (82%)
- Green (71%)
- Blue (71%)



- Red (82%)
- Yellow (71%)
- Blue (71%)



- Cyan (0%)
- Magenta (13%)
- Yellow (13%)
- Black (18%)





- Cyan (18%)
- Magenta (29%)
- Yellow (29%)

Brightness & Saturation Gradients

These gradients show how the XYZ color 50.8768, 49.7938, 50.6457 changes by changing the brightness by 10 percent. The first figure shows a shift by +10% for each color and the second figure -10%.


Similar to the brightness gradients but the following saturation gradients show a change of the XYZ color 50.8768, 49.7938, 50.6457 by changing the saturation by 10% instead.


 50.8768, 49.7938,
50.6457

 50.8768, 49.7938,
50.6457


380.4805,
385.8590, 405.9929

 36.3312, 35.2496,
35.5520

 90.6567, 89.8693,
92.5370

 24.8614, 23.8552,
23.8014

116.6217,
116.1693, 120.1716

 16.1020, 15.2262,
14.9755


147.1240,
147.1568, 152.8236

 9.6877, 8.9783,
8.6558

182.5288,
183.2161, 190.9114

 5.2530, 4.7270,
4.4236

223.2014,
224.7315, 234.8538

 2.4328, 2.0880,
1.8605

269.5074,

 0.8615, 0.6579,

272.0876, 285.0691

0.4674

321.8120,
325.6686, 341.9759

■ 0.0000, 0.0000,
0.0000

■ 50.8768, 49.7938,
50.6457

■ 50.8768, 49.7938,
50.6457

■ 44.9823, 41.1688,
38.9256

■ 57.7240, 59.8132,
64.2566

■ 39.9944, 33.8701,
29.0097

■ 65.5591, 71.2779,
79.8333

■ 35.8694, 27.8341,
20.8094

■ 74.4205, 84.2443,
97.4507

■ 32.5584, 22.9890,
14.2273

■ 79.8227, 92.1500,
108.1874

■ 30.0074, 19.2562,
9.1566

■ 28.1563, 16.5474,
5.4771

■ 26.9356, 14.7609,
3.0509

■ 26.2617, 13.7746,
1.7118

■ 26.0130, 13.4106,
1.2175

Harmonies

Analogous

The Analogous color harmony consists of three colors that are next to each other on the color wheel.



51.0592, 49.7938, 56.0340



50.8768, 49.7938, 50.6457



49.7293, 49.7938, 46.4922

Triad

The Triadic color harmony groups three colors that are evenly spaced from another and form a triangle on the color wheel.



50.8768, 49.7938, 50.6457



44.5472, 49.7938, 47.7291



46.7028, 49.7938, 65.3166

Complementary

The Complementary color scheme is a pair of colors which are on the opposite of each other on the color wheel.



50.8768, 49.7938, 50.6457



52.9969, 59.4885, 68.3643

Split Complementary

Split-complementary colors differ from the complementary color scheme. The scheme consists of three colors, the original color and two neighbors of the complement color.



45.0043, 49.7938, 62.7533



50.8768, 49.7938, 50.6457



43.7822, 49.7938, 52.4397

Square

The Square scheme is like the rectangle color scheme, but the four colors are evenly spaced on the color wheel.



50.8768, 49.7938, 50.6457



46.0635, 49.7938, 44.8889



43.9473, 49.7938, 57.9523



48.6144, 49.7938, 64.7553

Rectangle

The Rectangle color scheme consists of four colors that form a rectangle on the color wheel.



50.8768, 49.7938, 50.6457



48.5882, 49.7938, 44.8652



43.9473, 49.7938, 57.9523



46.0888, 49.7938, 64.7855

Sweetspot

The Sweet Spot groups the original color and five complimentary colors.



50.8782, 49.7960, 50.6468



90.2833, 93.0251, 99.4234



53.9221, 51.0124, 66.6795



19.1386, 19.6394, 20.9115



0.0000, 0.0000, 0.0000



20.3446, 21.4041, 23.3091

Same Dimension

The Same Dimension uses a secret algorithm to generate beautiful new colors.



50.8782, 49.7960, 50.6468



77.5018, 74.3225, 74.0132



53.7568, 55.5533, 51.6063



11.8089, 11.8085, 12.2689



16.2126, 8.3583, 0.7588



0.9066, 0.4674, 0.0424

Inverse Universe

The Inverse Universe completely reimagines the original color for something new.



52.9969, 59.4885, 68.3643



81.5982, 93.0627, 108.2700



49.8451, 53.1850, 67.3138



12.1583, 13.4068, 15.1906



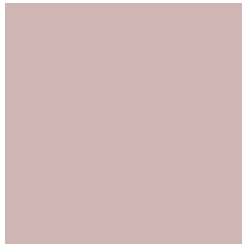
21.1498, 30.9461, 42.0510



1.1826, 1.7304, 2.3512

Previews

White Background



This preview shows how the XYZ color 50.8768, 49.7938, 50.6457 looks on a white background.

Color Contrast Check

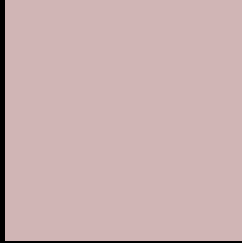
Large Text (above 18pt) WCAG AA × Fail

Any Text WCAG AA × Fail

Large Text (above 18pt) WCAG AAA × Fail

Any Text WCAG AAA × Fail

Black Background



This preview shows how the XYZ color 50.8768, 49.7938, 50.6457 looks on a black background.

Color Contrast Check

Large Text (above 18pt) WCAG AA ✓ Pass

Any Text WCAG AA ✓ Pass

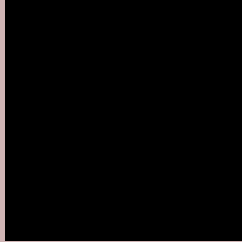
Large Text (above 18pt) WCAG AAA ✓ Pass

Any Text WCAG AAA ✓ Pass

If you want to check with other color combinations, try the [Color Contrast Checker](#).

XYZ 50.8768, 49.7938, 50.6457

Background



This preview shows how black text looks on a background with the XYZ color 50.8768, 49.7938, 50.6457.



This preview shows how white text looks on a background with the XYZ color 50.8768, 49.7938,

Color Blindness Simulation

Color vision deficiency is a very complex topic, and I could not describe the different causes any better than Wikipedia does, so if you want to learn more, you should check out their [article about color blindness](#).

Dichromacy



Original Color

50.8768, 49.7938, 50.6457

Protanopia

47.6965, 49.6549, 52.4179

Deuteranopia

50.8768, 49.7938, 50.6457



Tritanopia

52.3241, 49.7921, 57.3051

Trichromacy



Original Color

50.8768, 49.7938, 50.6457

Protanomaly

48.7137, 49.5702, 51.8003

Deuteranomaly

50.8768, 49.7938, 50.6457

Tritanomaly

51.8011, 49.8719, 55.0402

Monochromacy



Original Color

50.8768, 49.7938, 50.6457

Achromatopsia

48.3692, 50.8881, 55.4172

Achromatomaly

49.1868, 50.3987, 53.5899

CSS Examples

Text

The CSS property to change the color of the text to XYZ 50.8768, 49.7938, 50.6457 is called "color". The color property can be set on classes, ids or directly on the HTML element.

This example shows how text in the color `rgb(208, 181, 181)` looks like.

```
.text, #text, p{  
    color:rgb(208, 181, 181)  
}
```

If you want to add a text shadow in that color use the text-shadow property, you can generate a text shadow directly with our [CSS Text Shadow Generator](#).

Here you see how black text with a 4 pixel rgb(208, 181, 181) colored shadow looks like.

```
.shadow{ text-shadow: 4px 4px 2px rgb(208, 181, 181) }
```

Border

The CSS property to change the border of an element to XYZ 50.8768, 49.7938, 50.6457 is called "border". The border property can be set on classes, ids or directly on the HTML element.

This example shows the color as border, it can be applied via the CSS property "border" or "border-color".

```
.border, #border, table{ border:4px solid rgb(208, 181, 181) }
```


If only the border color should be changed use the property `border-color`.

```
.border{ border-color:rgb(208, 181, 181) }
```

If you want to add a box shadow in that color use:

Here you see how a box with a 4 pixel `rgb(208, 181, 181)` colored shadow looks like.

```
.boxshadow{ -moz-box-shadow:4px 4px 4px  
4px rgb(208, 181, 181); -webkit-box-  
shadow:4px 4px 4px 4px rgb(208, 181, 181);  
box-shadow:4px 4px 4px 4px rgb(208, 181,  
181) }
```

Background

The CSS property to change the background color of an element to XYZ 50.8768, 49.7938, 50.6457 is called "background". The background property can be set on classes, ids or directly on the HTML element.

```
.background, #background, body{  
background: rgb(208, 181, 181) }
```

If only the background color should be changed can be used:

```
.background{ background-color: rgb(208,  
181, 181) }
```

This example shows the color as background, it is applied via the CSS property "background".

To optimize and compress your CSS code, you can use our [online CSS compressor and optimizer](#) based on csstidy. If you want to create a linear or radial gradient as background or border, check our [CSS Gradient Generator](#).

Hey! You found this booklet interesting? Support Converting Colors with the new Membership Option!

The pro membership hides all ads, plus gives you double the colors in the color bucket, and more awesome pro features!

[Learn more, Memberships starting at \\$2.50/m!](#)

**Follow me
on Twitter!**

@ConvertingColor