

Converting Colors

XYZ(50.8384, 49.5272, 49.8476)

Have a look what the booklet for
XYZ(50.8384, 49.5272, 49.8476)
contains.

XYZ(50.8540, 49.4931, 50.0528)	3
<i>Conversions</i>	4
<i>Details</i>	6
<i>Harmonies</i>	12
<i>Previews</i>	24
<i>Color Blindness Simulation</i>	28
<i>CSS Examples</i>	31

Color

**XYZ(50.8540, 49.4931,
50.0528)**

Conversions

Conversions Part 1

Format	Color
Hex	D1B4B4
RGB	209, 180, 180
RGB Percent	82%, 71%, 71%
CMY	0.1804, 0.2941, 0.2941
CMYK	0.00, 0.14, 0.14, 0.18
HSL	0°, 24%, 76%
HSV	0°, 14%, 82%
XYZ	50.8540, 49.4931, 50.0528
YIQ	188.6710, 17.2840, 6.1480

Conversions

Conversions Part 2

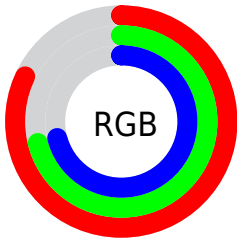
Format	Color
R _Y B	209, 180, 180
Decimal	13743284
CIE Lab	75.76, 10.41, 3.85
CIE LCh	76, 11.096, 20.287
Yxy	49.4931, 0.3381, 0.3291
Android (android.graphics.Color)	4291933364 (0xFFD1B4B4)
YUV	188.6710, -4.2748, 17.8285
Hunter-Lab	70.3513, 5.9153, 7.0629

Details

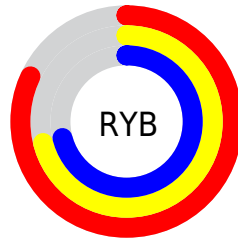
The XYZ color **50.8540, 49.4931, 50.0528** is a light color, and the websafe version is hex **CC9999**. A complement of this color would be **53.1312, 59.9065, 69.0850**, and the grayscale version is **48.1997, 50.7099, 55.2230**.

A 20% lighter version of the original color is **86.3758, 87.3070, 91.6563**, and **24.7466, 23.5811, 23.3260** is the 20% darker color. If you saturate the color by 10%, you get **44.9782, 40.8955, 38.3699**, and if you desaturate by 10%, it is **57.6897, 59.4956, 63.6407**.

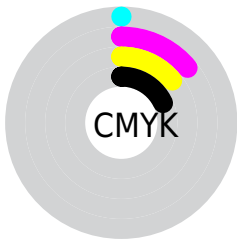
Distribution



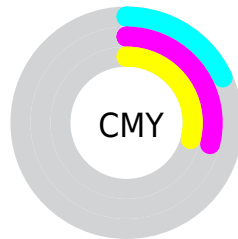
- Red (82%)
- Green (71%)
- Blue (71%)



- Red (82%)
- Yellow (71%)
- Blue (71%)



- Cyan (0%)
- Magenta (14%)
- Yellow (14%)
- Black (18%)



- Cyan (18%)
- Magenta (29%)
- Yellow (29%)

Brightness & Saturation Gradients

These gradients show how the XYZ color 50.8540, 49.4931, 50.0528 changes by changing the brightness by 10 percent. The first figure shows a shift by +10% for each color and the second figure -10%.

Similar to the brightness gradients but the following saturation gradients show a change of the XYZ color 50.8540, 49.4931, 50.0528 by changing the saturation by 10% instead.

■ 50.8540, 49.4931,
50.0528

■ 50.8540, 49.4931,
50.0528

380.3933,
384.6803, 403.6134

■ 36.3130, 35.0108,
35.0839

■ 90.6232, 89.4234,
91.6502

■ 24.8473, 23.6712,
23.4434

116.5821,
115.6401, 119.1158

■ 16.0914, 15.0899,
14.7129

147.0777,
146.5372, 151.5840

■ 9.6801, 8.8825,
8.4738

182.4753,
182.4989, 189.4734

■ 5.2480, 4.6646,
4.3075

223.1403,
223.9097, 233.2024

■ 2.4298, 2.0519,
1.7955

269.4381,

■ 0.8600, 0.6373,

271.1539, 283.1898

0.4250

321.7340,
324.6160, 339.8539

■ 0.0000, 0.0000,
0.0000

■ 50.8540, 49.4931,
50.0528

■ 50.8540, 49.4931,
50.0528

■ 44.9782, 40.8955,
38.3699

■ 57.6897, 59.4956,
63.6407

■ 40.0155, 33.6336,
28.5040

■ 65.5211, 70.9550,
79.2101

■ 35.9212, 27.6425,
20.3648

■ 74.3874, 83.9285,
96.8371

■ 32.6455, 22.8491,
13.8531

■ 80.1048, 92.2955,
108.2006

■ 30.1333, 19.1731,
8.8594

■ 28.3231, 16.5239,
5.2611

■ 27.1433, 14.7975,
2.9164

■ 26.5078, 13.8674,
1.6536

■ 26.2951, 13.5560,
1.2307

Harmonies

Analogous

The Analogous color harmony consists of three colors that are next to each other on the color wheel.



51.0532, 49.4931, 55.8253



50.8540, 49.4931, 50.0528



49.6171, 49.4931, 45.6290

Triad

The Triadic color harmony groups three colors that are evenly spaced from another and form a triangle on the color wheel.



50.8540, 49.4931, 50.0528



44.0612, 49.4931, 46.9643



46.3769, 49.4931, 65.8567

Complementary

The Complementary color scheme is a pair of colors which are on the opposite of each other on the color wheel.



50.8540, 49.4931, 50.0528



53.1312, 59.9065, 69.0850

Split Complementary

Split-complementary colors differ from the complementary color scheme. The scheme consists of three colors, the original color and two neighbors of the complement color.



44.5570, 49.4931, 63.0914



50.8540, 49.4931, 50.0528



43.2461, 49.4931, 51.9991

Square

The Square scheme is like the rectangle color scheme, but the four colors are evenly spaced on the color wheel.



50.8540, 49.4931, 50.0528



45.6822, 49.4931, 43.9381



43.4249, 49.4931, 57.9176



48.4279, 49.4931, 65.2404

Rectangle

The Rectangle color scheme consists of four colors that form a rectangle on the color wheel.



50.8540, 49.4931, 50.0528



48.3899, 49.4931, 43.9042



43.4249, 49.4931, 57.9176



45.7188, 49.4931, 65.2846

Sweetspot

The Sweet Spot groups the original color and five complimentary colors.



50.8554, 49.4953, 50.0538



90.2832, 93.0250, 99.4234



54.1250, 50.8020, 67.2753



19.1386, 19.6394, 20.9114



0.0000, 0.0000, 0.0000



20.3446, 21.4041, 23.3091

Same Dimension

The Same Dimension uses a secret algorithm to generate beautiful new colors.



50.8554, 49.4953, 50.0538



76.5370, 72.9108, 72.0954



53.9366, 55.6578, 51.0809



11.8089, 11.8085, 12.2689



16.2126, 8.3583, 0.7588



0.9066, 0.4674, 0.0424

Inverse Universe

The Inverse Universe completely reimagines the original color for something new.



53.1312, 59.9065, 69.0850



80.8588, 92.6815, 108.2353



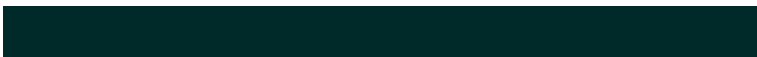
49.7349, 53.1139, 67.9529



12.1583, 13.4068, 15.1906



21.1499, 30.9464, 42.0510



1.1826, 1.7304, 2.3512

Previews

White Background



This preview shows how the XYZ color 50.8540, 49.4931, 50.0528 looks on a white background.

Color Contrast Check

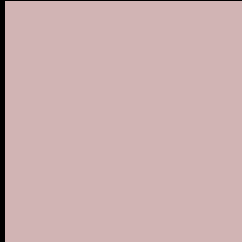
Large Text (above 18pt) WCAG AA × Fail

Any Text WCAG AA × Fail

Large Text (above 18pt) WCAG AAA × Fail

Any Text WCAG AAA × Fail

Black Background



This preview shows how the XYZ color 50.8540, 49.4931, 50.0528 looks on a black background.

Color Contrast Check

Large Text (above 18pt) WCAG AA ✓ Pass

Any Text WCAG AA ✓ Pass

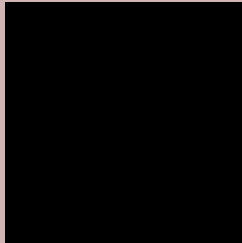
Large Text (above 18pt) WCAG AAA ✓ Pass

Any Text WCAG AAA ✓ Pass

If you want to check with other color combinations, try the [Color Contrast Checker](#).

XYZ 50.8540, 49.4931, 50.0528

Background



This preview shows how black text looks on a background with the XYZ color 50.8540, 49.4931, 50.0528.



This preview shows how white text looks on a background with the XYZ color 50.8540, 49.4931,

Color Blindness Simulation

Color vision deficiency is a very complex topic, and I could not describe the different causes any better than Wikipedia does, so if you want to learn more, you should check out their [article about color blindness](#).

Dichromacy



Original Color

50.8540, 49.4931, 50.0528

Protanopia

47.5920, 49.6131, 51.8677

Deuteranopia

50.4942, 49.6084, 50.0941



Tritanopia

52.2988, 49.4954, 56.6663

Trichromacy



Original Color

50.8540, 49.4931, 50.0528

Protanomaly

48.8727, 49.6641, 51.2662

Deuteranomaly

50.7745, 49.7529, 50.1072

Tritanomaly

51.7755, 49.5727, 54.4166

Monochromacy



Original Color

50.8540, 49.4931, 50.0528

Achromatopsia

48.3692, 50.8881, 55.4172

Achromatomaly

49.1868, 50.3987, 53.5899

CSS Examples

Text

The CSS property to change the color of the text to XYZ 50.8540, 49.4931, 50.0528 is called "color". The color property can be set on classes, ids or directly on the HTML element.

This example shows how text in the color `rgb(209, 180, 180)` looks like.

```
.text, #text, p{  
    color:rgb(209, 180, 180)  
}
```

If you want to add a text shadow in that color use the text-shadow property, you can generate a text shadow directly with our [CSS Text Shadow Generator](#).

Here you see how black text with a 4 pixel rgb(209, 180, 180) colored shadow looks like.

```
.shadow{ text-shadow: 4px 4px 2px rgb(209, 180, 180) }
```

Border

The CSS property to change the border of an element to XYZ 50.8540, 49.4931, 50.0528 is called "border". The border property can be set on classes, ids or directly on the HTML element.

This example shows the color as border, it can be applied via the CSS property "border" or "border-color".

```
.border, #border, table{ border:4px solid rgb(209, 180, 180) }
```


If only the border color should be changed use the property `border-color`.

```
.border{ border-color:rgb(209, 180, 180) }
```

If you want to add a box shadow in that color use:

Here you see how a box with a 4 pixel `rgb(209, 180, 180)` colored shadow looks like.

```
.boxshadow{ -moz-box-shadow:4px 4px 4px  
4px rgb(209, 180, 180); -webkit-box-  
shadow:4px 4px 4px 4px rgb(209, 180, 180);  
box-shadow:4px 4px 4px 4px rgb(209, 180,  
180) }
```

Background

The CSS property to change the background color of an element to XYZ 50.8540, 49.4931, 50.0528 is called "background". The background property can be set on classes, ids or directly on the HTML element.

```
.background, #background, body{  
background: rgb(209, 180, 180) }
```

If only the background color should be changed can be used:

```
.background{ background-color: rgb(209,  
180, 180) }
```

This example shows the color as background, it is applied via the CSS property "background".

To optimize and compress your CSS code, you can use our [online CSS compressor and optimizer](#) based on csstidy. If you want to create a linear or radial gradient as background or border, check our [CSS Gradient Generator](#).

Hey! You found this booklet interesting? Support Converting Colors with the new Membership Option!

The pro membership hides all ads, plus gives you double the colors in the color bucket, and more awesome pro features!

[Learn more, Memberships starting at \\$2.50/m!](#)

**Follow me
on Twitter!**

@ConvertingColor