

# Converting Colors

XYZ(50.8404, 49.7147, 53.3707)

Have a look what the booklet for  
XYZ(50.8404, 49.7147, 53.3707)  
contains.

<b>XYZ(50.8404, 49.7147, 53.3707)</b> .....	3
<b><i>Conversions</i></b> .....	4
<b><i>Details</i></b> .....	6
<b><i>Harmonies</i></b> .....	12
<b><i>Previews</i></b> .....	24
<b><i>Color Blindness Simulation</i></b> .....	28
<b><i>CSS Examples</i></b> .....	31

# Color

**XYZ(50.8404, 49.7147,  
53.3707)**

# Conversions

## Conversions Part 1

Format	Color
Hex	CEB5BA
RGB	206, 181, 186
RGB Percent	81%, 71%, 73%
CMY	0.1922, 0.2902, 0.2706
CMYK	0.00, 0.12, 0.10, 0.19
HSL	348°, 20%, 76%
HSV	348°, 12%, 81%
XYZ	50.8404, 49.7147, 53.3707
YIQ	189.0450, 13.2950, 6.8550

# Conversions

## Conversions Part 2

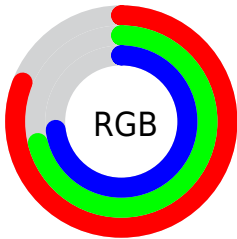
<b>Format</b>	<b>Color</b>
R <sub>Y</sub> B	206, 181, 186
Decimal	13546938
CIE Lab	75.89, 9.78, 0.75
CIE LCh	76, 9.810, 4.356
Yxy	49.7147, 0.3303, 0.3230
Android (android.graphics.Color)	4291737018 (0xFFCEB5BA)
YUV	189.0450, -1.5012, 14.8695
Hunter-Lab	70.5087, 5.3176, 4.4772

# Details

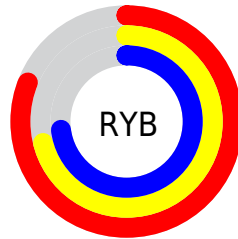
The XYZ color **50.8404, 49.7147, 53.3707** is a light color, and the websafe version is hex **CCCCCC**. A complement of this color would be **51.6719, 58.1847, 63.7685**, and the grayscale version is **48.3997, 50.9202, 55.4521**.

A 20% lighter version of the original color is **87.5512, 88.2392, 96.4218**, and **24.9017, 23.8072, 25.4731** is the 20% darker color. If you saturate the color by 10%, you get **45.3052, 41.2882, 43.3736**, and if you desaturate by 10%, it is **57.1999, 59.4651, 64.6410**.

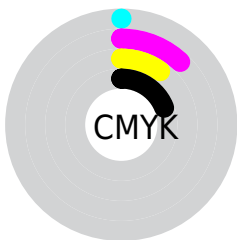
# Distribution



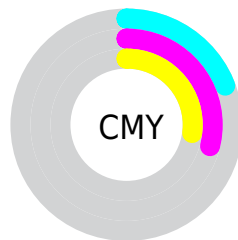
- Red (81%)
- Green (71%)
- Blue (73%)



- Red (81%)
- Yellow (71%)
- Blue (73%)



- Cyan (0%)
- Magenta (12%)
- Yellow (10%)
- Black (19%)



- Cyan (19%)
- Magenta (29%)
- Yellow (27%)

# Brightness & Saturation Gradients

These gradients show how the XYZ color 50.8404, 49.7147, 53.3707 changes by changing the brightness by 10 percent. The first figure shows a shift by +10% for each color and the second figure -10%.

Similar to the brightness gradients but the following saturation gradients show a change of the XYZ color 50.8404, 49.7147, 53.3707 by changing the saturation by 10% instead.



■ 50.8404, 49.7147,  
53.3707

■ 50.8404, 49.7147,  
53.3707

380.3413,  
385.5492, 416.8123

■ 36.3021, 35.1868,  
37.7090

■ 90.6032, 89.7520,  
96.5967

■ 24.8388, 23.8068,  
25.4569

116.5585,  
116.0302, 124.9981

■ 16.0851, 15.1903,  
16.1956

147.0501,  
146.9939, 158.4832

■ 9.6756, 8.9531,  
9.5069

182.4434,  
183.0275, 197.4704

■ 5.2450, 4.7106,  
4.9719

223.1039,  
224.5155, 242.3784

■ 2.4280, 2.0785,  
2.1723

269.3968,

■ 0.8591, 0.6525,

271.8421, 293.6257

0.6583

321.6874,  
325.3919, 351.6308

■ 0.0000, 0.0000,  
0.0000

■ 50.8404, 49.7147,  
53.3707

■ 50.8404, 49.7147,  
53.3707

■ 45.3052, 41.2882,  
43.3736

■ 57.1999, 59.4651,  
64.6410

■ 40.5562, 34.1222,  
34.6015

■ 64.4114, 70.5862,  
77.2241

■ 36.5585, 28.1577,  
27.0077

■ 72.5065, 83.1307,  
91.1617

■ 33.2729, 23.3287,  
20.5414

■ 78.7736, 91.6658,  
105.5795

■ 30.6565, 19.5625,  
15.1478

■ 79.2639, 91.8620,  
108.1612

■ 28.6617, 16.7782,  
10.7676

■ 27.2347, 14.8831,  
7.3356

■ 26.3114, 13.7663,  
4.7780

■ 25.8572, 13.2833,  
3.3152

# Harmonies

## Analogous

The Analogous color harmony consists of three colors that are next to each other on the color wheel.



50.4887, 49.7147, 58.6002



50.8404, 49.7147, 53.3707



50.2105, 49.7147, 48.6523

# Triad

The Triadic color harmony groups three colors that are evenly spaced from another and form a triangle on the color wheel.



50.8404, 49.7147, 53.3707



45.2985, 49.7147, 46.2468



45.7491, 49.7147, 63.7112

# Complementary

The Complementary color scheme is a pair of colors which are on the opposite of each other on the color wheel.



50.8404, 49.7147, 53.3707



51.6719, 58.1847, 63.7685

# Split Complementary

Split-complementary colors differ from the complementary color scheme. The scheme consists of three colors, the original color and two neighbors of the complement color.



44.4127, 49.7147, 60.0060



50.8404, 49.7147, 53.3707



44.1573, 49.7147, 49.8947

# Square

The Square scheme is like the rectangle color scheme, but the four colors are evenly spaced on the color wheel.



50.8404, 49.7147, 53.3707



46.9862, 49.7147, 44.7108



43.8372, 49.7147, 54.8982



47.5195, 49.7147, 64.7889



# Rectangle

The Rectangle color scheme consists of four colors that form a rectangle on the color wheel.



50.8404, 49.7147, 53.3707



49.3281, 49.7147, 46.3636



43.8372, 49.7147, 54.8982



45.2357, 49.7147, 62.7205

# Sweetspot

The Sweet Spot groups the original color and five complimentary colors.



50.8418, 49.7169, 53.3718



90.5956, 93.1493, 101.0701



51.7534, 49.9238, 65.3017



19.2173, 19.6707, 21.3263



0.0000, 0.0000, 0.0000



20.3446, 21.4041, 23.3091



# Same Dimension

The Same Dimension uses a secret algorithm to generate beautiful new colors.



50.8418, 49.7169, 53.3718



79.4968, 76.1602, 81.3132



51.8859, 52.6404, 51.1446



11.3025, 11.2497, 12.1275



15.9499, 8.1905, 2.1888



0.8505, 0.4336, 0.2584



# Inverse Universe

The Inverse Universe completely reimagines the original color for something new.



50.8418, 49.7169, 53.3718



79.4968, 76.1602, 81.3132



50.5070, 54.8987, 66.3277



11.3025, 11.2497, 12.1275



15.9499, 8.1905, 2.1888

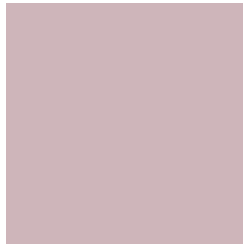


0.8505, 0.4336, 0.2584



# Previews

## White Background



This preview shows how the XYZ color 50.8404, 49.7147, 53.3707 looks on a white background.

## Color Contrast Check

Large Text (above 18pt) WCAG AA × Fail

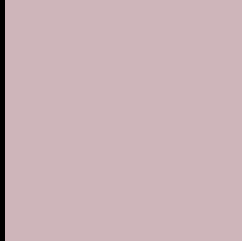
Any Text WCAG AA × Fail

Large Text (above 18pt) WCAG AAA × Fail

Any Text WCAG AAA × Fail



# Black Background



This preview shows how the XYZ color 50.8404, 49.7147, 53.3707 looks on a black background.

## Color Contrast Check

Large Text (above 18pt) WCAG AA ✓ Pass

Any Text WCAG AA ✓ Pass

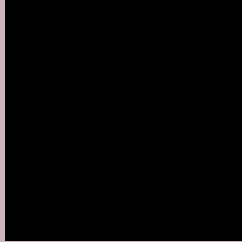
Large Text (above 18pt) WCAG AAA ✓ Pass

Any Text WCAG AAA ✓ Pass

If you want to check with other color combinations, try the [Color Contrast Checker](#).

**XYZ 50.8404, 49.7147, 53.3707**

## **Background**



This preview shows how black text looks on a background with the XYZ color 50.8404, 49.7147, 53.3707.



This preview shows how white text looks on a background with the XYZ color 50.8404, 49.7147,



# Color Blindness Simulation

Color vision deficiency is a very complex topic, and I could not describe the different causes any better than Wikipedia does, so if you want to learn more, you should check out their [article about color blindness](#).

## Dichromacy



### Original Color

50.8404, 49.7147, 53.3707

### Protanopia

47.9794, 49.7391, 55.2159

### Deuteranopia

50.8404, 49.7147, 53.3707



## Tritanopia

51.7910, 49.8030, 57.9222

# Trichromacy



## Original Color

50.8404, 49.7147, 53.3707

## Protanomaly

48.9825, 49.6476, 54.5782

## Deuteranomaly

50.8404, 49.7147, 53.3707

## Tritanomaly

51.4574, 49.6695, 56.1653

# Monochromacy



## Original Color

50.8404, 49.7147, 53.3707

## Achromatopsia

48.3692, 50.8881, 55.4172

## Achromatomaly

49.1417, 50.3508, 54.7056

# CSS Examples

## Text

The CSS property to change the color of the text to XYZ 50.8404, 49.7147, 53.3707 is called "color". The color property can be set on classes, ids or directly on the HTML element.

This example shows how text in the color `rgb(206, 181, 186)` looks like.

```
.text, #text, p{  
    color:rgb(206, 181, 186)  
}
```

If you want to add a text shadow in that color use the text-shadow property, you can generate a text shadow directly with our [CSS Text Shadow Generator](#).

Here you see how black text with a 4 pixel rgb(206, 181, 186) colored shadow looks like.

```
.shadow{ text-shadow: 4px 4px 2px rgb(206, 181, 186) }
```

## Border

The CSS property to change the border of an element to XYZ 50.8404, 49.7147, 53.3707 is called "border". The border property can be set on classes, ids or directly on the HTML element.

This example shows the color as border, it can be applied via the CSS property "border" or "border-color".

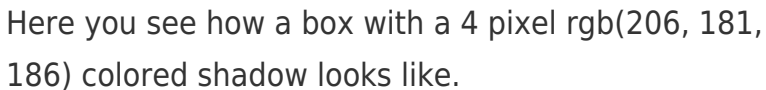
```
.border, #border, table{ border:4px solid rgb(206, 181, 186) }
```



If only the border color should be changed use the property `border-color`.

```
.border{ border-color:rgb(206, 181, 186) }
```

If you want to add a box shadow in that color use:



Here you see how a box with a 4 pixel `rgb(206, 181, 186)` colored shadow looks like.

```
.boxshadow{ -moz-box-shadow:4px 4px 4px 4px rgb(206, 181, 186); -webkit-box-shadow:4px 4px 4px 4px rgb(206, 181, 186); box-shadow:4px 4px 4px 4px rgb(206, 181, 186) }
```

# Background

The CSS property to change the background color of an element to XYZ 50.8404, 49.7147, 53.3707 is called "background". The background property can be set on classes, ids or directly on the HTML element.

```
.background, #background, body{  
background: rgb(206, 181, 186) }
```

If only the background color should be changed can be used:

```
.background{ background-color: rgb(206,  
181, 186) }
```

This example shows the color as background, it is applied via the CSS property "background".

To optimize and compress your CSS code, you can use our [online CSS compressor and optimizer](#) based on csstidy. If you want to create a linear or radial gradient as background or border, check our [CSS Gradient Generator](#).

Hey! You found this booklet interesting? Support Converting Colors with the new Membership Option!

The pro membership hides all ads, plus gives you double the colors in the color bucket, and more awesome pro features!

**[Learn more, Memberships starting at \\$2.50/m!](#)**

**Follow me  
on Twitter!**

@ConvertingColor