

Converting Colors

XYZ(50.8421, 38.0490, 34.6361)

Have a look what the booklet for
XYZ(50.8421, 38.0490, 34.6361)
contains.

XYZ(50.7552, 37.9522, 34.7874)	3
<i>Conversions</i>	4
<i>Details</i>	6
<i>Harmonies</i>	12
<i>Previews</i>	24
<i>Color Blindness Simulation</i>	28
<i>CSS Examples</i>	31

Color

**XYZ(50.7552, 37.9522,
34.7874)**

Conversions

Conversions Part 1

Format	Color
Hex	F28599
RGB	242, 133, 153
RGB Percent	95%, 52%, 60%
CMY	0.0510, 0.4784, 0.4000
CMYK	0.00, 0.45, 0.37, 0.05
HSL	349°, 81%, 74%
HSV	349°, 45%, 95%
XYZ	50.7552, 37.9522, 34.7874
YIQ	167.8710, 58.5440, 29.3280

Conversions

Conversions Part 2

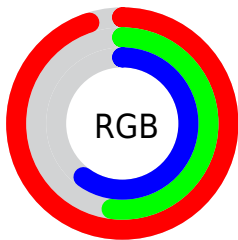
Format	Color
R_{YB}	242, 133, 153
Decimal	15893913
CIE _{Lab}	67.99, 43.64, 8.08
CIE _{LCh}	68, 44.384, 10.484
Yxy	37.9522, 0.4110, 0.3073
Android (android.graphics.Color)	4294083993 (0xFFFF28599)
YUV	167.8710, -7.3314, 65.0111
Hunter-Lab	61.6054, 39.2526, 9.6438

Details

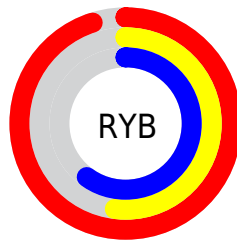
The XYZ color **50.7552, 37.9522, 34.7874** is a light color, and the websafe version is hex **FF9999**. A complement of this color would be **54.6116, 73.7655, 80.4712**, and the grayscale version is **37.1719, 39.1078, 42.5884**.

A 20% lighter version of the original color is **70.4857, 61.7314, 67.2318**, and **24.7954, 16.7639, 14.4993** is the 20% darker color. If you saturate the color by 10%, you get **46.3162, 31.4734, 25.9113**, and if you desaturate by 10%, it is **56.2297, 46.0691, 45.3429**.

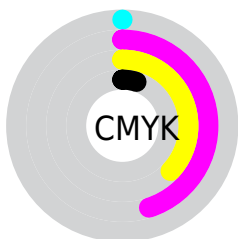
Distribution



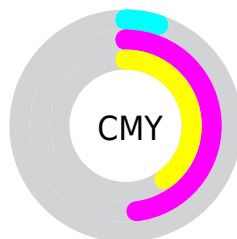
- Red (95%)
- Green (52%)
- Blue (60%)



- Red (95%)
- Yellow (52%)
- Blue (60%)



- Cyan (0%)
- Magenta (45%)
- Yellow (37%)
- Black (5%)



- Cyan (5%)
- Magenta (48%)
- Yellow (40%)

Brightness & Saturation Gradients

These gradients show how the XYZ color 50.7552, 37.9522, 34.7874 changes by changing the brightness by 10 percent. The first figure shows a shift by +10% for each color and the second figure -10%.

Similar to the brightness gradients but the following saturation gradients show a change of the XYZ color 50.7552, 37.9522, 34.7874 by changing the saturation by 10% instead.

50.7552, 37.9522,
34.7874

50.7552, 37.9522,
34.7874

380.0153,
337.4149, 338.5046

36.2341, 25.9456,
23.2169

90.4780, 72.0349,
68.3041

24.7860, 16.7829,
14.5470

116.4103, 94.8797,
91.0874

16.0456, 10.0799,
8.3590

146.8771,
122.1061, 118.4454

9.6474, 5.4519,
4.2344

182.2437,
154.0984, 150.7966

5.2263, 2.5148,
1.7548

222.8755,
191.2411, 188.5596

2.4168, 0.8840,
0.3979

269.1377,

0.8535, 0.0000,

233.9184, 232.1529

0.0000

321.3959,
282.5149, 281.9951

0.0000, 0.0000,
0.0000

50.7552, 37.9522,
34.7874

50.7552, 37.9522,
34.7874

46.3162, 31.4734,
25.9113

56.2297, 46.0691,
45.3429

42.8433, 26.5156,
18.6247

62.7970, 55.9196,
57.6569

40.2629, 22.9549,
12.8323

70.5141, 67.5985,
71.8060

38.4897, 20.6454,
8.4275

79.4327, 81.1921,
87.8615

37.4200, 19.4085,
5.2884

89.6015, 96.7810,
105.8910

■ 37.0799, 19.0620,
4.1468

■ 90.4279, 97.6172,
108.6837

Harmonies

Analogous

The Analogous color harmony consists of three colors that are next to each other on the color wheel.



50.0792, 37.9522, 55.3618



50.7552, 37.9522, 34.7874



47.1343, 37.9522, 21.2368

Triad

The Triadic color harmony groups three colors that are evenly spaced from another and form a triangle on the color wheel.



50.7552, 37.9522, 34.7874



28.1257, 37.9522, 18.6363



31.8191, 37.9522, 88.4836

Complementary

The Complementary color scheme is a pair of colors which are on the opposite of each other on the color wheel.



50.7552, 37.9522, 34.7874



54.6116, 73.7655, 80.4712

Split Complementary

Split-complementary colors differ from the complementary color scheme. The scheme consists of three colors, the original color and two neighbors of the complement color.



26.8927, 37.9522, 71.2292



50.7552, 37.9522, 34.7874



24.9561, 37.9522, 29.8848

Square

The Square scheme is like the rectangle color scheme, but the four colors are evenly spaced on the color wheel.



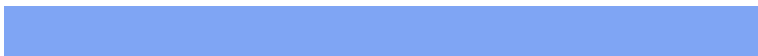
50.7552, 37.9522, 34.7874



33.7115, 37.9522, 14.0891



24.5355, 37.9522, 48.6309



38.5411, 37.9522, 91.0813

Rectangle

The Rectangle color scheme consists of four colors that form a rectangle on the color wheel.



50.7552, 37.9522, 34.7874



43.0119, 37.9522, 16.2920



24.5355, 37.9522, 48.6309



29.9226, 37.9522, 83.9957

Sweetspot

The Sweet Spot groups the original color and five complimentary colors.



50.7562, 37.9541, 34.7881



80.3566, 77.5624, 82.5787



53.9916, 38.4348, 88.5773



16.7667, 15.9440, 16.8889



0.0000, 0.0000, 0.0000



20.3446, 21.4041, 23.3091

Same Dimension

The Same Dimension uses a secret algorithm to generate beautiful new colors.



50.7562, 37.9541, 34.7881



52.5610, 36.0225, 29.9950



54.4346, 47.7361, 28.5378



15.8912, 15.8062, 16.9833



19.9556, 10.2547, 2.4169



1.6929, 0.8662, 0.3735

Inverse Universe

The Inverse Universe completely reimagines the original color for something new.



50.7562, 37.9541, 34.7881



52.5610, 36.0225, 29.9950



48.5756, 57.1471, 92.4746



15.8912, 15.8062, 16.9833



19.9556, 10.2547, 2.4169



1.6929, 0.8662, 0.3735

Previews

White Background



This preview shows how the XYZ color 50.7552, 37.9522, 34.7874 looks on a white background.

Color Contrast Check

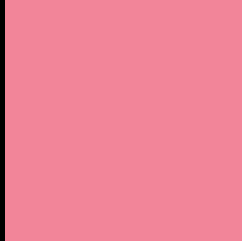
Large Text (above 18pt) WCAG AA × Fail

Any Text WCAG AA × Fail

Large Text (above 18pt) WCAG AAA × Fail

Any Text WCAG AAA × Fail

Black Background



This preview shows how the XYZ color 50.7552, 37.9522, 34.7874 looks on a black background.

Color Contrast Check

Large Text (above 18pt) WCAG AA ✓ Pass

Any Text WCAG AA ✓ Pass

Large Text (above 18pt) WCAG AAA ✓ Pass

Any Text WCAG AAA ✓ Pass

If you want to check with other color combinations, try the [Color Contrast Checker](#).

XYZ 50.7552, 37.9522, 34.7874

Background



This preview shows how black text looks on a background with the XYZ color 50.7552, 37.9522, 34.7874.



This preview shows how white text looks on a background with the XYZ color 50.7552, 37.9522,

34.7874.

Color Blindness Simulation

Color vision deficiency is a very complex topic, and I could not describe the different causes any better than Wikipedia does, so if you want to learn more, you should check out their [article about color blindness](#).

Dichromacy



Original Color

50.7552, 37.9522, 34.7874

Protanopia

36.9543, 38.1754, 43.9490

Deuteranopia

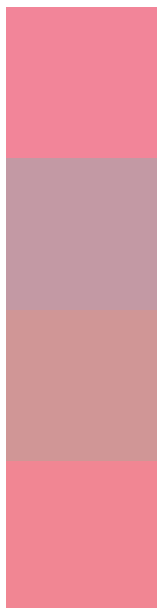
38.9024, 38.0985, 33.3204



Tritanopia

49.8348, 37.7646, 31.0483

Trichromacy



Original Color

50.7552, 37.9522, 34.7874

Protanomaly

40.5977, 37.0649, 40.1365

Deuteranomaly

42.4238, 37.4246, 33.8419

Tritanomaly

50.0672, 37.8576, 32.2722

Monochromacy



Original Color

50.7552, 37.9522, 34.7874

Achromatopsia

37.2190, 39.1572, 42.6422

Achromatomaly

40.8379, 37.6891, 39.7727

CSS Examples

Text

The CSS property to change the color of the text to XYZ 50.7552, 37.9522, 34.7874 is called "color". The color property can be set on classes, ids or directly on the HTML element.

This example shows how text in the color `rgb(242, 133, 153)` looks like.

```
.text, #text, p{  
    color:rgb(242, 133, 153)  
}
```

If you want to add a text shadow in that color use the text-shadow property, you can generate a text shadow directly with our [CSS Text Shadow Generator](#).

Here you see how black text with a 4 pixel rgb(242, 133, 153) colored shadow looks like.

```
.shadow{ text-shadow: 4px 4px 2px rgb(242, 133, 153) }
```

Border

The CSS property to change the border of an element to XYZ 50.7552, 37.9522, 34.7874 is called "border". The border property can be set on classes, ids or directly on the HTML element.

This example shows the color as border, it can be applied via the CSS property "border" or "border-color".

```
.border, #border, table{ border:4px solid rgb(242, 133, 153) }
```


If only the border color should be changed use the property `border-color`.

```
.border{ border-color:rgb(242, 133, 153) }
```

If you want to add a box shadow in that color use:

Here you see how a box with a 4 pixel `rgb(242, 133, 153)` colored shadow looks like.

```
.boxshadow{ -moz-box-shadow:4px 4px 4px  
4px rgb(242, 133, 153); -webkit-box-  
shadow:4px 4px 4px 4px rgb(242, 133, 153);  
box-shadow:4px 4px 4px 4px rgb(242, 133,  
153) }
```

Background

The CSS property to change the background color of an element to XYZ 50.7552, 37.9522, 34.7874 is called "background". The background property can be set on classes, ids or directly on the HTML element.

```
.background, #background, body{  
background: rgb(242, 133, 153) }
```

If only the background color should be changed can be used:

```
.background{ background-color: rgb(242,  
133, 153) }
```

This example shows the color as background, it is applied via the CSS property "background".

To optimize and compress your CSS code, you can use our [online CSS compressor and optimizer](#) based on csstidy. If you want to create a linear or radial gradient as background or border, check our [CSS Gradient Generator](#).

Hey! You found this booklet interesting? Support Converting Colors with the new Membership Option!

The pro membership hides all ads, plus gives you double the colors in the color bucket, and more awesome pro features!

[Learn more, Memberships starting at \\$2.50/m!](#)

**Follow me
on Twitter!**

@ConvertingColor