

# Converting Colors

XYZ(50.8594, 36.2563, 31.6312)

Have a look what the booklet for  
XYZ(50.8594, 36.2563, 31.6312)  
contains.

<b>XYZ(50.7537, 36.2648, 31.5189)</b> .....	3
<i><b>Conversions</b></i> .....	4
<i><b>Details</b></i> .....	6
<i><b>Harmonies</b></i> .....	12
<i><b>Previews</b></i> .....	24
<i><b>Color Blindness Simulation</b></i> .....	28
<i><b>CSS Examples</b></i> .....	31

# Color

**XYZ(50.7537, 36.2648,  
31.5189)**

# Conversions

## Conversions Part 1

Format	Color
Hex	F77C92
RGB	247, 124, 146
RGB Percent	97%, 49%, 57%
CMY	0.0314, 0.5137, 0.4274
CMYK	0.00, 0.50, 0.41, 0.03
HSL	349°, 88%, 73%
HSV	349°, 50%, 97%
XYZ	50.7537, 36.2648, 31.5189
YIQ	163.2850, 66.2460, 32.9180

# Conversions

## Conversions Part 2

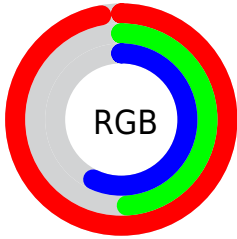
Format	Color
R <sub>Y</sub> B	247, 124, 146
Decimal	16219282
CIE Lab	66.72, 49.09, 10.32
CIE LCh	67, 50.159, 11.875
Yxy	36.2648, 0.4282, 0.3059
Android (android.graphics.Color)	4294409362 (0xFFFF77C92)
YUV	163.2850, -8.5215, 73.4181
Hunter-Lab	60.2203, 45.0545, 11.1222

# Details

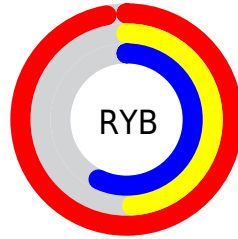
The XYZ color **50.7537, 36.2648, 31.5189** is a light color, and the websafe version is hex **FF9999**. A complement of this color would be **55.1655, 76.2436, 83.0478**, and the grayscale version is **34.9657, 36.7866, 40.0606**.

A 20% lighter version of the original color is **67.7854, 57.6703, 62.2024**, and **24.7950, 15.7896, 12.8072** is the 20% darker color. If you saturate the color by 10%, you get **46.5964, 30.2553, 23.0272**, and if you desaturate by 10%, it is **55.9679, 43.9402, 41.7446**.

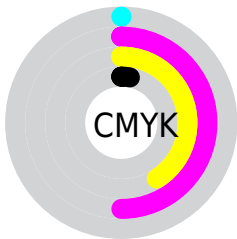
# Distribution



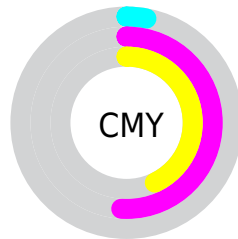
- Red (97%)
- Green (49%)
- Blue (57%)



- Red (97%)
- Yellow (49%)
- Blue (57%)



- Cyan (0%)
- Magenta (50%)
- Yellow (41%)
- Black (3%)



- Cyan (3%)
- Magenta (51%)
- Yellow (43%)

# Brightness & Saturation Gradients

These gradients show how the XYZ color 50.7537, 36.2648, 31.5189 changes by changing the brightness by 10 percent. The first figure shows a shift by +10% for each color and the second figure -10%.

Similar to the brightness gradients but the following saturation gradients show a change of the XYZ color 50.7537, 36.2648, 31.5189 by changing the saturation by 10% instead.



50.7537, 36.2648,  
31.5189

50.7537, 36.2648,  
31.5189

380.0095,  
330.1165, 323.3467

36.2329, 24.6388,  
20.7325

90.4758, 69.4406,  
63.1452

24.7850, 15.8081,  
12.7393

116.4077, 91.7591,  
84.8223

16.0449, 9.3885,  
7.1207

146.8741,  
118.4106, 110.9666

9.6469, 4.9954,  
3.4581

182.2402,  
149.7795, 141.9968

5.2260, 2.2446,  
1.3330

222.8714,  
186.2501, 178.3313

2.4166, 0.7441,  
0.0886

269.1332,

0.8534, 0.0000,

228.2069, 220.3888

0.0000

321.3908,  
276.0342, 268.5878

■ 0.0000, 0.0000,  
0.0000

■ 50.7537, 36.2648,  
31.5189

■ 50.7537, 36.2648,  
31.5189

■ 46.5964, 30.2553,  
23.0272

■ 55.9679, 43.9402,  
41.7446

■ 43.4194, 25.7821,  
16.1700

■ 62.3029, 53.3871,  
53.7922

■ 41.1401, 22.7057,  
10.8402

■ 69.8205, 64.7091,  
67.7458

■ 39.6601, 20.8584,  
6.9168

■ 78.5775, 78.0001,  
83.6837

■ 38.8289, 19.9714,  
4.2493

■ 88.6267, 93.3476,  
101.6799

■ 38.8155, 19.9572,  
4.2058

■ 92.1677, 98.5141,  
108.7651

# Harmonies

## Analogous

The Analogous color harmony consists of three colors that are next to each other on the color wheel.



50.2242, 36.2648, 53.9163



50.7537, 36.2648, 31.5189



46.4744, 36.2648, 17.6948

# Triad

The Triadic color harmony groups three colors that are evenly spaced from another and form a triangle on the color wheel.



50.7537, 36.2648, 31.5189



25.6418, 36.2648, 15.8797



30.1384, 36.2648, 93.7879

# Complementary

The Complementary color scheme is a pair of colors which are on the opposite of each other on the color wheel.



50.7537, 36.2648, 31.5189



55.1655, 76.2436, 83.0478

# Split Complementary

Split-complementary colors differ from the complementary color scheme. The scheme consists of three colors, the original color and two neighbors of the complement color.



24.7320, 36.2648, 74.3341



50.7537, 36.2648, 31.5189



22.4096, 36.2648, 27.8921

# Square

The Square scheme is like the rectangle color scheme, but the four colors are evenly spaced on the color wheel.



50.7537, 36.2648, 31.5189



31.5611, 36.2648, 11.1386



22.1030, 36.2648, 48.6943



37.5494, 36.2648, 95.8964



# Rectangle

The Rectangle color scheme consists of four colors that form a rectangle on the color wheel.



50.7537, 36.2648, 31.5189



41.7907, 36.2648, 12.9624



22.1030, 36.2648, 48.6943



28.0560, 36.2648, 88.8017

# Sweetspot

The Sweet Spot groups the original color and five complimentary colors.



50.7547, 36.2667, 31.5196



79.3874, 76.1165, 80.7375



54.8776, 37.0521, 92.2549



16.5746, 15.6589, 16.5194



0.0000, 0.0000, 0.0000



20.3446, 21.4041, 23.3091



# Same Dimension

The Same Dimension uses a secret algorithm to generate beautiful new colors.



50.7547, 36.2667, 31.5196



49.9777, 32.3573, 24.5057



55.0855, 47.4080, 25.3186



16.6201, 16.5309, 17.7460



20.5647, 10.5693, 2.4162



1.8404, 0.9421, 0.3861



# Inverse Universe

The Inverse Universe completely reimagines the original color for something new.



50.7547, 36.2667, 31.5196



49.9777, 32.3573, 24.5057



47.6704, 56.1383, 96.3188



16.6201, 16.5309, 17.7460



20.5647, 10.5693, 2.4162



1.8404, 0.9421, 0.3861



# Previews

## White Background



This preview shows how the XYZ color 50.7537, 36.2648, 31.5189 looks on a white background.

## Color Contrast Check

Large Text (above 18pt) WCAG AA × Fail

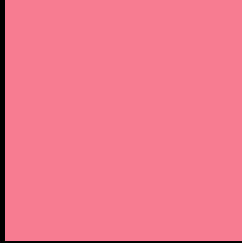
Any Text WCAG AA × Fail

Large Text (above 18pt) WCAG AAA × Fail

Any Text WCAG AAA × Fail



# Black Background



This preview shows how the XYZ color 50.7537, 36.2648, 31.5189 looks on a black background.

## Color Contrast Check

Large Text (above 18pt) WCAG AA ✓ Pass

Any Text WCAG AA ✓ Pass

Large Text (above 18pt) WCAG AAA ✓ Pass

Any Text WCAG AAA ✓ Pass

If you want to check with other color combinations, try the [Color Contrast Checker](#).

**XYZ 50.7537, 36.2648, 31.5189**

## **Background**



This preview shows how black text looks on a background with the XYZ color 50.7537, 36.2648, 31.5189.



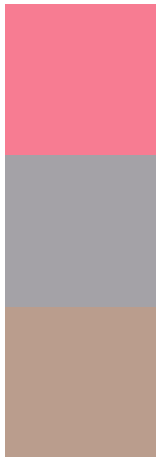
This preview shows how white text looks on a background with the XYZ color 50.7537, 36.2648,



# Color Blindness Simulation

Color vision deficiency is a very complex topic, and I could not describe the different causes any better than Wikipedia does, so if you want to learn more, you should check out their [article about color blindness](#).

## Dichromacy



### Original Color

50.7537, 36.2648, 31.5189

### Protanopia

35.2052, 36.5232, 41.7534

### Deuteranopia

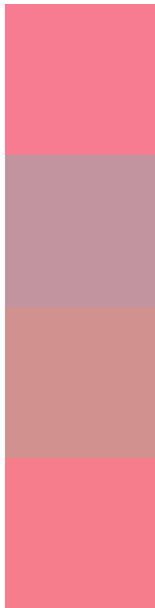
37.1144, 36.4761, 30.2838



## Tritanopia

49.8401, 36.2638, 27.2944

# Trichromacy



## Original Color

50.7537, 36.2648, 31.5189

## Protanomaly

39.0960, 35.1523, 37.5254

## Deuteranomaly

41.0957, 35.6439, 30.7006

## Tritanomaly

49.9999, 36.1241, 28.7635

# Monochromacy



## Original Color

50.7537, 36.2648, 31.5189

## Achromatopsia

34.8123, 36.6253, 39.8849

## Achromatomaly

39.0814, 35.3985, 36.6711

# CSS Examples

## Text

The CSS property to change the color of the text to XYZ 50.7537, 36.2648, 31.5189 is called "color". The color property can be set on classes, ids or directly on the HTML element.

This example shows how text in the color `rgb(247, 124, 146)` looks like.

```
.text, #text, p{  
    color:rgb(247, 124, 146)  
}
```

If you want to add a text shadow in that color use the text-shadow property, you can generate a text shadow directly with our [CSS Text Shadow Generator](#).

Here you see how black text with a 4 pixel rgb(247, 124, 146) colored shadow looks like.

```
.shadow{ text-shadow: 4px 4px 2px rgb(247, 124, 146) }
```

## Border

The CSS property to change the border of an element to XYZ 50.7537, 36.2648, 31.5189 is called "border". The border property can be set on classes, ids or directly on the HTML element.

This example shows the color as border, it can be applied via the CSS property "border" or "border-color".

```
.border, #border, table{ border:4px solid rgb(247, 124, 146) }
```



If only the border color should be changed use the property border-color.

```
.border{ border-color:rgb(247, 124, 146) }
```

If you want to add a box shadow in that color use:

Here you see how a box with a 4 pixel rgb(247, 124, 146) colored shadow looks like.

```
.boxshadow{ -moz-box-shadow:4px 4px 4px  
4px rgb(247, 124, 146); -webkit-box-  
shadow:4px 4px 4px 4px rgb(247, 124, 146);  
box-shadow:4px 4px 4px 4px rgb(247, 124,  
146) }
```

# Background

The CSS property to change the background color of an element to XYZ 50.7537, 36.2648, 31.5189 is called "background". The background property can be set on classes, ids or directly on the HTML element.

```
.background, #background, body{  
background: rgb(247, 124, 146) }
```

If only the background color should be changed can be used:

```
.background{ background-color: rgb(247,  
124, 146) }
```

This example shows the color as background, it is applied via the CSS property "background".

To optimize and compress your CSS code, you can use our [online CSS compressor and optimizer](#) based on csstidy. If you want to create a linear or radial gradient as background or border, check our [CSS Gradient Generator](#).

Hey! You found this booklet interesting? Support Converting Colors with the new Membership Option!

The pro membership hides all ads, plus gives you double the colors in the color bucket, and more awesome pro features!

**[Learn more, Memberships starting at \\$2.50/m!](#)**

**Follow me  
on Twitter!**

@ConvertingColor