

Converting Colors

XYZ(50.9679, 51.5820, 37.6934)

Have a look what the booklet for
XYZ(50.9679, 51.5820, 37.6934)
contains.

XYZ(51.1232, 51.7470, 37.8655)	3
<i>Conversions</i>	4
<i>Details</i>	6
<i>Harmonies</i>	12
<i>Previews</i>	24
<i>Color Blindness Simulation</i>	28
<i>CSS Examples</i>	31

Color

**XYZ(51.1232, 51.7470,
37.8655)**

Conversions

Conversions Part 1

Format	Color
Hex	D6BA9A
RGB	214, 186, 154
RGB Percent	84%, 73%, 60%
CMY	0.1608, 0.2706, 0.3961
CMYK	0.00, 0.13, 0.28, 0.16
HSL	32°, 42%, 72%
HSV	32°, 28%, 84%
XYZ	51.1232, 51.7470, 37.8655
YIQ	190.7240, 26.9600, -4.0160

Conversions

Conversions Part 2

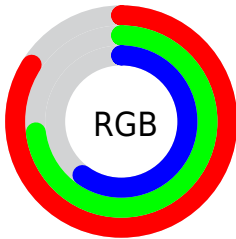
Format	Color
RYB	207, 214, 154
Decimal	14072474
CIELab	77.13, 5.21, 19.92
CIELCh	77, 20.592, 75.350
Yxy	51.7470, 0.3633, 0.3677
Android (android.graphics.Color)	4292262554 (0xFFD6BA9A)
YUV	190.7240, -18.1049, 20.4131
Hunter-Lab	71.9354, 0.9698, 19.1456

Details

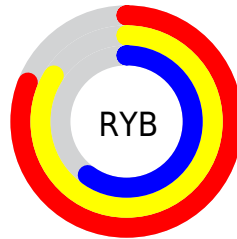
The XYZ color **51.1232, 51.7470, 37.8655** is a light color, and the websafe version is hex **CCCC99**. A complement of this color would be **42.1916, 45.1798, 70.1154**, and the grayscale version is **49.4531, 52.0285, 56.6590**.

A 20% lighter version of the original color is **84.3773, 89.3183, 72.4675**, and **24.9363, 25.0234, 16.3477** is the 20% darker color. If you saturate the color by 10%, you get **47.4671, 47.0372, 28.6235**, and if you desaturate by 10%, it is **55.2468, 56.8827, 48.8321**.

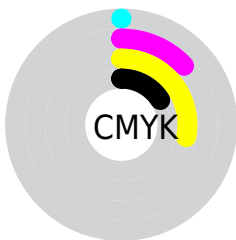
Distribution



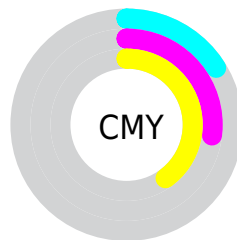
- Red (84%)
- Green (73%)
- Blue (60%)



- Red (81%)
- Yellow (84%)
- Blue (60%)



- Cyan (0%)
- Magenta (13%)
- Yellow (28%)
- Black (16%)



- Cyan (16%)
- Magenta (27%)
- Yellow (40%)

Brightness & Saturation Gradients

These gradients show how the XYZ color 51.1232, 51.7470, 37.8655 changes by changing the brightness by 10 percent. The first figure shows a shift by +10% for each color and the second figure -10%.

Similar to the brightness gradients but the following saturation gradients show a change of the XYZ color 51.1232, 51.7470, 37.8655 by changing the saturation by 10% instead.

■ 51.1232, 51.7470,
37.8655

■ 51.1232, 51.7470,
37.8655

381.4220,
393.4591, 352.3235

■ 36.5281, 36.8035,
25.5773

■ 91.0188, 92.7580,
73.1031

■ 25.0143, 25.0553,
16.2848

■ 117.0499,
119.5943, 96.8895

■ 16.2165, 16.1183,
9.5693

147.6239,
151.1635, 125.3458

■ 9.7693, 9.6079,
5.0125

183.1059,
187.8502, 158.8904

■ 5.3074, 5.1398,
2.1957

223.8614,
230.0388, 197.9420

■ 2.4653, 2.3295,
0.6719

270.2556,

■ 0.8778, 0.7893,

278.1135, 242.9190

0.0000

322.6541,
332.4588, 294.2400

■ 0.0000, 0.0000,
0.0000

■ 51.1232, 51.7470,
37.8655

■ 51.1232, 51.7470,
37.8655

■ 47.4671, 47.0372,
28.6235

■ 55.2468, 56.8827,
48.8321

■ 44.2546, 42.7335,
21.0131

■ 59.8524, 62.4492,
61.6035

■ 41.4655, 38.8247,
14.9370

■ 64.9588, 68.4603,
76.2585

■ 39.0762, 35.2962,
10.2866

■ 70.5824, 74.9271,
92.8704

■ 37.0602, 32.1322,
6.9383

■ 75.7573, 81.4674,
106.3397

■ 35.3866, 29.3149,
4.7473

■ 78.7119, 87.3767,
107.3246

■ 34.0127, 26.8214,
3.5050

■ 81.5417, 93.0362,
108.2678

■ 33.7658, 26.3645,
3.3092

Harmonies

Analogous

The Analogous color harmony consists of three colors that are next to each other on the color wheel.



54.6974, 51.7470, 42.2861



51.1232, 51.7470, 37.8655



47.2073, 51.7470, 37.9182

Triad

The Triadic color harmony groups three colors that are evenly spaced from another and form a triangle on the color wheel.



51.1232, 51.7470, 37.8655



42.2400, 51.7470, 62.2792



54.7677, 51.7470, 72.9922

Complementary

The Complementary color scheme is a pair of colors which are on the opposite of each other on the color wheel.



51.1232, 51.7470, 37.8655



42.1916, 45.1798, 70.1154

Split Complementary

Split-complementary colors differ from the complementary color scheme. The scheme consists of three colors, the original color and two neighbors of the complement color.



51.2150, 51.7470, 79.9396



51.1232, 51.7470, 37.8655



44.0541, 51.7470, 73.2153

Square

The Square scheme is like the rectangle color scheme, but the four colors are evenly spaced on the color wheel.



51.1232, 51.7470, 37.8655



42.2183, 51.7470, 51.0372



47.2944, 51.7470, 80.0263



56.8765, 51.7470, 62.0058

Rectangle

The Rectangle color scheme consists of four colors that form a rectangle on the color wheel.



51.1232, 51.7470, 37.8655



44.9333, 51.7470, 40.4478



47.2944, 51.7470, 80.0263



53.6946, 51.7470, 75.9384

Sweetspot

The Sweet Spot groups the original color and five complimentary colors.



51.1245, 51.7494, 37.8666



88.9759, 92.8316, 91.5234



47.7311, 40.7853, 49.6132



18.8117, 19.5916, 18.9344



0.0000, 0.0000, 0.0000



20.3446, 21.4041, 23.3091

Same Dimension

The Same Dimension uses a secret algorithm to generate beautiful new colors.



51.1245, 51.7494, 37.8666



72.5209, 72.4684, 47.3580



57.0310, 64.4236, 40.0016



12.9662, 13.5067, 13.0844



20.5143, 16.1459, 2.0352



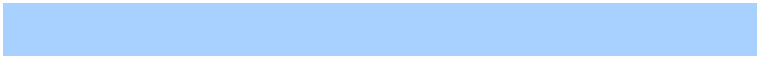
1.3198, 1.1389, 0.1503

Inverse Universe

The Inverse Universe completely reimagines the original color for something new.



42.1916, 45.1798, 70.1154



57.0025, 61.0580, 103.3888



37.4041, 35.0348, 68.4096



12.2155, 12.9544, 15.7941



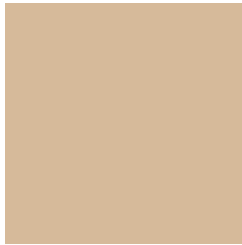
10.1844, 8.6306, 39.5823



0.6967, 0.6854, 2.4149

Previews

White Background



This preview shows how the XYZ color 51.1232, 51.7470, 37.8655 looks on a white background.

Color Contrast Check

Large Text (above 18pt) WCAG AA × Fail

Any Text WCAG AA × Fail

Large Text (above 18pt) WCAG AAA × Fail

Any Text WCAG AAA × Fail

Black Background



This preview shows how the XYZ color 51.1232, 51.7470, 37.8655 looks on a black background.

Color Contrast Check

Large Text (above 18pt) WCAG AA ✓ Pass

Any Text WCAG AA ✓ Pass

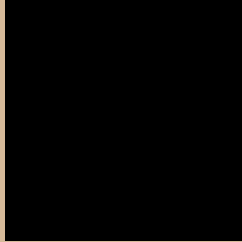
Large Text (above 18pt) WCAG AAA ✓ Pass

Any Text WCAG AAA ✓ Pass

If you want to check with other color combinations, try the [Color Contrast Checker](#).

XYZ 51.1232, 51.7470, 37.8655

Background



This preview shows how black text looks on a background with the XYZ color 51.1232, 51.7470, 37.8655.



This preview shows how white text looks on a background with the XYZ color 51.1232, 51.7470,

37.8655.

Color Blindness Simulation

Color vision deficiency is a very complex topic, and I could not describe the different causes any better than Wikipedia does, so if you want to learn more, you should check out their [article about color blindness](#).

Dichromacy



Original Color

51.1232, 51.7470, 37.8655

Protanopia

48.7713, 51.7838, 38.8772

Deuteranopia

52.6687, 51.6057, 38.1953



Tritanopia

55.2723, 51.5976, 58.0851

Trichromacy



Original Color

51.1232, 51.7470, 37.8655

Protanomaly

49.5676, 51.8836, 38.4124

Deuteranomaly

51.9703, 51.5530, 38.2219

Tritanomaly

53.4799, 51.4623, 49.7623

Monochromacy



Original Color

51.1232, 51.7470, 37.8655

Achromatopsia

49.5206, 52.0996, 56.7364

Achromatomaly

49.7867, 51.7517, 49.4845

CSS Examples

Text

The CSS property to change the color of the text to XYZ 51.1232, 51.7470, 37.8655 is called "color". The color property can be set on classes, ids or directly on the HTML element.

This example shows how text in the color `rgb(214, 186, 154)` looks like.

```
.text, #text, p{  
    color:rgb(214, 186, 154)  
}
```

If you want to add a text shadow in that color use the text-shadow property, you can generate a text shadow directly with our [CSS Text Shadow Generator](#).

Here you see how black text with a 4 pixel rgb(214, 186, 154) colored shadow looks like.

```
.shadow{ text-shadow: 4px 4px 2px rgb(214, 186, 154) }
```

Border

The CSS property to change the border of an element to XYZ 51.1232, 51.7470, 37.8655 is called "border". The border property can be set on classes, ids or directly on the HTML element.

This example shows the color as border, it can be applied via the CSS property "border" or "border-color".

```
.border, #border, table{ border:4px solid rgb(214, 186, 154) }
```


If only the border color should be changed use the property border-color.

```
.border{ border-color:rgb(214, 186, 154) }
```

If you want to add a box shadow in that color use:

Here you see how a box with a 4 pixel rgb(214, 186, 154) colored shadow looks like.

```
.boxshadow{ -moz-box-shadow:4px 4px 4px  
4px rgb(214, 186, 154); -webkit-box-  
shadow:4px 4px 4px 4px rgb(214, 186, 154);  
box-shadow:4px 4px 4px 4px rgb(214, 186,  
154) }
```

Background

The CSS property to change the background color of an element to XYZ 51.1232, 51.7470, 37.8655 is called "background". The background property can be set on classes, ids or directly on the HTML element.

```
.background, #background, body{  
background: rgb(214, 186, 154) }
```

If only the background color should be changed can be used:

```
.background{ background-color: rgb(214,  
186, 154) }
```

This example shows the color as background, it is applied via the CSS property "background".

To optimize and compress your CSS code, you can use our [online CSS compressor and optimizer](#) based on csstidy. If you want to create a linear or radial gradient as background or border, check our [CSS Gradient Generator](#).

Hey! You found this booklet interesting? Support Converting Colors with the new Membership Option!

The pro membership hides all ads, plus gives you double the colors in the color bucket, and more awesome pro features!

[Learn more, Memberships starting at \\$2.50/m!](#)

**Follow me
on Twitter!**

@ConvertingColor