

Converting Colors

XYZ(51.0116, 50.5332, 49.1364)

Have a look what the booklet for
XYZ(51.0116, 50.5332, 49.1364)
contains.

XYZ(50.9818, 50.4912, 49.1782)	3
<i>Conversions</i>	4
<i>Details</i>	6
<i>Harmonies</i>	12
<i>Previews</i>	24
<i>Color Blindness Simulation</i>	28
<i>CSS Examples</i>	31

Color

**XYZ(50.9818, 50.4912,
49.1782)**

Conversions

Conversions Part 1

Format	Color
Hex	D0B7B2
RGB	208, 183, 178
RGB Percent	82%, 72%, 70%
CMY	0.1843, 0.2823, 0.3020
CMYK	0.00, 0.12, 0.14, 0.18
HSL	10°, 24%, 76%
HSV	10°, 14%, 82%
XYZ	50.9818, 50.4912, 49.1782
YIQ	189.9050, 16.5050, 3.7450

Conversions

Conversions Part 2

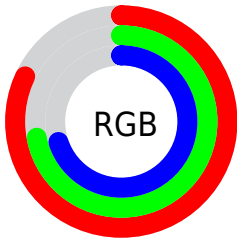
Format	Color
R _Y B	208, 184, 178
Decimal	13678514
CIE Lab	76.37, 8.11, 5.81
CIE LCh	76, 9.972, 35.620
Yxy	50.4912, 0.3384, 0.3352
Android (android.graphics.Color)	4291868594 (0xFFD0B7B2)
YUV	189.9050, -5.8692, 15.8693
Hunter-Lab	71.0572, 3.7194, 8.7058

Details

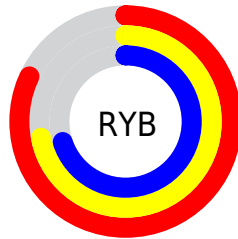
The XYZ color **50.9818, 50.4912, 49.1782** is a light color, and the websafe version is hex **CCCCCC**. A complement of this color would be **51.1009, 56.7298, 67.9317**, and the grayscale version is **48.9161, 51.4635, 56.0438**.

A 20% lighter version of the original color is **86.9578, 88.9335, 90.4246**, and **24.8212, 24.2182, 22.7684** is the 20% darker color. If you saturate the color by 10%, you get **45.6927, 43.0053, 37.8810**, and if you desaturate by 10%, it is **57.0305, 58.9886, 62.2921**.

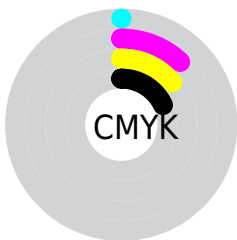
Distribution



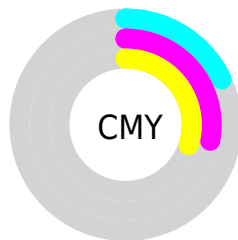
- Red (82%)
- Green (72%)
- Blue (70%)



- Red (82%)
- Yellow (72%)
- Blue (70%)



- Cyan (0%)
- Magenta (12%)
- Yellow (14%)
- Black (18%)





- Cyan (18%)
- Magenta (28%)
- Yellow (30%)

Brightness & Saturation Gradients


These gradients show how the XYZ color 50.9818, 50.4912, 49.1782 changes by changing the brightness by 10 percent. The first figure shows a shift by +10% for each color and the second figure -10%.


Similar to the brightness gradients but the following saturation gradients show a change of the XYZ color 50.9818, 50.4912, 49.1782 by changing the saturation by 10% instead.


 50.9818, 50.4912,
49.1782

 50.9818, 50.4912,
49.1782


380.8819,
388.5837, 400.0860

 36.4151, 35.8038,
34.3943


 90.8110, 90.9022,
90.3398

 24.9266, 24.2827,
22.9168


116.8043,
117.3947, 117.5545

 16.1508, 15.5435,
14.3274


147.3371,
148.5910, 149.7499

 9.7224, 9.2017,
8.2074

182.7748,
184.8755, 187.3446

 5.2762, 4.8730,
4.1383

223.4828,
226.6327, 230.7569

 2.4466, 2.1729,
1.7015

269.8264,

 0.8684, 0.7052,

274.2468, 280.4056

0.3618

322.1710,
328.1024, 336.7091

■ 0.0000, 0.0000,
0.0000

■ 50.9818, 50.4912,
49.1782

■ 50.9818, 50.4912,
49.1782

■ 45.6927, 43.0053,
37.8810

■ 57.0305, 58.9886,
62.2921

■ 41.1290, 36.4867,
28.3172

■ 63.8632, 68.5263,
77.2947

■ 37.2599, 30.8977,
20.4016

■ 71.5082, 79.1403,
94.2579

■ 34.0507, 26.1956,
14.0407

■ 78.9762, 90.4571,
107.9052

■ 31.4637, 22.3344,
9.1314

■ 79.8227, 92.1500,
108.1874

■ 29.4573, 19.2638,
5.5581

■ 27.9846, 16.9281,
3.1877

■ 26.9907, 15.2638,
1.8588

■ 26.6047, 14.5941,
1.4147

Harmonies

Analogous

The Analogous color harmony consists of three colors that are next to each other on the color wheel.



51.6693, 50.4912, 53.9711



50.9818, 50.4912, 49.1782



49.4943, 50.4912, 46.0961

Triad

The Triadic color harmony groups three colors that are evenly spaced from another and form a triangle on the color wheel.



50.9818, 50.4912, 49.1782



44.7802, 50.4912, 50.8226



48.3444, 50.4912, 65.9079

Complementary

The Complementary color scheme is a pair of colors which are on the opposite of each other on the color wheel.



50.9818, 50.4912, 49.1782



51.1009, 56.7298, 67.9317

Split Complementary

Split-complementary colors differ from the complementary color scheme. The scheme consists of three colors, the original color and two neighbors of the complement color.



46.5172, 50.4912, 64.9296



50.9818, 50.4912, 49.1782



44.4904, 50.4912, 55.9940

Square

The Square scheme is like the rectangle color scheme, but the four colors are evenly spaced on the color wheel.



50.9818, 50.4912, 49.1782



45.9207, 50.4912, 47.0013



45.1183, 50.4912, 61.2132



50.1214, 50.4912, 63.8060

Rectangle

The Rectangle color scheme consists of four colors that form a rectangle on the color wheel.



50.9818, 50.4912, 49.1782



48.2663, 50.4912, 45.3086



45.1183, 50.4912, 61.2132



47.7155, 50.4912, 65.9299

Sweetspot

The Sweet Spot groups the original color and five complimentary colors.



50.9832, 50.4935, 49.1793



90.7994, 94.0573, 99.5954



52.7129, 49.5632, 63.2889



19.2686, 19.8994, 20.9548



0.0000, 0.0000, 0.0000



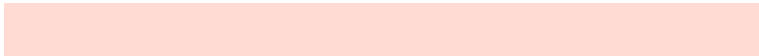
20.3446, 21.4041, 23.3091

Same Dimension

The Same Dimension uses a secret algorithm to generate beautiful new colors.



50.9832, 50.4935, 49.1793



78.3799, 76.5965, 72.7097



54.2430, 57.0131, 50.2659



11.9658, 12.1223, 12.3212



16.6293, 9.1917, 0.8977



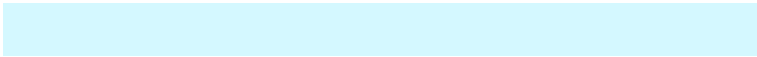
0.9804, 0.6150, 0.0670

Inverse Universe

The Inverse Universe completely reimagines the original color for something new.



51.1009, 56.7298, 67.9317



78.5972, 88.1583, 107.4815



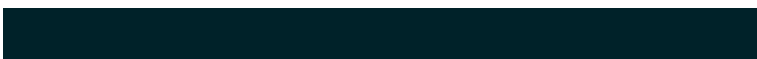
47.7291, 49.9862, 66.8078



11.9836, 13.0574, 15.1324



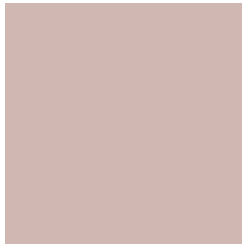
16.5074, 21.6615, 40.5035



0.9686, 1.3025, 2.2799

Previews

White Background



This preview shows how the XYZ color 50.9818, 50.4912, 49.1782 looks on a white background.

Color Contrast Check

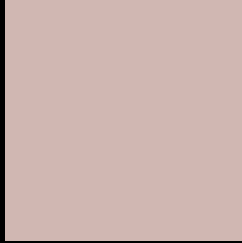
Large Text (above 18pt) WCAG AA × Fail

Any Text WCAG AA × Fail

Large Text (above 18pt) WCAG AAA × Fail

Any Text WCAG AAA × Fail

Black Background



This preview shows how the XYZ color 50.9818, 50.4912, 49.1782 looks on a black background.

Color Contrast Check

Large Text (above 18pt) WCAG AA ✓ Pass

Any Text WCAG AA ✓ Pass

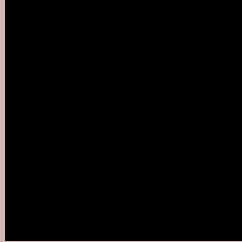
Large Text (above 18pt) WCAG AAA ✓ Pass

Any Text WCAG AAA ✓ Pass

If you want to check with other color combinations, try the [Color Contrast Checker](#).

XYZ 50.9818, 50.4912, 49.1782

Background



This preview shows how black text looks on a background with the XYZ color 50.9818, 50.4912, 49.1782.



This preview shows how white text looks on a background with the XYZ color 50.9818, 50.4912,

Color Blindness Simulation

Color vision deficiency is a very complex topic, and I could not describe the different causes any better than Wikipedia does, so if you want to learn more, you should check out their [article about color blindness](#).

Dichromacy



Original Color

50.9818, 50.4912, 49.1782

Protanopia

48.5718, 50.7720, 50.9560

Deuteranopia

51.6278, 50.5191, 49.1496



Tritanopia

52.7499, 50.2843, 58.5554

Trichromacy



Original Color

50.9818, 50.4912, 49.1782

Protanomaly

49.3503, 50.5552, 50.3371

Deuteranomaly

51.3422, 50.3719, 49.1362

Tritanomaly

52.0037, 50.2772, 55.1077

Monochromacy



Original Color

50.9818, 50.4912, 49.1782

Achromatopsia

48.9429, 51.4918, 56.0745

Achromatomaly

49.6592, 50.9561, 53.6726

CSS Examples

Text

The CSS property to change the color of the text to XYZ 50.9818, 50.4912, 49.1782 is called "color". The color property can be set on classes, ids or directly on the HTML element.

This example shows how text in the color `rgb(208, 183, 178)` looks like.

```
.text, #text, p{  
    color:rgb(208, 183, 178)  
}
```

If you want to add a text shadow in that color use the text-shadow property, you can generate a text shadow directly with our [CSS Text Shadow Generator](#).

Here you see how black text with a 4 pixel rgb(208, 183, 178) colored shadow looks like.

```
.shadow{ text-shadow: 4px 4px 2px rgb(208, 183, 178) }
```

Border

The CSS property to change the border of an element to XYZ 50.9818, 50.4912, 49.1782 is called "border". The border property can be set on classes, ids or directly on the HTML element.

This example shows the color as border, it can be applied via the CSS property "border" or "border-color".

```
.border, #border, table{ border:4px solid rgb(208, 183, 178) }
```


If only the border color should be changed use the property `border-color`.

```
.border{ border-color:rgb(208, 183, 178) }
```

If you want to add a box shadow in that color use:

Here you see how a box with a 4 pixel `rgb(208, 183, 178)` colored shadow looks like.

```
.boxshadow{ -moz-box-shadow:4px 4px 4px  
4px rgb(208, 183, 178); -webkit-box-  
shadow:4px 4px 4px 4px rgb(208, 183, 178);  
box-shadow:4px 4px 4px 4px rgb(208, 183,  
178) }
```

Background

The CSS property to change the background color of an element to XYZ 50.9818, 50.4912, 49.1782 is called "background". The background property can be set on classes, ids or directly on the HTML element.

```
.background, #background, body{  
background: rgb(208, 183, 178) }
```

If only the background color should be changed can be used:

```
.background{ background-color: rgb(208,  
183, 178) }
```

This example shows the color as background, it is applied via the CSS property "background".

To optimize and compress your CSS code, you can use our [online CSS compressor and optimizer](#) based on csstidy. If you want to create a linear or radial gradient as background or border, check our [CSS Gradient Generator](#).

Hey! You found this booklet interesting? Support Converting Colors with the new Membership Option!

The pro membership hides all ads, plus gives you double the colors in the color bucket, and more awesome pro features!

[Learn more, Memberships starting at \\$2.50/m!](#)

**Follow me
on Twitter!**

@ConvertingColor