

Converting Colors

XYZ(51.0701, 50.5967, 54.8276)

Have a look what the booklet for
XYZ(51.0701, 50.5967, 54.8276)
contains.

XYZ(51.1194, 50.7492, 54.6782)	3
<i>Conversions</i>	4
<i>Details</i>	6
<i>Harmonies</i>	12
<i>Previews</i>	24
<i>Color Blindness Simulation</i>	28
<i>CSS Examples</i>	31

Color

**XYZ(51.1194, 50.7492,
54.6782)**

Conversions

Conversions Part 1

Format	Color
Hex	CCB8BC
RGB	204, 184, 188
RGB Percent	80%, 72%, 74%
CMY	0.2000, 0.2784, 0.2627
CMYK	0.00, 0.10, 0.08, 0.20
HSL	348°, 16%, 76%
HSV	348°, 10%, 80%
XYZ	51.1194, 50.7492, 54.6782
YIQ	190.4360, 10.6360, 5.4840

Conversions

Conversions Part 2

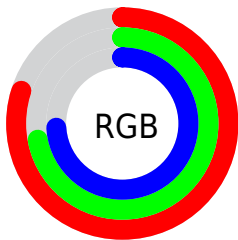
Format	Color
R _Y B	204, 184, 188
Decimal	13416636
CIE Lab	76.53, 7.79, 0.56
CIE LCh	77, 7.815, 4.103
Yxy	50.7492, 0.3265, 0.3242
Android (android.graphics.Color)	4291606716 (0xFFCCB8BC)
YUV	190.4360, -1.2009, 11.8956
Hunter-Lab	71.2385, 3.4209, 4.3596

Details

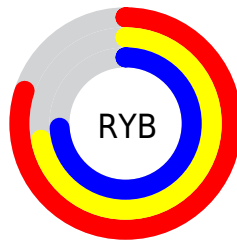
The XYZ color **51.1194, 50.7492, 54.6782** is a light color, and the websafe version is hex **CCCCCC**. A complement of this color would be **51.7873, 57.5474, 63.0247**, and the grayscale version is **49.1985, 51.7607, 56.3674**.

A 20% lighter version of the original color is **88.7292, 90.1118, 98.3047**, and **25.0672, 24.4659, 26.3229** is the 20% darker color. If you saturate the color by 10%, you get **45.5224, 42.2134, 44.6166**, and if you desaturate by 10%, it is **57.5294, 60.5912, 65.9940**.

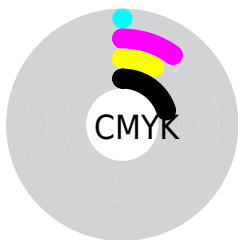
Distribution



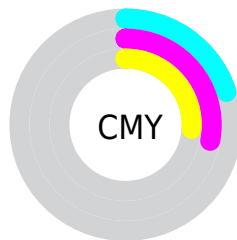
- Red (80%)
- Green (72%)
- Blue (74%)



- Red (80%)
- Yellow (72%)
- Blue (74%)



- Cyan (0%)
- Magenta (10%)
- Yellow (8%)
- Black (20%)





- Cyan (20%)
- Magenta (28%)
- Yellow (26%)

Brightness & Saturation Gradients


These gradients show how the XYZ color 51.1194, 50.7492, 54.6782 changes by changing the brightness by 10 percent. The first figure shows a shift by +10% for each color and the second figure -10%.


Similar to the brightness gradients but the following saturation gradients show a change of the XYZ color 51.1194, 50.7492, 54.6782 by changing the saturation by 10% instead.


 51.1194, 50.7492,
54.6782

 51.1194, 50.7492,
54.6782


381.4075,
389.5886, 421.9385

 36.5251, 36.0090,
38.7473

 91.0132, 91.2839,
98.5357

 25.0120, 24.4412,
26.2569

117.0433,
117.8473, 127.2994

 16.2148, 15.6612,
16.7884


147.6162,
149.1206, 161.1778

 9.7681, 9.2847,
9.9234

183.0970,
185.4881, 200.5893

 5.3065, 4.9274,
5.2433

223.8512,
227.3342, 245.9526

 2.4648, 2.2047,
2.3295

270.2441,

 0.8775, 0.7226,

275.0434, 297.6862

0.7477

322.6411,
329.0001, 356.2087

■ 0.0000, 0.0000,
0.0000

■ 51.1194, 50.7492,
54.6782

■ 51.1194, 50.7492,
54.6782

■ 45.5224, 42.2134,
44.6166

■ 57.5294, 60.5912,
65.9940

■ 40.7016, 34.9225,
35.7624

■ 64.7788, 71.7843,
78.6021

■ 36.6234, 28.8200,
28.0709

■ 72.8983, 84.3793,
92.5428

■ 33.2503, 23.8427,
21.4931

■ 78.4385, 91.4681,
106.6948

■ 30.5413, 19.9214,
15.9766

■ 78.7121, 91.5775,
108.1354

■ 28.4514, 16.9791,
11.4646

■ 26.9294, 14.9285,
7.8948

■ 25.9156, 13.6662,
5.1976

■ 25.3083, 13.0070,
3.2831

Harmonies

Analogous

The Analogous color harmony consists of three colors that are next to each other on the color wheel.



50.8315, 50.7492, 58.8803



51.1194, 50.7492, 54.6782



50.6217, 50.7492, 50.8281

Triad

The Triadic color harmony groups three colors that are evenly spaced from another and form a triangle on the color wheel.



51.1194, 50.7492, 54.6782



46.6632, 50.7492, 48.8023



47.0078, 50.7492, 62.8890

Complementary

The Complementary color scheme is a pair of colors which are on the opposite of each other on the color wheel.



51.1194, 50.7492, 54.6782



51.7873, 57.5474, 63.0247

Split Complementary

Split-complementary colors differ from the complementary color scheme. The scheme consists of three colors, the original color and two neighbors of the complement color.



45.9257, 50.7492, 59.9365



51.1194, 50.7492, 54.6782



45.7296, 50.7492, 51.7860

Square

The Square scheme is like the rectangle color scheme, but the four colors are evenly spaced on the color wheel.



51.1194, 50.7492, 54.6782



48.0330, 50.7492, 47.5469



45.4623, 50.7492, 55.8404



48.4388, 50.7492, 63.7591

Rectangle

The Rectangle color scheme consists of four colors that form a rectangle on the color wheel.



51.1194, 50.7492, 54.6782



49.9173, 50.7492, 48.9366



45.4623, 50.7492, 55.8404



46.5921, 50.7492, 62.1000

Sweetspot

The Sweet Spot groups the original color and five complimentary colors.



51.1208, 50.7514, 54.6793



91.6879, 94.8278, 102.9946



51.8606, 50.9223, 64.2229



19.4373, 20.0086, 21.7144



0.0000, 0.0000, 0.0000



20.3446, 21.4041, 23.3091

Same Dimension

The Same Dimension uses a secret algorithm to generate beautiful new colors.



51.1208, 50.7514, 54.6793



82.3587, 80.5288, 86.4459



51.9686, 53.1269, 52.8656



11.3025, 11.2497, 12.1274



15.9498, 8.1905, 2.1884



0.8505, 0.4336, 0.2584

Inverse Universe

The Inverse Universe completely reimagines the original color for something new.



51.1208, 50.7514, 54.6793



82.3587, 80.5288, 86.4459



50.8621, 54.9398, 65.0510



11.3025, 11.2497, 12.1274



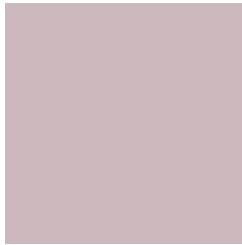
15.9498, 8.1905, 2.1884



0.8505, 0.4336, 0.2584

Previews

White Background



This preview shows how the XYZ color 51.1194, 50.7492, 54.6782 looks on a white background.

Color Contrast Check

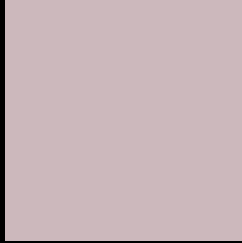
Large Text (above 18pt) WCAG AA × Fail

Any Text WCAG AA × Fail

Large Text (above 18pt) WCAG AAA × Fail

Any Text WCAG AAA × Fail

Black Background



This preview shows how the XYZ color 51.1194, 50.7492, 54.6782 looks on a black background.

Color Contrast Check

Large Text (above 18pt) WCAG AA ✓ Pass

Any Text WCAG AA ✓ Pass

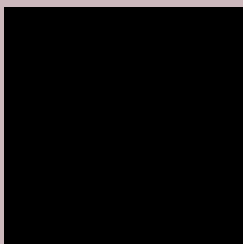
Large Text (above 18pt) WCAG AAA ✓ Pass

Any Text WCAG AAA ✓ Pass

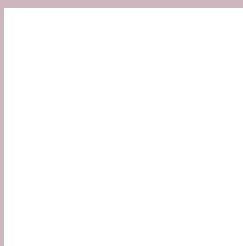
If you want to check with other color combinations, try the [Color Contrast Checker](#).

XYZ 51.1194, 50.7492, 54.6782

Background



This preview shows how black text looks on a background with the XYZ color 51.1194, 50.7492, 54.6782.



This preview shows how white text looks on a background with the XYZ color 51.1194, 50.7492,

Color Blindness Simulation

Color vision deficiency is a very complex topic, and I could not describe the different causes any better than Wikipedia does, so if you want to learn more, you should check out their [article about color blindness](#).

Dichromacy



Original Color

51.1194, 50.7492, 54.6782

Protanopia

49.0157, 50.8906, 55.9547

Deuteranopia

51.7427, 50.7632, 54.6481



Tritanopia

52.1884, 50.8773, 59.8930

Trichromacy



Original Color

51.1194, 50.7492, 54.6782

Protanomaly

49.7206, 50.9505, 55.3580

Deuteranomaly

51.4642, 50.6196, 54.6351

Tritanomaly

51.8479, 50.7412, 58.1003

Monochromacy



Original Color

51.1194, 50.7492, 54.6782

Achromatopsia

48.9429, 51.4918, 56.0745

Achromatomaly

49.6742, 51.2427, 55.4168

CSS Examples

Text

The CSS property to change the color of the text to XYZ 51.1194, 50.7492, 54.6782 is called "color". The color property can be set on classes, ids or directly on the HTML element.

This example shows how text in the color `rgb(204, 184, 188)` looks like.

```
.text, #text, p{  
    color:rgb(204, 184, 188)  
}
```

If you want to add a text shadow in that color use the text-shadow property, you can generate a text shadow directly with our [CSS Text Shadow Generator](#).

Here you see how black text with a 4 pixel rgb(204, 184, 188) colored shadow looks like.

```
.shadow{ text-shadow: 4px 4px 2px rgb(204, 184, 188) }
```

Border

The CSS property to change the border of an element to XYZ 51.1194, 50.7492, 54.6782 is called "border". The border property can be set on classes, ids or directly on the HTML element.

This example shows the color as border, it can be applied via the CSS property "border" or "border-color".

```
.border, #border, table{ border:4px solid rgb(204, 184, 188) }
```


If only the border color should be changed use the property `border-color`.

```
.border{ border-color:rgb(204, 184, 188) }
```

If you want to add a box shadow in that color use:

Here you see how a box with a 4 pixel `rgb(204, 184, 188)` colored shadow looks like.

```
.boxshadow{ -moz-box-shadow:4px 4px 4px  
4px rgb(204, 184, 188); -webkit-box-  
shadow:4px 4px 4px 4px rgb(204, 184, 188);  
box-shadow:4px 4px 4px 4px rgb(204, 184,  
188) }
```

Background

The CSS property to change the background color of an element to XYZ 51.1194, 50.7492, 54.6782 is called "background". The background property can be set on classes, ids or directly on the HTML element.

```
.background, #background, body{  
background: rgb(204, 184, 188) }
```

If only the background color should be changed can be used:

```
.background{ background-color: rgb(204,  
184, 188) }
```

This example shows the color as background, it is applied via the CSS property "background".

To optimize and compress your CSS code, you can use our [online CSS compressor and optimizer](#) based on csstidy. If you want to create a linear or radial gradient as background or border, check our [CSS Gradient Generator](#).

Hey! You found this booklet interesting? Support Converting Colors with the new Membership Option!

The pro membership hides all ads, plus gives you double the colors in the color bucket, and more awesome pro features!

[Learn more, Memberships starting at \\$2.50/m!](#)

**Follow me
on Twitter!**

@ConvertingColor