

Converting Colors

XYZ(51.1156, 50.9134, 46.5605)

Have a look what the booklet for
XYZ(51.1156, 50.9134, 46.5605)
contains.

XYZ(51.2617, 50.9997, 46.6773)	3
<i>Conversions</i>	4
<i>Details</i>	6
<i>Harmonies</i>	12
<i>Previews</i>	24
<i>Color Blindness Simulation</i>	28
<i>CSS Examples</i>	31

Color

**XYZ(51.2617, 50.9997,
46.6773)**

Conversions

Conversions Part 1

Format	Color
Hex	D2B8AD
RGB	210, 184, 173
RGB Percent	82%, 72%, 68%
CMY	0.1765, 0.2784, 0.3216
CMYK	0.00, 0.12, 0.18, 0.18
HSL	18°, 29%, 75%
HSV	18°, 18%, 82%
XYZ	51.2617, 50.9997, 46.6773
YIQ	190.5200, 19.0270, 2.0910

Conversions

Conversions Part 2

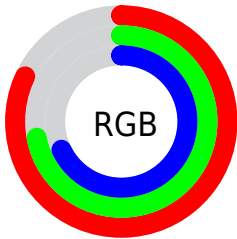
Format	Color
R _Y B	210, 189, 173
Decimal	13809837
CIE Lab	76.68, 7.52, 8.99
CIE LCh	77, 11.716, 50.093
Yxy	50.9997, 0.3442, 0.3424
Android (android.graphics.Color)	4291999917 (0xFFD2B8AD)
YUV	190.5200, -8.6374, 17.0840
Hunter-Lab	71.4141, 3.1544, 11.2370

Details

The XYZ color **51.2617, 50.9997, 46.6773** is a light color, and the websafe version is hex **CCCCCC**. A complement of this color would be **49.2897, 54.3832, 68.8726**, and the grayscale version is **49.2852, 51.8519, 56.4667**.

A 20% lighter version of the original color is **86.4037, 89.1816, 86.0586**, and **25.0851, 24.5816, 21.5118** is the 20% darker color. If you saturate the color by 10%, you get **46.4808, 44.4379, 35.8339**, and if you desaturate by 10%, it is **56.6845, 58.3332, 59.3116**.

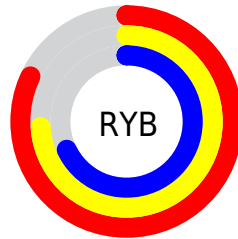
Distribution



Red (82%)

Green (72%)

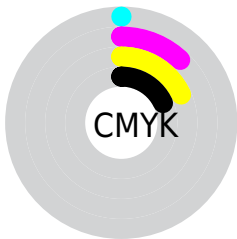
Blue (68%)



Red (82%)

Yellow (74%)

Blue (68%)

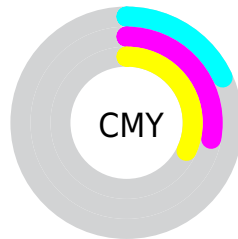


Cyan (0%)

Magenta (12%)

Yellow (18%)

Black (18%)



Cyan (18%)

Magenta (28%)

Yellow (32%)

Brightness & Saturation Gradients

These gradients show how the XYZ color 51.2617, 50.9997, 46.6773 changes by changing the brightness by 10 percent. The first figure shows a shift by +10% for each color and the second figure -10%.

Similar to the brightness gradients but the following saturation gradients show a change of the XYZ color 51.2617, 50.9997, 46.6773 by changing the saturation by 10% instead.

■ 51.2617, 50.9997,
46.6773

■ 51.2617, 50.9997,
46.6773

381.9506,
390.5626, 389.8814

■ 36.6388, 36.2084,
32.4281

■ 91.2222, 91.6543,
86.5767

■ 25.1004, 24.5952,
21.4212

117.2905,
118.2864, 113.0639

■ 16.2810, 15.7757,
13.2380

147.9046,
149.6342, 144.4676

■ 9.8153, 9.3656,
7.4600

183.4300,
186.0821, 181.2062

■ 5.3380, 4.9804,
3.6686

224.2319,
228.0145, 223.6984

■ 2.4837, 2.2358,
1.4454

270.6758,

■ 0.8870, 0.7394,

275.8158, 272.3626

0.1767

323.1269,
329.8704, 327.6174

■ 0.0000, 0.0000,
0.0000

■ 51.2617, 50.9997,
46.6773

■ 51.2617, 50.9997,
46.6773

■ 46.4808, 44.4379,
35.8339

■ 56.6845, 58.3332,
59.3116

■ 42.3130, 38.6156,
26.6966

■ 62.7684, 66.4558,
73.8100

■ 38.7334, 33.5081,
19.1784

■ 69.5367, 75.3930,
90.2455

■ 35.7137, 29.0868,
13.1834

■ 76.6863, 85.0372,
106.9798

■ 33.2229, 25.3210,
8.6054

■ 80.3886, 92.4418,
108.2139

■ 31.2270, 22.1776,
5.3243

■ 29.6869, 19.6200,
3.1997

■ 28.5523, 17.6053,
2.0369

■ 28.3260, 17.1966,
1.8263

Harmonies

Analogous

The Analogous color harmony consists of three colors that are next to each other on the color wheel.



52.5905, 50.9997, 51.4385



51.2617, 50.9997, 46.6773



49.2112, 50.9997, 44.3455

Triad

The Triadic color harmony groups three colors that are evenly spaced from another and form a triangle on the color wheel.



51.2617, 50.9997, 46.6773



44.3924, 50.9997, 53.4549



49.9537, 50.9997, 67.8094

Complementary

The Complementary color scheme is a pair of colors which are on the opposite of each other on the color wheel.



51.2617, 50.9997, 46.6773



49.2897, 54.3832, 68.8726

Split Complementary

Split-complementary colors differ from the complementary color scheme. The scheme consists of three colors, the original color and two neighbors of the complement color.



47.7436, 50.9997, 68.4527



51.2617, 50.9997, 46.6773



44.5775, 50.9997, 59.8330

Square

The Square scheme is like the rectangle color scheme, but the four colors are evenly spaced on the color wheel.



51.2617, 50.9997, 46.6773



45.2751, 50.9997, 48.0565



45.7886, 50.9997, 65.4367



51.8195, 50.9997, 63.7407

Rectangle

The Rectangle color scheme consists of four colors that form a rectangle on the color wheel.



51.2617, 50.9997, 46.6773



47.7301, 50.9997, 44.3515



45.7886, 50.9997, 65.4367



49.2250, 50.9997, 68.4448

Sweetspot

The Sweet Spot groups the original color and five complimentary colors.



51.2631, 51.0020, 46.6784



90.2731, 93.6228, 97.5145



51.8915, 47.7371, 60.8277



19.1830, 19.8527, 20.5425



0.0000, 0.0000, 0.0000



20.3446, 21.4041, 23.3091

Same Dimension

The Same Dimension uses a secret algorithm to generate beautiful new colors.



51.2631, 51.0020, 46.6784



76.7454, 75.3178, 66.0292



55.2384, 58.9527, 48.0035



12.0912, 12.3731, 12.3630



17.3552, 10.6434, 1.1397



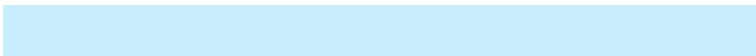
1.0396, 0.7335, 0.0868

Inverse Universe

The Inverse Universe completely reimagines the original color for something new.



49.2897, 54.3832, 68.8726



73.1468, 81.4765, 106.4790



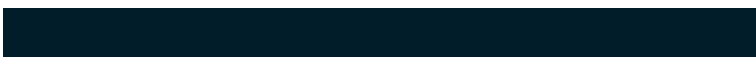
45.3944, 46.5926, 67.5741



11.8492, 12.7886, 15.0876



13.6036, 15.8537, 39.5356



0.8280, 1.0212, 2.2330

Previews

White Background



This preview shows how the XYZ color 51.2617, 50.9997, 46.6773 looks on a white background.

Color Contrast Check

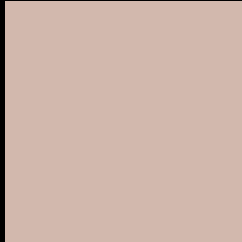
Large Text (above 18pt) WCAG AA × Fail

Any Text WCAG AA × Fail

Large Text (above 18pt) WCAG AAA × Fail

Any Text WCAG AAA × Fail

Black Background



This preview shows how the XYZ color 51.2617, 50.9997, 46.6773 looks on a black background.

Color Contrast Check

Large Text (above 18pt) WCAG AA ✓ Pass

Any Text WCAG AA ✓ Pass

Large Text (above 18pt) WCAG AAA ✓ Pass

Any Text WCAG AAA ✓ Pass

If you want to check with other color combinations, try the [Color Contrast Checker](#).

XYZ 51.2617, 50.9997, 46.6773

Background



This preview shows how black text looks on a background with the XYZ color 51.2617, 50.9997, 46.6773.



This preview shows how white text looks on a background with the XYZ color 51.2617, 50.9997,

Color Blindness Simulation

Color vision deficiency is a very complex topic, and I could not describe the different causes any better than Wikipedia does, so if you want to learn more, you should check out their [article about color blindness](#).

Dichromacy



Original Color

51.2617, 50.9997, 46.6773

Protanopia

48.7004, 51.2261, 47.8783

Deuteranopia

52.2079, 51.1802, 46.6623



Tritanopia

53.8148, 51.1340, 58.6633

Trichromacy



Original Color

51.2617, 50.9997, 46.6773

Protanomaly

49.4977, 51.0141, 47.2823

Deuteranomaly

51.9169, 51.0302, 46.6487

Tritanomaly

52.8490, 51.0408, 54.0801

Monochromacy



Original Color

51.2617, 50.9997, 46.6773

Achromatopsia

49.5206, 52.0996, 56.7364

Achromatomaly

49.9237, 51.4329, 52.6437

CSS Examples

Text

The CSS property to change the color of the text to XYZ 51.2617, 50.9997, 46.6773 is called "color". The color property can be set on classes, ids or directly on the HTML element.

This example shows how text in the color rgb(210, 184, 173) looks like.

```
.text, #text, p{  
    color:rgb(210, 184, 173)  
}
```

If you want to add a text shadow in that color use the text-shadow property, you can generate a text shadow directly with our [CSS Text Shadow Generator](#).

Here you see how black text with a 4 pixel rgb(210, 184, 173) colored shadow looks like.

```
.shadow{ text-shadow: 4px 4px 2px rgb(210, 184, 173) }
```

Border

The CSS property to change the border of an element to XYZ 51.2617, 50.9997, 46.6773 is called "border". The border property can be set on classes, ids or directly on the HTML element.

This example shows the color as border, it can be applied via the CSS property "border" or "border-color".

```
.border, #border, table{ border:4px solid rgb(210, 184, 173) }
```


If only the border color should be changed use the property `border-color`.

```
.border{ border-color:rgb(210, 184, 173) }
```

If you want to add a box shadow in that color use:

Here you see how a box with a 4 pixel `rgb(210, 184, 173)` colored shadow looks like.

```
.boxshadow{ -moz-box-shadow:4px 4px 4px  
4px rgb(210, 184, 173); -webkit-box-  
shadow:4px 4px 4px 4px rgb(210, 184, 173);  
box-shadow:4px 4px 4px 4px rgb(210, 184,  
173) }
```

Background

The CSS property to change the background color of an element to XYZ 51.2617, 50.9997, 46.6773 is called "background". The background property can be set on classes, ids or directly on the HTML element.

```
.background, #background, body{  
background: rgb(210, 184, 173) }
```

If only the background color should be changed can be used:

```
.background{ background-color: rgb(210,  
184, 173) }
```

This example shows the color as background, it is applied via the CSS property "background".

To optimize and compress your CSS code, you can use our [online CSS compressor and optimizer](#) based on csstidy. If you want to create a linear or radial gradient as background or border, check our [CSS Gradient Generator](#).

Hey! You found this booklet interesting? Support Converting Colors with the new Membership Option!

The pro membership hides all ads, plus gives you double the colors in the color bucket, and more awesome pro features!

[Learn more, Memberships starting at \\$2.50/m!](#)

**Follow me
on Twitter!**

@ConvertingColor