

Converting Colors

XYZ(51.2014, 49.8890, 53.1676)

Have a look what the booklet for
XYZ(51.2014, 49.8890, 53.1676)
contains.

XYZ(51.1189, 49.8583, 53.3837)	3
<i>Conversions</i>	4
<i>Details</i>	6
<i>Harmonies</i>	12
<i>Previews</i>	24
<i>Color Blindness Simulation</i>	28
<i>CSS Examples</i>	31

Color

**XYZ(51.1189, 49.8583,
53.3837)**

Conversions

Conversions Part 1

Format	Color
Hex	CFB5BA
RGB	207, 181, 186
RGB Percent	81%, 71%, 73%
CMY	0.1882, 0.2902, 0.2706
CMYK	0.00, 0.13, 0.10, 0.19
HSL	348°, 21%, 76%
HSV	348°, 13%, 81%
XYZ	51.1189, 49.8583, 53.3837
YIQ	189.3440, 13.8910, 7.0670

Conversions

Conversions Part 2

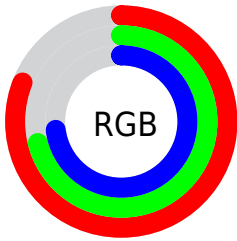
Format	Color
R _Y B	207, 181, 186
Decimal	13612474
CIE Lab	75.98, 10.14, 0.88
CIE LCh	76, 10.179, 4.986
Yxy	49.8583, 0.3312, 0.3230
Android (android.graphics.Color)	4291802554 (0xFFCFB5BA)
YUV	189.3440, -1.6486, 15.4843
Hunter-Lab	70.6104, 5.6581, 4.6022

Details

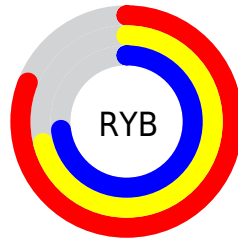
The XYZ color **51.1189, 49.8583, 53.3837** is a light color, and the websafe version is hex **CCCCCC**. A complement of this color would be **52.0315, 58.7149, 64.4707**, and the grayscale version is **48.5714, 51.1009, 55.6489**.

A 20% lighter version of the original color is **87.5512, 88.2392, 96.4218**, and **24.9017, 23.8072, 25.4731** is the 20% darker color. If you saturate the color by 10%, you get **45.5438, 41.3881, 43.2621**, and if you desaturate by 10%, it is **57.5302, 59.6669, 64.8116**.

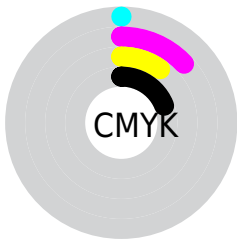
Distribution



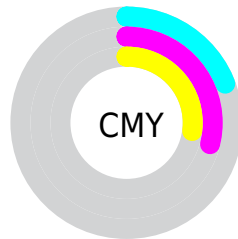
- Red (81%)
- Green (71%)
- Blue (73%)



- Red (81%)
- Yellow (71%)
- Blue (73%)



- Cyan (0%)
- Magenta (13%)
- Yellow (10%)
- Black (19%)





- Cyan (19%)
- Magenta (29%)
- Yellow (27%)

Brightness & Saturation Gradients


These gradients show how the XYZ color 51.1189, 49.8583, 53.3837 changes by changing the brightness by 10 percent. The first figure shows a shift by +10% for each color and the second figure -10%.

Similar to the brightness gradients but the following saturation gradients show a change of the XYZ color 51.1189, 49.8583, 53.3837 by changing the saturation by 10% instead.

 51.1189, 49.8583,
53.3837

 51.1189, 49.8583,
53.3837


381.4056,
386.1116, 416.8635

 36.5247, 35.3008,
37.7193

 91.0124, 89.9649,
96.6160

 25.0117, 23.8947,
25.4648


117.0425,
116.2828, 125.0210

 16.2145, 15.2555,
16.2015


147.6151,
147.2896, 158.5100

 9.7679, 8.9989,
9.5110

183.0958,
183.3698, 197.5015

 5.3064, 4.7405,
4.9746

223.8498,
224.9077, 242.4141

 2.4647, 2.0958,
2.1739

270.2426,

 0.8775, 0.6623,

272.2876, 293.6662

0.6592

322.6394,
325.8941, 351.6765

■ 0.0000, 0.0000,
0.0000

■ 51.1189, 49.8583,
53.3837

■ 51.1189, 49.8583,
53.3837

■ 45.5438, 41.3881,
43.2621

■ 57.5302, 59.6669,
64.8116

■ 40.7661, 34.1917,
34.3970

■ 64.8062, 70.8615,
77.5870

■ 36.7502, 28.2094,
26.7396

■ 72.9789, 83.4955,
91.7534

■ 33.4559, 23.3739,
20.2372

■ 79.2041, 91.8702,
106.3931

■ 30.8395, 19.6113,
14.8327

■ 79.5424, 92.0055,
108.1743

■ 28.8523, 16.8391,
10.4644

■ 27.4390, 14.9626,
7.0639

■ 26.5339, 13.8687,
4.5542

■ 26.1117, 13.4173,
3.2019

Harmonies

Analogous

The Analogous color harmony consists of three colors that are next to each other on the color wheel.



50.7741, 49.8583, 58.8284



51.1189, 49.8583, 53.3837



50.4427, 49.8583, 48.5112

Triad

The Triadic color harmony groups three colors that are evenly spaced from another and form a triangle on the color wheel.



51.1189, 49.8583, 53.3837



45.3266, 49.8583, 46.1652



45.8621, 49.8583, 64.3220

Complementary

The Complementary color scheme is a pair of colors which are on the opposite of each other on the color wheel.



51.1189, 49.8583, 53.3837



52.0315, 58.7149, 64.4707

Split Complementary

Split-complementary colors differ from the complementary color scheme. The scheme consists of three colors, the original color and two neighbors of the complement color.



44.4608, 49.8583, 60.5044



51.1189, 49.8583, 53.3837



44.1574, 49.8583, 49.9859

Square

The Square scheme is like the rectangle color scheme, but the four colors are evenly spaced on the color wheel.



51.1189, 49.8583, 53.3837



47.0723, 49.8583, 44.5249



43.8448, 49.8583, 55.2009



47.7068, 49.8583, 65.3814

Rectangle

The Rectangle color scheme consists of four colors that form a rectangle on the color wheel.



51.1189, 49.8583, 53.3837



49.5142, 49.8583, 46.1678



43.8448, 49.8583, 55.2009



45.3252, 49.8583, 63.3068

Sweetspot

The Sweet Spot groups the original color and five complimentary colors.



51.1203, 49.8605, 53.3848



90.5835, 93.1445, 101.0064



52.0910, 50.0837, 65.9537



19.2142, 19.6695, 21.3102



0.0000, 0.0000, 0.0000



20.3446, 21.4041, 23.3091

Same Dimension

The Same Dimension uses a secret algorithm to generate beautiful new colors.



51.1203, 49.8605, 53.3848



79.4568, 76.1442, 81.1026



52.2288, 52.9127, 51.1792



11.9003, 11.8448, 12.7506



16.4778, 8.4640, 2.1565



0.9495, 0.4845, 0.2687

Inverse Universe

The Inverse Universe completely reimagines the original color for something new.



51.1203, 49.8605, 53.3848



79.4568, 76.1442, 81.1026



50.7898, 55.2693, 67.0232



11.9003, 11.8448, 12.7506



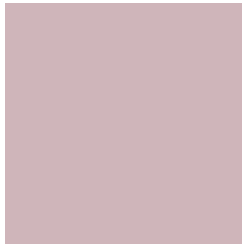
16.4778, 8.4640, 2.1565



0.9495, 0.4845, 0.2687

Previews

White Background



This preview shows how the XYZ color 51.1189, 49.8583, 53.3837 looks on a white background.

Color Contrast Check

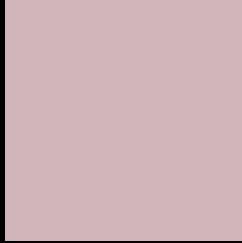
Large Text (above 18pt) WCAG AA × Fail

Any Text WCAG AA × Fail

Large Text (above 18pt) WCAG AAA × Fail

Any Text WCAG AAA × Fail

Black Background



This preview shows how the XYZ color 51.1189, 49.8583, 53.3837 looks on a black background.

Color Contrast Check

Large Text (above 18pt) WCAG AA ✓ Pass

Any Text WCAG AA ✓ Pass

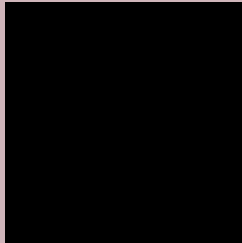
Large Text (above 18pt) WCAG AAA ✓ Pass

Any Text WCAG AAA ✓ Pass

If you want to check with other color combinations, try the [Color Contrast Checker](#).

XYZ 51.1189, 49.8583, 53.3837

Background



This preview shows how black text looks on a background with the XYZ color 51.1189, 49.8583, 53.3837.



This preview shows how white text looks on a background with the XYZ color 51.1189, 49.8583,

Color Blindness Simulation

Color vision deficiency is a very complex topic, and I could not describe the different causes any better than Wikipedia does, so if you want to learn more, you should check out their [article about color blindness](#).

Dichromacy



Original Color

51.1189, 49.8583, 53.3837

Protanopia

47.9794, 49.7391, 55.2159

Deuteranopia

50.8404, 49.7147, 53.3707



Tritanopia

52.0713, 49.9475, 57.9353

Trichromacy



Original Color

51.1189, 49.8583, 53.3837

Protanomaly

48.9825, 49.6476, 54.5782

Deuteranomaly

50.8404, 49.7147, 53.3707

Tritanomaly

51.7377, 49.8140, 56.1784

Monochromacy



Original Color

51.1189, 49.8583, 53.3837

Achromatopsia

48.3692, 50.8881, 55.4172

Achromatomaly

49.4010, 50.4844, 54.7177

CSS Examples

Text

The CSS property to change the color of the text to XYZ 51.1189, 49.8583, 53.3837 is called "color". The color property can be set on classes, ids or directly on the HTML element.

This example shows how text in the color `rgb(207, 181, 186)` looks like.

```
.text, #text, p{  
    color:rgb(207, 181, 186)  
}
```

If you want to add a text shadow in that color use the text-shadow property, you can generate a text shadow directly with our [CSS Text Shadow Generator](#).

Here you see how black text with a 4 pixel rgb(207, 181, 186) colored shadow looks like.

```
.shadow{ text-shadow: 4px 4px 2px rgb(207, 181, 186) }
```

Border

The CSS property to change the border of an element to XYZ 51.1189, 49.8583, 53.3837 is called "border". The border property can be set on classes, ids or directly on the HTML element.

This example shows the color as border, it can be applied via the CSS property "border" or "border-color".

```
.border, #border, table{ border:4px solid rgb(207, 181, 186) }
```


If only the border color should be changed use the property `border-color`.

```
.border{ border-color:rgb(207, 181, 186) }
```

If you want to add a box shadow in that color use:

Here you see how a box with a 4 pixel `rgb(207, 181, 186)` colored shadow looks like.

```
.boxshadow{ -moz-box-shadow:4px 4px 4px  
4px rgb(207, 181, 186); -webkit-box-  
shadow:4px 4px 4px 4px rgb(207, 181, 186);  
box-shadow:4px 4px 4px 4px rgb(207, 181,  
186) }
```

Background

The CSS property to change the background color of an element to XYZ 51.1189, 49.8583, 53.3837 is called "background". The background property can be set on classes, ids or directly on the HTML element.

```
.background, #background, body{  
background: rgb(207, 181, 186) }
```

If only the background color should be changed can be used:

```
.background{ background-color: rgb(207,  
181, 186) }
```

This example shows the color as background, it is applied via the CSS property "background".

To optimize and compress your CSS code, you can use our [online CSS compressor and optimizer](#) based on csstidy. If you want to create a linear or radial gradient as background or border, check our [CSS Gradient Generator](#).

Hey! You found this booklet interesting? Support Converting Colors with the new Membership Option!

The pro membership hides all ads, plus gives you double the colors in the color bucket, and more awesome pro features!

[Learn more, Memberships starting at \\$2.50/m!](#)

**Follow me
on Twitter!**

@ConvertingColor