

# Converting Colors

XYZ(51.2043, 49.3455, 28.3494)

Have a look what the booklet for  
XYZ(51.2043, 49.3455, 28.3494)  
contains.

<b>XYZ(51.1829, 49.2517, 28.2816)</b> .....	3
<b><i>Conversions</i></b> .....	4
<b><i>Details</i></b> .....	6
<b><i>Harmonies</i></b> .....	12
<b><i>Previews</i></b> .....	24
<b><i>Color Blindness Simulation</i></b> .....	28
<b><i>CSS Examples</i></b> .....	31

# Color

**XYZ(51.1829, 49.2517,  
28.2816)**

# Conversions

## Conversions Part 1

Format	Color
Hex	E2B183
RGB	226, 177, 131
RGB Percent	89%, 69%, 51%
CMY	0.1137, 0.3059, 0.4863
CMYK	0.00, 0.22, 0.42, 0.11
HSL	29°, 62%, 70%
HSV	29°, 42%, 89%
XYZ	51.1829, 49.2517, 28.2816
YIQ	186.4070, 43.9700, -3.9180

# Conversions

## Conversions Part 2

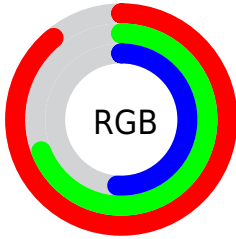
<b>Format</b>	<b>Color</b>
<b>R<sub>YB</sub></b>	226, 220, 131
Decimal	14856579
CIE <sub>Lab</sub>	75.61, 11.92, 30.34
CIE <sub>LCh</sub>	76, 32.596, 68.541
Yxy	49.2517, 0.3976, 0.3826
Android (android.graphics.Color)	4293046659 (0xFFE2B183)
YUV	186.4070, -27.3157, 34.7231
Hunter-Lab	70.1796, 7.3682, 25.2325

# Details

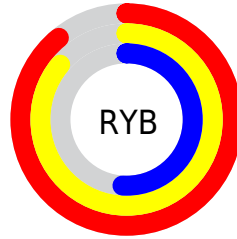
The XYZ color **51.1829, 49.2517, 28.2816** is a light color, and the websafe version is hex **CC9966**. A complement of this color would be **39.4082, 42.9572, 78.1660**, and the grayscale version is **47.0327, 49.4821, 53.8860**.

A 20% lighter version of the original color is **79.0306, 82.9985, 57.2024**, and **25.0550, 23.4444, 10.9893** is the 20% darker color. If you saturate the color by 10%, you get **47.6106, 44.2968, 20.3405**, and if you desaturate by 10%, it is **55.2885, 54.7383, 38.0497**.

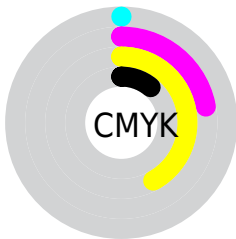
# Distribution



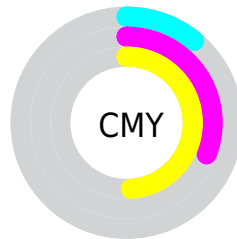
- Red (89%)
- Green (69%)
- Blue (51%)



- Red (89%)
- Yellow (86%)
- Blue (51%)



- Cyan (0%)
- Magenta (22%)
- Yellow (42%)
- Black (11%)




- Cyan (11%)
- Magenta (31%)
- Yellow (49%)


# Brightness & Saturation Gradients

These gradients show how the XYZ color 51.1829, 49.2517, 28.2816 changes by changing the brightness by 10 percent. The first figure shows a shift by +10% for each color and the second figure -10%.


Similar to the brightness gradients but the following saturation gradients show a change of the XYZ color 51.1829, 49.2517, 28.2816 by changing the saturation by 10% instead.





 51.1829, 49.2517,  
28.2816


 51.1829, 49.2517,  
28.2816


381.6499,  
383.7324, 307.7642


 36.5758, 34.8192,  
18.2972


 91.1065, 89.0652,  
57.9622

 25.0514, 23.5236,  
10.9919


 117.1536,  
115.2149, 78.4955

 16.2443, 14.9806,  
5.9473


 147.7449,  
146.0392, 103.3821

 9.7891, 8.8058,  
2.7448

183.2456,  
181.9224, 133.0406

 5.3206, 4.6147,  
0.9658

224.0211,  
223.2489, 167.8895

 2.4732, 2.0230,  
0.0000

270.4368,

 0.8818, 0.6208,

270.4032, 208.3474

0.0000

322.8579,  
323.7695, 254.8328

■ 0.0000, 0.0000,  
0.0000

■ 51.1829, 49.2517,  
28.2816

■ 51.1829, 49.2517,  
28.2816

■ 47.6106, 44.2968,  
20.3405

■ 55.2885, 54.7383,  
38.0497

■ 44.5410, 39.8479,  
14.1061

■ 59.9482, 60.7669,  
49.7485

■ 41.9456, 35.8874,  
9.4484

■ 65.1864, 67.3564,  
63.4775

■ 39.7910, 32.3935,  
6.2169

■ 71.0246, 74.5224,  
79.3283

■ 38.0376, 29.3413,  
4.2310

■ 77.4831, 82.2799,  
97.3870

■ 36.8801, 27.2009,  
3.3065

■ 82.6563, 89.8734,  
107.5986

■ 85.1740, 94.9087,  
108.4378

# Harmonies

## Analogous

The Analogous color harmony consists of three colors that are next to each other on the color wheel.



56.4781, 49.2517, 35.4858



51.1829, 49.2517, 28.2816



45.1116, 49.2517, 27.0382

# Triad

The Triadic color harmony groups three colors that are evenly spaced from another and form a triangle on the color wheel.



51.1829, 49.2517, 28.2816



36.2582, 49.2517, 58.7101



54.4134, 49.2517, 84.0136

# Complementary

The Complementary color scheme is a pair of colors which are on the opposite of each other on the color wheel.



51.1829, 49.2517, 28.2816



39.4082, 42.9572, 78.1660

# Split Complementary

Split-complementary colors differ from the complementary color scheme. The scheme consists of three colors, the original color and two neighbors of the complement color.



48.5551, 49.2517, 93.6171



51.1829, 49.2517, 28.2816



38.3174, 49.2517, 77.0878

# Square

The Square scheme is like the rectangle color scheme, but the four colors are evenly spaced on the color wheel.



51.1829, 49.2517, 28.2816



36.8305, 49.2517, 42.3741



42.6978, 49.2517, 90.8418



58.4518, 49.2517, 66.7135



# Rectangle

The Rectangle color scheme consists of four colors that form a rectangle on the color wheel.



51.1829, 49.2517, 28.2816



41.4889, 49.2517, 29.4280



42.6978, 49.2517, 90.8418



52.5725, 49.2517, 88.4013

# Sweetspot

The Sweet Spot groups the original color and five complimentary colors.



51.1841, 49.2540, 28.2826



84.9511, 87.6187, 81.4366



47.7273, 35.7005, 47.6003



17.8450, 18.3318, 16.5354



0.0000, 0.0000, 0.0000



20.3446, 21.4041, 23.3091



# Same Dimension

The Same Dimension uses a secret algorithm to generate beautiful new colors.



51.1841, 49.2540, 28.2826



63.3535, 59.3054, 28.3580



62.2286, 71.3430, 31.9641



14.2523, 14.7906, 14.4105



21.1579, 15.7538, 1.9256



1.5559, 1.2707, 0.1633

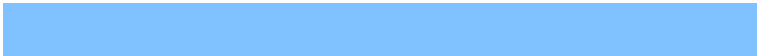


# Inverse Universe

The Inverse Universe completely reimagines the original color for something new.



39.4082, 42.9572, 78.1660



46.0038, 50.0239, 101.8387



31.4186, 26.9780, 75.5028



13.5338, 14.4066, 17.4551



11.5508, 10.5711, 42.4800

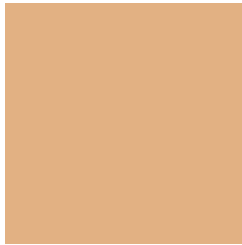


0.8902, 0.9119, 2.9743



# Previews

## White Background



This preview shows how the XYZ color 51.1829, 49.2517, 28.2816 looks on a white background.

## Color Contrast Check

Large Text (above 18pt) WCAG AA × Fail

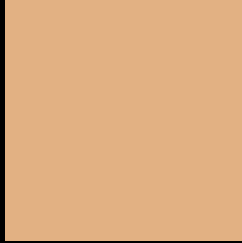
Any Text WCAG AA × Fail

Large Text (above 18pt) WCAG AAA × Fail

Any Text WCAG AAA × Fail



# Black Background



This preview shows how the XYZ color 51.1829, 49.2517, 28.2816 looks on a black background.

## Color Contrast Check

Large Text (above 18pt) WCAG AA ✓ Pass

Any Text WCAG AA ✓ Pass

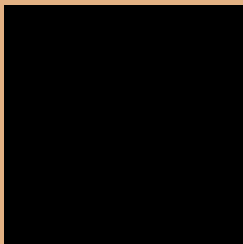
Large Text (above 18pt) WCAG AAA ✓ Pass

Any Text WCAG AAA ✓ Pass

If you want to check with other color combinations, try the [Color Contrast Checker](#).

**XYZ 51.1829, 49.2517, 28.2816**

## **Background**



This preview shows how black text looks on a background with the XYZ color 51.1829, 49.2517, 28.2816.



This preview shows how white text looks on a background with the XYZ color 51.1829, 49.2517,



# Color Blindness Simulation

Color vision deficiency is a very complex topic, and I could not describe the different causes any better than Wikipedia does, so if you want to learn more, you should check out their [article about color blindness](#).

## Dichromacy



### Original Color

51.1829, 49.2517, 28.2816

### Protanopia

46.0195, 49.2846, 30.0091

### Deuteranopia

50.3410, 49.4085, 28.3563



## Tritanopia

55.8770, 49.1573, 51.3430

# Trichromacy



## Original Color

51.1829, 49.2517, 28.2816

## Protanomaly

47.8149, 49.2898, 29.5480

## Deuteranomaly

50.4486, 49.1675, 28.3041

## Tritanomaly

53.9575, 49.2255, 41.7796

# Monochromacy



## Original Color

51.1829, 49.2517, 28.2816

## Achromatopsia

46.6715, 49.1021, 53.4722

## Achromatomaly

47.9038, 49.0377, 43.0168

# CSS Examples

## Text

The CSS property to change the color of the text to XYZ 51.1829, 49.2517, 28.2816 is called "color". The color property can be set on classes, ids or directly on the HTML element.

This example shows how text in the color `rgb(226, 177, 131)` looks like.

```
.text, #text, p{  
    color:rgb(226, 177, 131)  
}
```

If you want to add a text shadow in that color use the text-shadow property, you can generate a text shadow directly with our [CSS Text Shadow Generator](#).

Here you see how black text with a 4 pixel rgb(226, 177, 131) colored shadow looks like.

```
.shadow{ text-shadow: 4px 4px 2px rgb(226, 177, 131) }
```

## Border

The CSS property to change the border of an element to XYZ 51.1829, 49.2517, 28.2816 is called "border". The border property can be set on classes, ids or directly on the HTML element.

This example shows the color as border, it can be applied via the CSS property "border" or "border-color".

```
.border, #border, table{ border:4px solid rgb(226, 177, 131) }
```



If only the border color should be changed use the property `border-color`.

```
.border{ border-color:rgb(226, 177, 131) }
```

If you want to add a box shadow in that color use:

Here you see how a box with a 4 pixel `rgb(226, 177, 131)` colored shadow looks like.

```
.boxshadow{ -moz-box-shadow:4px 4px 4px  
4px rgb(226, 177, 131); -webkit-box-  
shadow:4px 4px 4px 4px rgb(226, 177, 131);  
box-shadow:4px 4px 4px 4px rgb(226, 177,  
131) }
```

# Background

The CSS property to change the background color of an element to XYZ 51.1829, 49.2517, 28.2816 is called "background". The background property can be set on classes, ids or directly on the HTML element.

```
.background, #background, body{  
background: rgb(226, 177, 131) }
```

If only the background color should be changed can be used:

```
.background{ background-color: rgb(226,  
177, 131) }
```

This example shows the color as background, it is applied via the CSS property "background".

To optimize and compress your CSS code, you can use our [online CSS compressor and optimizer](#) based on csstidy. If you want to create a linear or radial gradient as background or border, check our [CSS Gradient Generator](#).

Hey! You found this booklet interesting? Support Converting Colors with the new Membership Option!

The pro membership hides all ads, plus gives you double the colors in the color bucket, and more awesome pro features!

**[Learn more, Memberships starting at \\$2.50/m!](#)**

**Follow me  
on Twitter!**

@ConvertingColor