

Converting Colors

XYZ(51.2607, 50.3065, 50.1884)

Have a look what the booklet for
XYZ(51.2607, 50.3065, 50.1884)
contains.

XYZ(51.2607, 50.3065, 50.1884)	3
<i>Conversions</i>	4
<i>Details</i>	6
<i>Harmonies</i>	12
<i>Previews</i>	24
<i>Color Blindness Simulation</i>	28
<i>CSS Examples</i>	31

Color

**XYZ(51.2607, 50.3065,
50.1884)**

Conversions

Conversions Part 1

Format	Color
Hex	D1B6B4
RGB	209, 182, 180
RGB Percent	82%, 71%, 71%
CMY	0.1804, 0.2863, 0.2941
CMYK	0.00, 0.13, 0.14, 0.18
HSL	4°, 24%, 76%
HSV	4°, 14%, 82%
XYZ	51.2607, 50.3065, 50.1884
YIQ	189.8450, 16.7340, 5.1020

Conversions

Conversions Part 2

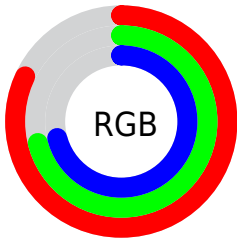
Format	Color
R_{YB}	209, 182, 180
Decimal	13743796
CIE Lab	76.26, 9.33, 4.57
CIE LCh	76, 10.391, 26.091
Yxy	50.3065, 0.3378, 0.3315
Android (android.graphics.Color)	4291933876 (0xFFD1B6B4)
YUV	189.8450, -4.8536, 16.7989
Hunter-Lab	70.9271, 4.8839, 7.6950

Details

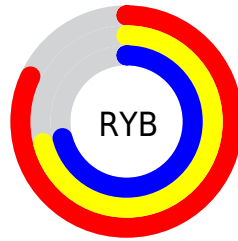
The XYZ color **51.2607, 50.3065, 50.1884** is a light color, and the websafe version is hex **CCCCCC**. A complement of this color would be **52.6436, 58.9312, 68.9225**, and the grayscale version is **48.8758, 51.4212, 55.9976**.

A 20% lighter version of the original color is **86.9549, 88.4652, 91.8494**, and **25.0074, 24.1028, 23.4130** is the 20% darker color. If you saturate the color by 10%, you get **45.5788, 42.0967, 38.5702**, and if you desaturate by 10%, it is **57.8201, 59.7564, 63.6842**.

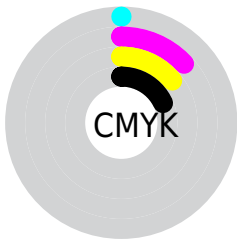
Distribution



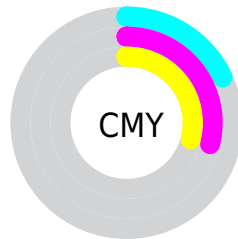
- Red (82%)
- Green (71%)
- Blue (71%)



- Red (82%)
- Yellow (71%)
- Blue (71%)



- Cyan (0%)
- Magenta (13%)
- Yellow (14%)
- Black (18%)





- Cyan (18%)
- Magenta (29%)
- Yellow (29%)

Brightness & Saturation Gradients


These gradients show how the XYZ color 51.2607, 50.3065, 50.1884 changes by changing the brightness by 10 percent. The first figure shows a shift by +10% for each color and the second figure -10%.


Similar to the brightness gradients but the following saturation gradients show a change of the XYZ color 51.2607, 50.3065, 50.1884 by changing the saturation by 10% instead.

 51.2607, 50.3065,
50.1884

 51.2607, 50.3065,
50.1884

381.9468,
387.8633, 404.1584

 36.6380, 35.6570,
35.1909


 91.2207, 90.6288,
91.8531

 25.0997, 24.1694,
23.5252


117.2888,
117.0705, 119.3574

 16.2805, 15.4593,
14.7729


147.9026,
148.2116, 151.8677

 9.8150, 9.1424,
8.5153

183.4277,
184.4366, 189.8026

 5.3378, 4.8342,
4.3339

224.2293,
226.1298, 233.5806

 2.4836, 2.1503,
1.8103

270.6727,

 0.8870, 0.6927,

273.6758, 283.6202

0.4347

323.1235,
327.4588, 340.3399

■ 0.0000, 0.0000,
0.0000

■ 51.2607, 50.3065,
50.1884

■ 51.2607, 50.3065,
50.1884

■ 45.5788, 42.0967,
38.5702

■ 57.8201, 59.7564,
63.6842

■ 40.7332, 35.0691,
28.7433

■ 65.2875, 70.4878,
79.1323

■ 36.6856, 29.1714,
20.6197

■ 73.6974, 82.5485,
96.6071

■ 33.3932, 24.3445,
14.1023

■ 80.1048, 92.2954,
108.2006

■ 30.8089, 20.5241,
9.0846

■ 28.8806, 17.6390,
5.4470

■ 27.5489, 15.6086,
3.0516

■ 26.7435, 14.3387,
1.7322

■ 26.4578, 13.8815,
1.2849

Harmonies

Analogous

The Analogous color harmony consists of three colors that are next to each other on the color wheel.



51.6527, 50.3065, 55.5102



51.2607, 50.3065, 50.1884



49.9365, 50.3065, 46.3405

Triad

The Triadic color harmony groups three colors that are evenly spaced from another and form a triangle on the color wheel.



51.2607, 50.3065, 50.1884



44.7710, 50.3065, 49.0023



47.5598, 50.3065, 66.1981

Complementary

The Complementary color scheme is a pair of colors which are on the opposite of each other on the color wheel.



51.2607, 50.3065, 50.1884



52.6436, 58.9312, 68.9225

Split Complementary

Split-complementary colors differ from the complementary color scheme. The scheme consists of three colors, the original color and two neighbors of the complement color.



45.7541, 50.3065, 64.1760



51.2607, 50.3065, 50.1884



44.1719, 50.3065, 54.0468

Square

The Square scheme is like the rectangle color scheme, but the four colors are evenly spaced on the color wheel.



51.2607, 50.3065, 50.1884



46.1852, 50.3065, 45.6890



44.5269, 50.3065, 59.6333



49.4823, 50.3065, 64.9926

Rectangle

The Rectangle color scheme consists of four colors that form a rectangle on the color wheel.



51.2607, 50.3065, 50.1884



48.7215, 50.3065, 45.0021



44.5269, 50.3065, 59.6333



46.9195, 50.3065, 65.8699

Sweetspot

The Sweet Spot groups the original color and five complimentary colors.



51.2621, 50.3087, 50.1895



90.4962, 93.4510, 99.4944



53.8870, 50.7068, 66.0221



19.1922, 19.7467, 20.9293



0.0000, 0.0000, 0.0000



20.3446, 21.4041, 23.3091

Same Dimension

The Same Dimension uses a secret algorithm to generate beautiful new colors.



51.2621, 50.3087, 50.1895



77.2898, 74.4162, 72.3463



54.3712, 56.5269, 51.2258



11.8734, 11.9375, 12.2904



16.3394, 8.6118, 0.8011



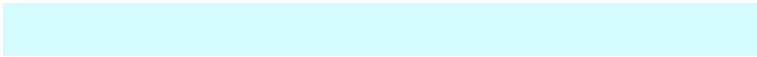
0.9371, 0.5285, 0.0526

Inverse Universe

The Inverse Universe completely reimagines the original color for something new.



52.6436, 58.9312, 68.9225



79.9125, 90.7889, 107.9199



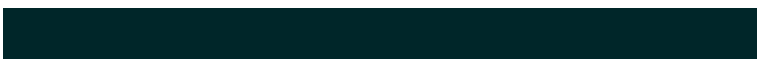
49.3060, 52.2561, 67.8099



12.0855, 13.2614, 15.1664



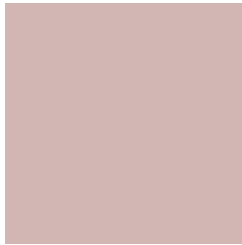
19.0973, 26.8412, 41.3668



1.0893, 1.5437, 2.3201

Previews

White Background



This preview shows how the XYZ color 51.2607, 50.3065, 50.1884 looks on a white background.

Color Contrast Check

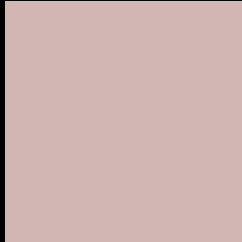
Large Text (above 18pt) WCAG AA × Fail

Any Text WCAG AA × Fail

Large Text (above 18pt) WCAG AAA × Fail

Any Text WCAG AAA × Fail

Black Background



This preview shows how the XYZ color 51.2607, 50.3065, 50.1884 looks on a black background.

Color Contrast Check

Large Text (above 18pt) WCAG AA ✓ Pass

Any Text WCAG AA ✓ Pass

Large Text (above 18pt) WCAG AAA ✓ Pass

Any Text WCAG AAA ✓ Pass

If you want to check with other color combinations, try the [Color Contrast Checker](#).

XYZ 51.2607, 50.3065, 50.1884

Background



This preview shows how black text looks on a background with the XYZ color 51.2607, 50.3065, 50.1884.



This preview shows how white text looks on a background with the XYZ color 51.2607, 50.3065,

Color Blindness Simulation

Color vision deficiency is a very complex topic, and I could not describe the different causes any better than Wikipedia does, so if you want to learn more, you should check out their [article about color blindness](#).

Dichromacy



Original Color

51.2607, 50.3065, 50.1884

Protanopia

48.3099, 50.2970, 51.9618

Deuteranopia

51.2607, 50.3065, 50.1884



Tritanopia

52.9228, 50.3864, 57.9752

Trichromacy



Original Color

51.2607, 50.3065, 50.1884

Protanomaly

49.3456, 50.2174, 51.3481

Deuteranomaly

51.2607, 50.3065, 50.1884

Tritanomaly

52.2875, 50.4235, 55.1210

Monochromacy



Original Color

51.2607, 50.3065, 50.1884

Achromatopsia

48.9429, 51.4918, 56.0745

Achromatomaly

49.6592, 50.9561, 53.6726

CSS Examples

Text

The CSS property to change the color of the text to XYZ 51.2607, 50.3065, 50.1884 is called "color". The color property can be set on classes, ids or directly on the HTML element.

This example shows how text in the color `rgb(209, 182, 180)` looks like.

```
.text, #text, p{  
    color:rgb(209, 182, 180)  
}
```

If you want to add a text shadow in that color use the text-shadow property, you can generate a text shadow directly with our [CSS Text Shadow Generator](#).

Here you see how black text with a 4 pixel rgb(209, 182, 180) colored shadow looks like.

```
.shadow{ text-shadow: 4px 4px 2px rgb(209, 182, 180) }
```

Border

The CSS property to change the border of an element to XYZ 51.2607, 50.3065, 50.1884 is called "border". The border property can be set on classes, ids or directly on the HTML element.

This example shows the color as border, it can be applied via the CSS property "border" or "border-color".

```
.border, #border, table{ border:4px solid rgb(209, 182, 180) }
```


If only the border color should be changed use the property `border-color`.

```
.border{ border-color:rgb(209, 182, 180) }
```

If you want to add a box shadow in that color use:

Here you see how a box with a 4 pixel `rgb(209, 182, 180)` colored shadow looks like.

```
.boxshadow{ -moz-box-shadow:4px 4px 4px  
4px rgb(209, 182, 180); -webkit-box-  
shadow:4px 4px 4px 4px rgb(209, 182, 180);  
box-shadow:4px 4px 4px 4px rgb(209, 182,  
180) }
```

Background

The CSS property to change the background color of an element to XYZ 51.2607, 50.3065, 50.1884 is called "background". The background property can be set on classes, ids or directly on the HTML element.

```
.background, #background, body{  
background: rgb(209, 182, 180) }
```

If only the background color should be changed can be used:

```
.background{ background-color: rgb(209,  
182, 180) }
```

This example shows the color as background, it is applied via the CSS property "background".

To optimize and compress your CSS code, you can use our [online CSS compressor and optimizer](#) based on csstidy. If you want to create a linear or radial gradient as background or border, check our [CSS Gradient Generator](#).

Hey! You found this booklet interesting? Support Converting Colors with the new Membership Option!

The pro membership hides all ads, plus gives you double the colors in the color bucket, and more awesome pro features!

[Learn more, Memberships starting at \\$2.50/m!](#)

**Follow me
on Twitter!**

@ConvertingColor