

# Converting Colors

XYZ(51.4096, 51.5032, 49.8643)

Have a look what the booklet for  
XYZ(51.4096, 51.5032, 49.8643)  
contains.

<b>XYZ(51.4277, 51.6379, 49.9044)</b> .....	3
<b><i>Conversions</i></b> .....	4
<b><i>Details</i></b> .....	6
<b><i>Harmonies</i></b> .....	12
<b><i>Previews</i></b> .....	24
<b><i>Color Blindness Simulation</i></b> .....	28
<b><i>CSS Examples</i></b> .....	31

# Color

**XYZ(51.4277, 51.6379,  
49.9044)**

# Conversions

## Conversions Part 1

Format	Color
Hex	CFBAB3
RGB	207, 186, 179
RGB Percent	81%, 73%, 70%
CMY	0.1882, 0.2706, 0.2980
CMYK	0.00, 0.10, 0.14, 0.19
HSL	15°, 23%, 76%
HSV	15°, 14%, 81%
XYZ	51.4277, 51.6379, 49.9044
YIQ	191.4810, 14.7630, 2.2750

# Conversions

## Conversions Part 2

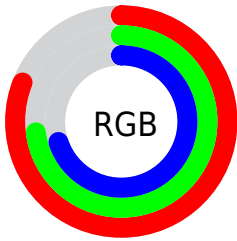
<b>Format</b>	<b>Color</b>
R <sub>Y</sub> B	207, 188, 179
Decimal	13613747
CIE Lab	77.06, 6.30, 6.25
CIE LCh	77, 8.873, 44.804
Yxy	51.6379, 0.3362, 0.3376
Android (android.graphics.Color)	4291803827 (0xFFCFBAB3)
YUV	191.4810, -6.1531, 13.6102
Hunter-Lab	71.8595, 1.9929, 9.1264

# Details

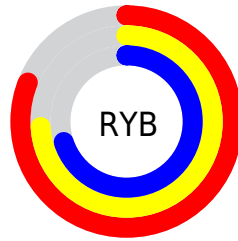
The XYZ color **51.4277, 51.6379, 49.9044** is a light color, and the websafe version is hex **CCCCCC**. A complement of this color would be **50.5068, 55.3960, 67.0624**, and the grayscale version is **49.8304, 52.4254, 57.0913**.

A 20% lighter version of the original color is **87.9875, 90.7624, 91.4787**, and **25.1023, 24.9568, 23.2328** is the 20% darker color. If you saturate the color by 10%, you get **46.3953, 44.6754, 38.6618**, and if you desaturate by 10%, it is **57.1325, 59.4412, 62.9229**.

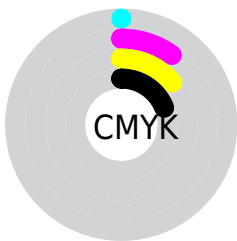
# Distribution



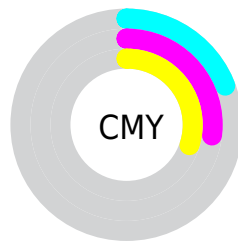
- Red (81%)
- Green (73%)
- Blue (70%)



- Red (81%)
- Yellow (74%)
- Blue (70%)



- Cyan (0%)
- Magenta (10%)
- Yellow (14%)
- Black (19%)



- Cyan (19%)
- Magenta (27%)
- Yellow (30%)

# Brightness & Saturation Gradients

These gradients show how the XYZ color 51.4277, 51.6379, 49.9044 changes by changing the brightness by 10 percent. The first figure shows a shift by +10% for each color and the second figure -10%.

Similar to the brightness gradients but the following saturation gradients show a change of the XYZ color 51.4277, 51.6379, 49.9044 by changing the saturation by 10% instead.



■ 51.4277, 51.6379,  
49.9044

■ 51.4277, 51.6379,  
49.9044

382.5836,  
393.0371, 403.0163

■ 36.7715, 36.7165,  
34.9668

■ 91.4659, 92.5970,  
91.4281

■ 25.2035, 24.9881,  
23.3539

117.5787,  
119.4035, 118.8512

■ 16.3583, 16.0682,  
14.6473

148.2410,  
150.9406, 151.2733

■ 9.8705, 9.5724,  
8.4284

183.8182,  
187.5925, 189.1128

■ 5.3748, 5.1164,  
4.2786

224.6757,  
229.7437, 232.7883

■ 2.5058, 2.3157,  
1.7794

271.1789,

■ 0.8982, 0.7820,

277.7786, 282.7184

0.4143

323.6931,  
332.0816, 339.3215

■ 0.0000, 0.0000,  
0.0000

■ 51.4277, 51.6379,  
49.9044

■ 51.4277, 51.6379,  
49.9044

■ 46.3953, 44.6754,  
38.6618

■ 57.1325, 59.4412,  
62.9229

■ 42.0058, 38.5186,  
29.1146

■ 63.5294, 68.1053,  
77.7866

■ 38.2337, 33.1401,  
21.1807

■ 70.6424, 77.6580,  
94.5649

■ 35.0501, 28.5081,  
14.7702

■ 77.3785, 87.6779,  
107.4530

■ 32.4238, 24.5889,  
9.7841

■ 79.5423, 92.0055,  
108.1743

■ 30.3203, 21.3457,  
6.1115

■ 28.7009, 18.7385,  
3.6252

■ 27.5209, 16.7222,  
2.1717

■ 26.9505, 15.7018,  
1.6103

# Harmonies

## Analogous

The Analogous color harmony consists of three colors that are next to each other on the color wheel.



52.2971, 51.6379, 53.8750



51.4277, 51.6379, 49.9044



49.9390, 51.6379, 47.6949

# Triad

The Triadic color harmony groups three colors that are evenly spaced from another and form a triangle on the color wheel.



51.4277, 51.6379, 49.9044



46.0037, 51.6379, 53.8151



49.9172, 51.6379, 65.7341

# Complementary

The Complementary color scheme is a pair of colors which are on the opposite of each other on the color wheel.



51.4277, 51.6379, 49.9044



50.5068, 55.3960, 67.0624

# Split Complementary

Split-complementary colors differ from the complementary color scheme. The scheme consists of three colors, the original color and two neighbors of the complement color.



48.2315, 51.6379, 65.7157



51.4277, 51.6379, 49.9044



45.9982, 51.6379, 58.6422

# Square

The Square scheme is like the rectangle color scheme, but the four colors are evenly spaced on the color wheel.



51.4277, 51.6379, 49.9044



46.8206, 51.6379, 49.8628



46.8054, 51.6379, 63.0577



51.4115, 51.6379, 63.1064



# Rectangle

The Rectangle color scheme consists of four colors that form a rectangle on the color wheel.



51.4277, 51.6379, 49.9044



48.8080, 51.6379, 47.4325



46.8054, 51.6379, 63.0577



49.3536, 51.6379, 66.0418

# Sweetspot

The Sweet Spot groups the original color and five complimentary colors.



51.4291, 51.6402, 49.9055



91.0592, 94.5770, 99.6821



52.2781, 49.6764, 61.4772



19.3341, 20.0305, 20.9766



0.0000, 0.0000, 0.0000



20.3446, 21.4041, 23.3091

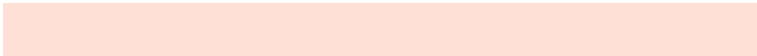


# Same Dimension

The Same Dimension uses a secret algorithm to generate beautiful new colors.



51.4291, 51.6402, 49.9055



80.1680, 79.6549, 74.9020



54.5236, 57.8292, 50.9370



12.0456, 12.2819, 12.3478



17.0439, 10.0207, 1.0359



1.0173, 0.6889, 0.0793

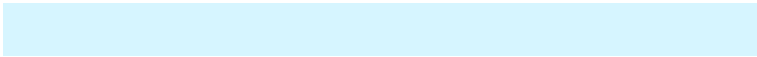


# Inverse Universe

The Inverse Universe completely reimagines the original color for something new.



50.5068, 55.3960, 67.0624



78.4302, 86.7266, 107.2139



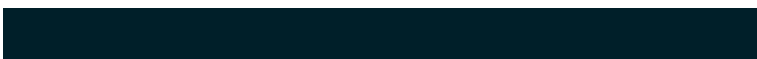
47.4124, 49.2072, 66.0309



11.8975, 12.8853, 15.1037



14.5825, 17.8116, 39.8619



0.8762, 1.1176, 2.2491



# Previews

## White Background



This preview shows how the XYZ color 51.4277, 51.6379, 49.9044 looks on a white background.

## Color Contrast Check

Large Text (above 18pt) WCAG AA × Fail

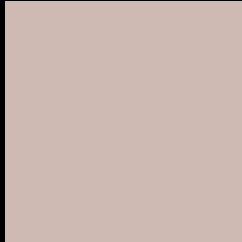
Any Text WCAG AA × Fail

Large Text (above 18pt) WCAG AAA × Fail

Any Text WCAG AAA × Fail



# Black Background



This preview shows how the XYZ color 51.4277, 51.6379, 49.9044 looks on a black background.

## Color Contrast Check

Large Text (above 18pt) WCAG AA ✓ Pass

Any Text WCAG AA ✓ Pass

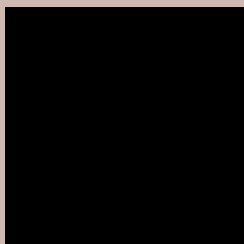
Large Text (above 18pt) WCAG AAA ✓ Pass

Any Text WCAG AAA ✓ Pass

If you want to check with other color combinations, try the [Color Contrast Checker](#).

# XYZ 51.4277, 51.6379, 49.9044

## Background



This preview shows how black text looks on a background with the XYZ color 51.4277, 51.6379, 49.9044.



This preview shows how white text looks on a background with the XYZ color 51.4277, 51.6379,



# Color Blindness Simulation

Color vision deficiency is a very complex topic, and I could not describe the different causes any better than Wikipedia does, so if you want to learn more, you should check out their [article about color blindness](#).

## Dichromacy



### Original Color

51.4277, 51.6379, 49.9044

### Protanopia

49.5189, 51.8989, 51.1236

### Deuteranopia

52.7177, 51.6818, 49.8449



## Tritanopia

53.4210, 51.4995, 60.5509

# Trichromacy



## Original Color

51.4277, 51.6379, 49.9044

## Protanomaly

50.2552, 51.9698, 50.5625

## Deuteranomaly

52.3496, 51.8015, 49.8874

## Tritanomaly

52.5569, 51.4525, 56.4515

# Monochromacy



## Original Color

51.4277, 51.6379, 49.9044

## Achromatopsia

49.5206, 52.0996, 56.7364

## Achromatomaly

50.1932, 51.8534, 54.3769

# CSS Examples

## Text

The CSS property to change the color of the text to XYZ 51.4277, 51.6379, 49.9044 is called "color". The color property can be set on classes, ids or directly on the HTML element.

This example shows how text in the color `rgb(207, 186, 179)` looks like.

```
.text, #text, p{  
    color:rgb(207, 186, 179)  
}
```

If you want to add a text shadow in that color use the text-shadow property, you can generate a text shadow directly with our [CSS Text Shadow Generator](#).

Here you see how black text with a 4 pixel rgb(207, 186, 179) colored shadow looks like.

```
.shadow{ text-shadow: 4px 4px 2px rgb(207, 186, 179) }
```

## Border

The CSS property to change the border of an element to XYZ 51.4277, 51.6379, 49.9044 is called "border". The border property can be set on classes, ids or directly on the HTML element.

This example shows the color as border, it can be applied via the CSS property "border" or "border-color".

```
.border, #border, table{ border:4px solid rgb(207, 186, 179) }
```



If only the border color should be changed use the property `border-color`.

```
.border{ border-color:rgb(207, 186, 179) }
```

If you want to add a box shadow in that color use:

Here you see how a box with a 4 pixel `rgb(207, 186, 179)` colored shadow looks like.

```
.boxshadow{ -moz-box-shadow:4px 4px 4px  
4px rgb(207, 186, 179); -webkit-box-  
shadow:4px 4px 4px 4px rgb(207, 186, 179);  
box-shadow:4px 4px 4px 4px rgb(207, 186,  
179) }
```

# Background

The CSS property to change the background color of an element to XYZ 51.4277, 51.6379, 49.9044 is called "background". The background property can be set on classes, ids or directly on the HTML element.

```
.background, #background, body{  
background: rgb(207, 186, 179) }
```

If only the background color should be changed can be used:

```
.background{ background-color: rgb(207,  
186, 179) }
```

This example shows the color as background, it is applied via the CSS property "background".

To optimize and compress your CSS code, you can use our [online CSS compressor and optimizer](#) based on csstidy. If you want to create a linear or radial gradient as background or border, check our [CSS Gradient Generator](#).

Hey! You found this booklet interesting? Support Converting Colors with the new Membership Option!

The pro membership hides all ads, plus gives you double the colors in the color bucket, and more awesome pro features!

**[Learn more, Memberships starting at \\$2.50/m!](#)**

**Follow me  
on Twitter!**

@ConvertingColor