

Converting Colors

XYZ(51.4120, 50.6632, 44.2377)

Have a look what the booklet for
XYZ(51.4120, 50.6632, 44.2377)
contains.

XYZ(51.2364, 50.4292, 44.0791)	3
<i>Conversions</i>	4
<i>Details</i>	6
<i>Harmonies</i>	12
<i>Previews</i>	24
<i>Color Blindness Simulation</i>	28
<i>CSS Examples</i>	31

Color

**XYZ(51.2364, 50.4292,
44.0791)**

Conversions

Conversions Part 1

Format	Color
Hex	D5B6A8
RGB	213, 182, 168
RGB Percent	84%, 71%, 66%
CMY	0.1647, 0.2863, 0.3412
CMYK	0.00, 0.15, 0.21, 0.16
HSL	19°, 35%, 75%
HSV	19°, 21%, 84%
XYZ	51.2364, 50.4292, 44.0791
YIQ	189.6730, 22.9700, 2.2180

Conversions

Conversions Part 2

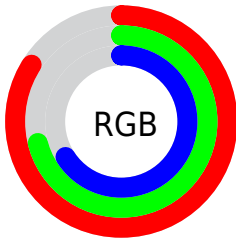
Format	Color
RYB	213, 188, 168
Decimal	14005928
CIELab	76.33, 8.94, 11.24
CIElCh	76, 14.365, 51.490
Yxy	50.4292, 0.3515, 0.3460
Android (android.graphics.Color)	4292196008 (0xFFD5B6A8)
YUV	189.6730, -10.6848, 20.4578
Hunter-Lab	71.0135, 4.5145, 12.9073

Details

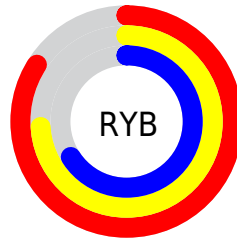
The XYZ color **51.2364, 50.4292, 44.0791** is a light color, and the websafe version is hex **CC9999**. A complement of this color would be **48.5816, 53.9743, 70.8087**, and the grayscale version is **48.8068, 51.3486, 55.9186**.

A 20% lighter version of the original color is **85.1338, 87.7368, 82.2599**, and **25.1032, 24.2306, 19.8769** is the 20% darker color. If you saturate the color by 10%, you get **46.5637, 44.0034, 33.5203**, and if you desaturate by 10%, it is **56.5517, 57.6193, 56.4568**.

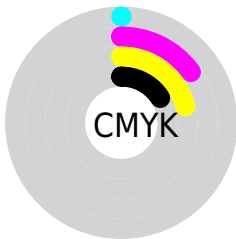
Distribution



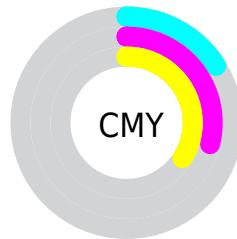
- Red (84%)
- Green (71%)
- Blue (66%)



- Red (84%)
- Yellow (74%)
- Blue (66%)



- Cyan (0%)
- Magenta (15%)
- Yellow (21%)
- Black (16%)





- Cyan (16%)
- Magenta (29%)
- Yellow (34%)

Brightness & Saturation Gradients


These gradients show how the XYZ color 51.2364, 50.4292, 44.0791 changes by changing the brightness by 10 percent. The first figure shows a shift by +10% for each color and the second figure -10%.


Similar to the brightness gradients but the following saturation gradients show a change of the XYZ color 51.2364, 50.4292, 44.0791 by changing the saturation by 10% instead.


 51.2364, 50.4292,
44.0791


 51.2364, 50.4292,
44.0791


381.8541,
388.3420, 379.0818

 36.6186, 35.7545,
30.3950


 91.1850, 90.8105,
82.6405

 25.0846, 24.2447,
19.8840


 117.2466,
117.2859, 108.3549

 16.2692, 15.5152,
12.1275


147.8534,
148.4637, 138.9166

 9.8069, 9.1818,
6.7070

183.3708,
184.7282, 174.7439

 5.3324, 4.8599,
3.2039

224.1643,
226.4639, 216.2556

 2.4803, 2.1653,
1.1997

270.5990,

 0.8853, 0.7010,

274.0552, 263.8701

0.0000

323.0405,
327.8864, 318.0060

■ 0.0000, 0.0000,
0.0000

■ 51.2364, 50.4292,
44.0791

■ 51.2364, 50.4292,
44.0791

■ 46.5637, 44.0034,
33.5203

■ 56.5517, 57.6193,
56.4568

■ 42.5042, 38.3093,
24.6909

■ 62.5295, 65.5910,
70.7310

■ 39.0318, 33.3222,
17.4983

■ 69.1938, 74.3700,
86.9785

■ 36.1171, 29.0131,
11.8399

■ 76.5663, 83.9785,
105.2709

■ 33.7278, 25.3510,
7.6016

■ 81.2507, 92.8862,
108.2542

■ 31.8278, 22.3021,
4.6527

■ 30.3755, 19.8291,
2.8381

■ 29.4057, 18.0763,
1.9392

Harmonies

Analogous

The Analogous color harmony consists of three colors that are next to each other on the color wheel.



52.9250, 50.4292, 49.6413



51.2364, 50.4292, 44.0791



48.7036, 50.4292, 41.4806

Triad

The Triadic color harmony groups three colors that are evenly spaced from another and form a triangle on the color wheel.



51.2364, 50.4292, 44.0791



42.9793, 50.4292, 52.7384



49.8581, 50.4292, 69.9341

Complementary

The Complementary color scheme is a pair of colors which are on the opposite of each other on the color wheel.



51.2364, 50.4292, 44.0791



48.5816, 53.9743, 70.8087

Split Complementary

Split-complementary colors differ from the complementary color scheme. The scheme consists of three colors, the original color and two neighbors of the complement color.



47.1675, 50.4292, 70.9610



51.2364, 50.4292, 44.0791



43.2623, 50.4292, 60.5364

Square

The Square scheme is like the rectangle color scheme, but the four colors are evenly spaced on the color wheel.



51.2364, 50.4292, 44.0791



43.9836, 50.4292, 46.1636



44.7718, 50.4292, 67.3812



52.1087, 50.4292, 64.6942

Rectangle

The Rectangle color scheme consists of four colors that form a rectangle on the color wheel.



51.2364, 50.4292, 44.0791



46.9049, 50.4292, 41.5921



44.7718, 50.4292, 67.3812



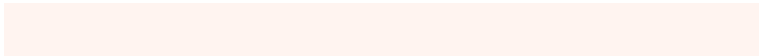
48.9728, 50.4292, 70.8019

Sweetspot

The Sweet Spot groups the original color and five complimentary colors.



51.2378, 50.4315, 44.0802



89.4133, 92.5129, 95.3488



51.8106, 46.2988, 60.5440



19.0116, 19.6328, 20.1067



0.0000, 0.0000, 0.0000



20.3446, 21.4041, 23.3091

Same Dimension

The Same Dimension uses a secret algorithm to generate beautiful new colors.



51.2378, 50.4315, 44.0802



73.9880, 71.6656, 59.3678



56.1017, 60.1594, 45.7015



12.7354, 13.0450, 13.0074



18.0428, 11.2028, 1.2114



1.1613, 0.8217, 0.0974

Inverse Universe

The Inverse Universe completely reimagines the original color for something new.



48.5816, 53.9743, 70.8087



69.3531, 77.8375, 105.9766



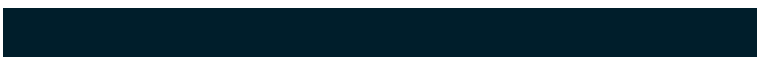
43.8814, 44.5738, 69.2419



12.4510, 13.4254, 15.8726



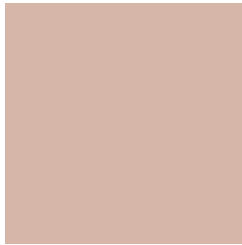
13.7773, 15.8163, 40.7799



0.9032, 1.0984, 2.4837

Previews

White Background



This preview shows how the XYZ color 51.2364, 50.4292, 44.0791 looks on a white background.

Color Contrast Check

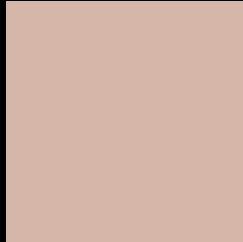
Large Text (above 18pt) WCAG AA × Fail

Any Text WCAG AA × Fail

Large Text (above 18pt) WCAG AAA × Fail

Any Text WCAG AAA × Fail

Black Background



This preview shows how the XYZ color 51.2364, 50.4292, 44.0791 looks on a black background.

Color Contrast Check

Large Text (above 18pt) WCAG AA ✓ Pass

Any Text WCAG AA ✓ Pass

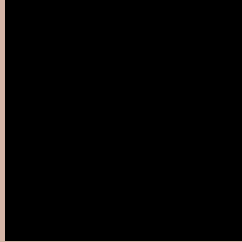
Large Text (above 18pt) WCAG AAA ✓ Pass

Any Text WCAG AAA ✓ Pass

If you want to check with other color combinations, try the [Color Contrast Checker](#).

XYZ 51.2364, 50.4292, 44.0791

Background



This preview shows how black text looks on a background with the XYZ color 51.2364, 50.4292, 44.0791.



This preview shows how white text looks on a background with the XYZ color 51.2364, 50.4292,

Color Blindness Simulation

Color vision deficiency is a very complex topic, and I could not describe the different causes any better than Wikipedia does, so if you want to learn more, you should check out their [article about color blindness](#).

Dichromacy



Original Color

51.2364, 50.4292, 44.0791

Protanopia

48.0989, 50.6425, 45.7680

Deuteranopia

51.5274, 50.5792, 44.0928



Tritanopia

53.7537, 50.2455, 56.7344

Trichromacy



Original Color

51.2364, 50.4292, 44.0791

Protanomaly

49.1717, 50.5766, 45.2009

Deuteranomaly

51.5274, 50.5792, 44.0928

Tritanomaly

52.6917, 50.1062, 51.6941

Monochromacy



Original Color

51.2364, 50.4292, 44.0791

Achromatopsia

48.9429, 51.4918, 56.0745

Achromatomaly

49.5025, 50.9238, 51.4762

CSS Examples

Text

The CSS property to change the color of the text to XYZ 51.2364, 50.4292, 44.0791 is called "color". The color property can be set on classes, ids or directly on the HTML element.

This example shows how text in the color `rgb(213, 182, 168)` looks like.

```
.text, #text, p{  
    color:rgb(213, 182, 168)  
}
```

If you want to add a text shadow in that color use the text-shadow property, you can generate a text shadow directly with our [CSS Text Shadow Generator](#).

Here you see how black text with a 4 pixel rgb(213, 182, 168) colored shadow looks like.

```
.shadow{ text-shadow: 4px 4px 2px rgb(213, 182, 168) }
```

Border

The CSS property to change the border of an element to XYZ 51.2364, 50.4292, 44.0791 is called "border". The border property can be set on classes, ids or directly on the HTML element.

This example shows the color as border, it can be applied via the CSS property "border" or "border-color".

```
.border, #border, table{ border:4px solid rgb(213, 182, 168) }
```


If only the border color should be changed use the property `border-color`.

```
.border{ border-color:rgb(213, 182, 168) }
```

If you want to add a box shadow in that color use:

Here you see how a box with a 4 pixel `rgb(213, 182, 168)` colored shadow looks like.

```
.boxshadow{ -moz-box-shadow:4px 4px 4px  
4px rgb(213, 182, 168); -webkit-box-  
shadow:4px 4px 4px 4px rgb(213, 182, 168);  
box-shadow:4px 4px 4px 4px rgb(213, 182,  
168) }
```

Background

The CSS property to change the background color of an element to XYZ 51.2364, 50.4292, 44.0791 is called "background". The background property can be set on classes, ids or directly on the HTML element.

```
.background, #background, body{  
background: rgb(213, 182, 168) }
```

If only the background color should be changed can be used:

```
.background{ background-color: rgb(213,  
182, 168) }
```

This example shows the color as background, it is applied via the CSS property "background".

To optimize and compress your CSS code, you can use our [online CSS compressor and optimizer](#) based on csstidy. If you want to create a linear or radial gradient as background or border, check our [CSS Gradient Generator](#).

Hey! You found this booklet interesting? Support Converting Colors with the new Membership Option!

The pro membership hides all ads, plus gives you double the colors in the color bucket, and more awesome pro features!

[Learn more, Memberships starting at \\$2.50/m!](#)

**Follow me
on Twitter!**

@ConvertingColor