

Converting Colors

XYZ(51.4131, 50.1399, 47.5257)

Have a look what the booklet for
XYZ(51.4131, 50.1399, 47.5257)
contains.

XYZ(51.4131, 50.1399, 47.5257)	3
<i>Conversions</i>	4
<i>Details</i>	6
<i>Harmonies</i>	12
<i>Previews</i>	24
<i>Color Blindness Simulation</i>	28
<i>CSS Examples</i>	31

Color

**XYZ(51.4131, 50.1399,
47.5257)**

Conversions

Conversions Part 1

Format	Color
Hex	D4B5AF
RGB	212, 181, 175
RGB Percent	83%, 71%, 69%
CMY	0.1686, 0.2902, 0.3137
CMYK	0.00, 0.15, 0.17, 0.17
HSL	10°, 30%, 76%
HSV	10°, 17%, 83%
XYZ	51.4131, 50.1399, 47.5257
YIQ	189.5850, 20.4020, 4.7060

Conversions

Conversions Part 2

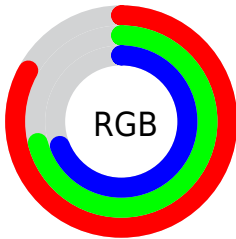
Format	Color
R _Y B	212, 182, 175
Decimal	13940143
CIE Lab	76.16, 10.17, 7.18
CIE LCh	76, 12.451, 35.196
Yxy	50.1399, 0.3449, 0.3363
Android (android.graphics.Color)	4292130223 (0xFFD4B5AF)
YUV	189.5850, -7.1904, 19.6580
Hunter-Lab	70.8095, 5.6879, 9.7726

Details

The XYZ color **51.4131, 50.1399, 47.5257** is a light color, and the websafe version is hex **CC9999**. A complement of this color would be **51.6338, 58.0088, 70.7632**, and the grayscale version is **48.7378, 51.2760, 55.8396**.

A 20% lighter version of the original color is **85.8071, 87.5415, 87.2376**, and **25.1990, 24.0365, 22.0503** is the 20% darker color. If you saturate the color by 10%, you get **46.1085, 42.6051, 36.2786**, and if you desaturate by 10%, it is **57.5077, 58.7307, 60.6501**.

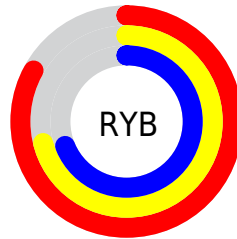
Distribution



Red (83%)

Green (71%)

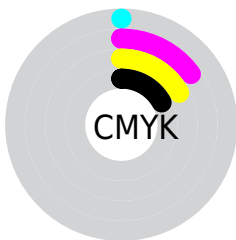
Blue (69%)



Red (83%)

Yellow (71%)

Blue (69%)

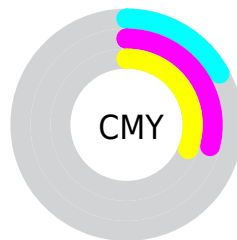


Cyan (0%)

Magenta (15%)

Yellow (17%)

Black (17%)



Cyan (17%)

Magenta (29%)

Yellow (31%)

Brightness & Saturation Gradients

These gradients show how the XYZ color 51.4131, 50.1399, 47.5257 changes by changing the brightness by 10 percent. The first figure shows a shift by +10% for each color and the second figure -10%.

Similar to the brightness gradients but the following saturation gradients show a change of the XYZ color 51.4131, 50.1399, 47.5257 by changing the saturation by 10% instead.

■ 51.4131, 50.1399,
47.5257

■ 51.4131, 50.1399,
47.5257

382.5279,
387.2128, 393.3634

■ 36.7599, 35.5246,
33.0941

■ 91.4445, 90.3821,
87.8560

■ 25.1944, 24.0672,
21.9268

117.5533,
116.7778, 114.5918

■ 16.3515, 15.3835,
13.6054

148.2114,
147.8691, 146.2660

■ 9.8656, 9.0890,
7.7111

183.7841,
184.0403, 183.2973

■ 5.3715, 4.7993,
3.8255

224.6367,
225.6759, 226.1041

■ 2.5038, 2.1300,
1.5301

271.1347,

■ 0.8972, 0.6814,

273.1602, 275.1050

0.2402

323.6433,
326.8777, 330.7186

■ 0.0000, 0.0000,
0.0000

■ 51.4131, 50.1399,
47.5257

■ 51.4131, 50.1399,
47.5257

■ 46.1085, 42.6051,
36.2786

■ 57.5077, 58.7307,
60.6501

■ 41.5574, 36.0789,
26.8198

■ 64.4189, 68.4091,
75.7289

■ 37.7263, 30.5204,
19.0577

■ 72.1768, 79.2138,
92.8388

■ 34.5777, 25.8830,
12.8913

■ 80.0262, 90.8664,
107.9289

■ 32.0707, 22.1167,
8.2090

■ 80.9616, 92.7371,
108.2407

■ 30.1595, 19.1661,
4.8847

■ 28.7924, 16.9696,
2.7708

■ 27.9042, 15.4551,
1.6675

■ 27.7351, 15.1642,
1.4652

Harmonies

Analogous

The Analogous color harmony consists of three colors that are next to each other on the color wheel.



52.2601, 50.1399, 53.4398



51.4131, 50.1399, 47.5257



49.5613, 50.1399, 43.7528

Triad

The Triadic color harmony groups three colors that are evenly spaced from another and form a triangle on the color wheel.



51.4131, 50.1399, 47.5257



43.7033, 50.1399, 49.3848



48.0635, 50.1399, 68.3985

Complementary

The Complementary color scheme is a pair of colors which are on the opposite of each other on the color wheel.



51.4131, 50.1399, 47.5257



51.6338, 58.0088, 70.7632

Split Complementary

Split-complementary colors differ from the complementary color scheme. The scheme consists of three colors, the original color and two neighbors of the complement color.



45.8011, 50.1399, 67.0922



51.4131, 50.1399, 47.5257



43.3315, 50.1399, 55.7644

Square

The Square scheme is like the rectangle color scheme, but the four colors are evenly spaced on the color wheel.



51.4131, 50.1399, 47.5257



45.1200, 50.1399, 44.7633



44.0874, 50.1399, 62.3301



50.2863, 50.1399, 65.7675

Rectangle

The Rectangle color scheme consists of four colors that form a rectangle on the color wheel.



51.4131, 50.1399, 47.5257



48.0328, 50.1399, 42.7775



44.0874, 50.1399, 62.3301



47.2822, 50.1399, 68.4074

Sweetspot

The Sweet Spot groups the original color and five complimentary colors.



51.4145, 50.1422, 47.5268



89.7513, 92.5793, 97.3406



53.6772, 49.1358, 65.3351



19.0566, 19.5999, 20.5004



0.0000, 0.0000, 0.0000



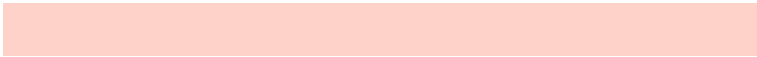
20.3446, 21.4041, 23.3091

Same Dimension

The Same Dimension uses a secret algorithm to generate beautiful new colors.



51.4145, 50.1422, 47.5268



74.9166, 71.6602, 65.4196



55.3247, 57.9626, 48.8302



12.5844, 12.7430, 12.9571



17.1706, 9.4585, 0.9207



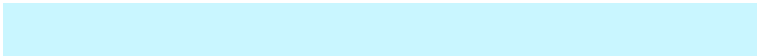
1.0873, 0.6739, 0.0728

Inverse Universe

The Inverse Universe completely reimagines the original color for something new.



51.6338, 58.0088, 70.7632



75.3089, 85.8007, 107.1997



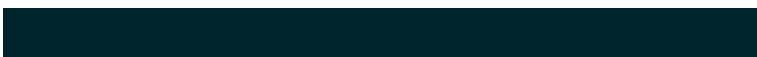
47.5361, 49.8132, 69.3973



12.6127, 13.7487, 15.9265



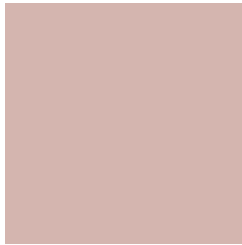
17.1780, 22.6177, 41.9134



1.0830, 1.4580, 2.5436

Previews

White Background



This preview shows how the XYZ color 51.4131, 50.1399, 47.5257 looks on a white background.

Color Contrast Check

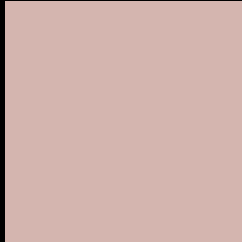
Large Text (above 18pt) WCAG AA × Fail

Any Text WCAG AA × Fail

Large Text (above 18pt) WCAG AAA × Fail

Any Text WCAG AAA × Fail

Black Background



This preview shows how the XYZ color 51.4131, 50.1399, 47.5257 looks on a black background.

Color Contrast Check

Large Text (above 18pt) WCAG AA ✓ Pass

Any Text WCAG AA ✓ Pass

Large Text (above 18pt) WCAG AAA ✓ Pass

Any Text WCAG AAA ✓ Pass

If you want to check with other color combinations, try the [Color Contrast Checker](#).

XYZ 51.4131, 50.1399, 47.5257

Background



This preview shows how black text looks on a background with the XYZ color 51.4131, 50.1399, 47.5257.



This preview shows how white text looks on a background with the XYZ color 51.4131, 50.1399,

Color Blindness Simulation

Color vision deficiency is a very complex topic, and I could not describe the different causes any better than Wikipedia does, so if you want to learn more, you should check out their [article about color blindness](#).

Dichromacy



Original Color

51.4131, 50.1399, 47.5257

Protanopia

48.0543, 50.2243, 49.2810

Deuteranopia

51.1257, 49.9918, 47.5122



Tritanopia

53.1664, 49.9427, 56.7069

Trichromacy



Original Color

51.4131, 50.1399, 47.5257

Protanomaly

49.3722, 50.2898, 48.6997

Deuteranomaly

51.1257, 49.9918, 47.5122

Tritanomaly

52.4236, 49.9315, 53.3291

Monochromacy



Original Color

51.4131, 50.1399, 47.5257

Achromatopsia

48.9429, 51.4918, 56.0745

Achromatomaly

49.8160, 51.0492, 53.1268

CSS Examples

Text

The CSS property to change the color of the text to XYZ 51.4131, 50.1399, 47.5257 is called "color". The color property can be set on classes, ids or directly on the HTML element.

This example shows how text in the color `rgb(212, 181, 175)` looks like.

```
.text, #text, p{  
    color:rgb(212, 181, 175)  
}
```

If you want to add a text shadow in that color use the text-shadow property, you can generate a text shadow directly with our [CSS Text Shadow Generator](#).

Here you see how black text with a 4 pixel rgb(212, 181, 175) colored shadow looks like.

```
.shadow{ text-shadow: 4px 4px 2px rgb(212, 181, 175) }
```

Border

The CSS property to change the border of an element to XYZ 51.4131, 50.1399, 47.5257 is called "border". The border property can be set on classes, ids or directly on the HTML element.

This example shows the color as border, it can be applied via the CSS property "border" or "border-color".

```
.border, #border, table{ border:4px solid rgb(212, 181, 175) }
```


If only the border color should be changed use the property `border-color`.

```
.border{ border-color:rgb(212, 181, 175) }
```

If you want to add a box shadow in that color use:

Here you see how a box with a 4 pixel `rgb(212, 181, 175)` colored shadow looks like.

```
.boxshadow{ -moz-box-shadow:4px 4px 4px  
4px rgb(212, 181, 175); -webkit-box-  
shadow:4px 4px 4px 4px rgb(212, 181, 175);  
box-shadow:4px 4px 4px 4px rgb(212, 181,  
175) }
```

Background

The CSS property to change the background color of an element to XYZ 51.4131, 50.1399, 47.5257 is called "background". The background property can be set on classes, ids or directly on the HTML element.

```
.background, #background, body{  
background: rgb(212, 181, 175) }
```

If only the background color should be changed can be used:

```
.background{ background-color: rgb(212,  
181, 175) }
```

This example shows the color as background, it is applied via the CSS property "background".

To optimize and compress your CSS code, you can use our [online CSS compressor and optimizer](#) based on csstidy. If you want to create a linear or radial gradient as background or border, check our [CSS Gradient Generator](#).

Hey! You found this booklet interesting? Support Converting Colors with the new Membership Option!

The pro membership hides all ads, plus gives you double the colors in the color bucket, and more awesome pro features!

[Learn more, Memberships starting at \\$2.50/m!](#)

**Follow me
on Twitter!**

@ConvertingColor