

Converting Colors

XYZ(51.4133, 50.1752, 53.6469)

Have a look what the booklet for
XYZ(51.4133, 50.1752, 53.6469)
contains.

XYZ(51.3230, 50.2665, 53.4518)	3
<i>Conversions</i>	4
<i>Details</i>	6
<i>Harmonies</i>	12
<i>Previews</i>	24
<i>Color Blindness Simulation</i>	28
<i>CSS Examples</i>	31

Color

**XYZ(51.3230, 50.2665,
53.4518)**

Conversions

Conversions Part 1

Format	Color
Hex	CFB6BA
RGB	207, 182, 186
RGB Percent	81%, 71%, 73%
CMY	0.1882, 0.2863, 0.2706
CMYK	0.00, 0.12, 0.10, 0.19
HSL	350°, 21%, 76%
HSV	350°, 12%, 81%
XYZ	51.3230, 50.2665, 53.4518
YIQ	189.9310, 13.6160, 6.5440

Conversions

Conversions Part 2

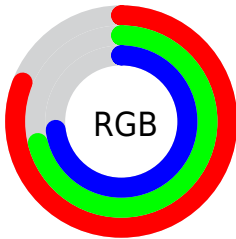
Format	Color
R _Y B	207, 182, 186
Decimal	13612730
CIE Lab	76.23, 9.60, 1.25
CIE LCh	76, 9.683, 7.413
Yxy	50.2665, 0.3310, 0.3242
Android (android.graphics.Color)	4291802810 (0xFFCFB6BA)
YUV	189.9310, -1.9380, 14.9695
Hunter-Lab	70.8989, 5.1414, 4.9295

Details

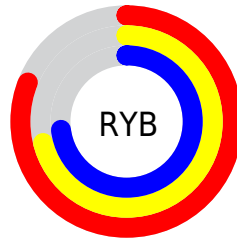
The XYZ color **51.3230, 50.2665, 53.4518** is a light color, and the websafe version is hex **CCCCCC**. A complement of this color would be **52.3857, 58.8838, 65.1074**, and the grayscale version is **48.9103, 51.4575, 56.0372**.

A 20% lighter version of the original color is **87.8415, 88.8199, 96.5186**, and **25.2208, 24.1663, 25.5256** is the 20% darker color. If you saturate the color by 10%, you get **45.6555, 41.7120, 42.9897**, and if you desaturate by 10%, it is **57.8450, 60.1688, 65.3101**.

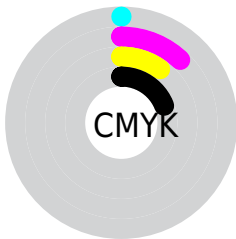
Distribution



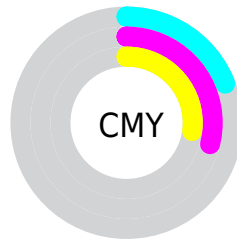
- Red (81%)
- Green (71%)
- Blue (73%)



- Red (81%)
- Yellow (71%)
- Blue (73%)



- Cyan (0%)
- Magenta (12%)
- Yellow (10%)
- Black (19%)



- Cyan (19%)
- Magenta (29%)
- Yellow (27%)

Brightness & Saturation Gradients

These gradients show how the XYZ color 51.3230, 50.2665, 53.4518 changes by changing the brightness by 10 percent. The first figure shows a shift by +10% for each color and the second figure -10%.

Similar to the brightness gradients but the following saturation gradients show a change of the XYZ color 51.3230, 50.2665, 53.4518 by changing the saturation by 10% instead.

■ 51.3230, 50.2665,
53.4518

■ 51.3230, 50.2665,
53.4518

382.1844,
387.7072, 417.1315

■ 36.6878, 35.6252,
37.7734

■ 91.3122, 90.5696,
96.7171

■ 25.1384, 24.1449,
25.5064

117.3969,
117.0002, 125.1411

■ 16.3095, 15.4411,
16.2323

148.0289,
148.1294, 158.6507

■ 9.8357, 9.1296,
9.5325

183.5734,
184.3415, 197.6644

■ 5.3516, 4.8258,
4.9886

224.3959,
226.0209, 242.6008

■ 2.4918, 2.1454,
2.1820

270.8616,

■ 0.8911, 0.6900,

273.5521, 293.8784

0.6639

323.3360,
327.3194, 351.9158

■ 0.0000, 0.0000,
0.0000

■ 51.3230, 50.2665,
53.4518

■ 51.3230, 50.2665,
53.4518

■ 45.6555, 41.7120,
42.9897

■ 57.8450, 60.1688,
65.3101

■ 40.8029, 34.4405,
33.8691

■ 65.2506, 71.4666,
78.6102

■ 36.7286, 28.3921,
26.0364

■ 73.5728, 84.2135,
93.3995

■ 33.3916, 23.4992,
19.4331

■ 79.5424, 92.0055,
108.1743

■ 30.7472, 19.6881,
13.9961

■ 28.7456, 16.8760,
9.6569

■ 27.3302, 14.9684,
6.3392

■ 26.4343, 13.8524,
3.9568

■ 26.0082, 13.3759,
2.6568

Harmonies

Analogous

The Analogous color harmony consists of three colors that are next to each other on the color wheel.



51.0731, 50.2665, 58.6624



51.3230, 50.2665, 53.4518



50.6037, 50.2665, 48.8791

Triad

The Triadic color harmony groups three colors that are evenly spaced from another and form a triangle on the color wheel.



51.3230, 50.2665, 53.4518



45.6870, 50.2665, 47.1682



46.4484, 50.2665, 64.4917

Complementary

The Complementary color scheme is a pair of colors which are on the opposite of each other on the color wheel.



51.3230, 50.2665, 53.4518



52.3857, 58.8838, 65.1074

Split Complementary

Split-complementary colors differ from the complementary color scheme. The scheme consists of three colors, the original color and two neighbors of the complement color.



45.0572, 50.2665, 61.0337



51.3230, 50.2665, 53.4518



44.6254, 50.2665, 50.9806

Square

The Square scheme is like the rectangle color scheme, but the four colors are evenly spaced on the color wheel.



51.3230, 50.2665, 53.4518



47.3278, 50.2665, 45.4037



44.3978, 50.2665, 56.0318



48.2286, 50.2665, 65.2571

Rectangle

The Rectangle color scheme consists of four colors that form a rectangle on the color wheel.



51.3230, 50.2665, 53.4518



49.6818, 50.2665, 46.7323



44.3978, 50.2665, 56.0318



45.9211, 50.2665, 63.5955

Sweetspot

The Sweet Spot groups the original color and five complimentary colors.



51.3244, 50.2687, 53.4529



90.5327, 93.1242, 100.7390



52.5752, 50.6364, 66.0348



19.2014, 19.6644, 21.2428



0.0000, 0.0000, 0.0000



20.3446, 21.4041, 23.3091

Same Dimension

The Same Dimension uses a secret algorithm to generate beautiful new colors.



51.3244, 50.2687, 53.4529



80.2415, 77.5164, 81.9726



52.6629, 53.6162, 51.8321



11.8847, 11.8386, 12.6687



16.4092, 8.4365, 1.7949



0.9422, 0.4816, 0.2306

Inverse Universe

The Inverse Universe completely reimagines the original color for something new.



51.3244, 50.2687, 53.4529



80.2415, 77.5164, 81.9726



50.9025, 55.1454, 66.9933



11.8847, 11.8386, 12.6687



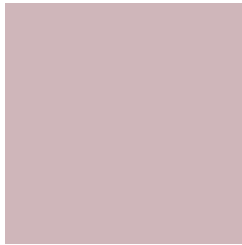
16.4092, 8.4365, 1.7949



0.9422, 0.4816, 0.2306

Previews

White Background



This preview shows how the XYZ color 51.3230, 50.2665, 53.4518 looks on a white background.

Color Contrast Check

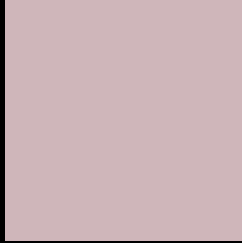
Large Text (above 18pt) WCAG AA × Fail

Any Text WCAG AA × Fail

Large Text (above 18pt) WCAG AAA × Fail

Any Text WCAG AAA × Fail

Black Background



This preview shows how the XYZ color 51.3230, 50.2665, 53.4518 looks on a black background.

Color Contrast Check

Large Text (above 18pt) WCAG AA ✓ Pass

Any Text WCAG AA ✓ Pass

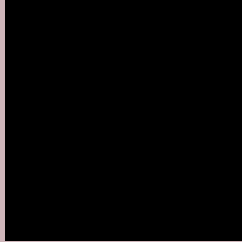
Large Text (above 18pt) WCAG AAA ✓ Pass

Any Text WCAG AAA ✓ Pass

If you want to check with other color combinations, try the [Color Contrast Checker](#).

XYZ 51.3230, 50.2665, 53.4518

Background



This preview shows how black text looks on a background with the XYZ color 51.3230, 50.2665, 53.4518.



This preview shows how white text looks on a background with the XYZ color 51.3230, 50.2665,

53.4518.

Color Blindness Simulation

Color vision deficiency is a very complex topic, and I could not describe the different causes any better than Wikipedia does, so if you want to learn more, you should check out their [article about color blindness](#).

Dichromacy



Original Color

51.3230, 50.2665, 53.4518

Protanopia

48.4415, 50.2911, 55.2981

Deuteranopia

51.3230, 50.2665, 53.4518



Tritanopia

52.3866, 50.3978, 58.5964

Trichromacy



Original Color

51.3230, 50.2665, 53.4518

Protanomaly

49.4520, 50.1991, 54.6599

Deuteranomaly

51.3230, 50.2665, 53.4518

Tritanomaly

52.0507, 50.2634, 56.8276

Monochromacy



Original Color

51.3230, 50.2665, 53.4518

Achromatopsia

48.9429, 51.4918, 56.0745

Achromatomaly

49.7206, 50.9505, 55.3580

CSS Examples

Text

The CSS property to change the color of the text to XYZ 51.3230, 50.2665, 53.4518 is called "color". The color property can be set on classes, ids or directly on the HTML element.

This example shows how text in the color `rgb(207, 182, 186)` looks like.

```
.text, #text, p{  
    color:rgb(207, 182, 186)  
}
```

If you want to add a text shadow in that color use the text-shadow property, you can generate a text shadow directly with our [CSS Text Shadow Generator](#).

Here you see how black text with a 4 pixel rgb(207, 182, 186) colored shadow looks like.

```
.shadow{ text-shadow: 4px 4px 2px rgb(207, 182, 186) }
```

Border

The CSS property to change the border of an element to XYZ 51.3230, 50.2665, 53.4518 is called "border". The border property can be set on classes, ids or directly on the HTML element.

This example shows the color as border, it can be applied via the CSS property "border" or "border-color".

```
.border, #border, table{ border:4px solid rgb(207, 182, 186) }
```


If only the border color should be changed use the property `border-color`.

```
.border{ border-color:rgb(207, 182, 186) }
```

If you want to add a box shadow in that color use:

Here you see how a box with a 4 pixel `rgb(207, 182, 186)` colored shadow looks like.

```
.boxshadow{ -moz-box-shadow:4px 4px 4px  
4px rgb(207, 182, 186); -webkit-box-  
shadow:4px 4px 4px 4px rgb(207, 182, 186);  
box-shadow:4px 4px 4px 4px rgb(207, 182,  
186) }
```

Background

The CSS property to change the background color of an element to XYZ 51.3230, 50.2665, 53.4518 is called "background". The background property can be set on classes, ids or directly on the HTML element.

```
.background, #background, body{  
background: rgb(207, 182, 186) }
```

If only the background color should be changed can be used:

```
.background{ background-color: rgb(207,  
182, 186) }
```

This example shows the color as background, it is applied via the CSS property "background".

To optimize and compress your CSS code, you can use our [online CSS compressor and optimizer](#) based on csstidy. If you want to create a linear or radial gradient as background or border, check our [CSS Gradient Generator](#).

Hey! You found this booklet interesting? Support Converting Colors with the new Membership Option!

The pro membership hides all ads, plus gives you double the colors in the color bucket, and more awesome pro features!

[Learn more, Memberships starting at \\$2.50/m!](#)

**Follow me
on Twitter!**

@ConvertingColor