

Converting Colors

XYZ(51.4830, 50.7753, 56.9610)

Have a look what the booklet for
XYZ(51.4830, 50.7753, 56.9610)
contains.

XYZ(51.5568, 50.9241, 56.9812)	3
<i>Conversions</i>	4
<i>Details</i>	6
<i>Harmonies</i>	12
<i>Previews</i>	24
<i>Color Blindness Simulation</i>	28
<i>CSS Examples</i>	31

Color

**XYZ(51.5568, 50.9241,
56.9812)**

Conversions

Conversions Part 1

Format	Color
Hex	CCB8C0
RGB	204, 184, 192
RGB Percent	80%, 72%, 75%
CMY	0.2000, 0.2784, 0.2471
CMYK	0.00, 0.10, 0.06, 0.20
HSL	336°, 16%, 76%
HSV	336°, 10%, 80%
XYZ	51.5568, 50.9241, 56.9812
YIQ	190.8920, 9.3520, 6.7280

Conversions

Conversions Part 2

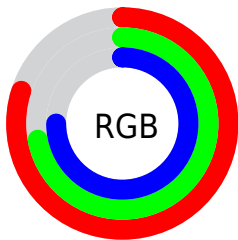
Format	Color
R_YB	204, 184, 192
Decimal	13416640
CIE Lab	76.63, 8.49, -1.46
CIE LCh	77, 8.618, 350.253
Yxy	50.9241, 0.3233, 0.3193
Android (android.graphics.Color)	4291606720 (0xFFCCB8C0)
YUV	190.8920, 0.5462, 11.4957
Hunter-Lab	71.3611, 4.0803, 2.6103

Details

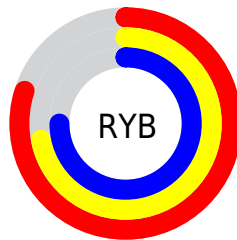
The XYZ color **51.5568, 50.9241, 56.9812** is a light color, and the websafe version is hex **CCCCCC**. A complement of this color would be **51.3258, 57.3630, 60.5944**, and the grayscale version is **49.4530, 52.0284, 56.6590**.

A 20% lighter version of the original color is **89.3434, 90.3575, 101.5388**, and **25.3542, 24.5807, 27.8343** is the 20% darker color. If you saturate the color by 10%, you get **46.3207, 42.5326, 48.8197**, and if you desaturate by 10%, it is **57.5197, 60.5873, 65.9429**.

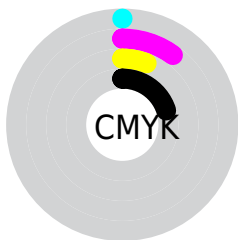
Distribution



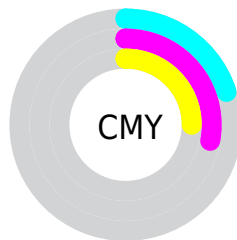
- Red (80%)
- Green (72%)
- Blue (75%)



- Red (80%)
- Yellow (72%)
- Blue (75%)



- Cyan (0%)
- Magenta (10%)
- Yellow (6%)
- Black (20%)



- Cyan (20%)
- Magenta (28%)
- Yellow (25%)

Brightness & Saturation Gradients

These gradients show how the XYZ color 51.5568, 50.9241, 56.9812 changes by changing the brightness by 10 percent. The first figure shows a shift by +10% for each color and the second figure -10%.

Similar to the brightness gradients but the following saturation gradients show a change of the XYZ color 51.5568, 50.9241, 56.9812 by changing the saturation by 10% instead.

■ 51.5568, 50.9241,
56.9812

■ 51.5568, 50.9241,
56.9812

383.0753,
390.2688, 430.8706

■ 36.8748, 36.1482,
40.5809

■ 91.6554, 91.5426,
101.9378

■ 25.2838, 24.5487,
27.6745

117.8027,
118.1539, 131.3312

■ 16.4185, 15.7411,
17.8435

148.5024,
149.4793, 165.8927

■ 9.9135, 9.3412,
10.6694

184.1199,
185.9029, 206.0408

■ 5.4034, 4.9644,
5.7337

225.0206,
227.8093, 252.1941

■ 2.5230, 2.2264,
2.6177

271.5699,

■ 0.9069, 0.7343,

275.5828, 304.7712

0.9015

324.1330,
329.6079, 364.1905

■ 0.0000, 0.0000,
0.0000

■ 51.5568, 50.9241,
56.9812

■ 51.5568, 50.9241,
56.9812

■ 46.3207, 42.5326,
48.8197

■ 57.5197, 60.5873,
65.9429

■ 41.7783, 35.3531,
41.4322

■ 64.2323, 71.5656,
75.7236

■ 37.9004, 29.3308,
34.7953

■ 71.7216, 83.9085,
86.3455

■ 34.6538, 24.4041,
28.8836

■ 76.5349, 90.7066,
96.6699

■ 32.0023, 20.5058,
23.6697

■ 78.4256, 91.4629,
106.6264

■ 29.9061, 17.5610,
19.1243

■ 78.7122, 91.5776,
108.1354

■ 28.3197, 15.4846,
15.2155

■ 27.1900, 14.1760,
11.9079

■ 26.4228, 13.4528,
9.1512

Harmonies

Analogous

The Analogous color harmony consists of three colors that are next to each other on the color wheel.



50.8517, 50.9241, 61.3870



51.5568, 50.9241, 56.9812



51.4020, 50.9241, 52.3983

Triad

The Triadic color harmony groups three colors that are evenly spaced from another and form a triangle on the color wheel.



51.5568, 50.9241, 56.9812



47.3250, 50.9241, 47.4460



46.4254, 50.9241, 62.6391

Complementary

The Complementary color scheme is a pair of colors which are on the opposite of each other on the color wheel.



51.5568, 50.9241, 56.9812



51.3258, 57.3630, 60.5944

Split Complementary

Split-complementary colors differ from the complementary color scheme. The scheme consists of three colors, the original color and two neighbors of the complement color.



45.5207, 50.9241, 58.6131



51.5568, 50.9241, 56.9812



46.0319, 50.9241, 49.9044

Square

The Square scheme is like the rectangle color scheme, but the four colors are evenly spaced on the color wheel.



51.5568, 50.9241, 56.9812



48.9344, 50.9241, 47.0637



45.3783, 50.9241, 53.9419



47.8732, 50.9241, 64.7726

Rectangle

The Rectangle color scheme consists of four colors that form a rectangle on the color wheel.



51.5568, 50.9241, 56.9812



50.8333, 50.9241, 49.8478



45.3783, 50.9241, 53.9419



46.0491, 50.9241, 61.4520

Sweetspot

The Sweet Spot groups the original color and five complimentary colors.



51.5582, 50.9263, 56.9823



91.9275, 94.9236, 104.2563



50.8064, 50.3788, 64.1739



19.5018, 20.0344, 22.0540



0.0000, 0.0000, 0.0000



20.3446, 21.4041, 23.3091

Same Dimension

The Same Dimension uses a secret algorithm to generate beautiful new colors.



51.5582, 50.9263, 56.9823



83.2363, 80.8798, 91.0672



51.1143, 51.4181, 52.5807



11.3951, 11.2868, 12.6151



16.6653, 8.4767, 5.9559



0.8969, 0.4522, 0.5031

Inverse Universe

The Inverse Universe completely reimagines the original color for something new.



51.5582, 50.9263, 56.9823



83.2363, 80.8798, 91.0672



51.7885, 56.7925, 65.3601



11.3951, 11.2868, 12.6151



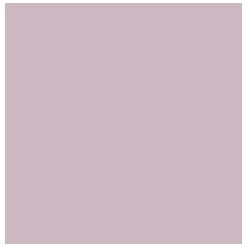
16.6653, 8.4767, 5.9559



0.8969, 0.4522, 0.5031

Previews

White Background



This preview shows how the XYZ color 51.5568, 50.9241, 56.9812 looks on a white background.

Color Contrast Check

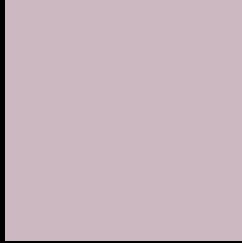
Large Text (above 18pt) WCAG AA × Fail

Any Text WCAG AA × Fail

Large Text (above 18pt) WCAG AAA × Fail

Any Text WCAG AAA × Fail

Black Background



This preview shows how the XYZ color 51.5568, 50.9241, 56.9812 looks on a black background.

Color Contrast Check

Large Text (above 18pt) WCAG AA ✓ Pass

Any Text WCAG AA ✓ Pass

Large Text (above 18pt) WCAG AAA ✓ Pass

Any Text WCAG AAA ✓ Pass

If you want to check with other color combinations, try the [Color Contrast Checker](#).

XYZ 51.5568, 50.9241, 56.9812

Background



This preview shows how black text looks on a background with the XYZ color 51.5568, 50.9241, 56.9812.



This preview shows how white text looks on a background with the XYZ color 51.5568, 50.9241,

Color Blindness Simulation

Color vision deficiency is a very complex topic, and I could not describe the different causes any better than Wikipedia does, so if you want to learn more, you should check out their [article about color blindness](#).

Dichromacy



Original Color

51.5568, 50.9241, 56.9812

Protanopia

49.2067, 50.9378, 58.2775

Deuteranopia

51.9015, 50.7946, 56.9380



Tritanopia

52.1884, 50.8773, 59.8930

Trichromacy



Original Color

51.5568, 50.9241, 56.9812

Protanomaly

50.1609, 51.1267, 57.6767

Deuteranomaly

51.6248, 50.6519, 56.9250

Tritanomaly

51.9607, 50.7862, 58.6939

Monochromacy



Original Color

51.5568, 50.9241, 56.9812

Achromatopsia

49.5206, 52.0996, 56.7364

Achromatomaly

50.1521, 51.4638, 56.5804

CSS Examples

Text

The CSS property to change the color of the text to XYZ 51.5568, 50.9241, 56.9812 is called "color". The color property can be set on classes, ids or directly on the HTML element.

This example shows how text in the color rgb(204, 184, 192) looks like.

```
.text, #text, p{  
    color:rgb(204, 184, 192)  
}
```

If you want to add a text shadow in that color use the text-shadow property, you can generate a text shadow directly with our [CSS Text Shadow Generator](#).

Here you see how black text with a 4 pixel rgb(204, 184, 192) colored shadow looks like.

```
.shadow{ text-shadow: 4px 4px 2px rgb(204, 184, 192) }
```

Border

The CSS property to change the border of an element to XYZ 51.5568, 50.9241, 56.9812 is called "border". The border property can be set on classes, ids or directly on the HTML element.

This example shows the color as border, it can be applied via the CSS property "border" or "border-color".

```
.border, #border, table{ border:4px solid rgb(204, 184, 192) }
```


If only the border color should be changed use the property border-color.

```
.border{ border-color:rgb(204, 184, 192) }
```

If you want to add a box shadow in that color use:

Here you see how a box with a 4 pixel rgb(204, 184, 192) colored shadow looks like.

```
.boxshadow{ -moz-box-shadow:4px 4px 4px  
4px rgb(204, 184, 192); -webkit-box-  
shadow:4px 4px 4px 4px rgb(204, 184, 192);  
box-shadow:4px 4px 4px 4px rgb(204, 184,  
192) }
```

Background

The CSS property to change the background color of an element to XYZ 51.5568, 50.9241, 56.9812 is called "background". The background property can be set on classes, ids or directly on the HTML element.

```
.background, #background, body{  
background: rgb(204, 184, 192) }
```

If only the background color should be changed can be used:

```
.background{ background-color: rgb(204,  
184, 192) }
```

This example shows the color as background, it is applied via the CSS property "background".

To optimize and compress your CSS code, you can use our [online CSS compressor and optimizer](#) based on csstidy. If you want to create a linear or radial gradient as background or border, check our [CSS Gradient Generator](#).

Hey! You found this booklet interesting? Support Converting Colors with the new Membership Option!

The pro membership hides all ads, plus gives you double the colors in the color bucket, and more awesome pro features!

[Learn more, Memberships starting at \\$2.50/m!](#)

**Follow me
on Twitter!**

@ConvertingColor