

Converting Colors

XYZ(51.4869, 49.6609, 48.7611)

Have a look what the booklet for
XYZ(51.4869, 49.6609, 48.7611)
contains.

XYZ(51.5966, 49.6007, 48.9739)	3
<i>Conversions</i>	4
<i>Details</i>	6
<i>Harmonies</i>	12
<i>Previews</i>	24
<i>Color Blindness Simulation</i>	28
<i>CSS Examples</i>	31

Color

**XYZ(51.5966, 49.6007,
48.9739)**

Conversions

Conversions Part 1

Format	Color
Hex	D5B3B2
RGB	213, 179, 178
RGB Percent	84%, 70%, 70%
CMY	0.1647, 0.2980, 0.3020
CMYK	0.00, 0.16, 0.16, 0.16
HSL	2°, 29%, 77%
HSV	2°, 16%, 84%
XYZ	51.5966, 49.6007, 48.9739
YIQ	189.0520, 20.5850, 6.8970

Conversions

Conversions Part 2

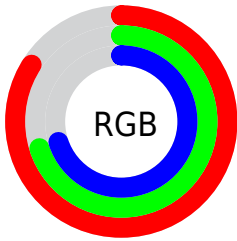
Format	Color
R _Y B	213, 179, 178
Decimal	14005170
CIE Lab	75.82, 12.09, 5.08
CIE LCh	76, 13.111, 22.791
Yxy	49.6007, 0.3436, 0.3303
Android (android.graphics.Color)	4292195250 (0xFFD5B3B2)
YUV	189.0520, -5.4486, 21.0024
Hunter-Lab	70.4278, 7.5236, 8.0705

Details

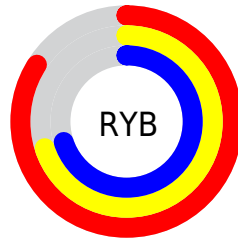
The XYZ color **51.5966, 49.6007, 48.9739** is a light color, and the websafe version is hex **CC9999**. A complement of this color would be **53.9135, 61.3547, 71.9525**, and the grayscale version is **48.4226, 50.9444, 55.4784**.

A 20% lighter version of the original color is **85.7996, 86.6172, 90.0386**, and **25.2631, 23.6715, 22.6396** is the 20% darker color. If you saturate the color by 10%, you get **45.7820, 41.1321, 37.2910**, and if you desaturate by 10%, it is **58.3682, 59.4509, 62.6153**.

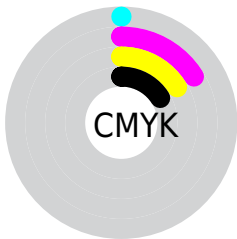
Distribution



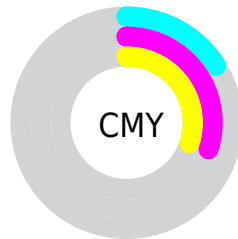
- Red (84%)
- Green (70%)
- Blue (70%)



- Red (84%)
- Yellow (70%)
- Blue (70%)



- Cyan (0%)
- Magenta (16%)
- Yellow (16%)
- Black (16%)





- Cyan (16%)
- Magenta (30%)
- Yellow (30%)

Brightness & Saturation Gradients

These gradients show how the XYZ color 51.5966, 49.6007, 48.9739 changes by changing the brightness by 10 percent. The first figure shows a shift by +10% for each color and the second figure -10%.


Similar to the brightness gradients but the following saturation gradients show a change of the XYZ color 51.5966, 49.6007, 48.9739 by changing the saturation by 10% instead.


 51.5966, 49.6007,
48.9739

 51.5966, 49.6007,
48.9739


383.2269,
385.1024, 399.2591

 36.9066, 35.0962,
34.2333

 91.7138, 89.5830,
90.0333

 25.3085, 23.7370,
22.7941


117.8717,
115.8296, 117.1892

 16.4370, 15.1387,
14.2377


148.5830,
146.7590, 149.3205

 9.9267, 8.9168,
8.1455

184.2129,
182.7556, 186.8460

 5.4123, 4.6869,
4.0991

225.1269,
224.2039, 230.1840

 2.5284, 2.0648,
1.6799

271.6903,

 0.9096, 0.6447,

271.4882, 279.7532

0.3469

324.2685,
324.9929, 335.9720

0.0000, 0.0000,
0.0000

51.5966, 49.6007,
48.9739

51.5966, 49.6007,
48.9739

45.7820, 41.1321,
37.2910

58.3682, 59.4509,
62.6153

40.8773, 33.9769,
27.4737

66.1329, 70.7334,
78.2958

36.8379, 28.0716,
19.4265

74.9298, 83.5047,
96.0956

33.6134, 23.3442,
13.0440

81.2508, 92.8863,
108.2542

31.1485, 19.7161,
8.2097

■ 29.3809, 17.0984,
4.7921

■ 28.2386, 15.3889,
2.6380

■ 27.6328, 14.4635,
1.5536

■ 27.5071, 14.2789,
1.3063

Harmonies

Analogous

The Analogous color harmony consists of three colors that are next to each other on the color wheel.



51.9466, 49.6007, 55.7080



51.5966, 49.6007, 48.9739



50.0343, 49.6007, 44.0095

Triad

The Triadic color harmony groups three colors that are evenly spaced from another and form a triangle on the color wheel.



51.5966, 49.6007, 48.9739



43.5101, 49.6007, 46.2922



46.5585, 49.6007, 68.4423

Complementary

The Complementary color scheme is a pair of colors which are on the opposite of each other on the color wheel.



51.5966, 49.6007, 48.9739



53.9135, 61.3547, 71.9525

Split Complementary

Split-complementary colors differ from the complementary color scheme. The scheme consists of three colors, the original color and two neighbors of the complement color.



44.3671, 49.6007, 65.4137



51.5966, 49.6007, 48.9739



42.6469, 49.6007, 52.3404

Square

The Square scheme is like the rectangle color scheme, but the four colors are evenly spaced on the color wheel.



51.5966, 49.6007, 48.9739



45.3522, 49.6007, 42.5568



42.9552, 49.6007, 59.3731



48.9823, 49.6007, 67.3456

Rectangle

The Rectangle color scheme consists of four colors that form a rectangle on the color wheel.



51.5966, 49.6007, 48.9739



48.5437, 49.6007, 42.1767



42.9552, 49.6007, 59.3731



45.7714, 49.6007, 67.8647

Sweetspot

The Sweet Spot groups the original color and five complimentary colors.



51.5980, 49.6029, 48.9749



89.2403, 91.5573, 97.1702



55.2979, 50.7621, 69.4474



18.9329, 19.3526, 20.4592



0.0000, 0.0000, 0.0000



20.3446, 21.4041, 23.3091

Same Dimension

The Same Dimension uses a secret algorithm to generate beautiful new colors.



51.5980, 49.6029, 48.9749



74.0813, 69.5041, 66.6379



55.2358, 56.8786, 50.1876



12.4515, 12.4773, 12.9128



16.8151, 8.7475, 0.8022



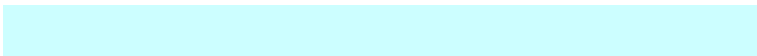
1.0245, 0.5482, 0.0518

Inverse Universe

The Inverse Universe completely reimagines the original color for something new.



53.9135, 61.3547, 71.9525



78.2469, 90.6475, 107.9804



49.8674, 53.2626, 70.6038



12.7602, 14.0439, 15.9757



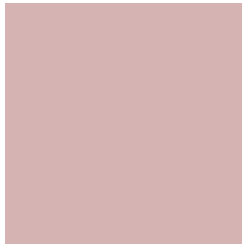
20.9634, 30.1886, 43.1752



1.2742, 1.8405, 2.6074

Previews

White Background



This preview shows how the XYZ color 51.5966, 49.6007, 48.9739 looks on a white background.

Color Contrast Check

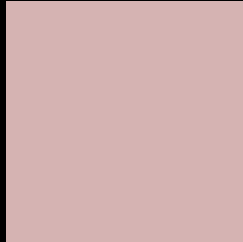
Large Text (above 18pt) WCAG AA × Fail

Any Text WCAG AA × Fail

Large Text (above 18pt) WCAG AAA × Fail

Any Text WCAG AAA × Fail

Black Background



This preview shows how the XYZ color 51.5966, 49.6007, 48.9739 looks on a black background.

Color Contrast Check

Large Text (above 18pt) WCAG AA ✓ Pass

Any Text WCAG AA ✓ Pass

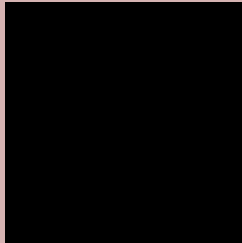
Large Text (above 18pt) WCAG AAA ✓ Pass

Any Text WCAG AAA ✓ Pass

If you want to check with other color combinations, try the [Color Contrast Checker](#).

XYZ 51.5966, 49.6007, 48.9739

Background



This preview shows how black text looks on a background with the XYZ color 51.5966, 49.6007, 48.9739.



This preview shows how white text looks on a background with the XYZ color 51.5966, 49.6007,

Color Blindness Simulation

Color vision deficiency is a very complex topic, and I could not describe the different causes any better than Wikipedia does, so if you want to learn more, you should check out their [article about color blindness](#).

Dichromacy



Original Color

51.5966, 49.6007, 48.9739

Protanopia

47.7406, 49.7017, 51.3332

Deuteranopia

50.8543, 49.8174, 49.0549



Tritanopia

53.1504, 49.6529, 56.0729

Trichromacy



Original Color

51.5966, 49.6007, 48.9739

Protanomaly

49.0934, 49.4825, 50.6796

Deuteranomaly

50.9355, 49.5585, 49.0006

Tritanomaly

52.5149, 49.6821, 53.2761

Monochromacy



Original Color

51.5966, 49.6007, 48.9739

Achromatopsia

48.3692, 50.8881, 55.4172

Achromatomaly

49.3946, 50.2065, 52.9864

CSS Examples

Text

The CSS property to change the color of the text to XYZ 51.5966, 49.6007, 48.9739 is called "color". The color property can be set on classes, ids or directly on the HTML element.

This example shows how text in the color `rgb(213, 179, 178)` looks like.

```
.text, #text, p{  
    color:rgb(213, 179, 178)  
}
```

If you want to add a text shadow in that color use the text-shadow property, you can generate a text shadow directly with our [CSS Text Shadow Generator](#).

Here you see how black text with a 4 pixel rgb(213, 179, 178) colored shadow looks like.

```
.shadow{ text-shadow: 4px 4px 2px rgb(213, 179, 178) }
```

Border

The CSS property to change the border of an element to XYZ 51.5966, 49.6007, 48.9739 is called "border". The border property can be set on classes, ids or directly on the HTML element.

This example shows the color as border, it can be applied via the CSS property "border" or "border-color".

```
.border, #border, table{ border:4px solid rgb(213, 179, 178) }
```


If only the border color should be changed use the property `border-color`.

```
.border{ border-color:rgb(213, 179, 178) }
```

If you want to add a box shadow in that color use:

Here you see how a box with a 4 pixel `rgb(213, 179, 178)` colored shadow looks like.

```
.boxshadow{ -moz-box-shadow:4px 4px 4px  
4px rgb(213, 179, 178); -webkit-box-  
shadow:4px 4px 4px 4px rgb(213, 179, 178);  
box-shadow:4px 4px 4px 4px rgb(213, 179,  
178) }
```

Background

The CSS property to change the background color of an element to XYZ 51.5966, 49.6007, 48.9739 is called "background". The background property can be set on classes, ids or directly on the HTML element.

```
.background, #background, body{  
background: rgb(213, 179, 178) }
```

If only the background color should be changed can be used:

```
.background{ background-color: rgb(213,  
179, 178) }
```

This example shows the color as background, it is applied via the CSS property "background".

To optimize and compress your CSS code, you can use our [online CSS compressor and optimizer](#) based on csstidy. If you want to create a linear or radial gradient as background or border, check our [CSS Gradient Generator](#).

Hey! You found this booklet interesting? Support Converting Colors with the new Membership Option!

The pro membership hides all ads, plus gives you double the colors in the color bucket, and more awesome pro features!

[Learn more, Memberships starting at \\$2.50/m!](#)

**Follow me
on Twitter!**

@ConvertingColor