

Converting Colors

XYZ(51.5085, 49.8539, 49.0275)

Have a look what the booklet for
XYZ(51.5085, 49.8539, 49.0275)
contains.

XYZ(51.5085, 49.8539, 49.0275)	3
<i>Conversions</i>	4
<i>Details</i>	6
<i>Harmonies</i>	12
<i>Previews</i>	24
<i>Color Blindness Simulation</i>	28
<i>CSS Examples</i>	31

Color

**XYZ(51.5085, 49.8539,
49.0275)**

Conversions

Conversions Part 1

Format	Color
Hex	D4B4B2
RGB	212, 180, 178
RGB Percent	83%, 71%, 70%
CMY	0.1686, 0.2941, 0.3020
CMYK	0.00, 0.15, 0.16, 0.17
HSL	4°, 28%, 76%
HSV	4°, 16%, 83%
XYZ	51.5085, 49.8539, 49.0275
YIQ	189.3400, 19.7140, 6.1620

Conversions

Conversions Part 2

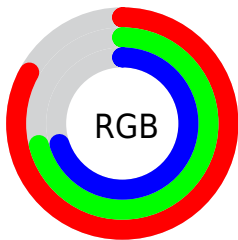
Format	Color
R _Y B	212, 180, 178
Decimal	13939890
CIE Lab	75.98, 11.18, 5.29
CIE LCh	76, 12.372, 25.325
Yxy	49.8539, 0.3425, 0.3315
Android (android.graphics.Color)	4292129970 (0xFFD4B4B2)
YUV	189.3400, -5.5906, 19.8728
Hunter-Lab	70.6073, 6.6542, 8.2560

Details

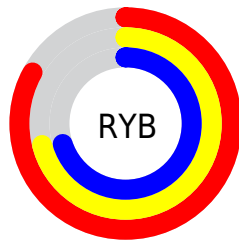
The XYZ color **51.5085, 49.8539, 49.0275** is a light color, and the websafe version is hex **CC9999**. A complement of this color would be **53.2900, 60.3103, 71.1201**, and the grayscale version is **48.5887, 51.1191, 55.6687**.

A 20% lighter version of the original color is **86.0867, 87.1914, 90.1343**, and **25.1957, 23.8275, 22.6733** is the 20% darker color. If you saturate the color by 10%, you get **45.8007, 41.5852, 37.4222**, and if you desaturate by 10%, it is **58.1278, 59.4181, 62.5607**.

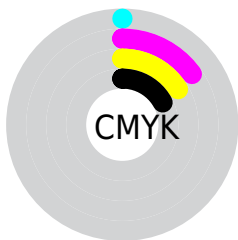
Distribution



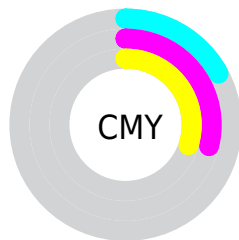
- Red (83%)
- Green (71%)
- Blue (70%)



- Red (83%)
- Yellow (71%)
- Blue (70%)



- Cyan (0%)
- Magenta (15%)
- Yellow (16%)
- Black (17%)



- Cyan (17%)
- Magenta (29%)
- Yellow (30%)

Brightness & Saturation Gradients


These gradients show how the XYZ color 51.5085, 49.8539, 49.0275 changes by changing the brightness by 10 percent. The first figure shows a shift by +10% for each color and the second figure -10%.


Similar to the brightness gradients but the following saturation gradients show a change of the XYZ color 51.5085, 49.8539, 49.0275 by changing the saturation by 10% instead.

 51.5085, 49.8539,
49.0275

 51.5085, 49.8539,
49.0275


382.8914,
386.0943, 399.4762

 36.8361, 35.2973,
34.2755


 91.5845, 89.9584,
90.1137

 25.2537, 23.8920,
22.8263


117.7189,
116.2751, 117.2850

 16.3959, 15.2535,
14.2612


148.4046,
147.2806, 149.4332

 9.8974, 8.9975,
8.1617

184.0071,
183.3593, 186.9768

 5.3927, 4.7396,
4.1094

224.8916,
224.8956, 230.3344

 2.5166, 2.0953,
1.6855

271.4236,

 0.9036, 0.6620,

272.2740, 279.9244

0.3508

323.9684,
325.8788, 336.1655

0.0000, 0.0000,
0.0000

51.5085, 49.8539,
49.0275

51.5085, 49.8539,
49.0275

45.8007, 41.5852,
37.4222

58.1278, 59.4181,
62.5607

40.9605, 34.5499,
27.6542

65.6917, 70.3230,
78.1007

36.9466, 28.6910,
19.6302

74.2368, 82.6201,
95.7256

33.7129, 23.9443,
13.2475

80.9616, 92.7371,
108.2407

31.2084, 20.2393,
8.3928

■ 29.3764, 17.4978,
4.9381

■ 28.1515, 15.6302,
2.7349

■ 27.4549, 14.5301,
1.5988

■ 27.2891, 14.2722,
1.3165

Harmonies

Analogous

The Analogous color harmony consists of three colors that are next to each other on the color wheel.



51.9448, 49.8539, 55.3246



51.5085, 49.8539, 49.0275



49.9535, 49.8539, 44.4905

Triad

The Triadic color harmony groups three colors that are evenly spaced from another and form a triangle on the color wheel.



51.5085, 49.8539, 49.0275



43.8293, 49.8539, 47.3706



47.0240, 49.8539, 67.9546

Complementary

The Complementary color scheme is a pair of colors which are on the opposite of each other on the color wheel.



51.5085, 49.8539, 49.0275



53.2900, 60.3103, 71.1201

Split Complementary

Split-complementary colors differ from the complementary color scheme. The scheme consists of three colors, the original color and two neighbors of the complement color.



44.9054, 49.8539, 65.4150



51.5085, 49.8539, 49.0275



43.0995, 49.8539, 53.2534

Square

The Square scheme is like the rectangle color scheme, but the four colors are evenly spaced on the color wheel.



51.5085, 49.8539, 49.0275



45.5124, 49.8539, 43.5897



43.4870, 49.8539, 59.9000



49.3076, 49.8539, 66.5947

Rectangle

The Rectangle color scheme consists of four colors that form a rectangle on the color wheel.



51.5085, 49.8539, 49.0275



48.5174, 49.8539, 42.8967



43.4870, 49.8539, 59.9000



46.2697, 49.8539, 67.5232

Sweetspot

The Sweet Spot groups the original color and five complimentary colors.



51.5099, 49.8561, 49.0285



89.3556, 91.7879, 97.2087



54.7426, 50.5066, 68.0329



18.9608, 19.4084, 20.4685



0.0000, 0.0000, 0.0000



20.3446, 21.4041, 23.3091

Same Dimension

The Same Dimension uses a secret algorithm to generate beautiful new colors.



51.5099, 49.8561, 49.0285



75.3476, 71.5431, 68.5814



55.0860, 57.0084, 50.2206



12.4814, 12.5370, 12.9228



16.8712, 8.8597, 0.8209



1.0387, 0.5767, 0.0566

Inverse Universe

The Inverse Universe completely reimagines the original color for something new.



53.2900, 60.3103, 71.1201



78.5124, 90.1323, 107.8670



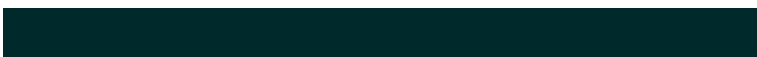
49.3807, 52.4918, 69.8171



12.7266, 13.9766, 15.9645



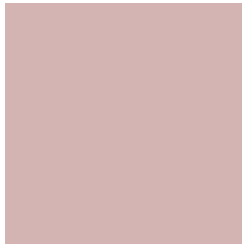
20.0430, 28.3478, 42.8685



1.2284, 1.7487, 2.5921

Previews

White Background



This preview shows how the XYZ color 51.5085, 49.8539, 49.0275 looks on a white background.

Color Contrast Check

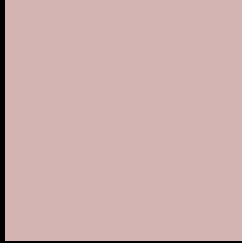
Large Text (above 18pt) WCAG AA × Fail

Any Text WCAG AA × Fail

Large Text (above 18pt) WCAG AAA × Fail

Any Text WCAG AAA × Fail

Black Background



This preview shows how the XYZ color 51.5085, 49.8539, 49.0275 looks on a black background.

Color Contrast Check

Large Text (above 18pt) WCAG AA ✓ Pass

Any Text WCAG AA ✓ Pass

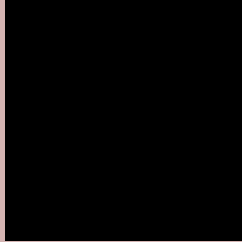
Large Text (above 18pt) WCAG AAA ✓ Pass

Any Text WCAG AAA ✓ Pass

If you want to check with other color combinations, try the [Color Contrast Checker](#).

XYZ 51.5085, 49.8539, 49.0275

Background



This preview shows how black text looks on a background with the XYZ color 51.5085, 49.8539, 49.0275.



This preview shows how white text looks on a background with the XYZ color 51.5085, 49.8539,

49.0275.

Color Blindness Simulation

Color vision deficiency is a very complex topic, and I could not describe the different causes any better than Wikipedia does, so if you want to learn more, you should check out their [article about color blindness](#).

Dichromacy



Original Color

51.5085, 49.8539, 49.0275

Protanopia

47.9520, 50.1245, 51.4036

Deuteranopia

50.8543, 49.8174, 49.0549



Tritanopia

53.1664, 49.9427, 56.7069

Trichromacy



Original Color

51.5085, 49.8539, 49.0275

Protanomaly

49.0342, 49.7593, 50.7362

Deuteranomaly

51.1381, 49.9637, 49.0682

Tritanomaly

52.5303, 49.9742, 53.8910

Monochromacy



Original Color

51.5085, 49.8539, 49.0275

Achromatopsia

48.3692, 50.8881, 55.4172

Achromatomaly

49.3418, 50.4909, 53.0441

CSS Examples

Text

The CSS property to change the color of the text to XYZ 51.5085, 49.8539, 49.0275 is called "color". The color property can be set on classes, ids or directly on the HTML element.

This example shows how text in the color `rgb(212, 180, 178)` looks like.

```
.text, #text, p{  
    color:rgb(212, 180, 178)  
}
```

If you want to add a text shadow in that color use the text-shadow property, you can generate a text shadow directly with our [CSS Text Shadow Generator](#).

Here you see how black text with a 4 pixel rgb(212, 180, 178) colored shadow looks like.

```
.shadow{ text-shadow: 4px 4px 2px rgb(212, 180, 178) }
```

Border

The CSS property to change the border of an element to XYZ 51.5085, 49.8539, 49.0275 is called "border". The border property can be set on classes, ids or directly on the HTML element.

This example shows the color as border, it can be applied via the CSS property "border" or "border-color".

```
.border, #border, table{ border:4px solid rgb(212, 180, 178) }
```


If only the border color should be changed use the property `border-color`.

```
.border{ border-color:rgb(212, 180, 178) }
```

If you want to add a box shadow in that color use:

Here you see how a box with a 4 pixel `rgb(212, 180, 178)` colored shadow looks like.

```
.boxshadow{ -moz-box-shadow:4px 4px 4px  
4px rgb(212, 180, 178); -webkit-box-  
shadow:4px 4px 4px 4px rgb(212, 180, 178);  
box-shadow:4px 4px 4px 4px rgb(212, 180,  
178) }
```

Background

The CSS property to change the background color of an element to XYZ 51.5085, 49.8539, 49.0275 is called "background". The background property can be set on classes, ids or directly on the HTML element.

```
.background, #background, body{  
background: rgb(212, 180, 178) }
```

If only the background color should be changed can be used:

```
.background{ background-color: rgb(212,  
180, 178) }
```

This example shows the color as background, it is applied via the CSS property "background".

To optimize and compress your CSS code, you can use our [online CSS compressor and optimizer](#) based on csstidy. If you want to create a linear or radial gradient as background or border, check our [CSS Gradient Generator](#).

Hey! You found this booklet interesting? Support Converting Colors with the new Membership Option!

The pro membership hides all ads, plus gives you double the colors in the color bucket, and more awesome pro features!

[Learn more, Memberships starting at \\$2.50/m!](#)

**Follow me
on Twitter!**

@ConvertingColor