

Converting Colors

XYZ(51.5533, 51.3764, 41.3515)

Have a look what the booklet for
XYZ(51.5533, 51.3764, 41.3515)
contains.

XYZ(51.3936, 51.1858, 41.3535)	3
<i>Conversions</i>	4
<i>Details</i>	6
<i>Harmonies</i>	12
<i>Previews</i>	24
<i>Color Blindness Simulation</i>	28
<i>CSS Examples</i>	31

Color

**XYZ(51.3936, 51.1858,
41.3535)**

Conversions

Conversions Part 1

Format	Color
Hex	D6B8A2
RGB	214, 184, 162
RGB Percent	84%, 72%, 64%
CMY	0.1608, 0.2784, 0.3647
CMYK	0.00, 0.14, 0.24, 0.16
HSL	25°, 39%, 74%
HSV	25°, 24%, 84%
XYZ	51.3936, 51.1858, 41.3535
YIQ	190.4620, 24.9420, -0.4820

Conversions

Conversions Part 2

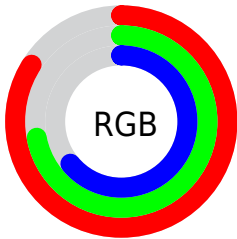
Format	Color
RYB	214, 200, 162
Decimal	14071970
CIELab	76.79, 7.38, 15.15
CIELCh	77, 16.850, 64.025
Yxy	51.1858, 0.3571, 0.3556
Android (android.graphics.Color)	4292262050 (0xFFD6B8A2)
YUV	190.4620, -14.0318, 20.6428
Hunter-Lab	71.5443, 3.0225, 15.8106

Details

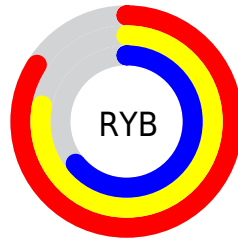
The XYZ color **51.3936, 51.1858, 41.3535** is a light color, and the websafe version is hex **CC9999**. A complement of this color would be **45.8870, 50.2341, 70.8961**, and the grayscale version is **49.2795, 51.8459, 56.4602**.

A 20% lighter version of the original color is **84.9245, 88.5899, 78.2692**, and **25.2288, 24.7293, 18.1954** is the 20% darker color. If you saturate the color by 10%, you get **47.1978, 45.5837, 31.3550**, and if you desaturate by 10%, it is **56.1396, 57.3696, 53.1337**.

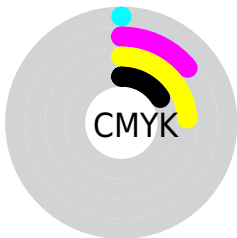
Distribution



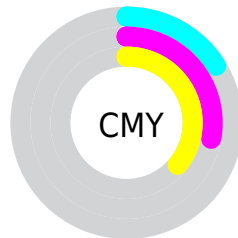
- Red (84%)
- Green (72%)
- Blue (64%)



- Red (84%)
- Yellow (78%)
- Blue (64%)



- Cyan (0%)
- Magenta (14%)
- Yellow (24%)
- Black (16%)





- Cyan (16%)
- Magenta (28%)
- Yellow (36%)

Brightness & Saturation Gradients


These gradients show how the XYZ color 51.3936, 51.1858, 41.3535 changes by changing the brightness by 10 percent. The first figure shows a shift by +10% for each color and the second figure -10%.


Similar to the brightness gradients but the following saturation gradients show a change of the XYZ color 51.3936, 51.1858, 41.3535 by changing the saturation by 10% instead.


 51.3936, 51.1858,
41.3535


 51.3936, 51.1858,
41.3535


382.4536,
391.2852, 367.5162

 36.7443, 36.3565,
28.2736


 91.4158, 91.9294,
78.4797

 25.1823, 24.7097,
18.2912


 117.5195,
118.6124, 103.3631

 16.3424, 15.8609,
10.9876

148.1719,
150.0155, 133.0182

 9.8591, 9.4258,
5.9445

183.7385,
186.5230, 167.8633

 5.3672, 5.0199,
2.7431

224.5846,
228.5193, 208.3172

 2.5012, 2.2590,
0.9650

271.0756,

 0.8959, 0.7519,

276.3889, 254.7982

0.0000

323.5768,
330.5160, 307.7251

0.0000, 0.0000,
0.0000

51.3936, 51.1858,
41.3535

51.3936, 51.1858,
41.3535

47.1978, 45.5837,
31.3550

56.1396, 57.3696,
53.1337

43.5262, 40.5384,
23.0468

61.4526, 64.1453,
66.7744

40.3563, 36.0332,
16.3343

67.3533, 71.5313,
82.3536

37.6623, 32.0480,
11.1117

73.8604, 79.5434,
99.9437

35.4157, 28.5610,
7.2608

78.6543, 87.2616,
107.3054

■ 33.5841, 25.5483,
4.6446

■ 81.5416, 93.0362,
108.2678

■ 32.1292, 22.9831,
3.0971

■ 31.4350, 21.7029,
2.5323

Harmonies

Analogous

The Analogous color harmony consists of three colors that are next to each other on the color wheel.



53.9266, 51.1858, 46.4484



51.3936, 51.1858, 41.3535



48.2203, 51.1858, 39.9474

Triad

The Triadic color harmony groups three colors that are evenly spaced from another and form a triangle on the color wheel.



51.3936, 51.1858, 41.3535



42.7711, 51.1858, 56.9778



52.1729, 51.1858, 71.6384

Complementary

The Complementary color scheme is a pair of colors which are on the opposite of each other on the color wheel.



51.3936, 51.1858, 41.3535



45.8870, 50.2341, 70.8961

Split Complementary

Split-complementary colors differ from the complementary color scheme. The scheme consists of three colors, the original color and two neighbors of the complement color.



49.0834, 51.1858, 75.2089



51.3936, 51.1858, 41.3535



43.7304, 51.1858, 66.1782

Square

The Square scheme is like the rectangle color scheme, but the four colors are evenly spaced on the color wheel.



51.3936, 51.1858, 41.3535



43.3296, 51.1858, 48.3703



46.0069, 51.1858, 73.1096



54.3902, 51.1858, 63.8065

Rectangle

The Rectangle color scheme consists of four colors that form a rectangle on the color wheel.



51.3936, 51.1858, 41.3535



46.1899, 51.1858, 41.1462



46.0069, 51.1858, 73.1096



51.1971, 51.1858, 73.4135

Sweetspot

The Sweet Spot groups the original color and five complimentary colors.



51.3950, 51.1881, 41.3546



89.1108, 92.5088, 93.3950



50.2037, 43.9579, 55.9021



18.9681, 19.6670, 19.7186



0.0000, 0.0000, 0.0000



20.3446, 21.4041, 23.3091

Same Dimension

The Same Dimension uses a secret algorithm to generate beautiful new colors.



51.3950, 51.1881, 41.3546



73.2150, 71.8570, 53.7539



57.2178, 62.8337, 43.2955



12.8509, 13.2760, 13.0459



19.0986, 13.3144, 1.5633



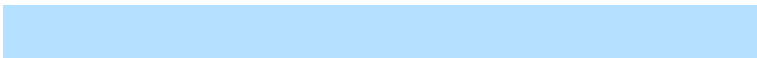
1.2329, 0.9650, 0.1213

Inverse Universe

The Inverse Universe completely reimagines the original color for something new.



45.8870, 50.2341, 70.8961



63.6947, 70.2037, 104.8013



40.7353, 39.9308, 69.1789



12.3315, 13.1864, 15.8328



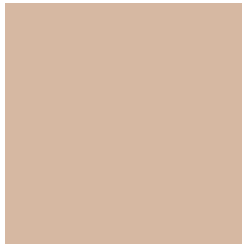
11.7559, 11.7736, 40.1061



0.7902, 0.8725, 2.4461

Previews

White Background



This preview shows how the XYZ color 51.3936, 51.1858, 41.3535 looks on a white background.

Color Contrast Check

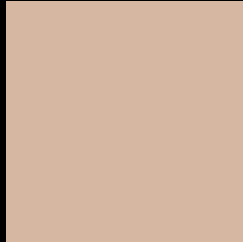
Large Text (above 18pt) WCAG AA × Fail

Any Text WCAG AA × Fail

Large Text (above 18pt) WCAG AAA × Fail

Any Text WCAG AAA × Fail

Black Background



This preview shows how the XYZ color 51.3936, 51.1858, 41.3535 looks on a black background.

Color Contrast Check

Large Text (above 18pt) WCAG AA ✓ Pass

Any Text WCAG AA ✓ Pass

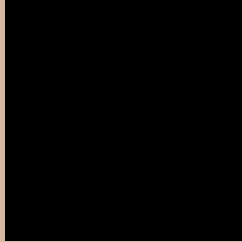
Large Text (above 18pt) WCAG AAA ✓ Pass

Any Text WCAG AAA ✓ Pass

If you want to check with other color combinations, try the [Color Contrast Checker](#).

XYZ 51.3936, 51.1858, 41.3535

Background



This preview shows how black text looks on a background with the XYZ color 51.3936, 51.1858, 41.3535.



This preview shows how white text looks on a background with the XYZ color 51.3936, 51.1858,

41.3535.

Color Blindness Simulation

Color vision deficiency is a very complex topic, and I could not describe the different causes any better than Wikipedia does, so if you want to learn more, you should check out their [article about color blindness](#).

Dichromacy



Original Color

51.3936, 51.1858, 41.3535

Protanopia

48.5423, 51.2539, 42.9319

Deuteranopia

52.3685, 51.3810, 41.3398



Tritanopia

54.6592, 50.9959, 57.4144

Trichromacy



Original Color

51.3936, 51.1858, 41.3535

Protanomaly

49.3730, 51.0584, 42.3750

Deuteranomaly

52.0703, 51.2273, 41.3259

Tritanomaly

53.5826, 51.1769, 51.3100

Monochromacy



Original Color

51.3936, 51.1858, 41.3535

Achromatopsia

48.9429, 51.4918, 56.0745

Achromatomaly

49.7746, 51.4038, 50.4785

CSS Examples

Text

The CSS property to change the color of the text to XYZ 51.3936, 51.1858, 41.3535 is called "color". The color property can be set on classes, ids or directly on the HTML element.

This example shows how text in the color rgb(214, 184, 162) looks like.

```
.text, #text, p{  
    color:rgb(214, 184, 162)  
}
```

If you want to add a text shadow in that color use the text-shadow property, you can generate a text shadow directly with our [CSS Text Shadow Generator](#).

Here you see how black text with a 4 pixel rgb(214, 184, 162) colored shadow looks like.

```
.shadow{ text-shadow: 4px 4px 2px rgb(214, 184, 162) }
```

Border

The CSS property to change the border of an element to XYZ 51.3936, 51.1858, 41.3535 is called "border". The border property can be set on classes, ids or directly on the HTML element.

This example shows the color as border, it can be applied via the CSS property "border" or "border-color".

```
.border, #border, table{ border:4px solid rgb(214, 184, 162) }
```


If only the border color should be changed use the property `border-color`.

```
.border{ border-color:rgb(214, 184, 162) }
```

If you want to add a box shadow in that color use:

Here you see how a box with a 4 pixel `rgb(214, 184, 162)` colored shadow looks like.

```
.boxshadow{ -moz-box-shadow:4px 4px 4px  
4px rgb(214, 184, 162); -webkit-box-  
shadow:4px 4px 4px 4px rgb(214, 184, 162);  
box-shadow:4px 4px 4px 4px rgb(214, 184,  
162) }
```

Background

The CSS property to change the background color of an element to XYZ 51.3936, 51.1858, 41.3535 is called "background". The background property can be set on classes, ids or directly on the HTML element.

```
.background, #background, body{  
background: rgb(214, 184, 162) }
```

If only the background color should be changed can be used:

```
.background{ background-color: rgb(214,  
184, 162) }
```

This example shows the color as background, it is applied via the CSS property "background".

To optimize and compress your CSS code, you can use our [online CSS compressor and optimizer](#) based on csstidy. If you want to create a linear or radial gradient as background or border, check our [CSS Gradient Generator](#).

Hey! You found this booklet interesting? Support Converting Colors with the new Membership Option!

The pro membership hides all ads, plus gives you double the colors in the color bucket, and more awesome pro features!

[Learn more, Memberships starting at \\$2.50/m!](#)

**Follow me
on Twitter!**

@ConvertingColor