

Converting Colors

XYZ(51.6653, 49.9415, 56.7754)

Have a look what the booklet for
XYZ(51.6653, 49.9415, 56.7754)
contains.

XYZ(51.7704, 50.1189, 56.8145)	3
<i>Conversions</i>	4
<i>Details</i>	6
<i>Harmonies</i>	12
<i>Previews</i>	24
<i>Color Blindness Simulation</i>	28
<i>CSS Examples</i>	31

Color

**XYZ(51.7704, 50.1189,
56.8145)**

Conversions

Conversions Part 1

Format	Color
Hex	CFB5C0
RGB	207, 181, 192
RGB Percent	81%, 71%, 75%
CMY	0.1882, 0.2902, 0.2471
CMYK	0.00, 0.13, 0.07, 0.19
HSL	335°, 21%, 76%
HSV	335°, 13%, 81%
XYZ	51.7704, 50.1189, 56.8145
YIQ	190.0280, 11.9650, 8.9330

Conversions

Conversions Part 2

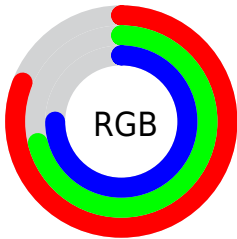
Format	Color
R _Y B	207, 181, 192
Decimal	13612480
CIE Lab	76.14, 11.17, -2.15
CIE LCh	76, 11.376, 349.117
Yxy	50.1189, 0.3262, 0.3158
Android (android.graphics.Color)	4291802560 (0xFFCFB5C0)
YUV	190.0280, 0.9722, 14.8844
Hunter-Lab	70.7947, 6.6419, 1.9746

Details

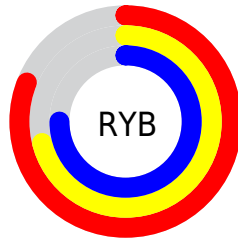
The XYZ color **51.7704, 50.1189, 56.8145** is a light color, and the websafe version is hex **CCCCCC**. A complement of this color would be **51.3346, 58.4362, 60.8010**, and the grayscale version is **48.9506, 51.4998, 56.0833**.

A 20% lighter version of the original color is **88.4675, 88.6057, 101.2468**, and **25.5162, 24.0747, 27.7281** is the 20% darker color. If you saturate the color by 10%, you get **46.6002, 41.8106, 48.8248**, and if you desaturate by 10%, it is **57.6763, 59.7253, 65.5805**.

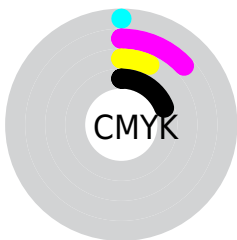
Distribution



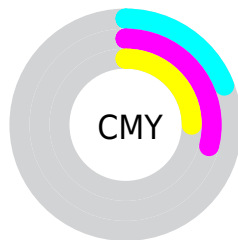
- Red (81%)
- Green (71%)
- Blue (75%)



- Red (81%)
- Yellow (71%)
- Blue (75%)



- Cyan (0%)
- Magenta (13%)
- Yellow (7%)
- Black (19%)



- Cyan (19%)
- Magenta (29%)
- Yellow (25%)

Brightness & Saturation Gradients

These gradients show how the XYZ color 51.7704, 50.1189, 56.8145 changes by changing the brightness by 10 percent. The first figure shows a shift by +10% for each color and the second figure -10%.

Similar to the brightness gradients but the following saturation gradients show a change of the XYZ color 51.7704, 50.1189, 56.8145 by changing the saturation by 10% instead.

■ 51.7704, 50.1189,
56.8145

■ 51.7704, 50.1189,
56.8145

383.8881,
387.1307, 430.2281

■ 37.0456, 35.5079,
40.4480

■ 91.9688, 90.3510,
101.6921

■ 25.4167, 24.0544,
27.5715

118.1731,
116.7409, 131.0403

■ 16.5181, 15.3740,
17.7667

148.9346,
147.8259, 165.5527

■ 9.9847, 9.0823,
10.6149

184.6187,
183.9903, 205.6480

■ 5.4510, 4.7949,
5.6976

225.5908,
225.6186, 251.7446

■ 2.5517, 2.1274,
2.5963

272.2161,

■ 0.9214, 0.6800,

273.0952, 304.2611

0.8905

324.8601,
326.8044, 363.6161

■ 0.0000, 0.0000,
0.0000

■ 51.7704, 50.1189,
56.8145

■ 51.7704, 50.1189,
56.8145

■ 46.6002, 41.8106,
48.8248

■ 57.6763, 59.7253,
65.5805

■ 42.1313, 34.7378,
41.5857

■ 64.3417, 70.6757,
75.1412

■ 38.3330, 28.8425,
35.0746

■ 71.7949, 83.0219,
85.5182

■ 35.1705, 24.0597,
29.2663

■ 77.1874, 91.0636,
95.7733

■ 32.6059, 20.3178,
24.1342

■ 79.0189, 91.7961,
105.4175

■ 30.5966, 17.5368,
19.6492

■ 79.5424, 92.0055,
108.1743

■ 29.0942, 15.6247,
15.7799

■ 28.0411, 14.4715,
12.4906

■ 27.4757, 13.9629,
10.3846

Harmonies

Analogous

The Analogous color harmony consists of three colors that are next to each other on the color wheel.



50.7988, 50.1189, 62.6093



51.7704, 50.1189, 56.8145



51.6098, 50.1189, 50.8211

Triad

The Triadic color harmony groups three colors that are evenly spaced from another and form a triangle on the color wheel.



51.7704, 50.1189, 56.8145



46.3085, 50.1189, 44.2268



45.0072, 50.1189, 63.9227

Complementary

The Complementary color scheme is a pair of colors which are on the opposite of each other on the color wheel.



51.7704, 50.1189, 56.8145



51.3346, 58.4362, 60.8010

Split Complementary

Split-complementary colors differ from the complementary color scheme. The scheme consists of three colors, the original color and two neighbors of the complement color.



43.8726, 50.1189, 58.5009



51.7704, 50.1189, 56.8145



44.6083, 50.1189, 47.2519

Square

The Square scheme is like the rectangle color scheme, but the four colors are evenly spaced on the color wheel.



51.7704, 50.1189, 56.8145



48.4136, 50.1189, 43.8492



43.7288, 50.1189, 52.3873



46.8678, 50.1189, 66.9118

Rectangle

The Rectangle color scheme consists of four colors that form a rectangle on the color wheel.



51.7704, 50.1189, 56.8145



50.8835, 50.1189, 47.5039



43.7288, 50.1189, 52.3873



44.5307, 50.1189, 62.3063

Sweetspot

The Sweet Spot groups the original color and five complimentary colors.



51.7718, 50.1211, 56.8156



90.9487, 93.2906, 102.9297



50.4838, 49.2552, 65.8785



19.3064, 19.7064, 21.7958



0.0000, 0.0000, 0.0000



20.3446, 21.4041, 23.3091

Same Dimension

The Same Dimension uses a secret algorithm to generate beautiful new colors.



51.7718, 50.1211, 56.8156



80.6864, 76.6361, 87.5778



50.9529, 50.3609, 50.7538



12.0133, 11.8900, 13.3456



17.3559, 8.8152, 6.7802



1.0097, 0.5086, 0.5859

Inverse Universe

The Inverse Universe completely reimagines the original color for something new.



51.7718, 50.1211, 56.8156



80.6864, 76.6361, 87.5778



52.2153, 58.1203, 67.4984



12.0133, 11.8900, 13.3456



17.3559, 8.8152, 6.7802



1.0097, 0.5086, 0.5859

Previews

White Background



This preview shows how the XYZ color 51.7704, 50.1189, 56.8145 looks on a white background.

Color Contrast Check

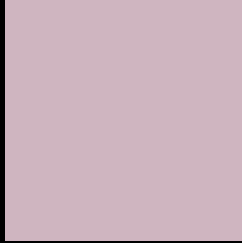
Large Text (above 18pt) WCAG AA × Fail

Any Text WCAG AA × Fail

Large Text (above 18pt) WCAG AAA × Fail

Any Text WCAG AAA × Fail

Black Background



This preview shows how the XYZ color 51.7704, 50.1189, 56.8145 looks on a black background.

Color Contrast Check

Large Text (above 18pt) WCAG AA ✓ Pass

Any Text WCAG AA ✓ Pass

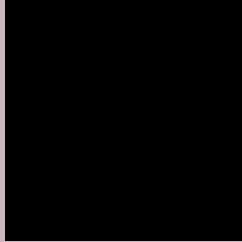
Large Text (above 18pt) WCAG AAA ✓ Pass

Any Text WCAG AAA ✓ Pass

If you want to check with other color combinations, try the [Color Contrast Checker](#).

XYZ 51.7704, 50.1189, 56.8145

Background



This preview shows how black text looks on a background with the XYZ color 51.7704, 50.1189, 56.8145.



This preview shows how white text looks on a background with the XYZ color 51.7704, 50.1189,

Color Blindness Simulation

Color vision deficiency is a very complex topic, and I could not describe the different causes any better than Wikipedia does, so if you want to learn more, you should check out their [article about color blindness](#).

Dichromacy



Original Color

51.7704, 50.1189, 56.8145

Protanopia

48.6069, 50.2996, 58.7767

Deuteranopia

51.1442, 50.0990, 56.8437



Tritanopia

52.1063, 50.2533, 58.5833

Trichromacy



Original Color

51.7704, 50.1189, 56.8145

Protanomaly

49.8515, 50.3287, 58.1259

Deuteranomaly

51.4192, 50.2408, 56.8565

Tritanomaly

51.9936, 50.2082, 57.9897

Monochromacy



Original Color

51.7704, 50.1189, 56.8145

Achromatopsia

48.9429, 51.4918, 56.0745

Achromatomaly

49.9392, 51.0380, 56.5095

CSS Examples

Text

The CSS property to change the color of the text to XYZ 51.7704, 50.1189, 56.8145 is called "color". The color property can be set on classes, ids or directly on the HTML element.

This example shows how text in the color `rgb(207, 181, 192)` looks like.

```
.text, #text, p{  
    color:rgb(207, 181, 192)  
}
```

If you want to add a text shadow in that color use the text-shadow property, you can generate a text shadow directly with our [CSS Text Shadow Generator](#).

Here you see how black text with a 4 pixel rgb(207, 181, 192) colored shadow looks like.

```
.shadow{ text-shadow: 4px 4px 2px rgb(207, 181, 192) }
```

Border

The CSS property to change the border of an element to XYZ 51.7704, 50.1189, 56.8145 is called "border". The border property can be set on classes, ids or directly on the HTML element.

This example shows the color as border, it can be applied via the CSS property "border" or "border-color".

```
.border, #border, table{ border:4px solid rgb(207, 181, 192) }
```


If only the border color should be changed use the property `border-color`.

```
.border{ border-color:rgb(207, 181, 192) }
```

If you want to add a box shadow in that color use:

Here you see how a box with a 4 pixel `rgb(207, 181, 192)` colored shadow looks like.

```
.boxshadow{ -moz-box-shadow:4px 4px 4px  
4px rgb(207, 181, 192); -webkit-box-  
shadow:4px 4px 4px 4px rgb(207, 181, 192);  
box-shadow:4px 4px 4px 4px rgb(207, 181,  
192) }
```

Background

The CSS property to change the background color of an element to XYZ 51.7704, 50.1189, 56.8145 is called "background". The background property can be set on classes, ids or directly on the HTML element.

```
.background, #background, body{  
background: rgb(207, 181, 192) }
```

If only the background color should be changed can be used:

```
.background{ background-color: rgb(207,  
181, 192) }
```

This example shows the color as background, it is applied via the CSS property "background".

To optimize and compress your CSS code, you can use our [online CSS compressor and optimizer](#) based on csstidy. If you want to create a linear or radial gradient as background or border, check our [CSS Gradient Generator](#).

Hey! You found this booklet interesting? Support Converting Colors with the new Membership Option!

The pro membership hides all ads, plus gives you double the colors in the color bucket, and more awesome pro features!

[Learn more, Memberships starting at \\$2.50/m!](#)

**Follow me
on Twitter!**

@ConvertingColor