

# Converting Colors

XYZ(51.7113, 50.6192, 46.5802)

Have a look what the booklet for  
XYZ(51.7113, 50.6192, 46.5802)  
contains.

<b>XYZ(51.7113, 50.6192, 46.5802)</b> .....	3
<b><i>Conversions</i></b> .....	4
<b><i>Details</i></b> .....	6
<b><i>Harmonies</i></b> .....	12
<b><i>Previews</i></b> .....	24
<b><i>Color Blindness Simulation</i></b> .....	28
<b><i>CSS Examples</i></b> .....	31

# Color

**XYZ(51.7113, 50.6192,  
46.5802)**

# Conversions

## Conversions Part 1

Format	Color
Hex	D5B6AD
RGB	213, 182, 173
RGB Percent	84%, 71%, 68%
CMY	0.1647, 0.2863, 0.3216
CMYK	0.00, 0.15, 0.19, 0.16
HSL	14°, 32%, 76%
HSV	14°, 19%, 84%
XYZ	51.7113, 50.6192, 46.5802
YIQ	190.2430, 21.3650, 3.7730

# Conversions

## Conversions Part 2

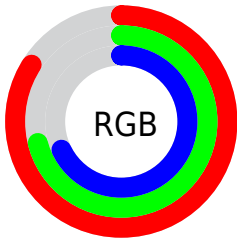
Format	Color
R <sub>Y</sub> B	213, 185, 173
Decimal	14005933
CIE Lab	76.45, 9.70, 8.69
CIE LCh	76, 13.025, 41.872
Yxy	50.6192, 0.3473, 0.3399
Android (android.graphics.Color)	4292196013 (0xFFD5B6AD)
YUV	190.2430, -8.5008, 19.9579
Hunter-Lab	71.1472, 5.2301, 10.9857

# Details

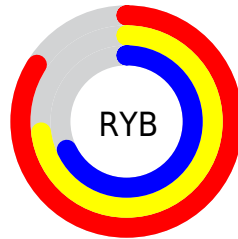
The XYZ color **51.7113, 50.6192, 46.5802** is a light color, and the websafe version is hex **CC9999**. A complement of this color would be **50.8361, 56.8725, 71.2491**, and the grayscale version is **49.1236, 51.6818, 56.2815**.

A 20% lighter version of the original color is **85.8181, 88.0105, 85.8634**, and **25.4020, 24.3501, 21.4504** is the 20% darker color. If you saturate the color by 10%, you get **46.6292, 43.4945, 35.5153**, and if you desaturate by 10%, it is **57.5232, 58.6768, 59.5106**.

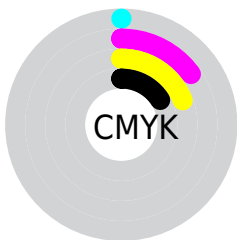
# Distribution



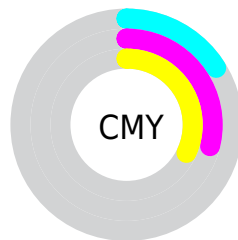
- Red (84%)
- Green (71%)
- Blue (68%)



- Red (84%)
- Yellow (73%)
- Blue (68%)



- Cyan (0%)
- Magenta (15%)
- Yellow (19%)
- Black (16%)




- Cyan (16%)
- Magenta (29%)
- Yellow (32%)


# Brightness & Saturation Gradients

These gradients show how the XYZ color 51.7113, 50.6192, 46.5802 changes by changing the brightness by 10 percent. The first figure shows a shift by +10% for each color and the second figure -10%.


Similar to the brightness gradients but the following saturation gradients show a change of the XYZ color 51.7113, 50.6192, 46.5802 by changing the saturation by 10% instead.





 51.7113, 50.6192,  
46.5802

 51.7113, 50.6192,  
46.5802


383.6633,  
389.0825, 389.4815

 36.9983, 35.9056,  
32.3519

 91.8821, 91.0916,  
86.4301

 25.3799, 24.3613,  
21.3634

118.0706,  
117.6193, 112.8887

 16.4905, 15.6019,  
13.1961


148.8151,  
148.8538, 144.2613

 9.9650, 9.2429,  
7.4314

184.4808,  
185.1795, 180.9663

 5.4378, 4.8999,  
3.6508

225.4331,  
226.9808, 223.4223

 2.5437, 2.1887,  
1.4358

272.0374,

 0.9174, 0.7138,

274.6422, 272.0478

0.1694

324.6590,  
328.5479, 327.2614

■ 0.0000, 0.0000,  
0.0000

■ 51.7113, 50.6192,  
46.5802

■ 51.7113, 50.6192,  
46.5802

■ 46.6292, 43.4945,  
35.5153

■ 57.5232, 58.6768,  
59.5106

■ 42.2436, 37.2620,  
26.2264

■ 64.0883, 67.6924,  
74.3841

■ 38.5243, 31.8881,  
18.6212

■ 71.4343, 77.6989,  
91.2777

■ 35.4375, 27.3347,  
12.5978

■ 79.0662, 88.5172,  
107.5260

■ 32.9462, 23.5602,  
8.0432

■ 81.2506, 92.8862,  
108.2542

■ 31.0095, 20.5197,  
4.8293

■ 29.5802, 18.1631,  
2.8056

■ 28.5939, 16.4300,  
1.7389

■ 28.4955, 16.2558,  
1.6358

# Harmonies

## Analogous

The Analogous color harmony consists of three colors that are next to each other on the color wheel.



52.8782, 50.6192, 52.3825



51.7113, 50.6192, 46.5802



49.5949, 50.6192, 43.2463

# Triad

The Triadic color harmony groups three colors that are evenly spaced from another and form a triangle on the color wheel.



51.7113, 50.6192, 46.5802



43.7662, 50.6192, 51.0177



49.0891, 50.6192, 69.4237

# Complementary

The Complementary color scheme is a pair of colors which are on the opposite of each other on the color wheel.



51.7113, 50.6192, 46.5802



50.8361, 56.8725, 71.2491

# Split Complementary

Split-complementary colors differ from the complementary color scheme. The scheme consists of three colors, the original color and two neighbors of the complement color.



46.6590, 50.6192, 68.9795



51.7113, 50.6192, 46.5802



43.6412, 50.6192, 57.9423

# Square

The Square scheme is like the rectangle color scheme, but the four colors are evenly spaced on the color wheel.



51.7113, 50.6192, 46.5802



45.0313, 50.6192, 45.6543



44.6838, 50.6192, 64.6350



51.3302, 50.6192, 65.8015



# Rectangle

The Rectangle color scheme consists of four colors that form a rectangle on the color wheel.



51.7113, 50.6192, 46.5802



47.9581, 50.6192, 42.6843



44.6838, 50.6192, 64.6350



48.2663, 50.6192, 69.7529

# Sweetspot

The Sweet Spot groups the original color and five complimentary colors.



51.7127, 50.6215, 46.5813



89.0174, 91.7209, 95.2168



53.3237, 48.4095, 63.8704



18.9183, 19.4461, 20.0756



0.0000, 0.0000, 0.0000



20.3446, 21.4041, 23.3091



# Same Dimension

The Same Dimension uses a secret algorithm to generate beautiful new colors.



51.7127, 50.6215, 46.5813



74.1800, 71.1340, 62.2542



56.0262, 59.2484, 48.0191



12.6478, 12.8697, 12.9782



17.4698, 10.0569, 1.0204



1.1169, 0.7330, 0.0826



# Inverse Universe

The Inverse Universe completely reimagines the original color for something new.



50.8361, 56.8725, 71.2491



72.5980, 82.3865, 106.6836



46.4542, 48.1086, 69.7885



12.5441, 13.6116, 15.9037



15.6407, 19.5432, 41.4010

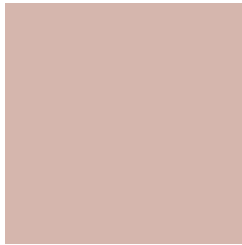


1.0029, 1.2978, 2.5170



# Previews

## White Background



This preview shows how the XYZ color 51.7113, 50.6192, 46.5802 looks on a white background.

## Color Contrast Check

Large Text (above 18pt) WCAG AA × Fail

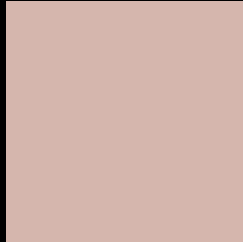
Any Text WCAG AA × Fail

Large Text (above 18pt) WCAG AAA × Fail

Any Text WCAG AAA × Fail



# Black Background



This preview shows how the XYZ color 51.7113, 50.6192, 46.5802 looks on a black background.

## Color Contrast Check

Large Text (above 18pt) WCAG AA ✓ Pass

Any Text WCAG AA ✓ Pass

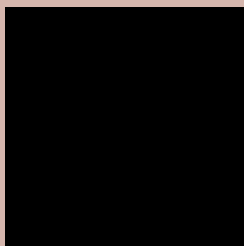
Large Text (above 18pt) WCAG AAA ✓ Pass

Any Text WCAG AAA ✓ Pass

If you want to check with other color combinations, try the [Color Contrast Checker](#).

# XYZ 51.7113, 50.6192, 46.5802

## Background



This preview shows how black text looks on a background with the XYZ color 51.7113, 50.6192, 46.5802.



This preview shows how white text looks on a background with the XYZ color 51.7113, 50.6192,



# Color Blindness Simulation

Color vision deficiency is a very complex topic, and I could not describe the different causes any better than Wikipedia does, so if you want to learn more, you should check out their [article about color blindness](#).

## Dichromacy



### Original Color

51.7113, 50.6192, 46.5802

### Protanopia

48.3254, 50.7031, 48.3140

### Deuteranopia

51.7113, 50.6192, 46.5802



## Tritanopia

53.7701, 50.5375, 57.3728

# Trichromacy



## Original Color

51.7113, 50.6192, 46.5802

## Protanomaly

49.6539, 50.7695, 47.7399

## Deuteranomaly

51.7113, 50.6192, 46.5802

## Tritanomaly

52.9157, 50.4838, 53.4098

# Monochromacy



## Original Color

51.7113, 50.6192, 46.5802

## Achromatopsia

48.9429, 51.4918, 56.0745

## Achromatomaly

49.7108, 51.0071, 52.5727

# CSS Examples

## Text

The CSS property to change the color of the text to XYZ 51.7113, 50.6192, 46.5802 is called "color". The color property can be set on classes, ids or directly on the HTML element.

This example shows how text in the color `rgb(213, 182, 173)` looks like.

```
.text, #text, p{  
    color:rgb(213, 182, 173)  
}
```

If you want to add a text shadow in that color use the text-shadow property, you can generate a text shadow directly with our [CSS Text Shadow Generator](#).

Here you see how black text with a 4 pixel rgb(213, 182, 173) colored shadow looks like.

```
.shadow{ text-shadow: 4px 4px 2px rgb(213, 182, 173) }
```

## Border

The CSS property to change the border of an element to XYZ 51.7113, 50.6192, 46.5802 is called "border". The border property can be set on classes, ids or directly on the HTML element.

This example shows the color as border, it can be applied via the CSS property "border" or "border-color".

```
.border, #border, table{ border:4px solid rgb(213, 182, 173) }
```



If only the border color should be changed use the property `border-color`.

```
.border{ border-color:rgb(213, 182, 173) }
```

If you want to add a box shadow in that color use:

Here you see how a box with a 4 pixel `rgb(213, 182, 173)` colored shadow looks like.

```
.boxshadow{ -moz-box-shadow:4px 4px 4px  
4px rgb(213, 182, 173); -webkit-box-  
shadow:4px 4px 4px 4px rgb(213, 182, 173);  
box-shadow:4px 4px 4px 4px rgb(213, 182,  
173) }
```

# Background

The CSS property to change the background color of an element to XYZ 51.7113, 50.6192, 46.5802 is called "background". The background property can be set on classes, ids or directly on the HTML element.

```
.background, #background, body{  
background: rgb(213, 182, 173) }
```

If only the background color should be changed can be used:

```
.background{ background-color: rgb(213,  
182, 173) }
```

This example shows the color as background, it is applied via the CSS property "background".

To optimize and compress your CSS code, you can use our [online CSS compressor and optimizer](#) based on csstidy. If you want to create a linear or radial gradient as background or border, check our [CSS Gradient Generator](#).

Hey! You found this booklet interesting? Support Converting Colors with the new Membership Option!

The pro membership hides all ads, plus gives you double the colors in the color bucket, and more awesome pro features!

**[Learn more, Memberships starting at \\$2.50/m!](#)**

**Follow me  
on Twitter!**

@ConvertingColor