

Converting Colors

XYZ(51.7428, 50.2030, 31.7684)

Have a look what the booklet for
XYZ(51.7428, 50.2030, 31.7684)
contains.

XYZ(51.5942, 49.9809, 31.7389)	3
<i>Conversions</i>	4
<i>Details</i>	6
<i>Harmonies</i>	12
<i>Previews</i>	24
<i>Color Blindness Simulation</i>	28
<i>CSS Examples</i>	31

Color

**XYZ(51.5942, 49.9809,
31.7389)**

Conversions

Conversions Part 1

Format	Color
Hex	E0B38C
RGB	224, 179, 140
RGB Percent	88%, 70%, 55%
CMY	0.1216, 0.2980, 0.4510
CMYK	0.00, 0.20, 0.37, 0.12
HSL	28°, 58%, 71%
HSV	28°, 37%, 88%
XYZ	51.5942, 49.9809, 31.7389
YIQ	188.0090, 39.3390, -2.5890

Conversions

Conversions Part 2

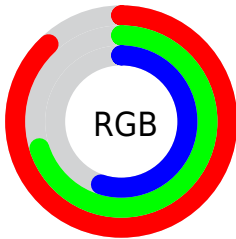
Format	Color
R_{YB}	224, 213, 140
Decimal	14726028
CIE _{Lab}	76.06, 11.07, 26.11
CIE _{LCh}	76, 28.361, 67.020
Yxy	49.9809, 0.3870, 0.3749
Android (android.graphics.Color)	4292916108 (0xFFE0B38C)
YUV	188.0090, -23.6684, 31.5641
Hunter-Lab	70.6972, 6.5477, 22.8703

Details

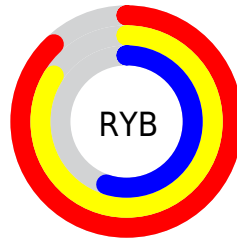
The XYZ color **51.5942, 49.9809, 31.7389** is a light color, and the websafe version is hex **FFCC99**. A complement of this color would be **41.6182, 45.6537, 77.1396**, and the grayscale version is **47.9207, 50.4163, 54.9033**.

A 20% lighter version of the original color is **80.6859, 84.5717, 63.1103**, and **25.2427, 23.8754, 12.9508** is the 20% darker color. If you saturate the color by 10%, you get **47.8069, 44.7858, 23.1405**, and if you desaturate by 10%, it is **55.9296, 55.7338, 42.1798**.

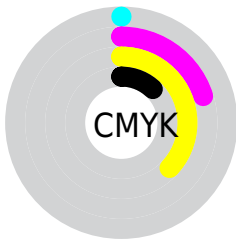
Distribution



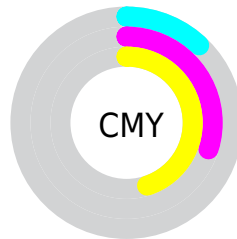
- Red (88%)
- Green (70%)
- Blue (55%)



- Red (88%)
- Yellow (84%)
- Blue (55%)



- Cyan (0%)
- Magenta (20%)
- Yellow (37%)
- Black (12%)



- Cyan (12%)
- Magenta (30%)
- Yellow (45%)

Brightness & Saturation Gradients

These gradients show how the XYZ color 51.5942, 49.9809, 31.7389 changes by changing the brightness by 10 percent. The first figure shows a shift by +10% for each color and the second figure -10%.

Similar to the brightness gradients but the following saturation gradients show a change of the XYZ color 51.5942, 49.9809, 31.7389 by changing the saturation by 10% instead.

51.5942, 49.9809,
31.7389

51.5942, 49.9809,
31.7389

383.2177,
386.5912, 324.3841

36.9047, 35.3982,
20.8990

91.7103, 90.1466,
63.4947

25.3070, 23.9698,
12.8597

117.8675,
116.4984, 85.2476

16.4359, 15.3112,
7.2024

148.5781,
147.5420, 111.4753

9.9259, 9.0381,
3.5086

184.2073,
183.6618, 142.5963

5.4118, 4.7660,
1.3599

225.1205,
225.2423, 179.0292

2.5280, 2.1107,
0.1101

271.6831,

0.9094, 0.6706,

272.6677, 221.1924

0.0000

324.2604,
326.3226, 269.5045

■ 0.0000, 0.0000,
0.0000

■ 51.5942, 49.9809,
31.7389

■ 51.5942, 49.9809,
31.7389

■ 47.8069, 44.7858,
23.1405

■ 55.9296, 55.7338,
42.1798

■ 44.5379, 40.1226,
16.2716

■ 60.8332, 62.0551,
54.5608

■ 41.7604, 35.9734,
11.0114

■ 66.3286, 68.9640,
68.9763

■ 39.4427, 32.3165,
7.2221

■ 72.4368, 76.4766,
85.5136

■ 37.5484, 29.1276,
4.7419

■ 79.1778, 84.6083,
104.2547

■ 36.0303, 26.3777,
3.3533

■ 83.2871, 92.0605,
107.9875

■ 35.6921, 25.7505,
3.0892

■ 84.5505, 94.5873,
108.4086

Harmonies

Analogous

The Analogous color harmony consists of three colors that are next to each other on the color wheel.



56.1114, 49.9809, 38.6778



51.5942, 49.9809, 31.7389



46.2713, 49.9809, 30.2979

Triad

The Triadic color harmony groups three colors that are evenly spaced from another and form a triangle on the color wheel.



51.5942, 49.9809, 31.7389



38.0956, 49.9809, 58.0645



53.9062, 49.9809, 81.1943

Complementary

The Complementary color scheme is a pair of colors which are on the opposite of each other on the color wheel.



51.5942, 49.9809, 31.7389



41.6182, 45.6537, 77.1396

Split Complementary

Split-complementary colors differ from the complementary color scheme. The scheme consists of three colors, the original color and two neighbors of the complement color.



48.7612, 49.9809, 88.8135



51.5942, 49.9809, 31.7389



39.8276, 49.9809, 73.9431

Square

The Square scheme is like the rectangle color scheme, but the four colors are evenly spaced on the color wheel.



51.5942, 49.9809, 31.7389



38.7309, 49.9809, 43.8074



43.6384, 49.9809, 85.9391



57.5140, 49.9809, 66.6231

Rectangle

The Rectangle color scheme consists of four colors that form a rectangle on the color wheel.



51.5942, 49.9809, 31.7389



43.0263, 49.9809, 32.3495



43.6384, 49.9809, 85.9391



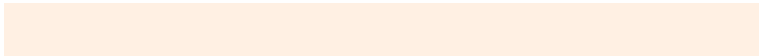
52.2849, 49.9809, 84.7659

Sweetspot

The Sweet Spot groups the original color and five complimentary colors.



51.5955, 49.9833, 31.7399



86.2509, 89.1086, 85.2906



49.0031, 38.1577, 51.3488



18.2440, 18.8003, 17.6845



0.0000, 0.0000, 0.0000



20.3446, 21.4041, 23.3091

Same Dimension

The Same Dimension uses a secret algorithm to generate beautiful new colors.



51.5955, 49.9833, 31.7399



65.1801, 61.5369, 33.3502



61.0150, 68.8224, 34.8798



14.2292, 14.7443, 14.4028



20.8880, 15.2139, 1.8356



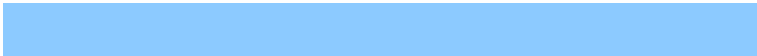
1.5368, 1.2324, 0.1569

Inverse Universe

The Inverse Universe completely reimagines the original color for something new.



41.6182, 45.6537, 77.1396



49.9615, 54.9255, 102.5762



34.2739, 30.9650, 74.6915



13.5570, 14.4532, 17.4629



11.8564, 11.1824, 42.5819



0.9112, 0.9538, 2.9813

Previews

White Background



This preview shows how the XYZ color 51.5942, 49.9809, 31.7389 looks on a white background.

Color Contrast Check

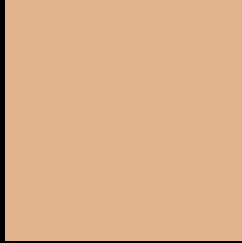
Large Text (above 18pt) WCAG AA × Fail

Any Text WCAG AA × Fail

Large Text (above 18pt) WCAG AAA × Fail

Any Text WCAG AAA × Fail

Black Background



This preview shows how the XYZ color 51.5942, 49.9809, 31.7389 looks on a black background.

Color Contrast Check

Large Text (above 18pt) WCAG AA ✓ Pass

Any Text WCAG AA ✓ Pass

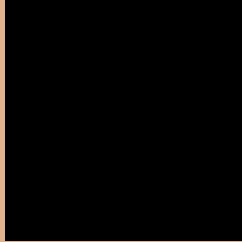
Large Text (above 18pt) WCAG AAA ✓ Pass

Any Text WCAG AAA ✓ Pass

If you want to check with other color combinations, try the [Color Contrast Checker](#).

XYZ 51.5942, 49.9809, 31.7389

Background



This preview shows how black text looks on a background with the XYZ color 51.5942, 49.9809, 31.7389.



This preview shows how white text looks on a background with the XYZ color 51.5942, 49.9809,

31.7389.

Color Blindness Simulation

Color vision deficiency is a very complex topic, and I could not describe the different causes any better than Wikipedia does, so if you want to learn more, you should check out their [article about color blindness](#).

Dichromacy



Original Color

51.5942, 49.9809, 31.7389

Protanopia

46.8918, 49.9718, 33.5596

Deuteranopia

51.1791, 50.0656, 31.7771



Tritanopia

56.1196, 50.0903, 53.1649

Trichromacy



Original Color

51.5942, 49.9809, 31.7389

Protanomaly

48.3929, 49.8195, 33.0521

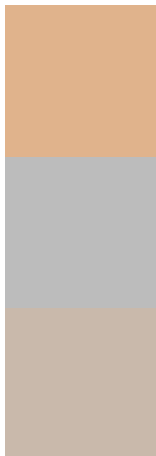
Deuteranomaly

51.4863, 50.2239, 31.7915

Tritanomaly

54.1700, 49.8554, 44.3041

Monochromacy



Original Color

51.5942, 49.9809, 31.7389

Achromatopsia

47.7994, 50.2886, 54.7643

Achromatomaly

48.7870, 50.0557, 45.6184

CSS Examples

Text

The CSS property to change the color of the text to XYZ 51.5942, 49.9809, 31.7389 is called "color". The color property can be set on classes, ids or directly on the HTML element.

This example shows how text in the color `rgb(224, 179, 140)` looks like.

```
.text, #text, p{  
    color:rgb(224, 179, 140)  
}
```

If you want to add a text shadow in that color use the text-shadow property, you can generate a text shadow directly with our [CSS Text Shadow Generator](#).

Here you see how black text with a 4 pixel rgb(224, 179, 140) colored shadow looks like.

```
.shadow{ text-shadow: 4px 4px 2px rgb(224, 179, 140) }
```

Border

The CSS property to change the border of an element to XYZ 51.5942, 49.9809, 31.7389 is called "border". The border property can be set on classes, ids or directly on the HTML element.

This example shows the color as border, it can be applied via the CSS property "border" or "border-color".

```
.border, #border, table{ border:4px solid rgb(224, 179, 140) }
```


If only the border color should be changed use the property `border-color`.

```
.border{ border-color:rgb(224, 179, 140) }
```

If you want to add a box shadow in that color use:

Here you see how a box with a 4 pixel `rgb(224, 179, 140)` colored shadow looks like.

```
.boxshadow{ -moz-box-shadow:4px 4px 4px  
4px rgb(224, 179, 140); -webkit-box-  
shadow:4px 4px 4px 4px rgb(224, 179, 140);  
box-shadow:4px 4px 4px 4px rgb(224, 179,  
140) }
```

Background

The CSS property to change the background color of an element to XYZ 51.5942, 49.9809, 31.7389 is called "background". The background property can be set on classes, ids or directly on the HTML element.

```
.background, #background, body{  
background: rgb(224, 179, 140) }
```

If only the background color should be changed can be used:

```
.background{ background-color: rgb(224,  
179, 140) }
```

This example shows the color as background, it is applied via the CSS property "background".

To optimize and compress your CSS code, you can use our [online CSS compressor and optimizer](#) based on csstidy. If you want to create a linear or radial gradient as background or border, check our [CSS Gradient Generator](#).

Hey! You found this booklet interesting? Support Converting Colors with the new Membership Option!

The pro membership hides all ads, plus gives you double the colors in the color bucket, and more awesome pro features!

[Learn more, Memberships starting at \\$2.50/m!](#)

**Follow me
on Twitter!**

@ConvertingColor