

Converting Colors

XYZ(51.7877, 50.7492, 48.1231)

Have a look what the booklet for
XYZ(51.7877, 50.7492, 48.1231)
contains.

XYZ(51.7158, 50.5875, 48.1129)	3
<i>Conversions</i>	4
<i>Details</i>	6
<i>Harmonies</i>	12
<i>Previews</i>	24
<i>Color Blindness Simulation</i>	28
<i>CSS Examples</i>	31

Color

**XYZ(51.7158, 50.5875,
48.1129)**

Conversions

Conversions Part 1

Format	Color
Hex	D4B6B0
RGB	212, 182, 176
RGB Percent	83%, 71%, 69%
CMY	0.1686, 0.2863, 0.3098
CMYK	0.00, 0.14, 0.17, 0.17
HSL	10°, 30%, 76%
HSV	10°, 17%, 83%
XYZ	51.7158, 50.5875, 48.1129
YIQ	190.2860, 19.8060, 4.4940

Conversions

Conversions Part 2

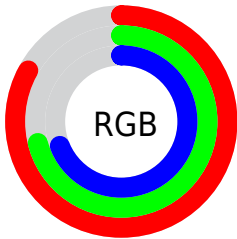
Format	Color
R _Y B	212, 183, 176
Decimal	13940400
CIE Lab	76.43, 9.79, 7.03
CIE LCh	76, 12.053, 35.652
Yxy	50.5875, 0.3438, 0.3363
Android (android.graphics.Color)	4292130480 (0xFFD4B6B0)
YUV	190.2860, -7.0430, 19.0432
Hunter-Lab	71.1249, 5.3210, 9.6803

Details

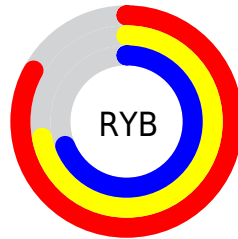
The XYZ color **51.7158, 50.5875, 48.1129** is a light color, and the websafe version is hex **CC9999**. A complement of this color would be **51.8591, 58.1249, 70.7738**, and the grayscale version is **49.1408, 51.7000, 56.3013**.

A 20% lighter version of the original color is **86.3800, 88.2353, 88.8223**, and **25.3930, 24.3238, 22.4254** is the 20% darker color. If you saturate the color by 10%, you get **46.3878, 43.0300, 36.7836**, and if you desaturate by 10%, it is **57.8306, 59.1932, 61.3218**.

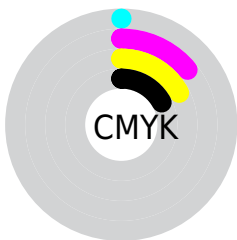
Distribution



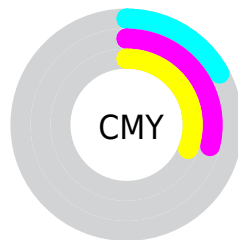
- Red (83%)
- Green (71%)
- Blue (69%)



- Red (83%)
- Yellow (72%)
- Blue (69%)



- Cyan (0%)
- Magenta (14%)
- Yellow (17%)
- Black (17%)





- Cyan (17%)
- Magenta (29%)
- Yellow (31%)

Brightness & Saturation Gradients


These gradients show how the XYZ color 51.7158, 50.5875, 48.1129 changes by changing the brightness by 10 percent. The first figure shows a shift by +10% for each color and the second figure -10%.


Similar to the brightness gradients but the following saturation gradients show a change of the XYZ color 51.7158, 50.5875, 48.1129 by changing the saturation by 10% instead.


 51.7158, 50.5875,
48.1129

 51.7158, 50.5875,
48.1129


383.6805,
388.9590, 395.7611

 37.0019, 35.8804,
33.5557


 91.8887, 91.0447,
88.7398

 25.3827, 24.3419,
22.2779


118.0784,
117.5637, 115.6465

 16.4926, 15.5874,
13.8610


148.8242,
148.7887, 147.5068

 9.9665, 9.2327,
7.8864

184.4913,
185.1042, 184.7393

 5.4388, 4.8933,
3.9356

225.4451,
226.8946, 227.7624

 2.5444, 2.1848,
1.5901

272.0510,

 0.9177, 0.7117,

274.5443, 276.9947

0.2837

324.6743,
328.4376, 332.8547

■ 0.0000, 0.0000,
0.0000

■ 51.7158, 50.5875,
48.1129

■ 51.7158, 50.5875,
48.1129

■ 46.3878, 43.0300,
36.7836

■ 57.8306, 59.1932,
61.3218

■ 41.8103, 36.4741,
27.2452

■ 64.7581, 68.8782,
76.4871

■ 37.9504, 30.8796,
19.4067

■ 72.5285, 79.6805,
93.6853

■ 34.7710, 26.2008,
13.1677

■ 80.2205, 91.2550,
107.9937

■ 32.2317, 22.3885,
8.4171

■ 80.9616, 92.7372,
108.2407

■ 30.2875, 19.3887,
5.0298

■ 28.8874, 17.1410,
2.8597

■ 27.9689, 15.5757,
1.7161

■ 27.7632, 15.2203,
1.4745

Harmonies

Analogous

The Analogous color harmony consists of three colors that are next to each other on the color wheel.



52.5567, 50.5875, 53.8593



51.7158, 50.5875, 48.1129



49.9036, 50.5875, 44.4613

Triad

The Triadic color harmony groups three colors that are evenly spaced from another and form a triangle on the color wheel.



51.7158, 50.5875, 48.1129



44.2146, 50.5875, 50.0876



48.5130, 50.5875, 68.4781

Complementary

The Complementary color scheme is a pair of colors which are on the opposite of each other on the color wheel.



51.7158, 50.5875, 48.1129



51.8591, 58.1249, 70.7738

Split Complementary

Split-complementary colors differ from the complementary color scheme. The scheme consists of three colors, the original color and two neighbors of the complement color.



46.3051, 50.5875, 67.2703



51.7158, 50.5875, 48.1129



43.8686, 50.5875, 56.3214

Square

The Square scheme is like the rectangle color scheme, but the four colors are evenly spaced on the color wheel.



51.7158, 50.5875, 48.1129



45.5829, 50.5875, 45.5370



44.6223, 50.5875, 62.6918



50.6706, 50.5875, 65.8736

Rectangle

The Rectangle color scheme consists of four colors that form a rectangle on the color wheel.



51.7158, 50.5875, 48.1129



48.4135, 50.5875, 43.5353



44.6223, 50.5875, 62.6918



47.7518, 50.5875, 68.5068

Sweetspot

The Sweet Spot groups the original color and five complimentary colors.



51.7172, 50.5898, 48.1140



89.7687, 92.6139, 97.3464



53.8179, 49.5046, 65.1119



19.0608, 19.6083, 20.5018



0.0000, 0.0000, 0.0000



20.3446, 21.4041, 23.3091

Same Dimension

The Same Dimension uses a secret algorithm to generate beautiful new colors.



51.7172, 50.5898, 48.1140



75.8091, 72.9597, 67.2138



55.6427, 58.4408, 49.4225



12.5889, 12.7521, 12.9586



17.1890, 9.4952, 0.9268



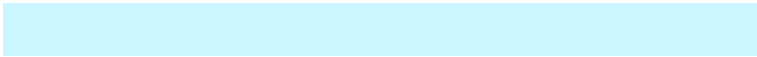
1.0895, 0.6781, 0.0735

Inverse Universe

The Inverse Universe completely reimagines the original color for something new.



51.8591, 58.1249, 70.7738



76.0582, 86.2701, 107.2508



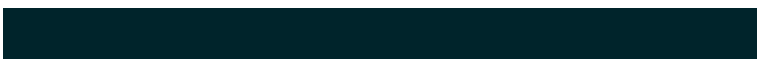
47.7720, 49.9507, 69.4115



12.6077, 13.7389, 15.9249



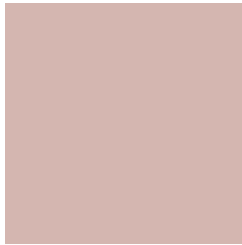
17.0625, 22.3868, 41.8750



1.0770, 1.4460, 2.5417

Previews

White Background



This preview shows how the XYZ color 51.7158, 50.5875, 48.1129 looks on a white background.

Color Contrast Check

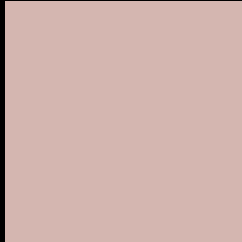
Large Text (above 18pt) WCAG AA × Fail

Any Text WCAG AA × Fail

Large Text (above 18pt) WCAG AAA × Fail

Any Text WCAG AAA × Fail

Black Background



This preview shows how the XYZ color 51.7158, 50.5875, 48.1129 looks on a black background.

Color Contrast Check

Large Text (above 18pt) WCAG AA ✓ Pass

Any Text WCAG AA ✓ Pass

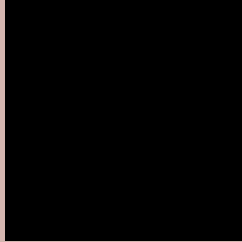
Large Text (above 18pt) WCAG AAA ✓ Pass

Any Text WCAG AAA ✓ Pass

If you want to check with other color combinations, try the [Color Contrast Checker](#).

XYZ 51.7158, 50.5875, 48.1129

Background



This preview shows how black text looks on a background with the XYZ color 51.7158, 50.5875, 48.1129.



This preview shows how white text looks on a background with the XYZ color 51.7158, 50.5875,

Color Blindness Simulation

Color vision deficiency is a very complex topic, and I could not describe the different causes any better than Wikipedia does, so if you want to learn more, you should check out their [article about color blindness](#).

Dichromacy



Original Color

51.7158, 50.5875, 48.1129

Protanopia

48.3680, 50.6904, 49.8828

Deuteranopia

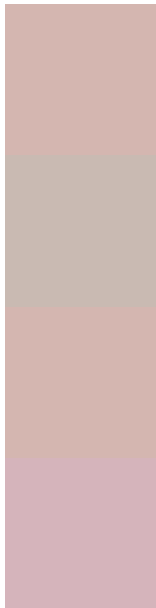
51.7158, 50.5875, 48.1129



Tritanopia

53.4773, 50.3866, 57.3591

Trichromacy



Original Color

51.7158, 50.5875, 48.1129

Protanomaly

49.6822, 50.7497, 49.2966

Deuteranomaly

51.7158, 50.5875, 48.1129

Tritanomaly

52.7315, 50.3765, 53.9581

Monochromacy



Original Color

51.7158, 50.5875, 48.1129

Achromatopsia

48.9429, 51.4918, 56.0745

Achromatomaly

49.8160, 51.0492, 53.1268

CSS Examples

Text

The CSS property to change the color of the text to XYZ 51.7158, 50.5875, 48.1129 is called "color". The color property can be set on classes, ids or directly on the HTML element.

This example shows how text in the color `rgb(212, 182, 176)` looks like.

```
.text, #text, p{  
    color:rgb(212, 182, 176)  
}
```

If you want to add a text shadow in that color use the text-shadow property, you can generate a text shadow directly with our [CSS Text Shadow Generator](#).

Here you see how black text with a 4 pixel rgb(212, 182, 176) colored shadow looks like.

```
.shadow{ text-shadow: 4px 4px 2px rgb(212, 182, 176) }
```

Border

The CSS property to change the border of an element to XYZ 51.7158, 50.5875, 48.1129 is called "border". The border property can be set on classes, ids or directly on the HTML element.

This example shows the color as border, it can be applied via the CSS property "border" or "border-color".

```
.border, #border, table{ border:4px solid rgb(212, 182, 176) }
```


If only the border color should be changed use the property `border-color`.

```
.border{ border-color:rgb(212, 182, 176) }
```

If you want to add a box shadow in that color use:

Here you see how a box with a 4 pixel `rgb(212, 182, 176)` colored shadow looks like.

```
.boxshadow{ -moz-box-shadow:4px 4px 4px  
4px rgb(212, 182, 176); -webkit-box-  
shadow:4px 4px 4px 4px rgb(212, 182, 176);  
box-shadow:4px 4px 4px 4px rgb(212, 182,  
176) }
```

Background

The CSS property to change the background color of an element to XYZ 51.7158, 50.5875, 48.1129 is called "background". The background property can be set on classes, ids or directly on the HTML element.

```
.background, #background, body{  
background: rgb(212, 182, 176) }
```

If only the background color should be changed can be used:

```
.background{ background-color: rgb(212,  
182, 176) }
```

This example shows the color as background, it is applied via the CSS property "background".

To optimize and compress your CSS code, you can use our [online CSS compressor and optimizer](#) based on csstidy. If you want to create a linear or radial gradient as background or border, check our [CSS Gradient Generator](#).

Hey! You found this booklet interesting? Support Converting Colors with the new Membership Option!

The pro membership hides all ads, plus gives you double the colors in the color bucket, and more awesome pro features!

[Learn more, Memberships starting at \\$2.50/m!](#)

**Follow me
on Twitter!**

@ConvertingColor