

Converting Colors

XYZ(51.8624, 51.9188, 54.6491)

Have a look what the booklet for
XYZ(51.8624, 51.9188, 54.6491)
contains.

XYZ(52.0243, 52.1506, 54.9011)	3
<i>Conversions</i>	4
<i>Details</i>	6
<i>Harmonies</i>	12
<i>Previews</i>	24
<i>Color Blindness Simulation</i>	28
<i>CSS Examples</i>	31

Color

**XYZ(52.0243, 52.1506,
54.9011)**

Conversions

Conversions Part 1

Format	Color
Hex	CDBBBC
RGB	205, 187, 188
RGB Percent	80%, 73%, 74%
CMY	0.1961, 0.2666, 0.2627
CMYK	0.00, 0.09, 0.08, 0.20
HSL	357°, 15%, 77%
HSV	357°, 9%, 80%
XYZ	52.0243, 52.1506, 54.9011
YIQ	192.4960, 10.4070, 4.1270

Conversions

Conversions Part 2

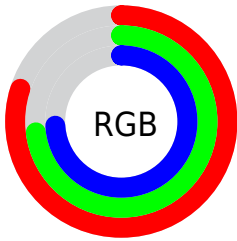
Format	Color
RYB	205, 187, 188
Decimal	13482940
CIELab	77.37, 6.54, 1.80
CIElCh	77, 6.785, 15.372
Yxy	52.1506, 0.3270, 0.3278
Android (android.graphics.Color)	4291673020 (0xFFCDBBBC)
YUV	192.4960, -2.2165, 10.9660
Hunter-Lab	72.2154, 2.2154, 5.4761

Details

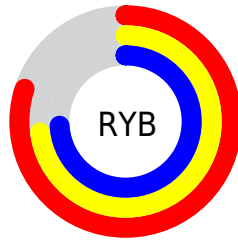
The XYZ color **52.0243, 52.1506, 54.9011** is a light color, and the websafe version is hex **CCCCCC**. A complement of this color would be **53.2259, 58.5885, 65.6330**, and the grayscale version is **50.4024, 53.0273, 57.7467**.

A 20% lighter version of the original color is **89.6197, 91.8928, 98.6016**, and **25.6608, 25.3788, 26.4678** is the 20% darker color. If you saturate the color by 10%, you get **46.0327, 43.2865, 43.2864**, and if you desaturate by 10%, it is **58.9198, 62.3729, 68.2003**.

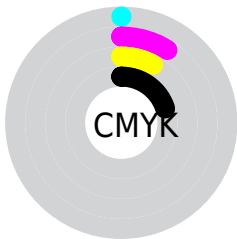
Distribution



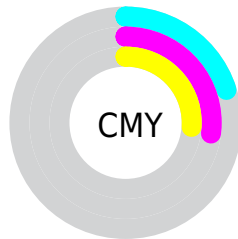
- Red (80%)
- Green (73%)
- Blue (74%)



- Red (80%)
- Yellow (73%)
- Blue (74%)



- Cyan (0%)
- Magenta (9%)
- Yellow (8%)
- Black (20%)



- Cyan (20%)
- Magenta (27%)
- Yellow (26%)

Brightness & Saturation Gradients

These gradients show how the XYZ color 52.0243, 52.1506, 54.9011 changes by changing the brightness by 10 percent. The first figure shows a shift by +10% for each color and the second figure -10%.

Similar to the brightness gradients but the following saturation gradients show a change of the XYZ color 52.0243, 52.1506, 54.9011 by changing the saturation by 10% instead.

■ 52.0243, 52.1506,
54.9011

■ 52.0243, 52.1506,
54.9011

384.8528,
395.0177, 422.8083

■ 37.2488, 37.1251,
38.9245

■ 92.3411, 93.3533,
98.8657

■ 25.5747, 25.3044,
26.3936

118.6131,
120.2993, 127.6908

■ 16.6368, 16.3040,
16.8899

149.4480,
151.9877, 161.6358

■ 10.0696, 9.7395,
9.9949

185.2110,
188.8027, 201.1193

■ 5.5077, 5.2266,
5.2900

226.2677,
231.1288, 246.5597

■ 2.5859, 2.3808,
2.3567

272.9833,

■ 0.9388, 0.8160,

279.3504, 298.3757

0.7627

325.7233,
333.8519, 356.9857

■ 0.0000, 0.0000,
0.0000

■ 52.0243, 52.1506,
54.9011

■ 52.0243, 52.1506,
54.9011

■ 46.0327, 43.2865,
43.2864

■ 58.9198, 62.3729,
68.2003

■ 40.9033, 35.7171,
33.2859

■ 66.7500, 74.0001,
83.2440

■ 36.5978, 29.3838,
24.8291

■ 75.5494, 87.0849,
100.0932

■ 33.0733, 24.2210,
17.8390

■ 78.9872, 91.7193,
108.1483

■ 30.2828, 20.1569,
12.2322

■ 28.1744, 17.1120,
7.9168

■ 26.6894, 14.9959,
4.7897

■ 25.7593, 13.7025,
2.7321

■ 25.2817, 13.0646,
1.5947

Harmonies

Analogous

The Analogous color harmony consists of three colors that are next to each other on the color wheel.



52.0330, 52.1506, 58.6156



52.0243, 52.1506, 54.9011



51.3496, 52.1506, 51.8253

Triad

The Triadic color harmony groups three colors that are evenly spaced from another and form a triangle on the color wheel.



52.0243, 52.1506, 54.9011



47.8048, 52.1506, 51.8874



48.9372, 52.1506, 64.0171

Complementary

The Complementary color scheme is a pair of colors which are on the opposite of each other on the color wheel.



52.0243, 52.1506, 54.9011



53.2259, 58.5885, 65.6330

Split Complementary

Split-complementary colors differ from the complementary color scheme. The scheme consists of three colors, the original color and two neighbors of the complement color.



47.8273, 52.1506, 62.0475



52.0243, 52.1506, 54.9011



47.1813, 52.1506, 54.9892

Square

The Square scheme is like the rectangle color scheme, but the four colors are evenly spaced on the color wheel.



52.0243, 52.1506, 54.9011



48.9060, 52.1506, 50.1379



47.1894, 52.1506, 58.7077



50.2351, 52.1506, 63.9910

Rectangle

The Rectangle color scheme consists of four colors that form a rectangle on the color wheel.



52.0243, 52.1506, 54.9011



50.6196, 52.1506, 50.5035



47.1894, 52.1506, 58.7077



48.5302, 52.1506, 63.5629

Sweetspot

The Sweet Spot groups the original color and five complimentary colors.



52.0258, 52.1529, 54.9022



91.5161, 94.7591, 102.0898



53.6384, 52.7598, 65.1150



19.3911, 19.9901, 21.4713



0.0000, 0.0000, 0.0000



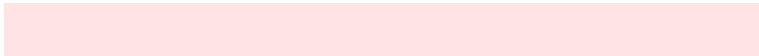
20.3446, 21.4041, 23.3091

Same Dimension

The Same Dimension uses a secret algorithm to generate beautiful new colors.



52.0258, 52.1529, 54.9022



82.7690, 81.8003, 85.1923



53.6184, 55.5095, 54.9048



11.2371, 11.2236, 11.7831



15.7238, 8.1001, 0.9983



0.8202, 0.4215, 0.0990

Inverse Universe

The Inverse Universe completely reimagines the original color for something new.



52.0258, 52.1529, 54.9022



82.7690, 81.8003, 85.1923



51.5266, 54.9979, 65.6583



11.2371, 11.2236, 11.7831



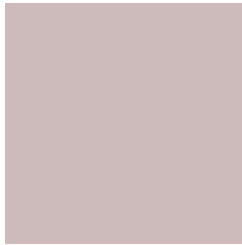
15.7238, 8.1001, 0.9983



0.8202, 0.4215, 0.0990

Previews

White Background



This preview shows how the XYZ color 52.0243, 52.1506, 54.9011 looks on a white background.

Color Contrast Check

Large Text (above 18pt) WCAG AA × Fail

Any Text WCAG AA × Fail

Large Text (above 18pt) WCAG AAA × Fail

Any Text WCAG AAA × Fail

Black Background



This preview shows how the XYZ color 52.0243, 52.1506, 54.9011 looks on a black background.

Color Contrast Check

Large Text (above 18pt) WCAG AA ✓ Pass

Any Text WCAG AA ✓ Pass

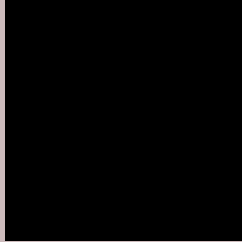
Large Text (above 18pt) WCAG AAA ✓ Pass

Any Text WCAG AAA ✓ Pass

If you want to check with other color combinations, try the [Color Contrast Checker](#).

XYZ 52.0243, 52.1506, 54.9011

Background



This preview shows how black text looks on a background with the XYZ color 52.0243, 52.1506, 54.9011.



This preview shows how white text looks on a background with the XYZ color 52.0243, 52.1506,

Color Blindness Simulation

Color vision deficiency is a very complex topic, and I could not describe the different causes any better than Wikipedia does, so if you want to learn more, you should check out their [article about color blindness](#).

Dichromacy



Original Color

52.0243, 52.1506, 54.9011

Protanopia

50.2134, 52.1467, 56.1340

Deuteranopia

53.2900, 52.1776, 54.8396



Tritanopia

53.5064, 52.1335, 61.8863

Trichromacy



Original Color

52.0243, 52.1506, 54.9011

Protanomaly

50.9361, 52.2114, 55.5373

Deuteranomaly

52.9305, 52.3040, 54.8829

Tritanomaly

52.9763, 52.2251, 59.5129

Monochromacy



Original Color

52.0243, 52.1506, 54.9011

Achromatopsia

50.1023, 52.7115, 57.4028

Achromatomaly

50.8434, 52.4588, 56.7360

CSS Examples

Text

The CSS property to change the color of the text to XYZ 52.0243, 52.1506, 54.9011 is called "color". The color property can be set on classes, ids or directly on the HTML element.

This example shows how text in the color rgb(205, 187, 188) looks like.

```
.text, #text, p{  
    color:rgb(205, 187, 188)  
}
```

If you want to add a text shadow in that color use the text-shadow property, you can generate a text shadow directly with our [CSS Text Shadow Generator](#).

Here you see how black text with a 4 pixel rgb(205, 187, 188) colored shadow looks like.

```
.shadow{ text-shadow: 4px 4px 2px rgb(205, 187, 188) }
```

Border

The CSS property to change the border of an element to XYZ 52.0243, 52.1506, 54.9011 is called "border". The border property can be set on classes, ids or directly on the HTML element.

This example shows the color as border, it can be applied via the CSS property "border" or "border-color".

```
.border, #border, table{ border:4px solid rgb(205, 187, 188) }
```


If only the border color should be changed use the property `border-color`.

```
.border{ border-color:rgb(205, 187, 188) }
```

If you want to add a box shadow in that color use:

Here you see how a box with a 4 pixel `rgb(205, 187, 188)` colored shadow looks like.

```
.boxshadow{ -moz-box-shadow:4px 4px 4px  
4px rgb(205, 187, 188); -webkit-box-  
shadow:4px 4px 4px 4px rgb(205, 187, 188);  
box-shadow:4px 4px 4px 4px rgb(205, 187,  
188) }
```

Background

The CSS property to change the background color of an element to XYZ 52.0243, 52.1506, 54.9011 is called "background". The background property can be set on classes, ids or directly on the HTML element.

```
.background, #background, body{  
background: rgb(205, 187, 188) }
```

If only the background color should be changed can be used:

```
.background{ background-color: rgb(205,  
187, 188) }
```

This example shows the color as background, it is applied via the CSS property "background".

To optimize and compress your CSS code, you can use our [online CSS compressor and optimizer](#) based on csstidy. If you want to create a linear or radial gradient as background or border, check our [CSS Gradient Generator](#).

Hey! You found this booklet interesting? Support Converting Colors with the new Membership Option!

The pro membership hides all ads, plus gives you double the colors in the color bucket, and more awesome pro features!

[Learn more, Memberships starting at \\$2.50/m!](#)

**Follow me
on Twitter!**

@ConvertingColor