

# Converting Colors

XYZ(51.8629, 51.1910, 52.7409)

Have a look what the booklet for  
XYZ(51.8629, 51.1910, 52.7409)  
contains.

<b>XYZ(51.8046, 51.1516, 52.4902)</b> .....	3
<b><i>Conversions</i></b> .....	4
<b><i>Details</i></b> .....	6
<b><i>Harmonies</i></b> .....	12
<b><i>Previews</i></b> .....	24
<b><i>Color Blindness Simulation</i></b> .....	28
<b><i>CSS Examples</i></b> .....	31

# Color

**XYZ(51.8046, 51.1516,  
52.4902)**

# Conversions

## Conversions Part 1

Format	Color
Hex	D0B8B8
RGB	208, 184, 184
RGB Percent	82%, 72%, 72%
CMY	0.1843, 0.2784, 0.2784
CMYK	0.00, 0.12, 0.12, 0.18
HSL	0°, 20%, 77%
HSV	0°, 12%, 82%
XYZ	51.8046, 51.1516, 52.4902
YIQ	191.1760, 14.3040, 5.0880

# Conversions

## Conversions Part 2

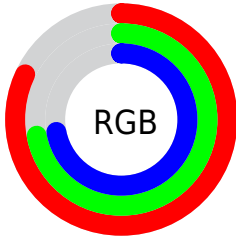
<b>Format</b>	<b>Color</b>
R <sub>Y</sub> B	208, 184, 184
Decimal	13678776
CIE Lab	76.77, 8.55, 3.13
CIE LCh	77, 9.106, 20.097
Yxy	51.1516, 0.3333, 0.3291
Android (android.graphics.Color)	4291868856 (0xFFD0B8B8)
YUV	191.1760, -3.5378, 14.7546
Hunter-Lab	71.5203, 4.1330, 6.5501

# Details

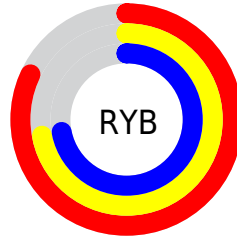
The XYZ color **51.8046, 51.1516, 52.4902** is a light color, and the websafe version is hex **CCCCCC**. A complement of this color would be **53.7078, 59.8547, 68.3973**, and the grayscale version is **49.6386, 52.2237, 56.8716**.

A 20% lighter version of the original color is **88.1283, 89.8714, 95.1401**, and **25.3499, 24.6436, 24.8933** is the 20% darker color. If you saturate the color by 10%, you get **45.7758, 42.3301, 40.5028**, and if you desaturate by 10%, it is **58.7920, 61.3761, 66.3800**.

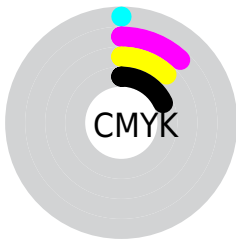
# Distribution



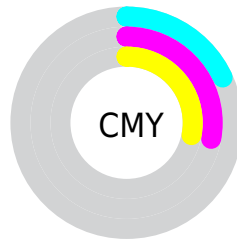
- Red (82%)
- Green (72%)
- Blue (72%)



- Red (82%)
- Yellow (72%)
- Blue (72%)



- Cyan (0%)
- Magenta (12%)
- Yellow (12%)
- Black (18%)




- Cyan (18%)
- Magenta (28%)
- Yellow (28%)


# Brightness & Saturation Gradients

These gradients show how the XYZ color 51.8046, 51.1516, 52.4902 changes by changing the brightness by 10 percent. The first figure shows a shift by +10% for each color and the second figure -10%.


Similar to the brightness gradients but the following saturation gradients show a change of the XYZ color 51.8046, 51.1516, 52.4902 by changing the saturation by 10% instead.





 51.8046, 51.1516,  
52.4902

 51.8046, 51.1516,  
52.4902


384.0181,  
391.1525, 413.3368

 37.0730, 36.3293,  
37.0110


 92.0189, 91.8788,  
95.2877

 25.4379, 24.6886,  
24.9202


118.2324,  
118.5525, 123.4431

 16.5341, 15.8452,  
15.7991


149.0038,  
149.9454, 156.6610

 9.9961, 9.4147,  
9.2293

184.6986,  
186.4420, 195.3600

 5.4586, 5.0126,  
4.7922

225.6820,  
228.4266, 239.9585

 2.5563, 2.2547,  
2.0693

272.3195,

 0.9237, 0.7496,

276.2836, 290.8751

0.5974

324.9765,  
330.3974, 348.5284

■ 0.0000, 0.0000,  
0.0000

■ 51.8046, 51.1516,  
52.4902

■ 51.8046, 51.1516,  
52.4902

■ 45.7758, 42.3301,  
40.5028

■ 58.7920, 61.3761,  
66.3800

■ 40.6597, 34.8439,  
30.3319

■ 66.7727, 73.0537,  
82.2465

■ 36.4132, 28.6300,  
21.8900

■ 75.7849, 86.2406,  
100.1640

■ 32.9879, 23.6179,  
15.0809

■ 79.8226, 92.1500,  
108.1874

■ 30.3309, 19.7297,  
9.7992

■ 28.3828, 16.8790,  
5.9271

■ 27.0759, 14.9663,  
3.3295

■ 26.3289, 13.8731,  
1.8454

■ 26.0130, 13.4107,  
1.2175

# Harmonies

## Analogous

The Analogous color harmony consists of three colors that are next to each other on the color wheel.



51.9641, 51.1516, 57.3475



51.8046, 51.1516, 52.4902



50.7801, 51.1516, 48.7119

# Triad

The Triadic color harmony groups three colors that are evenly spaced from another and form a triangle on the color wheel.



51.8046, 51.1516, 52.4902



46.1142, 51.1516, 49.8132



48.0491, 51.1516, 65.6019

# Complementary

The Complementary color scheme is a pair of colors which are on the opposite of each other on the color wheel.



51.8046, 51.1516, 52.4902



53.7078, 59.8547, 68.3973

# Split Complementary

Split-complementary colors differ from the complementary color scheme. The scheme consists of three colors, the original color and two neighbors of the complement color.



46.5183, 51.1516, 63.3164



51.8046, 51.1516, 52.4902



45.4188, 51.1516, 54.0754

# Square

The Square scheme is like the rectangle color scheme, but the four colors are evenly spaced on the color wheel.



51.8046, 51.1516, 52.4902



47.4856, 51.1516, 47.2309



45.5649, 51.1516, 59.0285



49.7684, 51.1516, 65.1151



# Rectangle

The Rectangle color scheme consists of four colors that form a rectangle on the color wheel.



51.8046, 51.1516, 52.4902



49.7576, 51.1516, 47.2211



45.5649, 51.1516, 59.0285



47.4960, 51.1516, 65.1274

# Sweetspot

The Sweet Spot groups the original color and five complimentary colors.



51.8060, 51.1539, 52.4913



91.4509, 94.7336, 101.7446



54.5386, 52.2456, 66.8848



19.3736, 19.9833, 21.3786



0.0000, 0.0000, 0.0000



20.3446, 21.4041, 23.3091



# Same Dimension

The Same Dimension uses a secret algorithm to generate beautiful new colors.



51.8060, 51.1539, 52.4913



79.4771, 77.2131, 77.9398



54.4046, 56.3510, 53.3575



11.8089, 11.8086, 12.2689



16.2127, 8.3584, 0.7588



0.9066, 0.4675, 0.0424



# Inverse Universe

The Inverse Universe completely reimagines the original color for something new.



53.7078, 59.8547, 68.3973



83.1119, 93.8429, 108.3408



50.8928, 54.2249, 67.4590



12.1583, 13.4068, 15.1906



21.1488, 30.9442, 42.0507

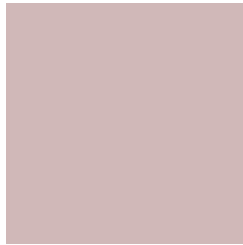


1.1826, 1.7303, 2.3512



# Previews

## White Background



This preview shows how the XYZ color 51.8046, 51.1516, 52.4902 looks on a white background.

## Color Contrast Check

Large Text (above 18pt) WCAG AA × Fail

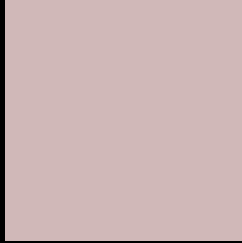
Any Text WCAG AA × Fail

Large Text (above 18pt) WCAG AAA × Fail

Any Text WCAG AAA × Fail



# Black Background



This preview shows how the XYZ color 51.8046, 51.1516, 52.4902 looks on a black background.

## Color Contrast Check

Large Text (above 18pt) WCAG AA ✓ Pass

Any Text WCAG AA ✓ Pass

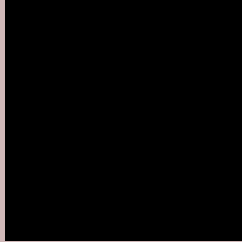
Large Text (above 18pt) WCAG AAA ✓ Pass

Any Text WCAG AAA ✓ Pass

If you want to check with other color combinations, try the [Color Contrast Checker](#).

# XYZ 51.8046, 51.1516, 52.4902

## Background



This preview shows how black text looks on a background with the XYZ color 51.8046, 51.1516, 52.4902.



This preview shows how white text looks on a background with the XYZ color 51.8046, 51.1516,



# Color Blindness Simulation

Color vision deficiency is a very complex topic, and I could not describe the different causes any better than Wikipedia does, so if you want to learn more, you should check out their [article about color blindness](#).

## Dichromacy



### Original Color

51.8046, 51.1516, 52.4902

### Protanopia

49.4154, 51.4524, 54.3405

### Deuteranopia

52.1636, 51.0293, 52.4477



## Tritanopia

53.2701, 51.1431, 59.2885

# Trichromacy



## Original Color

51.8046, 51.1516, 52.4902

## Protanomaly

50.1864, 51.2279, 53.6972

## Deuteranomaly

51.8797, 50.8830, 52.4344

## Tritanomaly

52.7424, 51.2281, 56.9774

# Monochromacy



## Original Color

51.8046, 51.1516, 52.4902

## Achromatopsia

49.5206, 52.0996, 56.7364

## Achromatomaly

50.0863, 51.4676, 54.8714

# CSS Examples

## Text

The CSS property to change the color of the text to XYZ 51.8046, 51.1516, 52.4902 is called "color". The color property can be set on classes, ids or directly on the HTML element.

This example shows how text in the color `rgb(208, 184, 184)` looks like.

```
.text, #text, p{  
    color:rgb(208, 184, 184)  
}
```

If you want to add a text shadow in that color use the text-shadow property, you can generate a text shadow directly with our [CSS Text Shadow Generator](#).

Here you see how black text with a 4 pixel rgb(208, 184, 184) colored shadow looks like.

```
.shadow{ text-shadow: 4px 4px 2px rgb(208, 184, 184) }
```

## Border

The CSS property to change the border of an element to XYZ 51.8046, 51.1516, 52.4902 is called "border". The border property can be set on classes, ids or directly on the HTML element.

This example shows the color as border, it can be applied via the CSS property "border" or "border-color".

```
.border, #border, table{ border:4px solid rgb(208, 184, 184) }
```



If only the border color should be changed use the property `border-color`.

```
.border{ border-color:rgb(208, 184, 184) }
```

If you want to add a box shadow in that color use:

Here you see how a box with a 4 pixel `rgb(208, 184, 184)` colored shadow looks like.

```
.boxshadow{ -moz-box-shadow:4px 4px 4px  
4px rgb(208, 184, 184); -webkit-box-  
shadow:4px 4px 4px 4px rgb(208, 184, 184);  
box-shadow:4px 4px 4px 4px rgb(208, 184,  
184) }
```

# Background

The CSS property to change the background color of an element to XYZ 51.8046, 51.1516, 52.4902 is called "background". The background property can be set on classes, ids or directly on the HTML element.

```
.background, #background, body{  
background: rgb(208, 184, 184) }
```

If only the background color should be changed can be used:

```
.background{ background-color: rgb(208,  
184, 184) }
```

This example shows the color as background, it is applied via the CSS property "background".

To optimize and compress your CSS code, you can use our [online CSS compressor and optimizer](#) based on csstidy. If you want to create a linear or radial gradient as background or border, check our [CSS Gradient Generator](#).

Hey! You found this booklet interesting? Support Converting Colors with the new Membership Option!

The pro membership hides all ads, plus gives you double the colors in the color bucket, and more awesome pro features!

**[Learn more, Memberships starting at \\$2.50/m!](#)**

**Follow me  
on Twitter!**

@ConvertingColor