

Converting Colors

XYZ(51.8846, 51.5267, 55.7917)

Have a look what the booklet for
XYZ(51.8846, 51.5267, 55.7917)
contains.

XYZ(51.8201, 51.3948, 55.9042)	3
<i>Conversions</i>	4
<i>Details</i>	6
<i>Harmonies</i>	12
<i>Previews</i>	24
<i>Color Blindness Simulation</i>	28
<i>CSS Examples</i>	31

Color

**XYZ(51.8201, 51.3948,
55.9042)**

Conversions

Conversions Part 1

Format	Color
Hex	CDB9BE
RGB	205, 185, 190
RGB Percent	80%, 73%, 75%
CMY	0.1961, 0.2745, 0.2549
CMYK	0.00, 0.10, 0.07, 0.20
HSL	345°, 17%, 76%
HSV	345°, 10%, 80%
XYZ	51.8201, 51.3948, 55.9042
YIQ	191.5500, 10.3150, 5.7950

Conversions

Conversions Part 2

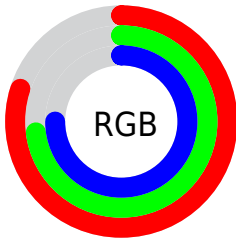
Format	Color
R _Y B	205, 185, 190
Decimal	13482430
CIE Lab	76.92, 7.96, 0.05
CIE LCh	77, 7.960, 0.385
Yxy	51.3948, 0.3257, 0.3230
Android (android.graphics.Color)	4291672510 (0xFFCDB9BE)
YUV	191.5500, -0.7641, 11.7957
Hunter-Lab	71.6902, 3.5681, 3.9486

Details

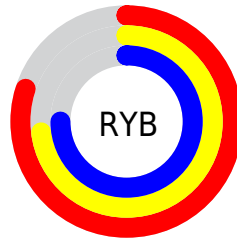
The XYZ color **51.8201, 51.3948, 55.9042** is a light color, and the websafe version is hex **CCCCCC**. A complement of this color would be **52.2662, 58.1484, 63.1155**, and the grayscale version is **49.8420, 52.4377, 57.1047**.

A 20% lighter version of the original color is **89.3298, 90.8244, 100.0115**, and **25.5291, 24.8880, 27.1252** is the 20% darker color. If you saturate the color by 10%, you get **46.2441, 42.7916, 46.1861**, and if you desaturate by 10%, it is **58.1948, 61.3101, 66.7647**.

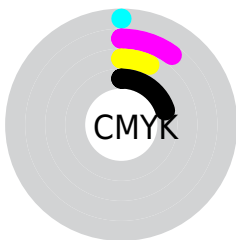
Distribution



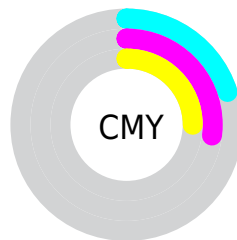
- Red (80%)
- Green (73%)
- Blue (75%)



- Red (80%)
- Yellow (73%)
- Blue (75%)



- Cyan (0%)
- Magenta (10%)
- Yellow (7%)
- Black (20%)



- Cyan (20%)
- Magenta (27%)
- Yellow (25%)

Brightness & Saturation Gradients

These gradients show how the XYZ color 51.8201, 51.3948, 55.9042 changes by changing the brightness by 10 percent. The first figure shows a shift by +10% for each color and the second figure -10%.

Similar to the brightness gradients but the following saturation gradients show a change of the XYZ color 51.8201, 51.3948, 55.9042 by changing the saturation by 10% instead.

■ 51.8201, 51.3948,
55.9042

■ 51.8201, 51.3948,
55.9042

384.0771,
392.0957, 426.7085

■ 37.0854, 36.5229,
39.7226

■ 92.0417, 92.2381,
100.3489

■ 25.4476, 24.8383,
27.0102

118.2592,
118.9783, 129.4491

■ 16.5413, 15.9566,
17.3484

149.0351,
150.4433, 163.6926

■ 10.0013, 9.4935,
10.3186

184.7347,
187.0177, 203.4980

■ 5.4621, 5.0644,
5.5024

225.7234,
229.0857, 249.2837

■ 2.5584, 2.2851,
2.4811

272.3664,

■ 0.9248, 0.7658,

277.0318, 301.4683

0.8301

325.0292,
331.2403, 360.4704

■ 0.0000, 0.0000,
0.0000

■ 51.8201, 51.3948,
55.9042

■ 51.8201, 51.3948,
55.9042

■ 46.2441, 42.7916,
46.1861

■ 58.1948, 61.3101,
66.7647

■ 41.4305, 35.4390,
37.5696

■ 65.3937, 72.5823,
78.8001

■ 37.3468, 29.2803,
30.0159

■ 73.4467, 85.2626,
92.0458

■ 33.9565, 24.2521,
23.4831

■ 78.4307, 91.4967,
105.2179

■ 31.2196, 20.2850,
17.9259

■ 78.9871, 91.7193,
108.1483

■ 29.0921, 17.3018,
13.2959

■ 27.5242, 15.2149,
9.5401

■ 26.4579, 13.9208,
6.5994

■ 25.7935, 13.2346,
4.3970

Harmonies

Analogous

The Analogous color harmony consists of three colors that are next to each other on the color wheel.



51.4254, 51.3948, 60.1845



51.8201, 51.3948, 55.9042



51.4052, 51.3948, 51.8461

Triad

The Triadic color harmony groups three colors that are evenly spaced from another and form a triangle on the color wheel.



51.8201, 51.3948, 55.9042



47.3907, 51.3948, 49.0683



47.4239, 51.3948, 63.5299

Complementary

The Complementary color scheme is a pair of colors which are on the opposite of each other on the color wheel.



51.8201, 51.3948, 55.9042



52.2662, 58.1484, 63.1155

Split Complementary

Split-complementary colors differ from the complementary color scheme. The scheme consists of three colors, the original color and two neighbors of the complement color.



46.3794, 51.3948, 60.2864



51.8201, 51.3948, 55.9042



46.3605, 51.3948, 51.9384

Square

The Square scheme is like the rectangle color scheme, but the four colors are evenly spaced on the color wheel.



51.8201, 51.3948, 55.9042



48.8297, 51.3948, 48.0263



45.9941, 51.3948, 56.0162



48.8688, 51.3948, 64.7230

Rectangle

The Rectangle color scheme consists of four colors that form a rectangle on the color wheel.



51.8201, 51.3948, 55.9042



50.7301, 51.3948, 49.7771



45.9941, 51.3948, 56.0162



47.0154, 51.3948, 62.6353

Sweetspot

The Sweet Spot groups the original color and five complimentary colors.



51.8216, 51.3971, 55.9053



91.7476, 94.8517, 103.3091



52.1895, 51.3875, 64.9264



19.4533, 20.0150, 21.7990



0.0000, 0.0000, 0.0000



20.3446, 21.4041, 23.3091

Same Dimension

The Same Dimension uses a secret algorithm to generate beautiful new colors.



51.8216, 51.3971, 55.9053



82.5753, 80.6154, 87.5863



52.3489, 53.3109, 53.4326



11.3254, 11.2589, 12.2482



16.0811, 8.2430, 2.8795



0.8609, 0.4378, 0.3136

Inverse Universe

The Inverse Universe completely reimagines the original color for something new.



51.8216, 51.3971, 55.9053



82.5753, 80.6154, 87.5863



51.6831, 56.0322, 65.8496



11.3254, 11.2589, 12.2482



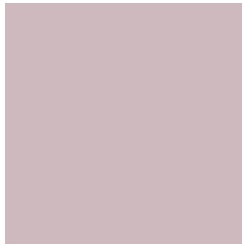
16.0811, 8.2430, 2.8795



0.8609, 0.4378, 0.3136

Previews

White Background



This preview shows how the XYZ color 51.8201, 51.3948, 55.9042 looks on a white background.

Color Contrast Check

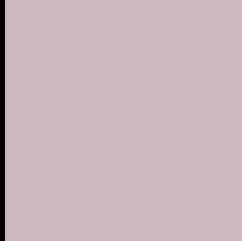
Large Text (above 18pt) WCAG AA × Fail

Any Text WCAG AA × Fail

Large Text (above 18pt) WCAG AAA × Fail

Any Text WCAG AAA × Fail

Black Background



This preview shows how the XYZ color 51.8201, 51.3948, 55.9042 looks on a black background.

Color Contrast Check

Large Text (above 18pt) WCAG AA ✓ Pass

Any Text WCAG AA ✓ Pass

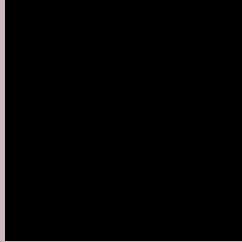
Large Text (above 18pt) WCAG AAA ✓ Pass

Any Text WCAG AAA ✓ Pass

If you want to check with other color combinations, try the [Color Contrast Checker](#).

XYZ 51.8201, 51.3948, 55.9042

Background



This preview shows how black text looks on a background with the XYZ color 51.8201, 51.3948, 55.9042.



This preview shows how white text looks on a background with the XYZ color 51.8201, 51.3948,

Color Blindness Simulation

Color vision deficiency is a very complex topic, and I could not describe the different causes any better than Wikipedia does, so if you want to learn more, you should check out their [article about color blindness](#).

Dichromacy



Original Color

51.8201, 51.3948, 55.9042

Protanopia

49.7043, 51.5384, 57.1974

Deuteranopia

52.4472, 51.4086, 55.8738



Tritanopia

52.7871, 51.4800, 60.5805

Trichromacy



Original Color

51.8201, 51.3948, 55.9042

Protanomaly

50.4131, 51.5983, 56.5926

Deuteranomaly

52.1669, 51.2641, 55.8607

Tritanomaly

52.4444, 51.3429, 58.7758

Monochromacy



Original Color

51.8201, 51.3948, 55.9042

Achromatopsia

50.1023, 52.7115, 57.4028

Achromatomaly

50.6275, 52.0271, 56.6641

CSS Examples

Text

The CSS property to change the color of the text to XYZ 51.8201, 51.3948, 55.9042 is called "color". The color property can be set on classes, ids or directly on the HTML element.

This example shows how text in the color rgb(205, 185, 190) looks like.

```
.text, #text, p{  
    color:rgb(205, 185, 190)  
}
```

If you want to add a text shadow in that color use the text-shadow property, you can generate a text shadow directly with our [CSS Text Shadow Generator](#).

Here you see how black text with a 4 pixel rgb(205, 185, 190) colored shadow looks like.

```
.shadow{ text-shadow: 4px 4px 2px rgb(205, 185, 190) }
```

Border

The CSS property to change the border of an element to XYZ 51.8201, 51.3948, 55.9042 is called "border". The border property can be set on classes, ids or directly on the HTML element.

This example shows the color as border, it can be applied via the CSS property "border" or "border-color".

```
.border, #border, table{ border:4px solid rgb(205, 185, 190) }
```


If only the border color should be changed use the property `border-color`.

```
.border{ border-color:rgb(205, 185, 190) }
```

If you want to add a box shadow in that color use:

Here you see how a box with a 4 pixel `rgb(205, 185, 190)` colored shadow looks like.

```
.boxshadow{ -moz-box-shadow:4px 4px 4px  
4px rgb(205, 185, 190); -webkit-box-  
shadow:4px 4px 4px 4px rgb(205, 185, 190);  
box-shadow:4px 4px 4px 4px rgb(205, 185,  
190) }
```

Background

The CSS property to change the background color of an element to XYZ 51.8201, 51.3948, 55.9042 is called "background". The background property can be set on classes, ids or directly on the HTML element.

```
.background, #background, body{  
background: rgb(205, 185, 190) }
```

If only the background color should be changed can be used:

```
.background{ background-color: rgb(205,  
185, 190) }
```

This example shows the color as background, it is applied via the CSS property "background".

To optimize and compress your CSS code, you can use our [online CSS compressor and optimizer](#) based on csstidy. If you want to create a linear or radial gradient as background or border, check our [CSS Gradient Generator](#).

Hey! You found this booklet interesting? Support Converting Colors with the new Membership Option!

The pro membership hides all ads, plus gives you double the colors in the color bucket, and more awesome pro features!

[Learn more, Memberships starting at \\$2.50/m!](#)

**Follow me
on Twitter!**

@ConvertingColor