

Converting Colors

XYZ(51.9529, 50.6129, 57.7777)

Have a look what the booklet for
XYZ(51.9529, 50.6129, 57.7777)
contains.

XYZ(51.9192, 50.4728, 58.0447)	3
<i>Conversions</i>	4
<i>Details</i>	6
<i>Harmonies</i>	12
<i>Previews</i>	24
<i>Color Blindness Simulation</i>	28
<i>CSS Examples</i>	31

Color

**XYZ(51.9192, 50.4728,
58.0447)**

Conversions

Conversions Part 1

Format	Color
Hex	CEB6C2
RGB	206, 182, 194
RGB Percent	81%, 71%, 76%
CMY	0.1922, 0.2863, 0.2392
CMYK	0.00, 0.12, 0.06, 0.19
HSL	330°, 20%, 76%
HSV	330°, 12%, 81%
XYZ	51.9192, 50.4728, 58.0447
YIQ	190.5440, 10.4520, 8.8200

Conversions

Conversions Part 2

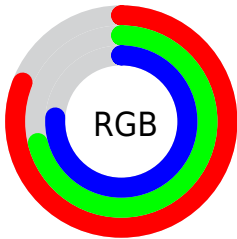
Format	Color
R _Y B	206, 182, 194
Decimal	13547202
CIE Lab	76.36, 10.63, -2.93
CIE LCh	76, 11.026, 344.596
Yxy	50.4728, 0.3236, 0.3146
Android (android.graphics.Color)	4291737282 (0xFFCEB6C2)
YUV	190.5440, 1.7038, 13.5549
Hunter-Lab	71.0442, 6.1207, 1.2897

Details

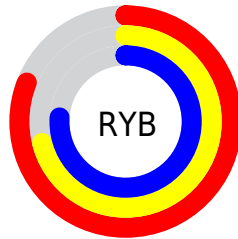
The XYZ color **51.9192, 50.4728, 58.0447** is a light color, and the websafe version is hex **CCCCCC**. A complement of this color would be **51.1023, 57.9842, 59.5406**, and the grayscale version is **49.2448, 51.8094, 56.4204**.

A 20% lighter version of the original color is **89.0699, 89.3112, 102.9868**, and **25.5328, 24.2694, 28.1497** is the 20% darker color. If you saturate the color by 10%, you get **46.8899, 42.2016, 50.8568**, and if you desaturate by 10%, it is **57.6522, 60.0217, 65.8642**.

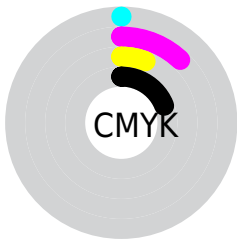
Distribution



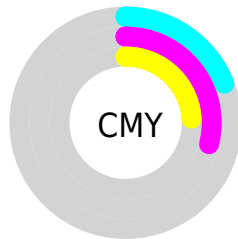
- Red (81%)
- Green (71%)
- Blue (76%)



- Red (81%)
- Yellow (71%)
- Blue (76%)



- Cyan (0%)
- Magenta (12%)
- Yellow (6%)
- Black (19%)



- Cyan (19%)
- Magenta (29%)
- Yellow (24%)

Brightness & Saturation Gradients

These gradients show how the XYZ color 51.9192, 50.4728, 58.0447 changes by changing the brightness by 10 percent. The first figure shows a shift by +10% for each color and the second figure -10%.

Similar to the brightness gradients but the following saturation gradients show a change of the XYZ color 51.9192, 50.4728, 58.0447 by changing the saturation by 10% instead.

■ 51.9192, 50.4728,
58.0447

■ 51.9192, 50.4728,
58.0447

384.4537,
388.5120, 434.9554

■ 37.1647, 35.7892,
41.4296

■ 92.1870, 90.8750,
103.5034

■ 25.5093, 24.2714,
28.3327

118.4310,
117.3624, 133.1841

■ 16.5876, 15.5351,
18.3354

149.2355,
148.5532, 168.0571

■ 10.0344, 9.1958,
11.0191

184.9659,
184.8318, 208.5409

■ 5.4842, 4.8691,
5.9654

225.9876,
226.5826, 255.0541

■ 2.5717, 2.1707,
2.7556

272.6659,

■ 0.9316, 0.7039,

274.1900, 308.0152

0.9712

325.3661,
328.0383, 367.8428

■ 0.0000, 0.0000,
0.0000

■ 51.9192, 50.4728,
58.0447

■ 51.9192, 50.4728,
58.0447

■ 46.8899, 42.2016,
50.8568

■ 57.6522, 60.0217,
65.8642

■ 42.5314, 35.1468,
44.2796

■ 64.1115, 70.8931,
74.3286

■ 38.8145, 29.2520,
38.2960

■ 71.3239, 83.1374,
83.4551

■ 35.7061, 24.4538,
32.8862

■ 76.2394, 90.6522,
92.2343

■ 33.1698, 20.6824,
28.0295

■ 77.7733, 91.2657,
100.3116

■ 31.1654, 17.8602,
23.7032

■ 79.2639, 91.8620,
108.1612

■ 29.6468, 15.8981,
19.8825

■ 28.5593, 14.6899,
16.5393

■ 27.9013, 14.1009,
14.0790

Harmonies

Analogous

The Analogous color harmony consists of three colors that are next to each other on the color wheel.



50.8262, 50.4728, 63.4925



51.9192, 50.4728, 58.0447



51.9345, 50.4728, 52.1295

Triad

The Triadic color harmony groups three colors that are evenly spaced from another and form a triangle on the color wheel.



51.9192, 50.4728, 58.0447



46.9754, 50.4728, 44.6328



45.1902, 50.4728, 63.3671

Complementary

The Complementary color scheme is a pair of colors which are on the opposite of each other on the color wheel.



51.9192, 50.4728, 58.0447



51.1023, 57.9842, 59.5406

Split Complementary

Split-complementary colors differ from the complementary color scheme. The scheme consists of three colors, the original color and two neighbors of the complement color.



44.2180, 50.4728, 57.8835



51.9192, 50.4728, 58.0447



45.2284, 50.4728, 47.2217

Square

The Square scheme is like the rectangle color scheme, but the four colors are evenly spaced on the color wheel.



51.9192, 50.4728, 58.0447



49.0395, 50.4728, 44.6691



44.2318, 50.4728, 51.9794



46.9219, 50.4728, 66.7128

Rectangle

The Rectangle color scheme consists of four colors that form a rectangle on the color wheel.



51.9192, 50.4728, 58.0447



51.3294, 50.4728, 48.7262



44.2318, 50.4728, 51.9794



44.7659, 50.4728, 61.6960

Sweetspot

The Sweet Spot groups the original color and five complimentary colors.



51.9206, 50.4750, 58.0458



92.0480, 94.9718, 104.8909



50.1186, 49.3840, 65.2838



19.5343, 20.0474, 22.2251



0.0000, 0.0000, 0.0000



20.3446, 21.4041, 23.3091

Same Dimension

The Same Dimension uses a secret algorithm to generate beautiful new colors.



51.9206, 50.4750, 58.0458



81.9574, 78.2027, 91.0086



50.6269, 49.9575, 51.2331



11.4423, 11.3057, 12.8638



17.2295, 8.7024, 8.9273



0.9272, 0.4643, 0.6623

Inverse Universe

The Inverse Universe completely reimagines the original color for something new.



51.9206, 50.4750, 58.0458



81.9574, 78.2027, 91.0086



52.5049, 58.5452, 66.9263



11.4423, 11.3057, 12.8638



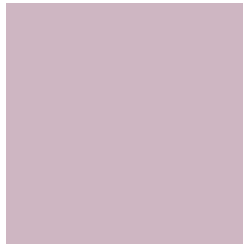
17.2295, 8.7024, 8.9273



0.9272, 0.4643, 0.6623

Previews

White Background



This preview shows how the XYZ color 51.9192, 50.4728, 58.0447 looks on a white background.

Color Contrast Check

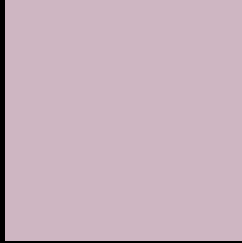
Large Text (above 18pt) WCAG AA × Fail

Any Text WCAG AA × Fail

Large Text (above 18pt) WCAG AAA × Fail

Any Text WCAG AAA × Fail

Black Background



This preview shows how the XYZ color 51.9192, 50.4728, 58.0447 looks on a black background.

Color Contrast Check

Large Text (above 18pt) WCAG AA ✓ Pass

Any Text WCAG AA ✓ Pass

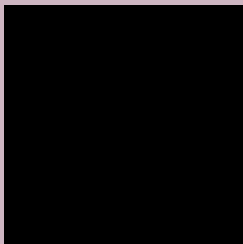
Large Text (above 18pt) WCAG AAA ✓ Pass

Any Text WCAG AAA ✓ Pass

If you want to check with other color combinations, try the [Color Contrast Checker](#).

XYZ 51.9192, 50.4728, 58.0447

Background



This preview shows how black text looks on a background with the XYZ color 51.9192, 50.4728, 58.0447.



This preview shows how white text looks on a background with the XYZ color 51.9192, 50.4728,

Color Blindness Simulation

Color vision deficiency is a very complex topic, and I could not describe the different causes any better than Wikipedia does, so if you want to learn more, you should check out their [article about color blindness](#).

Dichromacy



Original Color

51.9192, 50.4728, 58.0447

Protanopia

48.8346, 50.3907, 59.9758

Deuteranopia

51.5729, 50.5994, 58.0874



Tritanopia

52.1454, 50.5632, 59.2359

Trichromacy



Original Color

51.9192, 50.4728, 58.0447

Protanomaly

49.8184, 50.2855, 59.3049

Deuteranomaly

51.8479, 50.7412, 58.1003

Tritanomaly

52.0319, 50.5178, 58.6383

Monochromacy



Original Color

51.9192, 50.4728, 58.0447

Achromatopsia

49.5206, 52.0996, 56.7364

Achromatomaly

50.2626, 51.5080, 57.1621

CSS Examples

Text

The CSS property to change the color of the text to XYZ 51.9192, 50.4728, 58.0447 is called "color". The color property can be set on classes, ids or directly on the HTML element.

This example shows how text in the color rgb(206, 182, 194) looks like.

```
.text, #text, p{  
    color:rgb(206, 182, 194)  
}
```

If you want to add a text shadow in that color use the text-shadow property, you can generate a text shadow directly with our [CSS Text Shadow Generator](#).

Here you see how black text with a 4 pixel rgb(206, 182, 194) colored shadow looks like.

```
.shadow{ text-shadow: 4px 4px 2px rgb(206, 182, 194) }
```

Border

The CSS property to change the border of an element to XYZ 51.9192, 50.4728, 58.0447 is called "border". The border property can be set on classes, ids or directly on the HTML element.

This example shows the color as border, it can be applied via the CSS property "border" or "border-color".

```
.border, #border, table{ border:4px solid rgb(206, 182, 194) }
```


If only the border color should be changed use the property `border-color`.

```
.border{ border-color:rgb(206, 182, 194) }
```

If you want to add a box shadow in that color use:

Here you see how a box with a 4 pixel `rgb(206, 182, 194)` colored shadow looks like.

```
.boxshadow{ -moz-box-shadow:4px 4px 4px  
4px rgb(206, 182, 194); -webkit-box-  
shadow:4px 4px 4px 4px rgb(206, 182, 194);  
box-shadow:4px 4px 4px 4px rgb(206, 182,  
194) }
```

Background

The CSS property to change the background color of an element to XYZ 51.9192, 50.4728, 58.0447 is called "background". The background property can be set on classes, ids or directly on the HTML element.

```
.background, #background, body{  
background: rgb(206, 182, 194) }
```

If only the background color should be changed can be used:

```
.background{ background-color: rgb(206,  
182, 194) }
```

This example shows the color as background, it is applied via the CSS property "background".

To optimize and compress your CSS code, you can use our [online CSS compressor and optimizer](#) based on csstidy. If you want to create a linear or radial gradient as background or border, check our [CSS Gradient Generator](#).

Hey! You found this booklet interesting? Support Converting Colors with the new Membership Option!

The pro membership hides all ads, plus gives you double the colors in the color bucket, and more awesome pro features!

[Learn more, Memberships starting at \\$2.50/m!](#)

**Follow me
on Twitter!**

@ConvertingColor