

Converting Colors

XYZ(51.9978, 52.6961, 57.4868)

Have a look what the booklet for
XYZ(51.9978, 52.6961, 57.4868)
contains.

XYZ(52.0691, 52.7575, 57.3081)	3
<i>Conversions</i>	4
<i>Details</i>	6
<i>Harmonies</i>	12
<i>Previews</i>	24
<i>Color Blindness Simulation</i>	28
<i>CSS Examples</i>	31

Color

**XYZ(52.0691, 52.7575,
57.3081)**

Conversions

Conversions Part 1

Format	Color
Hex	CABDC0
RGB	202, 189, 192
RGB Percent	79%, 74%, 75%
CMY	0.2078, 0.2588, 0.2471
CMYK	0.00, 0.06, 0.05, 0.21
HSL	346°, 11%, 77%
HSV	346°, 6%, 79%
XYZ	52.0691, 52.7575, 57.3081
YIQ	193.2290, 6.7850, 3.6890

Conversions

Conversions Part 2

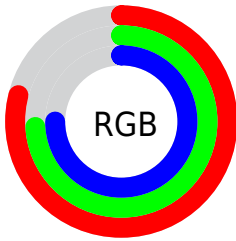
Format	Color
R _Y B	202, 189, 192
Decimal	13286848
CIE Lab	77.73, 5.10, 0.13
CIE LCh	78, 5.106, 1.431
Yxy	52.7575, 0.3211, 0.3254
Android (android.graphics.Color)	4291476928 (0xFFCABDC0)
YUV	193.2290, -0.6059, 7.6922
Hunter-Lab	72.6344, 0.8504, 4.0646

Details

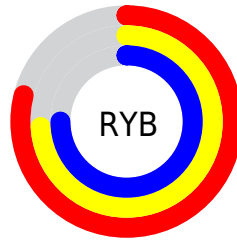
The XYZ color **52.0691, 52.7575, 57.3081** is a light color, and the websafe version is hex **CCCCCC**. A complement of this color would be **52.4175, 57.1846, 62.3105**, and the grayscale version is **50.8251, 53.4720, 58.2310**.

A 20% lighter version of the original color is **90.8357, 93.3421, 102.0362**, and **25.6771, 25.7683, 28.0465** is the 20% darker color. If you saturate the color by 10%, you get **46.3910, 44.0128, 47.3630**, and if you desaturate by 10%, it is **58.5373, 62.7899, 68.4151**.

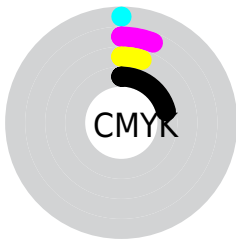
Distribution



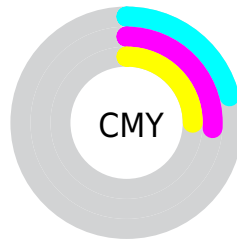
- Red (79%)
- Green (74%)
- Blue (75%)



- Red (79%)
- Yellow (74%)
- Blue (75%)



- Cyan (0%)
- Magenta (6%)
- Yellow (5%)
- Black (21%)



- Cyan (21%)
- Magenta (26%)
- Yellow (25%)

Brightness & Saturation Gradients

These gradients show how the XYZ color 52.0691, 52.7575, 57.3081 changes by changing the brightness by 10 percent. The first figure shows a shift by +10% for each color and the second figure -10%.

Similar to the brightness gradients but the following saturation gradients show a change of the XYZ color 52.0691, 52.7575, 57.3081 by changing the saturation by 10% instead.

■ 52.0691, 52.7575,
57.3081

■ 52.0691, 52.7575,
57.3081

385.0229,
397.3541, 432.1288

■ 37.2846, 37.6092,
40.8416

■ 92.4068, 94.2474,
102.4194

■ 25.6026, 25.6795,
27.8766

118.6907,
121.3579, 131.9013

■ 16.6577, 16.5841,
17.9944

149.5385,
153.2245, 166.5588

■ 10.0846, 9.9384,
10.7766

185.3155,
190.2317, 206.8104

■ 5.5178, 5.3581,
5.8045

226.3871,
232.7638, 253.0747

■ 2.5920, 2.4589,
2.6597

273.1186,

■ 0.9419, 0.8559,

281.2054, 305.7702

0.9231

325.8754,
335.9406, 365.3154

■ 0.0000, 0.0000,
0.0000

■ 52.0691, 52.7575,
57.3081

■ 52.0691, 52.7575,
57.3081

■ 46.3910, 44.0128,
47.3630

■ 58.5373, 62.7899,
68.4151

■ 41.4680, 36.4970,
38.5386

■ 65.8198, 74.1521,
80.7168

■ 37.2691, 30.1567,
30.7960

■ 73.9456, 86.8928,
94.2488

■ 33.7595, 24.9322,
24.0929

■ 78.0342, 91.2434,
107.4087

■ 30.9012, 20.7584,
18.3841

■ 78.1674, 91.2967,
108.1099

■ 28.6527, 17.5633,
13.6209

■ 26.9674, 15.2661,
9.7503

■ 25.7917, 13.7724,
6.7138

■ 25.0581, 12.9621,
4.4441

Harmonies

Analogous

The Analogous color harmony consists of three colors that are next to each other on the color wheel.



51.8327, 52.7575, 60.0873



52.0691, 52.7575, 57.3081



51.7842, 52.7575, 54.6512

Triad

The Triadic color harmony groups three colors that are evenly spaced from another and form a triangle on the color wheel.



52.0691, 52.7575, 57.3081



49.1595, 52.7575, 52.9222



49.2407, 52.7575, 62.3597

Complementary

The Complementary color scheme is a pair of colors which are on the opposite of each other on the color wheel.



52.0691, 52.7575, 57.3081



52.4175, 57.1846, 62.3105

Split Complementary

Split-complementary colors differ from the complementary color scheme. The scheme consists of three colors, the original color and two neighbors of the complement color.



48.5396, 52.7575, 60.3303



52.0691, 52.7575, 57.3081



48.4932, 52.7575, 54.8793

Square

The Square scheme is like the rectangle color scheme, but the four colors are evenly spaced on the color wheel.



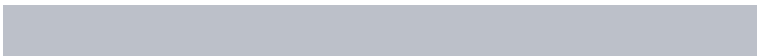
52.0691, 52.7575, 57.3081



50.0970, 52.7575, 52.1710



48.2678, 52.7575, 57.5800



50.1919, 52.7575, 63.0608

Rectangle

The Rectangle color scheme consists of four colors that form a rectangle on the color wheel.



52.0691, 52.7575, 57.3081



51.3391, 52.7575, 53.2912



48.2678, 52.7575, 57.5800



48.9684, 52.7575, 61.8070

Sweetspot

The Sweet Spot groups the original color and five complimentary colors.



52.0706, 52.7598, 57.3092



92.8191, 96.5389, 105.0713



52.4042, 52.7994, 63.3070



19.8905, 20.6995, 22.5298



0.0000, 0.0000, 0.0000



20.3446, 21.4041, 23.3091

Same Dimension

The Same Dimension uses a secret algorithm to generate beautiful new colors.



52.0706, 52.7598, 57.3092



86.4588, 86.6978, 94.0743



52.4963, 54.1372, 55.8296



11.3165, 11.2553, 12.2015



16.0269, 8.2213, 2.5944



0.8569, 0.4362, 0.2923

Inverse Universe

The Inverse Universe completely reimagines the original color for something new.



52.0706, 52.7598, 57.3092



86.4588, 86.6978, 94.0743



51.9649, 55.7171, 63.8933



11.3165, 11.2553, 12.2015



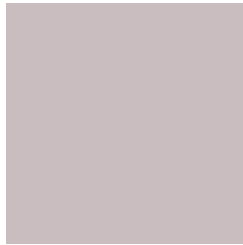
16.0269, 8.2213, 2.5944



0.8569, 0.4362, 0.2923

Previews

White Background



This preview shows how the XYZ color 52.0691, 52.7575, 57.3081 looks on a white background.

Color Contrast Check

Large Text (above 18pt) WCAG AA × Fail

Any Text WCAG AA × Fail

Large Text (above 18pt) WCAG AAA × Fail

Any Text WCAG AAA × Fail

Black Background



This preview shows how the XYZ color 52.0691, 52.7575, 57.3081 looks on a black background.

Color Contrast Check

Large Text (above 18pt) WCAG AA ✓ Pass

Any Text WCAG AA ✓ Pass

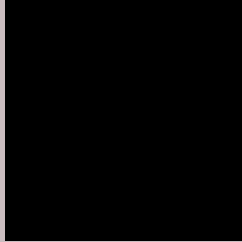
Large Text (above 18pt) WCAG AAA ✓ Pass

Any Text WCAG AAA ✓ Pass

If you want to check with other color combinations, try the [Color Contrast Checker](#).

XYZ 52.0691, 52.7575, 57.3081

Background



This preview shows how black text looks on a background with the XYZ color 52.0691, 52.7575, 57.3081.



This preview shows how white text looks on a background with the XYZ color 52.0691, 52.7575,

Color Blindness Simulation

Color vision deficiency is a very complex topic, and I could not describe the different causes any better than Wikipedia does, so if you want to learn more, you should check out their [article about color blindness](#).

Dichromacy



Original Color

52.0691, 52.7575, 57.3081

Protanopia

50.7621, 52.7140, 57.9514

Deuteranopia

53.7629, 52.6697, 57.7847



Tritanopia

53.0596, 52.5014, 63.2144

Trichromacy



Original Color

52.0691, 52.7575, 57.3081

Protanomaly

51.3278, 52.6829, 57.9156

Deuteranomaly

53.1281, 52.6563, 57.8156

Tritanomaly

52.8049, 52.7402, 60.8228

Monochromacy



Original Color

52.0691, 52.7575, 57.3081

Achromatopsia

50.6879, 53.3276, 58.0738

Achromatomaly

51.2402, 53.2853, 58.0365

CSS Examples

Text

The CSS property to change the color of the text to XYZ 52.0691, 52.7575, 57.3081 is called "color". The color property can be set on classes, ids or directly on the HTML element.

This example shows how text in the color rgb(202, 189, 192) looks like.

```
.text, #text, p{  
    color:rgb(202, 189, 192)  
}
```

If you want to add a text shadow in that color use the text-shadow property, you can generate a text shadow directly with our [CSS Text Shadow Generator](#).

Here you see how black text with a 4 pixel rgb(202, 189, 192) colored shadow looks like.

```
.shadow{ text-shadow: 4px 4px 2px rgb(202, 189, 192) }
```

Border

The CSS property to change the border of an element to XYZ 52.0691, 52.7575, 57.3081 is called "border". The border property can be set on classes, ids or directly on the HTML element.

This example shows the color as border, it can be applied via the CSS property "border" or "border-color".

```
.border, #border, table{ border:4px solid rgb(202, 189, 192) }
```


If only the border color should be changed use the property `border-color`.

```
.border{ border-color:rgb(202, 189, 192) }
```

If you want to add a box shadow in that color use:

Here you see how a box with a 4 pixel `rgb(202, 189, 192)` colored shadow looks like.

```
.boxshadow{ -moz-box-shadow:4px 4px 4px  
4px rgb(202, 189, 192); -webkit-box-  
shadow:4px 4px 4px 4px rgb(202, 189, 192);  
box-shadow:4px 4px 4px 4px rgb(202, 189,  
192) }
```

Background

The CSS property to change the background color of an element to XYZ 52.0691, 52.7575, 57.3081 is called "background". The background property can be set on classes, ids or directly on the HTML element.

```
.background, #background, body{  
background: rgb(202, 189, 192) }
```

If only the background color should be changed can be used:

```
.background{ background-color: rgb(202,  
189, 192) }
```

This example shows the color as background, it is applied via the CSS property "background".

To optimize and compress your CSS code, you can use our [online CSS compressor and optimizer](#) based on csstidy. If you want to create a linear or radial gradient as background or border, check our [CSS Gradient Generator](#).

Hey! You found this booklet interesting? Support Converting Colors with the new Membership Option!

The pro membership hides all ads, plus gives you double the colors in the color bucket, and more awesome pro features!

[Learn more, Memberships starting at \\$2.50/m!](#)

**Follow me
on Twitter!**

@ConvertingColor