

Converting Colors

XYZ(52.0228, 51.6655, 48.0779)

Have a look what the booklet for
XYZ(52.0228, 51.6655, 48.0779)
contains.

XYZ(52.0494, 51.6814, 48.3065)	3
<i>Conversions</i>	4
<i>Details</i>	6
<i>Harmonies</i>	12
<i>Previews</i>	24
<i>Color Blindness Simulation</i>	28
<i>CSS Examples</i>	31

Color

**XYZ(52.0494, 51.6814,
48.3065)**

Conversions

Conversions Part 1

Format	Color
Hex	D3B9B0
RGB	211, 185, 176
RGB Percent	83%, 73%, 69%
CMY	0.1725, 0.2745, 0.3098
CMYK	0.00, 0.12, 0.17, 0.17
HSL	15°, 28%, 76%
HSV	15°, 17%, 83%
XYZ	52.0494, 51.6814, 48.3065
YIQ	191.7480, 18.3850, 2.7130

Conversions

Conversions Part 2

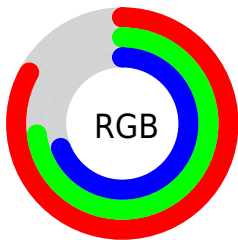
Format	Color
R _Y B	211, 188, 176
Decimal	13875632
CIE Lab	77.09, 7.82, 7.96
CIE LCh	77, 11.159, 45.520
Yxy	51.6814, 0.3423, 0.3399
Android (android.graphics.Color)	4292065712 (0xFFD3B9B0)
YUV	191.7480, -7.7638, 16.8840
Hunter-Lab	71.8898, 3.4299, 10.4828

Details

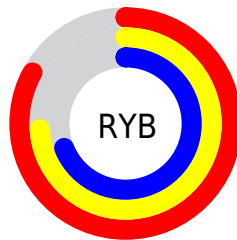
The XYZ color **52.0494, 51.6814, 48.3065** is a light color, and the websafe version is hex **CCCCCC**. A complement of this color would be **50.7825, 56.1730, 69.7944**, and the grayscale version is **49.9935, 52.5970, 57.2781**.

A 20% lighter version of the original color is **87.2608, 89.9968, 89.1159**, and **25.5997, 25.0257, 22.5500** is the 20% darker color. If you saturate the color by 10%, you get **47.0223, 44.7123, 37.1189**, and if you desaturate by 10%, it is **57.7653, 59.5077, 61.3259**.

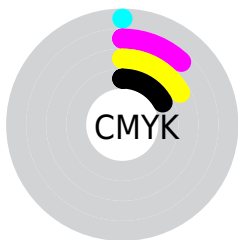
Distribution



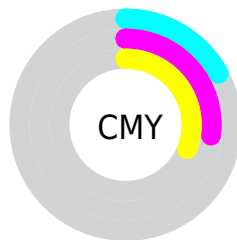
- Red (83%)
- Green (73%)
- Blue (69%)



- Red (83%)
- Yellow (74%)
- Blue (69%)



- Cyan (0%)
- Magenta (12%)
- Yellow (17%)
- Black (17%)



- Cyan (17%)
- Magenta (27%)
- Yellow (31%)

Brightness & Saturation Gradients

These gradients show how the XYZ color 52.0494, 51.6814, 48.3065 changes by changing the brightness by 10 percent. The first figure shows a shift by +10% for each color and the second figure -10%.

Similar to the brightness gradients but the following saturation gradients show a change of the XYZ color 52.0494, 51.6814, 48.3065 by changing the saturation by 10% instead.

■ 52.0494, 51.6814,
48.3065

■ 52.0494, 51.6814,
48.3065

384.9481,
393.2054, 396.5494

■ 37.2689, 36.7512,
33.7080

■ 92.3779, 92.6612,
89.0309

■ 25.5904, 25.0149,
22.3938

118.6566,
119.4796, 115.9938

■ 16.6485, 16.0882,
13.9455

149.4987,
151.0295, 147.9152

■ 10.0780, 9.5866,
7.9444

185.2696,
187.6953, 185.2138

■ 5.5133, 5.1257,
3.9721

226.3346,
229.8614, 228.3079

■ 2.5893, 2.3212,
1.6101

273.0591,

■ 0.9405, 0.7849,

277.9122, 277.6162

0.2980

325.8085,
332.2320, 333.5572

■ 0.0000, 0.0000,
0.0000

■ 52.0494, 51.6814,
48.3065

■ 52.0494, 51.6814,
48.3065

■ 47.0223, 44.7123,
37.1189

■ 57.7653, 59.5077,
61.3259

■ 42.6532, 38.5642,
27.6772

■ 64.1908, 68.2123,
76.2511

■ 38.9149, 33.2084,
19.8936

■ 71.3513, 77.8238,
93.1560

■ 35.7771, 28.6119,
13.6710

■ 78.3872, 88.0151,
107.4649

■ 33.2063, 24.7392,
8.9026

■ 80.6742, 92.5890,
108.2272

■ 31.1659, 21.5518,
5.4676

■ 29.6140, 19.0074,
3.2256

■ 28.5001, 17.0578,
1.9971

■ 28.1965, 16.5136,
1.7013

Harmonies

Analogous

The Analogous color harmony consists of three colors that are next to each other on the color wheel.



53.1772, 51.6814, 53.1898



52.0494, 51.6814, 48.3065



50.1535, 51.6814, 45.6559

Triad

The Triadic color harmony groups three colors that are evenly spaced from another and form a triangle on the color wheel.



52.0494, 51.6814, 48.3065



45.2595, 51.6814, 53.3882



50.2264, 51.6814, 68.3558

Complementary

The Complementary color scheme is a pair of colors which are on the opposite of each other on the color wheel.



52.0494, 51.6814, 48.3065



50.7825, 56.1730, 69.7944

Split Complementary

Split-complementary colors differ from the complementary color scheme. The scheme consists of three colors, the original color and two neighbors of the complement color.



48.1040, 51.6814, 68.4186



52.0494, 51.6814, 48.3065



45.2777, 51.6814, 59.4716

Square

The Square scheme is like the rectangle color scheme, but the four colors are evenly spaced on the color wheel.



52.0494, 51.6814, 48.3065



46.2552, 51.6814, 48.4427



46.3057, 51.6814, 65.0688



52.1041, 51.6814, 64.9030

Rectangle

The Rectangle color scheme consists of four colors that form a rectangle on the color wheel.



52.0494, 51.6814, 48.3065



48.7285, 51.6814, 45.3795



46.3057, 51.6814, 65.0688



49.5169, 51.6814, 68.7820

Sweetspot

The Sweet Spot groups the original color and five complimentary colors.



52.0508, 51.6837, 48.3076



90.1176, 93.3118, 97.4627



53.0802, 49.1763, 62.7273



19.1453, 19.7774, 20.5300



0.0000, 0.0000, 0.0000



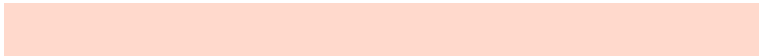
20.3446, 21.4041, 23.3091

Same Dimension

The Same Dimension uses a secret algorithm to generate beautiful new colors.



52.0508, 51.6837, 48.3076



76.9829, 75.3073, 67.6051



55.8802, 59.3425, 49.5841



12.0524, 12.2956, 12.3501



17.0871, 10.1072, 1.0503



1.0205, 0.6953, 0.0804

Inverse Universe

The Inverse Universe completely reimagines the original color for something new.



50.7825, 56.1730, 69.7944



74.6682, 83.4902, 106.7875



46.9597, 48.5274, 68.5201



11.8902, 12.8707, 15.1013



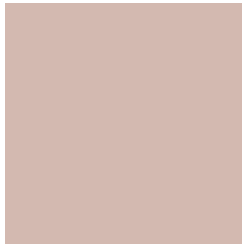
14.4299, 17.5065, 39.8110



0.8688, 1.1027, 2.2466

Previews

White Background



This preview shows how the XYZ color 52.0494, 51.6814, 48.3065 looks on a white background.

Color Contrast Check

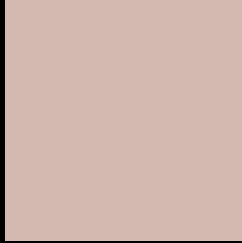
Large Text (above 18pt) WCAG AA × Fail

Any Text WCAG AA × Fail

Large Text (above 18pt) WCAG AAA × Fail

Any Text WCAG AAA × Fail

Black Background



This preview shows how the XYZ color 52.0494, 51.6814, 48.3065 looks on a black background.

Color Contrast Check

Large Text (above 18pt) WCAG AA ✓ Pass

Any Text WCAG AA ✓ Pass

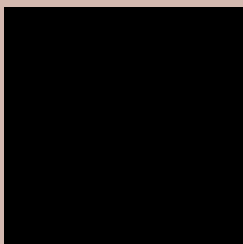
Large Text (above 18pt) WCAG AAA ✓ Pass

Any Text WCAG AAA ✓ Pass

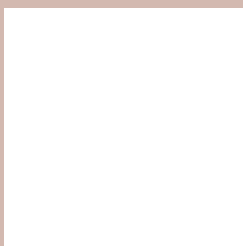
If you want to check with other color combinations, try the [Color Contrast Checker](#).

XYZ 52.0494, 51.6814, 48.3065

Background



This preview shows how black text looks on a background with the XYZ color 52.0494, 51.6814, 48.3065.



This preview shows how white text looks on a background with the XYZ color 52.0494, 51.6814,

48.3065.

Color Blindness Simulation

Color vision deficiency is a very complex topic, and I could not describe the different causes any better than Wikipedia does, so if you want to learn more, you should check out their [article about color blindness](#).

Dichromacy



Original Color

52.0494, 51.6814, 48.3065

Protanopia

49.5761, 51.9519, 50.0626

Deuteranopia

52.7085, 51.7117, 48.2776



Tritanopia

54.4233, 51.7376, 59.3425

Trichromacy



Original Color

52.0494, 51.6814, 48.3065

Protanomaly

50.3762, 51.7373, 49.4507

Deuteranomaly

52.4175, 51.5617, 48.2640

Tritanomaly

53.5594, 51.6872, 55.2979

Monochromacy



Original Color

52.0494, 51.6814, 48.3065

Achromatopsia

50.1023, 52.7115, 57.4028

Achromatomaly

50.6137, 52.0825, 53.8397

CSS Examples

Text

The CSS property to change the color of the text to XYZ 52.0494, 51.6814, 48.3065 is called "color". The color property can be set on classes, ids or directly on the HTML element.

This example shows how text in the color `rgb(211, 185, 176)` looks like.

```
.text, #text, p{  
    color:rgb(211, 185, 176)  
}
```

If you want to add a text shadow in that color use the text-shadow property, you can generate a text shadow directly with our [CSS Text Shadow Generator](#).

Here you see how black text with a 4 pixel rgb(211, 185, 176) colored shadow looks like.

```
.shadow{ text-shadow: 4px 4px 2px rgb(211, 185, 176) }
```

Border

The CSS property to change the border of an element to XYZ 52.0494, 51.6814, 48.3065 is called "border". The border property can be set on classes, ids or directly on the HTML element.

This example shows the color as border, it can be applied via the CSS property "border" or "border-color".

```
.border, #border, table{ border:4px solid rgb(211, 185, 176) }
```


If only the border color should be changed use the property `border-color`.

```
.border{ border-color:rgb(211, 185, 176) }
```

If you want to add a box shadow in that color use:

Here you see how a box with a 4 pixel `rgb(211, 185, 176)` colored shadow looks like.

```
.boxshadow{ -moz-box-shadow:4px 4px 4px  
4px rgb(211, 185, 176); -webkit-box-  
shadow:4px 4px 4px 4px rgb(211, 185, 176);  
box-shadow:4px 4px 4px 4px rgb(211, 185,  
176) }
```

Background

The CSS property to change the background color of an element to XYZ 52.0494, 51.6814, 48.3065 is called "background". The background property can be set on classes, ids or directly on the HTML element.

```
.background, #background, body{  
background: rgb(211, 185, 176) }
```

If only the background color should be changed can be used:

```
.background{ background-color: rgb(211,  
185, 176) }
```

This example shows the color as background, it is applied via the CSS property "background".

To optimize and compress your CSS code, you can use our [online CSS compressor and optimizer](#) based on csstidy. If you want to create a linear or radial gradient as background or border, check our [CSS Gradient Generator](#).

Hey! You found this booklet interesting? Support Converting Colors with the new Membership Option!

The pro membership hides all ads, plus gives you double the colors in the color bucket, and more awesome pro features!

[Learn more, Memberships starting at \\$2.50/m!](#)

**Follow me
on Twitter!**

@ConvertingColor