

Converting Colors

XYZ(52.0282, 53.6103, 47.5794)

Have a look what the booklet for
XYZ(52.0282, 53.6103, 47.5794)
contains.

XYZ(52.0029, 53.5830, 47.6461)	3
<i>Conversions</i>	4
<i>Details</i>	6
<i>Harmonies</i>	12
<i>Previews</i>	24
<i>Color Blindness Simulation</i>	28
<i>CSS Examples</i>	31

Color

**XYZ(52.0029, 53.5830,
47.6461)**

Conversions

Conversions Part 1

Format	Color
Hex	CFBFAE
RGB	207, 191, 174
RGB Percent	81%, 75%, 68%
CMY	0.1882, 0.2510, 0.3176
CMYK	0.00, 0.08, 0.16, 0.19
HSL	31°, 26%, 75%
HSV	31°, 16%, 81%
XYZ	52.0029, 53.5830, 47.6461
YIQ	193.8460, 14.9930, -1.8950

Conversions

Conversions Part 2

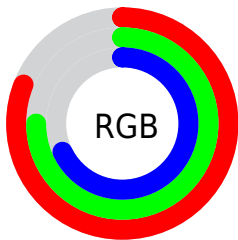
Format	Color
R _Y B	205, 207, 174
Decimal	13615022
CIE Lab	78.22, 2.83, 10.60
CIE LCh	78, 10.977, 75.036
Yxy	53.5830, 0.3394, 0.3497
Android (android.graphics.Color)	4291805102 (0xFFCFBFAE)
YUV	193.8460, -9.7841, 11.5361
Hunter-Lab	73.2004, -1.2911, 12.6485

Details

The XYZ color **52.0029, 53.5830, 47.6461** is a light color, and the websafe version is hex **CCCCCC**. A complement of this color would be **47.1312, 50.3295, 66.2624**, and the grayscale version is **51.2381, 53.9065, 58.7042**.

A 20% lighter version of the original color is **88.6436, 93.4387, 87.4922**, and **25.5502, 26.2575, 22.1339** is the 20% darker color. If you saturate the color by 10%, you get **48.0250, 48.6115, 37.1194**, and if you desaturate by 10%, it is **56.4446, 58.9836, 59.8630**.

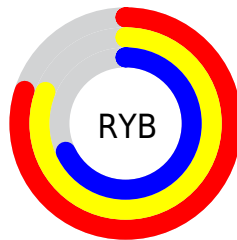
Distribution



Red (81%)

Green (75%)

Blue (68%)



Red (80%)

Yellow (81%)

Blue (68%)

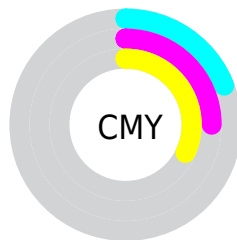


Cyan (0%)

Magenta (8%)

Yellow (16%)

Black (19%)



Cyan (19%)

Magenta (25%)

Yellow (32%)

Brightness & Saturation Gradients

These gradients show how the XYZ color 52.0029, 53.5830, 47.6461 changes by changing the brightness by 10 percent. The first figure shows a shift by +10% for each color and the second figure -10%.

Similar to the brightness gradients but the following saturation gradients show a change of the XYZ color 52.0029, 53.5830, 47.6461 by changing the saturation by 10% instead.

■ 52.0029, 53.5830,
47.6461

■ 52.0029, 53.5830,
47.6461

384.7716,
400.5179, 393.8558

■ 37.2317, 38.2684,
33.1887

■ 92.3097, 95.4617,
88.0373

■ 25.5614, 26.1911,
21.9988

118.5760,
122.7946, 114.8082

■ 16.6268, 16.9666,
13.6577

149.4047,
154.9023, 146.5207

■ 10.0624, 10.2107,
7.7469

185.1611,
192.1693, 183.5933

■ 5.5029, 5.5389,
3.8480

226.2107,
234.9800, 226.4446

■ 2.5830, 2.5668,
1.5423

272.9187,

■ 0.9373, 0.9100,

283.7187, 275.4931

0.2492

325.6506,
338.7699, 331.1573

■ 0.0000, 0.0000,
0.0000

■ 52.0029, 53.5830,
47.6461

■ 52.0029, 53.5830,
47.6461

■ 48.0250, 48.6115,
37.1194

■ 56.4446, 58.9836,
59.8630

■ 44.4896, 44.0502,
28.2038

■ 61.3621, 64.8172,
73.8377

■ 41.3795, 39.8892,
20.8189

■ 66.7720, 71.0967,
89.6381

■ 38.6750, 36.1157,
14.8757

■ 72.3975, 77.7159,
105.7927

■ 36.3544, 32.7155,
10.2763

■ 75.2892, 83.4993,
106.7565

■ 34.3935, 29.6736,
6.9100

■ 78.3445, 89.6099,
107.7750

■ 32.7646, 26.9732,
4.6484

■ 79.5423, 92.0055,
108.1743

■ 31.4339, 24.5949,
3.3318

■ 30.9549, 23.7106,
2.9451

Harmonies

Analogous

The Analogous color harmony consists of three colors that are next to each other on the color wheel.



53.9036, 53.5830, 50.3680



52.0029, 53.5830, 47.6461



49.8652, 53.5830, 47.6494

Triad

The Triadic color harmony groups three colors that are evenly spaced from another and form a triangle on the color wheel.



52.0029, 53.5830, 47.6461



47.0438, 53.5830, 61.4651



53.9073, 53.5830, 67.1064

Complementary

The Complementary color scheme is a pair of colors which are on the opposite of each other on the color wheel.



52.0029, 53.5830, 47.6461



47.1312, 50.3295, 66.2624

Split Complementary

Split-complementary colors differ from the complementary color scheme. The scheme consists of three colors, the original color and two neighbors of the complement color.



52.0079, 53.5830, 70.5271



52.0029, 53.5830, 47.6461



48.0660, 53.5830, 67.1178

Square

The Square scheme is like the rectangle color scheme, but the four colors are evenly spaced on the color wheel.



52.0029, 53.5830, 47.6461



47.0425, 53.5830, 55.3417



49.8701, 53.5830, 70.5314



55.0239, 53.5830, 61.4505

Rectangle

The Rectangle color scheme consists of four colors that form a rectangle on the color wheel.



52.0029, 53.5830, 47.6461



48.5948, 53.5830, 49.1844



49.8701, 53.5830, 70.5314



53.3369, 53.5830, 68.5728

Sweetspot

The Sweet Spot groups the original color and five complimentary colors.



52.0043, 53.5854, 47.6472



91.1246, 95.3258, 97.7983



50.2178, 47.2778, 55.4816



19.3897, 20.2661, 20.6114



0.0000, 0.0000, 0.0000



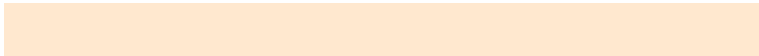
20.3446, 21.4041, 23.3091

Same Dimension

The Same Dimension uses a secret algorithm to generate beautiful new colors.



52.0043, 53.5854, 47.6472



81.1678, 83.1836, 70.5215



55.6854, 60.9475, 48.8743



12.3053, 12.8013, 12.4344



19.5980, 15.1291, 1.8873



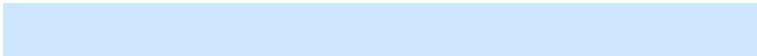
1.1751, 1.0045, 0.1320

Inverse Universe

The Inverse Universe completely reimagines the original color for something new.



47.1312, 50.3295, 66.2624



71.9631, 77.0337, 105.6839



43.8548, 43.7765, 65.1702



11.6298, 12.3500, 15.0145



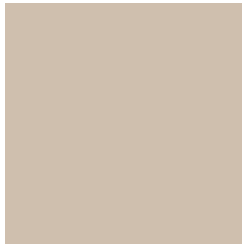
10.0815, 8.8096, 38.3616



0.6430, 0.6512, 2.1714

Previews

White Background



This preview shows how the XYZ color 52.0029, 53.5830, 47.6461 looks on a white background.

Color Contrast Check

Large Text (above 18pt) WCAG AA × Fail

Any Text WCAG AA × Fail

Large Text (above 18pt) WCAG AAA × Fail

Any Text WCAG AAA × Fail

Black Background



This preview shows how the XYZ color 52.0029, 53.5830, 47.6461 looks on a black background.

Color Contrast Check

Large Text (above 18pt) WCAG AA ✓ Pass

Any Text WCAG AA ✓ Pass

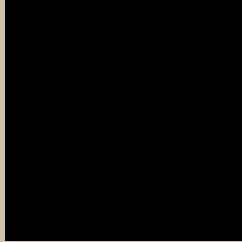
Large Text (above 18pt) WCAG AAA ✓ Pass

Any Text WCAG AAA ✓ Pass

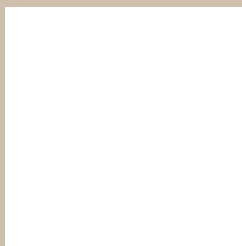
If you want to check with other color combinations, try the [Color Contrast Checker](#).

XYZ 52.0029, 53.5830, 47.6461

Background



This preview shows how black text looks on a background with the XYZ color 52.0029, 53.5830, 47.6461.



This preview shows how white text looks on a background with the XYZ color 52.0029, 53.5830,

47.6461.

Color Blindness Simulation

Color vision deficiency is a very complex topic, and I could not describe the different causes any better than Wikipedia does, so if you want to learn more, you should check out their [article about color blindness](#).

Dichromacy



Original Color

52.0029, 53.5830, 47.6461

Protanopia

50.8952, 53.6526, 48.2310

Deuteranopia

54.7216, 53.6959, 48.0376



Tritanopia

55.2950, 53.6538, 63.3190

Trichromacy



Original Color

52.0029, 53.5830, 47.6461

Protanomaly

51.2161, 53.4909, 48.1828

Deuteranomaly

53.7454, 53.5087, 48.0530

Tritanomaly

54.0760, 53.4738, 57.3405

Monochromacy



Original Color

52.0029, 53.5830, 47.6461

Achromatopsia

51.2775, 53.9479, 58.7493

Achromatomaly

51.5928, 53.8699, 54.6924

CSS Examples

Text

The CSS property to change the color of the text to XYZ 52.0029, 53.5830, 47.6461 is called "color". The color property can be set on classes, ids or directly on the HTML element.

This example shows how text in the color `rgb(207, 191, 174)` looks like.

```
.text, #text, p{  
    color:rgb(207, 191, 174)  
}
```

If you want to add a text shadow in that color use the text-shadow property, you can generate a text shadow directly with our [CSS Text Shadow Generator](#).

Here you see how black text with a 4 pixel rgb(207, 191, 174) colored shadow looks like.

```
.shadow{ text-shadow: 4px 4px 2px rgb(207, 191, 174) }
```

Border

The CSS property to change the border of an element to XYZ 52.0029, 53.5830, 47.6461 is called "border". The border property can be set on classes, ids or directly on the HTML element.

This example shows the color as border, it can be applied via the CSS property "border" or "border-color".

```
.border, #border, table{ border:4px solid rgb(207, 191, 174) }
```


If only the border color should be changed use the property `border-color`.

```
.border{ border-color:rgb(207, 191, 174) }
```

If you want to add a box shadow in that color use:

Here you see how a box with a 4 pixel `rgb(207, 191, 174)` colored shadow looks like.

```
.boxshadow{ -moz-box-shadow:4px 4px 4px  
4px rgb(207, 191, 174); -webkit-box-  
shadow:4px 4px 4px 4px rgb(207, 191, 174);  
box-shadow:4px 4px 4px 4px rgb(207, 191,  
174) }
```

Background

The CSS property to change the background color of an element to XYZ 52.0029, 53.5830, 47.6461 is called "background". The background property can be set on classes, ids or directly on the HTML element.

```
.background, #background, body{  
background: rgb(207, 191, 174) }
```

If only the background color should be changed can be used:

```
.background{ background-color: rgb(207,  
191, 174) }
```

This example shows the color as background, it is applied via the CSS property "background".

To optimize and compress your CSS code, you can use our [online CSS compressor and optimizer](#) based on csstidy. If you want to create a linear or radial gradient as background or border, check our [CSS Gradient Generator](#).

Hey! You found this booklet interesting? Support Converting Colors with the new Membership Option!

The pro membership hides all ads, plus gives you double the colors in the color bucket, and more awesome pro features!

[Learn more, Memberships starting at \\$2.50/m!](#)

**Follow me
on Twitter!**

@ConvertingColor