

Converting Colors

XYZ(52.0315, 51.9044, 46.1055)

Have a look what the booklet for
XYZ(52.0315, 51.9044, 46.1055)
contains.

XYZ(52.1567, 52.0934, 46.3358)	3
<i>Conversions</i>	4
<i>Details</i>	6
<i>Harmonies</i>	12
<i>Previews</i>	24
<i>Color Blindness Simulation</i>	28
<i>CSS Examples</i>	31

Color

**XYZ(52.1567, 52.0934,
46.3358)**

Conversions

Conversions Part 1

Format	Color
Hex	D4BAAC
RGB	212, 186, 172
RGB Percent	83%, 73%, 67%
CMY	0.1686, 0.2706, 0.3255
CMYK	0.00, 0.12, 0.19, 0.17
HSL	21°, 32%, 75%
HSV	21°, 19%, 83%
XYZ	52.1567, 52.0934, 46.3358
YIQ	192.1780, 19.9900, 1.1580

Conversions

Conversions Part 2

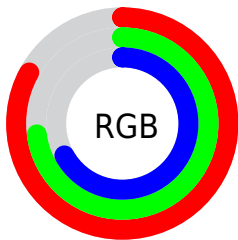
Format	Color
R _Y B	212, 194, 172
Decimal	13941420
CIE Lab	77.34, 7.04, 10.49
CIE LCh	77, 12.631, 56.150
Yxy	52.0934, 0.3464, 0.3459
Android (android.graphics.Color)	4292131500 (0xFFD4BAAC)
YUV	192.1780, -9.9478, 17.3839
Hunter-Lab	72.1758, 2.6827, 12.4597

Details

The XYZ color **52.1567, 52.0934, 46.3358** is a light color, and the websafe version is hex **CCCCCC**. A complement of this color would be **49.0907, 53.9111, 70.1064**, and the grayscale version is **50.2562, 52.8734, 57.5791**.

A 20% lighter version of the original color is **86.8573, 90.3103, 85.5268**, and **25.6823, 25.2992, 21.2989** is the 20% darker color. If you saturate the color by 10%, you get **47.5172, 45.8167, 35.5327**, and if you desaturate by 10%, it is **57.4038, 59.0646, 58.9451**.

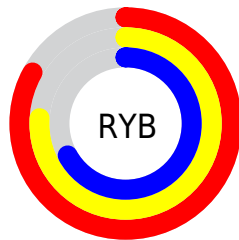
Distribution



Red (83%)

Green (73%)

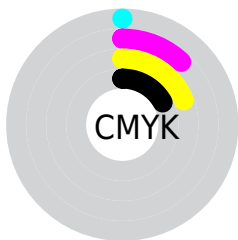
Blue (67%)



Red (83%)

Yellow (76%)

Blue (67%)

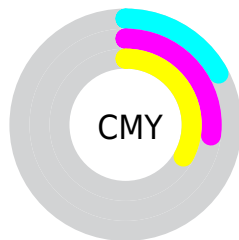


Cyan (0%)

Magenta (12%)

Yellow (19%)

Black (17%)



Cyan (17%)


Magenta (27%)


Yellow (33%)

Brightness & Saturation Gradients


These gradients show how the XYZ color 52.1567, 52.0934, 46.3358 changes by changing the brightness by 10 percent. The first figure shows a shift by +10% for each color and the second figure -10%.


Similar to the brightness gradients but the following saturation gradients show a change of the XYZ color 52.1567, 52.0934, 46.3358 by changing the saturation by 10% instead.


 52.1567, 52.0934,
46.3358

 52.1567, 52.0934,
46.3358


385.3553,
394.7971, 388.4738

 37.3548, 37.0795,
32.1603


 92.5352, 93.2690,
86.0609

 25.6572, 25.2691,
21.2181


118.8424,
120.1995, 112.4476

 16.6987, 16.2776,
13.0908


149.7154,
151.8709, 143.7418

 10.1139, 9.7208,
7.3596

185.5197,
188.6678, 180.3620

 5.5374, 5.2143,
3.6062

226.6204,
230.9745, 222.7267

 2.6038, 2.3735,
1.4119

273.3830,

 0.9479, 0.8122,

279.1753, 271.2546

0.1510

326.1729,
333.6547, 326.3641

■ 0.0000, 0.0000,
0.0000

■ 52.1567, 52.0934,
46.3358

■ 52.1567, 52.0934,
46.3358

■ 47.5172, 45.8167,
35.5327

■ 57.4038, 59.0646,
58.9451

■ 43.4578, 40.2054,
26.4490

■ 63.2762, 66.7440,
73.4354

■ 39.9550, 35.2389,
18.9955

■ 69.7960, 75.1540,
89.8813

■ 36.9821, 30.8925,
13.0737

■ 76.6915, 84.1970,
106.8173

■ 34.5097, 27.1400,
8.5741

■ 80.9281, 92.6701,
108.2295

■ 32.5053, 23.9528,
5.3727

■ 80.9616, 92.7372,
108.2407

■ 30.9315, 21.2997,
3.3235

■ 29.7342, 19.1412,
2.1964

■ 29.6152, 18.9243,
2.0919

Harmonies

Analogous

The Analogous color harmony consists of three colors that are next to each other on the color wheel.



53.8186, 52.0934, 51.0357



52.1567, 52.0934, 46.3358



49.8270, 52.0934, 44.4110

Triad

The Triadic color harmony groups three colors that are evenly spaced from another and form a triangle on the color wheel.



52.1567, 52.0934, 46.3358



45.0043, 52.0934, 55.8287



51.5971, 52.0934, 69.5748

Complementary

The Complementary color scheme is a pair of colors which are on the opposite of each other on the color wheel.



52.1567, 52.0934, 46.3358



49.0907, 53.9111, 70.1064

Split Complementary

Split-complementary colors differ from the complementary color scheme. The scheme consists of three colors, the original color and two neighbors of the complement color.



49.2007, 52.0934, 71.1180



52.1567, 52.0934, 46.3358



45.4438, 52.0934, 62.8132

Square

The Square scheme is like the rectangle color scheme, but the four colors are evenly spaced on the color wheel.



52.1567, 52.0934, 46.3358



45.7402, 52.0934, 49.6015



46.9606, 52.0934, 68.5521



53.4882, 52.0934, 64.4908

Rectangle

The Rectangle color scheme consists of four colors that form a rectangle on the color wheel.



52.1567, 52.0934, 46.3358



48.2273, 52.0934, 44.8345



46.9606, 52.0934, 68.5521



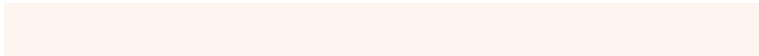
50.8218, 52.0934, 70.5418

Sweetspot

The Sweet Spot groups the original color and five complimentary colors.



52.1581, 52.0957, 46.3369



89.5931, 92.8725, 95.4087



52.0975, 47.5800, 59.8647



19.0541, 19.7176, 20.1209



0.0000, 0.0000, 0.0000



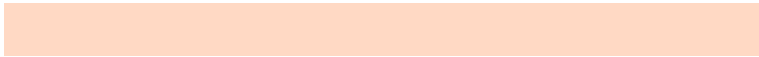
20.3446, 21.4041, 23.3091

Same Dimension

The Same Dimension uses a secret algorithm to generate beautiful new colors.



52.1581, 52.0957, 46.3369



76.0265, 74.8270, 62.8697



56.6696, 61.1188, 47.8407



12.7753, 13.1249, 13.0207



18.3681, 11.8534, 1.3198



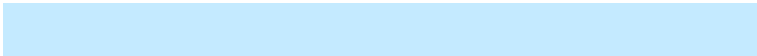
1.1843, 0.8679, 0.1051

Inverse Universe

The Inverse Universe completely reimagines the original color for something new.



49.0907, 53.9111, 70.1064



70.4620, 78.1145, 105.9716



44.8180, 45.3656, 68.6821



12.4093, 13.3420, 15.8587



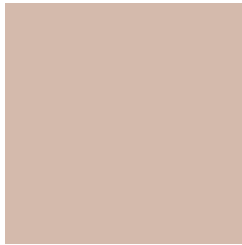
13.0247, 14.3112, 40.5290



0.8619, 1.0157, 2.4699

Previews

White Background



This preview shows how the XYZ color 52.1567, 52.0934, 46.3358 looks on a white background.

Color Contrast Check

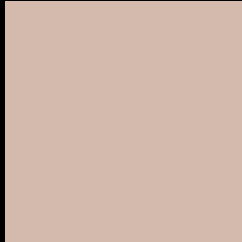
Large Text (above 18pt) WCAG AA × Fail

Any Text WCAG AA × Fail

Large Text (above 18pt) WCAG AAA × Fail

Any Text WCAG AAA × Fail

Black Background



This preview shows how the XYZ color 52.1567, 52.0934, 46.3358 looks on a black background.

Color Contrast Check

Large Text (above 18pt) WCAG AA ✓ Pass

Any Text WCAG AA ✓ Pass

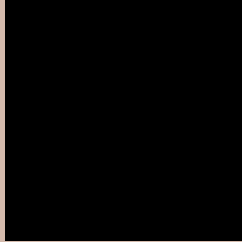
Large Text (above 18pt) WCAG AAA ✓ Pass

Any Text WCAG AAA ✓ Pass

If you want to check with other color combinations, try the [Color Contrast Checker](#).

XYZ 52.1567, 52.0934, 46.3358

Background



This preview shows how black text looks on a background with the XYZ color 52.1567, 52.0934, 46.3358.



This preview shows how white text looks on a background with the XYZ color 52.1567, 52.0934,

Color Blindness Simulation

Color vision deficiency is a very complex topic, and I could not describe the different causes any better than Wikipedia does, so if you want to learn more, you should check out their [article about color blindness](#).

Dichromacy



Original Color

52.1567, 52.0934, 46.3358

Protanopia

49.6066, 52.0250, 47.4717

Deuteranopia

53.2022, 52.0113, 46.2648



Tritanopia

54.8303, 51.9342, 59.9578

Trichromacy



Original Color

52.1567, 52.0934, 46.3358

Protanomaly

50.6423, 52.2497, 46.9512

Deuteranomaly

52.8197, 52.1236, 46.3067

Tritanomaly

53.7421, 51.7940, 54.7417

Monochromacy



Original Color

52.1567, 52.0934, 46.3358

Achromatopsia

50.1023, 52.7115, 57.4028

Achromatomaly

50.7236, 52.4718, 53.3536

CSS Examples

Text

The CSS property to change the color of the text to XYZ 52.1567, 52.0934, 46.3358 is called "color". The color property can be set on classes, ids or directly on the HTML element.

This example shows how text in the color `rgb(212, 186, 172)` looks like.

```
.text, #text, p{  
    color:rgb(212, 186, 172)  
}
```

If you want to add a text shadow in that color use the text-shadow property, you can generate a text shadow directly with our [CSS Text Shadow Generator](#).

Here you see how black text with a 4 pixel rgb(212, 186, 172) colored shadow looks like.

```
.shadow{ text-shadow: 4px 4px 2px rgb(212, 186, 172) }
```

Border

The CSS property to change the border of an element to XYZ 52.1567, 52.0934, 46.3358 is called "border". The border property can be set on classes, ids or directly on the HTML element.

This example shows the color as border, it can be applied via the CSS property "border" or "border-color".

```
.border, #border, table{ border:4px solid rgb(212, 186, 172) }
```


If only the border color should be changed use the property `border-color`.

```
.border{ border-color:rgb(212, 186, 172) }
```

If you want to add a box shadow in that color use:

Here you see how a box with a 4 pixel `rgb(212, 186, 172)` colored shadow looks like.

```
.boxshadow{ -moz-box-shadow:4px 4px 4px  
4px rgb(212, 186, 172); -webkit-box-  
shadow:4px 4px 4px 4px rgb(212, 186, 172);  
box-shadow:4px 4px 4px 4px rgb(212, 186,  
172) }
```

Background

The CSS property to change the background color of an element to XYZ 52.1567, 52.0934, 46.3358 is called "background". The background property can be set on classes, ids or directly on the HTML element.

```
.background, #background, body{  
background: rgb(212, 186, 172) }
```

If only the background color should be changed can be used:

```
.background{ background-color: rgb(212,  
186, 172) }
```

This example shows the color as background, it is applied via the CSS property "background".

To optimize and compress your CSS code, you can use our [online CSS compressor and optimizer](#) based on csstidy. If you want to create a linear or radial gradient as background or border, check our [CSS Gradient Generator](#).

Hey! You found this booklet interesting? Support Converting Colors with the new Membership Option!

The pro membership hides all ads, plus gives you double the colors in the color bucket, and more awesome pro features!

[Learn more, Memberships starting at \\$2.50/m!](#)

**Follow me
on Twitter!**

@ConvertingColor