

Converting Colors

XYZ(52.0696, 50.8940, 56.3694)

Have a look what the booklet for
XYZ(52.0696, 50.8940, 56.3694)
contains.

XYZ(52.0696, 50.8940, 56.3694)	3
<i>Conversions</i>	4
<i>Details</i>	6
<i>Harmonies</i>	12
<i>Previews</i>	24
<i>Color Blindness Simulation</i>	28
<i>CSS Examples</i>	31

Color

**XYZ(52.0696, 50.8940,
56.3694)**

Conversions

Conversions Part 1

Format	Color
Hex	CFB7BF
RGB	207, 183, 191
RGB Percent	81%, 72%, 75%
CMY	0.1882, 0.2823, 0.2510
CMYK	0.00, 0.12, 0.08, 0.19
HSL	340°, 20%, 76%
HSV	340°, 12%, 81%
XYZ	52.0696, 50.8940, 56.3694
YIQ	191.0880, 11.7360, 7.5760

Conversions

Conversions Part 2

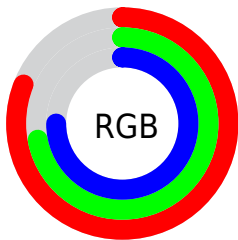
Format	Color
R_{YB}	207, 183, 191
Decimal	13612991
CIE _{Lab}	76.61, 9.92, -0.91
CIE _{LCh}	77, 9.961, 354.749
Yxy	50.8940, 0.3268, 0.3194
Android (android.graphics.Color)	4291803071 (0xFFCFB7BF)
YUV	191.0880, -0.0434, 13.9548
Hunter-Lab	71.3400, 5.4384, 3.0900

Details

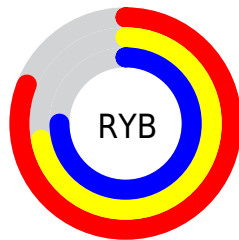
The XYZ color **52.0696, 50.8940, 56.3694** is a light color, and the websafe version is hex **CCCCCC**. A complement of this color would be **52.1521, 58.8178, 62.6400**, and the grayscale version is **49.5690, 52.1504, 56.7918**.

A 20% lighter version of the original color is **88.8950, 89.7084, 100.6259**, and **25.7069, 24.5725, 27.4328** is the 20% darker color. If you saturate the color by 10%, you get **46.6622, 42.3960, 47.4230**, and if you desaturate by 10%, it is **58.2510, 60.7095, 66.2812**.

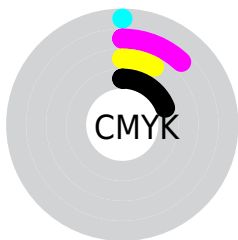
Distribution



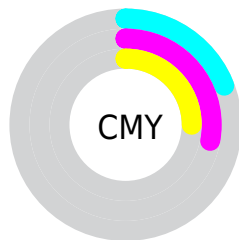
- Red (81%)
- Green (72%)
- Blue (75%)



- Red (81%)
- Yellow (72%)
- Blue (75%)



- Cyan (0%)
- Magenta (12%)
- Yellow (8%)
- Black (19%)



- Cyan (19%)
- Magenta (28%)
- Yellow (25%)

Brightness & Saturation Gradients

These gradients show how the XYZ color 52.0696, 50.8940, 56.3694 changes by changing the brightness by 10 percent. The first figure shows a shift by +10% for each color and the second figure -10%.

Similar to the brightness gradients but the following saturation gradients show a change of the XYZ color 52.0696, 50.8940, 56.3694 by changing the saturation by 10% instead.

■ 52.0696, 50.8940,
56.3694

■ 52.0696, 50.8940,
56.3694

385.0248,
390.1518, 428.5095

■ 37.2850, 36.1243,
40.0932

■ 92.4075, 91.4981,
101.0357

■ 25.6030, 24.5302,
27.2969

118.6916,
118.1012, 130.2628

■ 16.6580, 15.7274,
17.5619

149.5395,
149.4175, 164.6439

■ 10.0847, 9.3314,
10.4697

185.3167,
185.8315, 204.5977

■ 5.5179, 4.9580,
5.6018

226.3884,
227.7276, 250.5426

■ 2.5920, 2.2226,
2.5397

273.1201,

■ 0.9419, 0.7323,

275.4900, 302.8972

0.8611

325.8771,
329.5033, 362.0800

■ 0.0000, 0.0000,
0.0000

■ 52.0696, 50.8940,
56.3694

■ 52.0696, 50.8940,
56.3694

■ 46.6622, 42.3960,
47.4230

■ 58.2510, 60.7095,
66.2812

■ 41.9932, 35.1528,
39.4090

■ 65.2314, 71.8887,
77.1837

■ 38.0307, 29.1061,
32.2971

■ 73.0402, 84.4835,
89.1052

■ 34.7384, 24.1909,
26.0538

■ 78.1592, 91.4523,
100.8903

■ 32.0772, 20.3355,
20.6438

■ 79.5424, 92.0055,
108.1743

■ 30.0032, 17.4601,
16.0288

■ 28.4666, 15.4736,
12.1672

■ 27.4088, 14.2670,
9.0123

■ 26.8060, 13.6950,
6.8575

Harmonies

Analogous

The Analogous color harmony consists of three colors that are next to each other on the color wheel.



51.3911, 50.8940, 61.6186



52.0696, 50.8940, 56.3694



51.7369, 50.8940, 51.1855

Triad

The Triadic color harmony groups three colors that are evenly spaced from another and form a triangle on the color wheel.



52.0696, 50.8940, 56.3694



46.8730, 50.8940, 46.5201



46.3132, 50.8940, 64.3230

Complementary

The Complementary color scheme is a pair of colors which are on the opposite of each other on the color wheel.



52.0696, 50.8940, 56.3694



52.1521, 58.8178, 62.6400

Split Complementary

Split-complementary colors differ from the complementary color scheme. The scheme consists of three colors, the original color and two neighbors of the complement color.



45.1586, 50.8940, 59.8711



52.0696, 50.8940, 56.3694



45.4758, 50.8940, 49.6422

Square

The Square scheme is like the rectangle color scheme, but the four colors are evenly spaced on the color wheel.



52.0696, 50.8940, 56.3694



48.7054, 50.8940, 45.7158



44.8561, 50.8940, 54.4713



48.0426, 50.8940, 66.3972

Rectangle

The Rectangle color scheme consists of four colors that form a rectangle on the color wheel.



52.0696, 50.8940, 56.3694



50.9908, 50.8940, 48.4297



44.8561, 50.8940, 54.4713



45.8468, 50.8940, 63.0415

Sweetspot

The Sweet Spot groups the original color and five complimentary colors.



52.0710, 50.8962, 56.3705



91.8474, 94.8916, 103.8347



51.7509, 50.5165, 66.0552



19.4802, 20.0258, 21.9404



0.0000, 0.0000, 0.0000



20.3446, 21.4041, 23.3091

Same Dimension

The Same Dimension uses a secret algorithm to generate beautiful new colors.



52.0710, 50.8962, 56.3705



81.1014, 77.8603, 86.5009



52.0514, 52.2271, 52.1399



11.9689, 11.8723, 13.1121



16.9282, 8.6441, 4.5283



0.9830, 0.4979, 0.4455

Inverse Universe

The Inverse Universe completely reimagines the original color for something new.



52.0710, 50.8962, 56.3705



81.1014, 77.8603, 86.5009



52.1486, 57.2856, 67.3408



11.9689, 11.8723, 13.1121



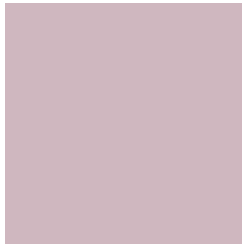
16.9282, 8.6441, 4.5283



0.9830, 0.4979, 0.4455

Previews

White Background



This preview shows how the XYZ color 52.0696, 50.8940, 56.3694 looks on a white background.

Color Contrast Check

Large Text (above 18pt) WCAG AA × Fail

Any Text WCAG AA × Fail

Large Text (above 18pt) WCAG AAA × Fail

Any Text WCAG AAA × Fail

Black Background



This preview shows how the XYZ color 52.0696, 50.8940, 56.3694 looks on a black background.

Color Contrast Check

Large Text (above 18pt) WCAG AA ✓ Pass

Any Text WCAG AA ✓ Pass

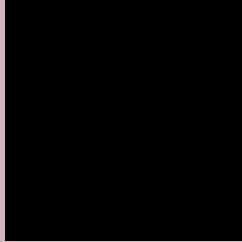
Large Text (above 18pt) WCAG AAA ✓ Pass

Any Text WCAG AAA ✓ Pass

If you want to check with other color combinations, try the [Color Contrast Checker](#).

XYZ 52.0696, 50.8940, 56.3694

Background



This preview shows how black text looks on a background with the XYZ color 52.0696, 50.8940, 56.3694.



This preview shows how white text looks on a background with the XYZ color 52.0696, 50.8940,

Color Blindness Simulation

Color vision deficiency is a very complex topic, and I could not describe the different causes any better than Wikipedia does, so if you want to learn more, you should check out their [article about color blindness](#).

Dichromacy



Original Color

52.0696, 50.8940, 56.3694

Protanopia

49.2067, 50.9378, 58.2775

Deuteranopia

51.7911, 50.7504, 56.3563



Tritanopia

52.7042, 50.8513, 59.2620

Trichromacy



Original Color

52.0696, 50.8940, 56.3694

Protanomaly

50.2105, 50.8384, 57.6185

Deuteranomaly

51.7911, 50.7504, 56.3563

Tritanomaly

52.4780, 50.7608, 58.0709

Monochromacy



Original Color

52.0696, 50.8940, 56.3694

Achromatopsia

49.5206, 52.0996, 56.7364

Achromatomaly

50.4131, 51.5983, 56.5926

CSS Examples

Text

The CSS property to change the color of the text to XYZ 52.0696, 50.8940, 56.3694 is called "color". The color property can be set on classes, ids or directly on the HTML element.

This example shows how text in the color `rgb(207, 183, 191)` looks like.

```
.text, #text, p{  
    color:rgb(207, 183, 191)  
}
```

If you want to add a text shadow in that color use the text-shadow property, you can generate a text shadow directly with our [CSS Text Shadow Generator](#).

Here you see how black text with a 4 pixel rgb(207, 183, 191) colored shadow looks like.

```
.shadow{ text-shadow: 4px 4px 2px rgb(207, 183, 191) }
```

Border

The CSS property to change the border of an element to XYZ 52.0696, 50.8940, 56.3694 is called "border". The border property can be set on classes, ids or directly on the HTML element.

This example shows the color as border, it can be applied via the CSS property "border" or "border-color".

```
.border, #border, table{ border:4px solid rgb(207, 183, 191) }
```


If only the border color should be changed use the property `border-color`.

```
.border{ border-color:rgb(207, 183, 191) }
```

If you want to add a box shadow in that color use:

Here you see how a box with a 4 pixel `rgb(207, 183, 191)` colored shadow looks like.

```
.boxshadow{ -moz-box-shadow:4px 4px 4px  
4px rgb(207, 183, 191); -webkit-box-  
shadow:4px 4px 4px 4px rgb(207, 183, 191);  
box-shadow:4px 4px 4px 4px rgb(207, 183,  
191) }
```

Background

The CSS property to change the background color of an element to XYZ 52.0696, 50.8940, 56.3694 is called "background". The background property can be set on classes, ids or directly on the HTML element.

```
.background, #background, body{  
background: rgb(207, 183, 191) }
```

If only the background color should be changed can be used:

```
.background{ background-color: rgb(207,  
183, 191) }
```

This example shows the color as background, it is applied via the CSS property "background".

To optimize and compress your CSS code, you can use our [online CSS compressor and optimizer](#) based on csstidy. If you want to create a linear or radial gradient as background or border, check our [CSS Gradient Generator](#).

Hey! You found this booklet interesting? Support Converting Colors with the new Membership Option!

The pro membership hides all ads, plus gives you double the colors in the color bucket, and more awesome pro features!

[Learn more, Memberships starting at \\$2.50/m!](#)

**Follow me
on Twitter!**

@ConvertingColor