

Converting Colors

XYZ(52.0979, 51.4080, 53.8001)

Have a look what the booklet for
XYZ(52.0979, 51.4080, 53.8001)
contains.

XYZ(52.0158, 51.2360, 53.6024)	3
<i>Conversions</i>	4
<i>Details</i>	6
<i>Harmonies</i>	12
<i>Previews</i>	24
<i>Color Blindness Simulation</i>	28
<i>CSS Examples</i>	31

Color

**XYZ(52.0158, 51.2360,
53.6024)**

Conversions

Conversions Part 1

Format	Color
Hex	D0B8BA
RGB	208, 184, 186
RGB Percent	82%, 72%, 73%
CMY	0.1843, 0.2784, 0.2706
CMYK	0.00, 0.12, 0.11, 0.18
HSL	355°, 20%, 77%
HSV	355°, 12%, 82%
XYZ	52.0158, 51.2360, 53.6024
YIQ	191.4040, 13.6620, 5.7100

Conversions

Conversions Part 2

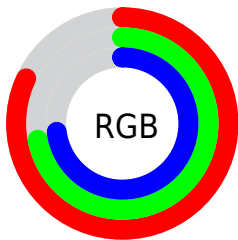
Format	Color
R _Y B	208, 184, 186
Decimal	13678778
CIE Lab	76.82, 8.89, 2.12
CIE LCh	77, 9.135, 13.401
Yxy	51.2360, 0.3316, 0.3266
Android (android.graphics.Color)	4291868858 (0xFFD0B8BA)
YUV	191.4040, -2.6642, 14.5547
Hunter-Lab	71.5793, 4.4499, 5.7060

Details

The XYZ color **52.0158, 51.2360, 53.6024** is a light color, and the websafe version is hex **CCCCCC**. A complement of this color would be **53.4655, 59.7595, 67.1121**, and the grayscale version is **49.7664, 52.3581, 57.0180**.

A 20% lighter version of the original color is **88.4271, 89.9910, 96.7138**, and **25.4868, 24.6984, 25.6143** is the 20% darker color. If you saturate the color by 10%, you get **46.1150, 42.4647, 42.2921**, and if you desaturate by 10%, it is **58.8254, 61.3906, 66.5516**.

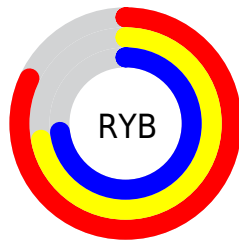
Distribution



Red (82%)

Green (72%)

Blue (73%)



Red (82%)

Yellow (72%)

Blue (73%)

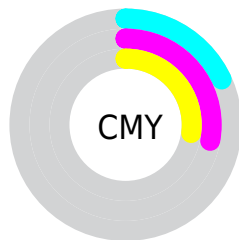


Cyan (0%)

Magenta (12%)

Yellow (11%)

Black (18%)



Cyan (18%)

Magenta (28%)

Yellow (27%)

Brightness & Saturation Gradients

These gradients show how the XYZ color 52.0158, 51.2360, 53.6024 changes by changing the brightness by 10 percent. The first figure shows a shift by +10% for each color and the second figure -10%.

Similar to the brightness gradients but the following saturation gradients show a change of the XYZ color 52.0158, 51.2360, 53.6024 by changing the saturation by 10% instead.

■ 52.0158, 51.2360,
53.6024

■ 52.0158, 51.2360,
53.6024

384.8206,
391.4800, 417.7237

■ 37.2420, 36.3965,
37.8929

■ 92.3286, 92.0035,
96.9407

■ 25.5694, 24.7405,
25.5984

118.5984,
118.7003, 125.4066

■ 16.6328, 15.8839,
16.3004

149.4308,
150.1183, 158.9616

■ 10.0667, 9.4420,
9.5803

185.1912,
186.6419, 198.0244

■ 5.5058, 5.0306,
5.0196

226.2451,
228.6554, 243.0135

■ 2.5848, 2.2652,
2.1998

272.9577,

■ 0.9382, 0.7552,

276.5434, 294.3474

0.6743

325.6944,
330.6901, 352.4446

■ 0.0000, 0.0000,
0.0000

■ 52.0158, 51.2360,
53.6024

■ 52.0158, 51.2360,
53.6024

■ 46.1150, 42.4647,
42.2921

■ 58.8254, 61.3906,
66.5516

■ 41.0804, 35.0104,
32.5524

■ 66.5753, 72.9776,
81.1981

■ 36.8724, 28.8117,
24.3145

■ 75.3012, 86.0521,
97.6013

■ 33.4468, 23.7992,
17.5038

■ 79.8227, 92.1500,
108.1874

■ 30.7551, 19.8974,
12.0390

■ 28.7433, 17.0215,
7.8305

■ 27.3503, 15.0748,
4.7781

■ 26.5034, 13.9422,
2.7660

■ 26.1162, 13.4514,
1.7628

Harmonies

Analogous

The Analogous color harmony consists of three colors that are next to each other on the color wheel.



51.9655, 51.2360, 58.5612



52.0158, 51.2360, 53.6024



51.1623, 51.2360, 49.4774

Triad

The Triadic color harmony groups three colors that are evenly spaced from another and form a triangle on the color wheel.



52.0158, 51.2360, 53.6024



46.4421, 51.2360, 49.1301



47.7515, 51.2360, 65.4524

Complementary

The Complementary color scheme is a pair of colors which are on the opposite of each other on the color wheel.



52.0158, 51.2360, 53.6024



53.4655, 59.7595, 67.1121

Split Complementary

Split-complementary colors differ from the complementary color scheme. The scheme consists of three colors, the original color and two neighbors of the complement color.



46.3146, 51.2360, 62.6121



52.0158, 51.2360, 53.6024



45.5710, 51.2360, 53.1024

Square

The Square scheme is like the rectangle color scheme, but the four colors are evenly spaced on the color wheel.



52.0158, 51.2360, 53.6024



47.9293, 51.2360, 47.0006



45.5249, 51.2360, 58.0308



49.4755, 51.2360, 65.6061

Rectangle

The Rectangle color scheme consists of four colors that form a rectangle on the color wheel.



52.0158, 51.2360, 53.6024



50.2072, 51.2360, 47.6737



45.5249, 51.2360, 58.0308



47.2199, 51.2360, 64.7729

Sweetspot

The Sweet Spot groups the original color and five complimentary colors.



52.0172, 51.2383, 53.6035



91.5491, 94.7723, 102.2637



53.9807, 51.9591, 66.8591



19.4000, 19.9937, 21.5180



0.0000, 0.0000, 0.0000



20.3446, 21.4041, 23.3091

Same Dimension

The Same Dimension uses a secret algorithm to generate beautiful new colors.



52.0172, 51.2383, 53.6035



79.8709, 77.3681, 80.0211



53.9574, 55.4559, 53.2103



11.8481, 11.8240, 12.4759



16.2917, 8.3895, 1.1762



0.9251, 0.4748, 0.1404

Inverse Universe

The Inverse Universe completely reimagines the original color for something new.



52.0172, 51.2383, 53.6035



79.8709, 77.3681, 80.0211



51.3483, 55.1344, 67.6107



11.8481, 11.8240, 12.4759



16.2917, 8.3895, 1.1762



0.9251, 0.4748, 0.1404

Previews

White Background



This preview shows how the XYZ color 52.0158, 51.2360, 53.6024 looks on a white background.

Color Contrast Check

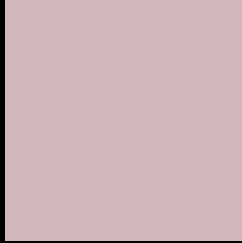
Large Text (above 18pt) WCAG AA × Fail

Any Text WCAG AA × Fail

Large Text (above 18pt) WCAG AAA × Fail

Any Text WCAG AAA × Fail

Black Background



This preview shows how the XYZ color 52.0158, 51.2360, 53.6024 looks on a black background.

Color Contrast Check

Large Text (above 18pt) WCAG AA ✓ Pass

Any Text WCAG AA ✓ Pass

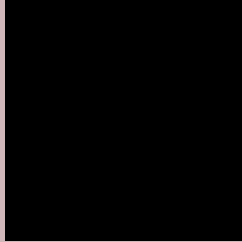
Large Text (above 18pt) WCAG AAA ✓ Pass

Any Text WCAG AAA ✓ Pass

If you want to check with other color combinations, try the [Color Contrast Checker](#).

XYZ 52.0158, 51.2360, 53.6024

Background



This preview shows how black text looks on a background with the XYZ color 52.0158, 51.2360, 53.6024.



This preview shows how white text looks on a background with the XYZ color 52.0158, 51.2360,

Color Blindness Simulation

Color vision deficiency is a very complex topic, and I could not describe the different causes any better than Wikipedia does, so if you want to learn more, you should check out their [article about color blindness](#).

Dichromacy



Original Color

52.0158, 51.2360, 53.6024

Protanopia

49.3752, 51.4068, 55.4643

Deuteranopia

52.2979, 51.3815, 53.6156



Tritanopia

53.1005, 51.0424, 59.8768

Trichromacy



Original Color

52.0158, 51.2360, 53.6024

Protanomaly

50.1361, 51.1773, 54.8127

Deuteranomaly

52.2979, 51.3815, 53.6156

Tritanomaly

52.8536, 51.2725, 57.5630

Monochromacy



Original Color

52.0158, 51.2360, 53.6024

Achromatopsia

49.5206, 52.0996, 56.7364

Achromatomaly

50.1945, 51.5109, 55.4412

CSS Examples

Text

The CSS property to change the color of the text to XYZ 52.0158, 51.2360, 53.6024 is called "color". The color property can be set on classes, ids or directly on the HTML element.

This example shows how text in the color `rgb(208, 184, 186)` looks like.

```
.text, #text, p{  
    color:rgb(208, 184, 186)  
}
```

If you want to add a text shadow in that color use the text-shadow property, you can generate a text shadow directly with our [CSS Text Shadow Generator](#).

Here you see how black text with a 4 pixel rgb(208, 184, 186) colored shadow looks like.

```
.shadow{ text-shadow: 4px 4px 2px rgb(208, 184, 186) }
```

Border

The CSS property to change the border of an element to XYZ 52.0158, 51.2360, 53.6024 is called "border". The border property can be set on classes, ids or directly on the HTML element.

This example shows the color as border, it can be applied via the CSS property "border" or "border-color".

```
.border, #border, table{ border:4px solid rgb(208, 184, 186) }
```


If only the border color should be changed use the property `border-color`.

```
.border{ border-color:rgb(208, 184, 186) }
```

If you want to add a box shadow in that color use:

Here you see how a box with a 4 pixel `rgb(208, 184, 186)` colored shadow looks like.

```
.boxshadow{ -moz-box-shadow:4px 4px 4px  
4px rgb(208, 184, 186); -webkit-box-  
shadow:4px 4px 4px 4px rgb(208, 184, 186);  
box-shadow:4px 4px 4px 4px rgb(208, 184,  
186) }
```

Background

The CSS property to change the background color of an element to XYZ 52.0158, 51.2360, 53.6024 is called "background". The background property can be set on classes, ids or directly on the HTML element.

```
.background, #background, body{  
background: rgb(208, 184, 186) }
```

If only the background color should be changed can be used:

```
.background{ background-color: rgb(208,  
184, 186) }
```

This example shows the color as background, it is applied via the CSS property "background".

To optimize and compress your CSS code, you can use our [online CSS compressor and optimizer](#) based on csstidy. If you want to create a linear or radial gradient as background or border, check our [CSS Gradient Generator](#).

Hey! You found this booklet interesting? Support Converting Colors with the new Membership Option!

The pro membership hides all ads, plus gives you double the colors in the color bucket, and more awesome pro features!

[Learn more, Memberships starting at \\$2.50/m!](#)

**Follow me
on Twitter!**

@ConvertingColor