

Converting Colors

XYZ(52.1043, 50.7764, 48.6496)

Have a look what the booklet for
XYZ(52.1043, 50.7764, 48.6496)
contains.

XYZ(52.1043, 50.7764, 48.6496)	3
<i>Conversions</i>	4
<i>Details</i>	6
<i>Harmonies</i>	12
<i>Previews</i>	24
<i>Color Blindness Simulation</i>	28
<i>CSS Examples</i>	31

Color

**XYZ(52.1043, 50.7764,
48.6496)**

Conversions

Conversions Part 1

Format	Color
Hex	D5B6B1
RGB	213, 182, 177
RGB Percent	84%, 71%, 69%
CMY	0.1647, 0.2863, 0.3059
CMYK	0.00, 0.15, 0.17, 0.16
HSL	8°, 30%, 76%
HSV	8°, 17%, 84%
XYZ	52.1043, 50.7764, 48.6496
YIQ	190.6990, 20.0810, 5.0170

Conversions

Conversions Part 2

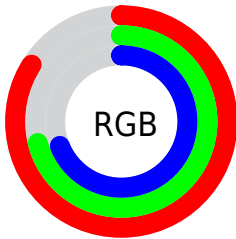
Format	Color
R _Y B	213, 183, 177
Decimal	14005937
CIE Lab	76.54, 10.32, 6.66
CIE LCh	77, 12.280, 32.837
Yxy	50.7764, 0.3439, 0.3351
Android (android.graphics.Color)	4292196017 (0xFFD5B6B1)
YUV	190.6990, -6.7536, 19.5580
Hunter-Lab	71.2576, 5.8204, 9.4013

Details

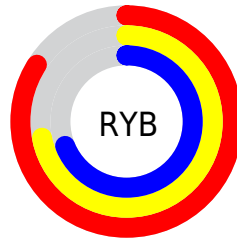
The XYZ color **52.1043, 50.7764, 48.6496** is a light color, and the websafe version is hex **CC9999**. A complement of this color would be **52.6970, 59.2614, 71.6122**, and the grayscale version is **49.3778, 51.9493, 56.5728**.

A 20% lighter version of the original color is **86.5225, 88.2923, 89.5727**, and **25.5889, 24.4249, 22.4346** is the 20% darker color. If you saturate the color by 10%, you get **46.6320, 42.9680, 37.1559**, and if you desaturate by 10%, it is **58.4027, 59.7057, 62.0547**.

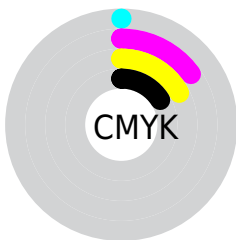
Distribution



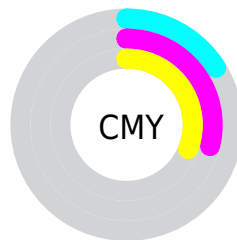
- Red (84%)
- Green (71%)
- Blue (69%)



- Red (84%)
- Yellow (72%)
- Blue (69%)



- Cyan (0%)
- Magenta (15%)
- Yellow (17%)
- Black (16%)



- Cyan (16%)
- Magenta (29%)
- Yellow (31%)

Brightness & Saturation Gradients

These gradients show how the XYZ color 52.1043, 50.7764, 48.6496 changes by changing the brightness by 10 percent. The first figure shows a shift by +10% for each color and the second figure -10%.

Similar to the brightness gradients but the following saturation gradients show a change of the XYZ color 52.1043, 50.7764, 48.6496 by changing the saturation by 10% instead.

■ 52.1043, 50.7764,
48.6496

■ 52.1043, 50.7764,
48.6496

385.1565,
389.6944, 397.9440

■ 37.3128, 36.0307,
33.9780

■ 92.4584, 91.3242,
89.5464

■ 25.6246, 24.4579,
22.5994

118.7516,
117.8950, 116.6086

■ 16.6742, 15.6736,
14.0955

149.6096,
149.1764, 148.6382

■ 10.0963, 9.2935,
8.0476

185.3975,
185.5526, 186.0535

■ 5.5256, 4.9331,
4.0372

226.4808,
227.4081, 229.2732

■ 2.5967, 2.2081,
1.6458

273.2249,

■ 0.9443, 0.7244,

275.1274, 278.7159

0.3232

325.9950,
329.0947, 334.7999

0.0000, 0.0000,
0.0000

52.1043, 50.7764,
48.6496

52.1043, 50.7764,
48.6496

46.6320, 42.9680,
37.1559

58.4027, 59.7057,
62.0547

41.9473, 36.2295,
27.4834

65.5553, 69.7906,
77.4495

38.0148, 30.5163,
19.5393

73.5940, 81.0729,
94.9117

34.7950, 25.7779,
13.2214

81.2507, 92.8862,
108.2542

32.2444, 21.9594,
8.4168

■ 30.3148, 19.0005,
4.9977

■ 28.9512, 16.8337,
2.8157

■ 28.0865, 15.3800,
1.6779

■ 27.8951, 15.0550,
1.4357

Harmonies

Analogous

The Analogous color harmony consists of three colors that are next to each other on the color wheel.



52.8516, 50.7764, 54.6574



52.1043, 50.7764, 48.6496



50.3251, 50.7764, 44.6892

Triad

The Triadic color harmony groups three colors that are evenly spaced from another and form a triangle on the color wheel.



52.1043, 50.7764, 48.6496



44.4033, 50.7764, 49.6615



48.4824, 50.7764, 69.0420

Complementary

The Complementary color scheme is a pair of colors which are on the opposite of each other on the color wheel.



52.1043, 50.7764, 48.6496



52.6970, 59.2614, 71.6122

Split Complementary

Split-complementary colors differ from the complementary color scheme. The scheme consists of three colors, the original color and two neighbors of the complement color.



46.2550, 50.7764, 67.4400



52.1043, 50.7764, 48.6496



43.9450, 50.7764, 55.9211

Square

The Square scheme is like the rectangle color scheme, but the four colors are evenly spaced on the color wheel.



52.1043, 50.7764, 48.6496



45.8846, 50.7764, 45.2397



44.6123, 50.7764, 62.5019



50.7190, 50.7764, 66.7212

Rectangle

The Rectangle color scheme consists of four colors that form a rectangle on the color wheel.



52.1043, 50.7764, 48.6496



48.8194, 50.7764, 43.5636



44.6123, 50.7764, 62.5019



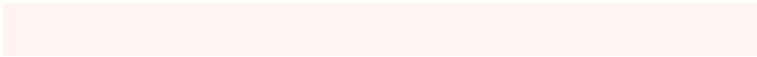
47.7078, 50.7764, 68.9446

Sweetspot

The Sweet Spot groups the original color and five complimentary colors.



52.1057, 50.7787, 48.6507



89.6620, 92.4006, 97.3108



54.5730, 50.1549, 66.6085



19.0350, 19.5566, 20.4932



0.0000, 0.0000, 0.0000



20.3446, 21.4041, 23.3091

Same Dimension

The Same Dimension uses a secret algorithm to generate beautiful new colors.



52.1057, 50.7787, 48.6507



75.4555, 72.2525, 67.0959



55.9848, 58.5369, 49.9437



12.5611, 12.6964, 12.9493



17.0834, 9.2841, 0.8916



1.0764, 0.6520, 0.0691

Inverse Universe

The Inverse Universe completely reimagines the original color for something new.



52.6970, 59.2614, 71.6122



76.4918, 87.1373, 107.3954



48.5991, 51.0654, 70.2462



12.6382, 13.7998, 15.9350



17.7858, 23.8334, 42.1160



1.1142, 1.5204, 2.5541

Previews

White Background



This preview shows how the XYZ color 52.1043, 50.7764, 48.6496 looks on a white background.

Color Contrast Check

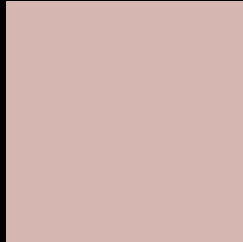
Large Text (above 18pt) WCAG AA × Fail

Any Text WCAG AA × Fail

Large Text (above 18pt) WCAG AAA × Fail

Any Text WCAG AAA × Fail

Black Background



This preview shows how the XYZ color 52.1043, 50.7764, 48.6496 looks on a black background.

Color Contrast Check

Large Text (above 18pt) WCAG AA ✓ Pass

Any Text WCAG AA ✓ Pass

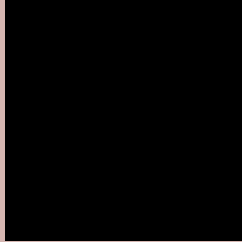
Large Text (above 18pt) WCAG AAA ✓ Pass

Any Text WCAG AAA ✓ Pass

If you want to check with other color combinations, try the [Color Contrast Checker](#).

XYZ 52.1043, 50.7764, 48.6496

Background



This preview shows how black text looks on a background with the XYZ color 52.1043, 50.7764, 48.6496.



This preview shows how white text looks on a background with the XYZ color 52.1043, 50.7764,

48.6496.

Color Blindness Simulation

Color vision deficiency is a very complex topic, and I could not describe the different causes any better than Wikipedia does, so if you want to learn more, you should check out their [article about color blindness](#).

Dichromacy



Original Color

52.1043, 50.7764, 48.6496

Protanopia

48.4696, 50.7311, 50.4175

Deuteranopia

51.8151, 50.6273, 48.6361



Tritanopia

53.7701, 50.5375, 57.3728

Trichromacy



Original Color

52.1043, 50.7764, 48.6496

Protanomaly

49.7830, 50.7900, 49.8274

Deuteranomaly

51.8151, 50.6273, 48.6361

Tritanomaly

53.0225, 50.5265, 53.9717

Monochromacy



Original Color

52.1043, 50.7764, 48.6496

Achromatopsia

49.5206, 52.0996, 56.7364

Achromatomaly

50.3993, 51.6537, 53.7682

CSS Examples

Text

The CSS property to change the color of the text to XYZ 52.1043, 50.7764, 48.6496 is called "color". The color property can be set on classes, ids or directly on the HTML element.

This example shows how text in the color `rgb(213, 182, 177)` looks like.

```
.text, #text, p{  
    color:rgb(213, 182, 177)  
}
```

If you want to add a text shadow in that color use the text-shadow property, you can generate a text shadow directly with our [CSS Text Shadow Generator](#).

Here you see how black text with a 4 pixel rgb(213, 182, 177) colored shadow looks like.

```
.shadow{ text-shadow: 4px 4px 2px rgb(213, 182, 177) }
```

Border

The CSS property to change the border of an element to XYZ 52.1043, 50.7764, 48.6496 is called "border". The border property can be set on classes, ids or directly on the HTML element.

This example shows the color as border, it can be applied via the CSS property "border" or "border-color".

```
.border, #border, table{ border:4px solid rgb(213, 182, 177) }
```


If only the border color should be changed use the property `border-color`.

```
.border{ border-color:rgb(213, 182, 177) }
```

If you want to add a box shadow in that color use:

Here you see how a box with a 4 pixel `rgb(213, 182, 177)` colored shadow looks like.

```
.boxshadow{ -moz-box-shadow:4px 4px 4px  
4px rgb(213, 182, 177); -webkit-box-  
shadow:4px 4px 4px 4px rgb(213, 182, 177);  
box-shadow:4px 4px 4px 4px rgb(213, 182,  
177) }
```

Background

The CSS property to change the background color of an element to XYZ 52.1043, 50.7764, 48.6496 is called "background". The background property can be set on classes, ids or directly on the HTML element.

```
.background, #background, body{  
background: rgb(213, 182, 177) }
```

If only the background color should be changed can be used:

```
.background{ background-color: rgb(213,  
182, 177) }
```

This example shows the color as background, it is applied via the CSS property "background".

To optimize and compress your CSS code, you can use our [online CSS compressor and optimizer](#) based on csstidy. If you want to create a linear or radial gradient as background or border, check our [CSS Gradient Generator](#).

Hey! You found this booklet interesting? Support Converting Colors with the new Membership Option!

The pro membership hides all ads, plus gives you double the colors in the color bucket, and more awesome pro features!

[Learn more, Memberships starting at \\$2.50/m!](#)

**Follow me
on Twitter!**

@ConvertingColor