

# Converting Colors

XYZ(52.1816, 49.4758, 49.9889)

Have a look what the booklet for  
XYZ(52.1816, 49.4758, 49.9889)  
contains.

<b>XYZ(52.1829, 49.5831, 50.0002)</b> .....	3
<b><i>Conversions</i></b> .....	4
<b><i>Details</i></b> .....	6
<b><i>Harmonies</i></b> .....	12
<b><i>Previews</i></b> .....	24
<b><i>Color Blindness Simulation</i></b> .....	28
<b><i>CSS Examples</i></b> .....	31

# Color

**XYZ(52.1829, 49.5831,  
50.0002)**

# Conversions

## Conversions Part 1

Format	Color
Hex	D7B2B4
RGB	215, 178, 180
RGB Percent	84%, 70%, 71%
CMY	0.1569, 0.3019, 0.2941
CMYK	0.00, 0.17, 0.16, 0.16
HSL	357°, 32%, 77%
HSV	357°, 17%, 84%
XYZ	52.1829, 49.5831, 50.0002
YIQ	189.2910, 21.4100, 8.4660

# Conversions

## Conversions Part 2

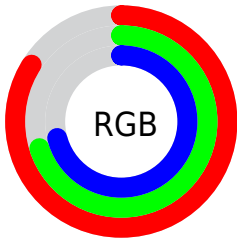
Format	Color
R <sub>Y</sub> B	215, 178, 180
Decimal	14135988
CIE Lab	75.81, 13.67, 4.00
CIE LCh	76, 14.246, 16.295
Yxy	49.5831, 0.3438, 0.3267
Android (android.graphics.Color)	4292326068 (0xFFD7B2B4)
YUV	189.2910, -4.5805, 22.5468
Hunter-Lab	70.4153, 9.0549, 7.1903

# Details

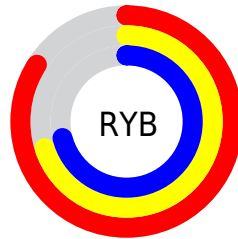
The XYZ color **52.1829, 49.5831, 50.0002** is a light color, and the websafe version is hex **CC9999**. A complement of this color would be **54.6727, 62.8711, 72.2075**, and the grayscale version is **48.5543, 51.0829, 55.6292**.

A 20% lighter version of the original color is **85.8031, 86.1618, 91.4655**, and **25.6616, 23.6731, 23.2955** is the 20% darker color. If you saturate the color by 10%, you get **46.3135, 40.9202, 38.5600**, and if you desaturate by 10%, it is **59.0296, 59.7130, 63.2675**.

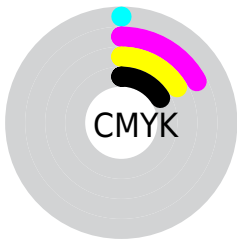
# Distribution



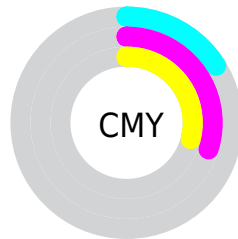
- Red (84%)
- Green (70%)
- Blue (71%)



- Red (84%)
- Yellow (70%)
- Blue (71%)



- Cyan (0%)
- Magenta (17%)
- Yellow (16%)
- Black (16%)




- Cyan (16%)
- Magenta (30%)
- Yellow (29%)


# Brightness & Saturation Gradients

These gradients show how the XYZ color 52.1829, 49.5831, 50.0002 changes by changing the brightness by 10 percent. The first figure shows a shift by +10% for each color and the second figure -10%.


Similar to the brightness gradients but the following saturation gradients show a change of the XYZ color 52.1829, 49.5831, 50.0002 by changing the saturation by 10% instead.





 52.1829, 49.5831,  
50.0002

 52.1829, 49.5831,  
50.0002


385.4547,  
385.0334, 403.4018

 37.3757, 35.0823,  
35.0424

 92.5736, 89.5569,  
91.5715

 25.6736, 23.7262,  
23.4117


118.8878,  
115.7986, 119.0220

 16.7110, 15.1307,  
14.6896

149.7684,  
146.7227, 151.4739

 10.1227, 8.9111,  
8.4577

185.5807,  
182.7137, 189.3456

 5.5433, 4.6833,  
4.2972

226.6901,  
224.1558, 233.0557

 2.6074, 2.0627,  
1.7898

273.4621,

 0.9497, 0.6435,

271.4335, 283.0227

0.4212

326.2618,  
324.9313, 339.6653

■ 0.0000, 0.0000,  
0.0000

■ 52.1829, 49.5831,  
50.0002

■ 52.1829, 49.5831,  
50.0002

■ 46.3135, 40.9202,  
38.5600

■ 59.0296, 59.7130,  
63.2675

■ 41.3729, 33.6500,  
28.8639

■ 66.8910, 71.3663,  
78.4337

■ 37.3148, 27.7019,  
20.8272

■ 75.8076, 84.6048,  
95.5706

■ 34.0871, 22.9963,  
14.3569

■ 81.8345, 93.1872,  
108.2815

■ 31.6324, 19.4453,  
9.3506

■ 29.8858, 16.9493,  
5.6942

■ 28.7719, 15.3919,  
3.2564

■ 28.1931, 14.6189,  
1.8777

■ 28.0884, 14.4727,  
1.6483

# Harmonies

## Analogous

The Analogous color harmony consists of three colors that are next to each other on the color wheel.



52.2467, 49.5831, 57.5149



52.1829, 49.5831, 50.0002



50.7319, 49.5831, 44.1213

# Triad

The Triadic color harmony groups three colors that are evenly spaced from another and form a triangle on the color wheel.



52.1829, 49.5831, 50.0002



43.5430, 49.5831, 44.5299



45.9317, 49.5831, 69.4224

# Complementary

The Complementary color scheme is a pair of colors which are on the opposite of each other on the color wheel.



52.1829, 49.5831, 50.0002



54.6727, 62.8711, 72.2075

# Split Complementary

Split-complementary colors differ from the complementary color scheme. The scheme consists of three colors, the original color and two neighbors of the complement color.



43.6975, 49.5831, 65.2248



52.1829, 49.5831, 50.0002



42.3537, 49.5831, 50.6075

# Square

The Square scheme is like the rectangle color scheme, but the four colors are evenly spaced on the color wheel.



52.1829, 49.5831, 50.0002



45.7136, 49.5831, 41.1711



42.4092, 49.5831, 58.1815



48.5698, 49.5831, 69.2209



# Rectangle

The Rectangle color scheme consists of four colors that form a rectangle on the color wheel.



52.1829, 49.5831, 50.0002



49.2030, 49.5831, 41.7112



42.4092, 49.5831, 58.1815



45.1107, 49.5831, 68.4633

# Sweetspot

The Sweet Spot groups the original color and five complimentary colors.



52.1843, 49.5853, 50.0012



89.2349, 91.3805, 97.6799



55.4929, 50.8257, 71.1759



18.9316, 19.3099, 20.5824



0.0000, 0.0000, 0.0000



20.3446, 21.4041, 23.3091



# Same Dimension

The Same Dimension uses a secret algorithm to generate beautiful new colors.



52.1843, 49.5853, 50.0012



73.1716, 67.6193, 66.5357



55.3608, 56.2615, 50.0639



12.4502, 12.4316, 13.0447



16.8124, 8.6613, 1.0504



1.0238, 0.5263, 0.1148



# Inverse Universe

The Inverse Universe completely reimagines the original color for something new.



52.1843, 49.5853, 50.0012



73.1716, 67.6193, 66.5357



51.0434, 55.2046, 72.2556



12.4502, 12.4316, 13.0447



16.8124, 8.6613, 1.0504



1.0238, 0.5263, 0.1148



# Previews

## White Background



This preview shows how the XYZ color 52.1829, 49.5831, 50.0002 looks on a white background.

## Color Contrast Check

Large Text (above 18pt) WCAG AA × Fail

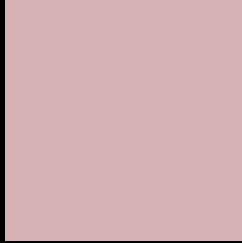
Any Text WCAG AA × Fail

Large Text (above 18pt) WCAG AAA × Fail

Any Text WCAG AAA × Fail



# Black Background



This preview shows how the XYZ color 52.1829, 49.5831, 50.0002 looks on a black background.

## Color Contrast Check

Large Text (above 18pt) WCAG AA ✓ Pass

Any Text WCAG AA ✓ Pass

Large Text (above 18pt) WCAG AAA ✓ Pass

Any Text WCAG AAA ✓ Pass

If you want to check with other color combinations, try the [Color Contrast Checker](#).

**XYZ 52.1829, 49.5831, 50.0002**

## **Background**



This preview shows how black text looks on a background with the XYZ color 52.1829, 49.5831, 50.0002.



This preview shows how white text looks on a background with the XYZ color 52.1829, 49.5831,

50.0002.

# Color Blindness Simulation

Color vision deficiency is a very complex topic, and I could not describe the different causes any better than Wikipedia does, so if you want to learn more, you should check out their [article about color blindness](#).

## Dichromacy



### Original Color

52.1829, 49.5831, 50.0002

### Protanopia

47.8017, 49.6970, 52.9720

### Deuteranopia

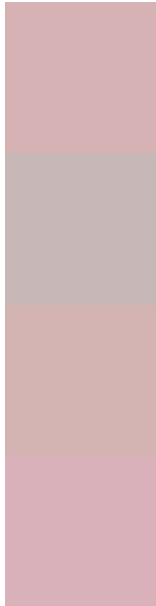
50.6730, 49.7123, 49.5725



## Tritanopia

53.1385, 49.3673, 55.4433

# Trichromacy



## Original Color

52.1829, 49.5831, 50.0002

## Protanomaly

49.3001, 49.5652, 51.7684

## Deuteranomaly

51.3219, 49.7461, 49.5448

## Tritanomaly

52.9040, 49.5884, 53.2375

# Monochromacy



## Original Color

52.1829, 49.5831, 50.0002

## Achromatopsia

48.3692, 50.8881, 55.4172

## Achromatomaly

49.5006, 50.2489, 53.5444

# CSS Examples

## Text

The CSS property to change the color of the text to XYZ 52.1829, 49.5831, 50.0002 is called "color". The color property can be set on classes, ids or directly on the HTML element.

This example shows how text in the color `rgb(215, 178, 180)` looks like.

```
.text, #text, p{  
    color:rgb(215, 178, 180)  
}
```

If you want to add a text shadow in that color use the text-shadow property, you can generate a text shadow directly with our [CSS Text Shadow Generator](#).

Here you see how black text with a 4 pixel rgb(215, 178, 180) colored shadow looks like.

```
.shadow{ text-shadow: 4px 4px 2px rgb(215, 178, 180) }
```

## Border

The CSS property to change the border of an element to XYZ 52.1829, 49.5831, 50.0002 is called "border". The border property can be set on classes, ids or directly on the HTML element.

This example shows the color as border, it can be applied via the CSS property "border" or "border-color".

```
.border, #border, table{ border:4px solid rgb(215, 178, 180) }
```



If only the border color should be changed use the property `border-color`.

```
.border{ border-color:rgb(215, 178, 180) }
```

If you want to add a box shadow in that color use:

Here you see how a box with a 4 pixel `rgb(215, 178, 180)` colored shadow looks like.

```
.boxshadow{ -moz-box-shadow:4px 4px 4px  
4px rgb(215, 178, 180); -webkit-box-  
shadow:4px 4px 4px 4px rgb(215, 178, 180);  
box-shadow:4px 4px 4px 4px rgb(215, 178,  
180) }
```

# Background

The CSS property to change the background color of an element to XYZ 52.1829, 49.5831, 50.0002 is called "background". The background property can be set on classes, ids or directly on the HTML element.

```
.background, #background, body{  
background: rgb(215, 178, 180) }
```

If only the background color should be changed can be used:

```
.background{ background-color: rgb(215,  
178, 180) }
```

This example shows the color as background, it is applied via the CSS property "background".

To optimize and compress your CSS code, you can use our [online CSS compressor and optimizer](#) based on csstidy. If you want to create a linear or radial gradient as background or border, check our [CSS Gradient Generator](#).

Hey! You found this booklet interesting? Support Converting Colors with the new Membership Option!

The pro membership hides all ads, plus gives you double the colors in the color bucket, and more awesome pro features!

**[Learn more, Memberships starting at \\$2.50/m!](#)**

**Follow me  
on Twitter!**

@ConvertingColor