

Converting Colors

XYZ(52.2263, 51.2557, 46.0266)

Have a look what the booklet for
XYZ(52.2263, 51.2557, 46.0266)
contains.

XYZ(52.1114, 51.1417, 46.1545)	3
<i>Conversions</i>	4
<i>Details</i>	6
<i>Harmonies</i>	12
<i>Previews</i>	24
<i>Color Blindness Simulation</i>	28
<i>CSS Examples</i>	31

Color

**XYZ(52.1114, 51.1417,
46.1545)**

Conversions

Conversions Part 1

Format	Color
Hex	D6B7AC
RGB	214, 183, 172
RGB Percent	84%, 72%, 67%
CMY	0.1608, 0.2823, 0.3255
CMYK	0.00, 0.14, 0.20, 0.16
HSL	16°, 34%, 76%
HSV	16°, 20%, 84%
XYZ	52.1114, 51.1417, 46.1545
YIQ	191.0150, 22.0070, 3.1510

Conversions

Conversions Part 2

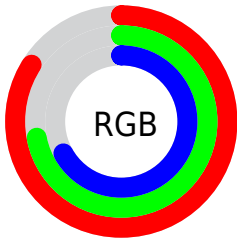
Format	Color
RYB	214, 187, 172
Decimal	14071724
CIELab	76.76, 9.38, 9.70
CIELCh	77, 13.496, 45.955
Yxy	51.1417, 0.3488, 0.3423
Android (android.graphics.Color)	4292261804 (0xFFD6B7AC)
YUV	191.0150, -9.3744, 20.1578
Hunter-Lab	71.5134, 4.9234, 11.7939

Details

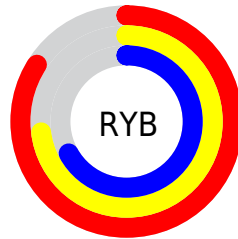
The XYZ color **52.1114, 51.1417, 46.1545** is a light color, and the websafe version is hex **FFCCCC**. A complement of this color would be **50.5063, 56.3360, 71.8305**, and the grayscale version is **49.5748, 52.1566, 56.7985**.

A 20% lighter version of the original color is **85.9716, 88.5391, 85.2316**, and **25.6709, 24.6923, 21.1824** is the 20% darker color. If you saturate the color by 10%, you get **47.1429, 44.2329, 35.1618**, and if you desaturate by 10%, it is **57.7792, 58.9186, 59.0143**.

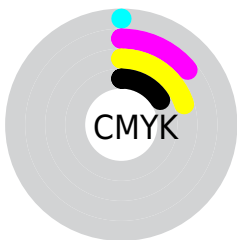
Distribution



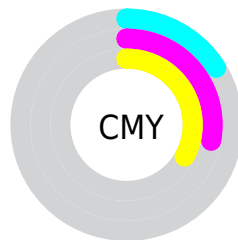
- Red (84%)
- Green (72%)
- Blue (67%)



- Red (84%)
- Yellow (73%)
- Blue (67%)



- Cyan (0%)
- Magenta (14%)
- Yellow (20%)
- Black (16%)





- Cyan (16%)
- Magenta (28%)
- Yellow (33%)

Brightness & Saturation Gradients


These gradients show how the XYZ color 52.1114, 51.1417, 46.1545 changes by changing the brightness by 10 percent. The first figure shows a shift by +10% for each color and the second figure -10%.


Similar to the brightness gradients but the following saturation gradients show a change of the XYZ color 52.1114, 51.1417, 46.1545 by changing the saturation by 10% instead.


 52.1114, 51.1417,
46.1545

 52.1114, 51.1417,
46.1545

385.1834,
391.1141, 387.7251

 37.3185, 36.3214,
32.0182

 92.4688, 91.8642,
85.7869

 25.6290, 24.6825,
21.1105

118.7639,
118.5352, 112.1201

 16.6775, 15.8407,
13.0128

149.6239,
149.9252, 143.3560

 10.0987, 9.4115,
7.3065

185.4141,
186.4185, 179.9131

 5.5272, 5.0105,
3.5732

226.4998,
228.3997, 222.2101

 2.5977, 2.2534,
1.3942

273.2463,

 0.9448, 0.7489,

276.2531, 270.6653

0.1372

326.0191,
330.3631, 325.6975

■ 0.0000, 0.0000,
0.0000

■ 52.1114, 51.1417,
46.1545

■ 52.1114, 51.1417,
46.1545

■ 47.1429, 44.2329,
35.1618

■ 57.7792, 58.9186,
59.0143

■ 42.8417, 38.1550,
25.9458

■ 64.1684, 67.5854,
73.8196

■ 39.1795, 32.8779,
18.4131

■ 71.3052, 77.1720,
90.6480

■ 36.1240, 28.3674,
12.4606

■ 78.7915, 87.5359,
107.3511

■ 33.6402, 24.5866,
7.9739

■ 81.5417, 93.0362,
108.2678

■ 31.6888, 21.4951,
4.8225

■ 30.2252, 19.0485,
2.8530

■ 29.1825, 17.1908,
1.8031

■ 29.1492, 17.1313,
1.7703

Harmonies

Analogous

The Analogous color harmony consists of three colors that are next to each other on the color wheel.



53.4962, 51.1417, 51.8990



52.1114, 51.1417, 46.1545



49.8129, 51.1417, 43.0988

Triad

The Triadic color harmony groups three colors that are evenly spaced from another and form a triangle on the color wheel.



52.1114, 51.1417, 46.1545



43.9885, 51.1417, 52.3334



49.9742, 51.1417, 70.3670

Complementary

The Complementary color scheme is a pair of colors which are on the opposite of each other on the color wheel.



52.1114, 51.1417, 46.1545



50.5063, 56.3360, 71.8305

Split Complementary

Split-complementary colors differ from the complementary color scheme. The scheme consists of three colors, the original color and two neighbors of the complement color.



47.4240, 51.1417, 70.5092



52.1114, 51.1417, 46.1545



44.0282, 51.1417, 59.6500

Square

The Square scheme is like the rectangle color scheme, but the four colors are evenly spaced on the color wheel.



52.1114, 51.1417, 46.1545



45.1559, 51.1417, 46.4484



45.2665, 51.1417, 66.4438



52.2331, 51.1417, 66.0706

Rectangle

The Rectangle color scheme consists of four colors that form a rectangle on the color wheel.



52.1114, 51.1417, 46.1545



48.0998, 51.1417, 42.8083



45.2665, 51.1417, 66.4438



49.1211, 51.1417, 70.9142

Sweetspot

The Sweet Spot groups the original color and five complimentary colors.



52.1128, 51.1440, 46.1556



89.1867, 92.0597, 95.2733



53.3237, 48.1375, 63.2942



18.9582, 19.5259, 20.0889



0.0000, 0.0000, 0.0000



20.3446, 21.4041, 23.3091

Same Dimension

The Same Dimension uses a secret algorithm to generate beautiful new colors.



52.1128, 51.1440, 46.1556



73.9610, 71.1577, 60.7579



56.6525, 60.2235, 47.6688



12.6852, 12.9446, 12.9907



17.6913, 10.4999, 1.0942



1.1348, 0.7688, 0.0886

Inverse Universe

The Inverse Universe completely reimagines the original color for something new.



50.5063, 56.3360, 71.8305



71.1031, 80.3755, 106.3742



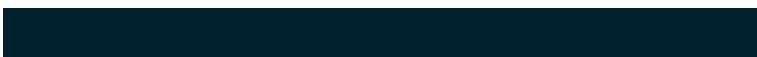
45.9820, 47.2874, 70.3224



12.5041, 13.5316, 15.8903



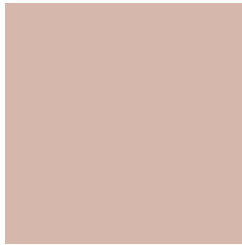
14.8083, 17.8783, 41.1235



0.9588, 1.2096, 2.5023

Previews

White Background



This preview shows how the XYZ color 52.1114, 51.1417, 46.1545 looks on a white background.

Color Contrast Check

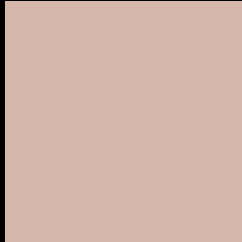
Large Text (above 18pt) WCAG AA × Fail

Any Text WCAG AA × Fail

Large Text (above 18pt) WCAG AAA × Fail

Any Text WCAG AAA × Fail

Black Background



This preview shows how the XYZ color 52.1114, 51.1417, 46.1545 looks on a black background.

Color Contrast Check

Large Text (above 18pt) WCAG AA ✓ Pass

Any Text WCAG AA ✓ Pass

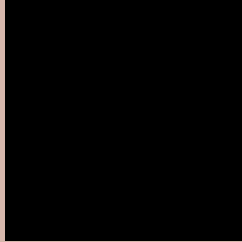
Large Text (above 18pt) WCAG AAA ✓ Pass

Any Text WCAG AAA ✓ Pass

If you want to check with other color combinations, try the [Color Contrast Checker](#).

XYZ 52.1114, 51.1417, 46.1545

Background



This preview shows how black text looks on a background with the XYZ color 52.1114, 51.1417, 46.1545.



This preview shows how white text looks on a background with the XYZ color 52.1114, 51.1417,

Color Blindness Simulation

Color vision deficiency is a very complex topic, and I could not describe the different causes any better than Wikipedia does, so if you want to learn more, you should check out their [article about color blindness](#).

Dichromacy



Original Color

52.1114, 51.1417, 46.1545

Protanopia

48.7004, 51.2261, 47.8783

Deuteranopia

52.1114, 51.1417, 46.1545



Tritanopia

54.6741, 51.2893, 58.0571

Trichromacy



Original Color

52.1114, 51.1417, 46.1545

Protanomaly

50.0389, 51.2932, 47.3076

Deuteranomaly

52.1114, 51.1417, 46.1545

Tritanomaly

53.7057, 51.1918, 53.5048

Monochromacy



Original Color

52.1114, 51.1417, 46.1545

Achromatopsia

49.5206, 52.0996, 56.7364

Achromatomaly

50.1881, 51.5692, 52.6561

CSS Examples

Text

The CSS property to change the color of the text to XYZ 52.1114, 51.1417, 46.1545 is called "color". The color property can be set on classes, ids or directly on the HTML element.

This example shows how text in the color rgb(214, 183, 172) looks like.

```
.text, #text, p{  
    color:rgb(214, 183, 172)  
}
```

If you want to add a text shadow in that color use the text-shadow property, you can generate a text shadow directly with our [CSS Text Shadow Generator](#).

Here you see how black text with a 4 pixel rgb(214, 183, 172) colored shadow looks like.

```
.shadow{ text-shadow: 4px 4px 2px rgb(214, 183, 172) }
```

Border

The CSS property to change the border of an element to XYZ 52.1114, 51.1417, 46.1545 is called "border". The border property can be set on classes, ids or directly on the HTML element.

This example shows the color as border, it can be applied via the CSS property "border" or "border-color".

```
.border, #border, table{ border:4px solid rgb(214, 183, 172) }
```


If only the border color should be changed use the property `border-color`.

```
.border{ border-color:rgb(214, 183, 172) }
```

If you want to add a box shadow in that color use:

Here you see how a box with a 4 pixel `rgb(214, 183, 172)` colored shadow looks like.

```
.boxshadow{ -moz-box-shadow:4px 4px 4px  
4px rgb(214, 183, 172); -webkit-box-  
shadow:4px 4px 4px 4px rgb(214, 183, 172);  
box-shadow:4px 4px 4px 4px rgb(214, 183,  
172) }
```

Background

The CSS property to change the background color of an element to XYZ 52.1114, 51.1417, 46.1545 is called "background". The background property can be set on classes, ids or directly on the HTML element.

```
.background, #background, body{  
background: rgb(214, 183, 172) }
```

If only the background color should be changed can be used:

```
.background{ background-color: rgb(214,  
183, 172) }
```

This example shows the color as background, it is applied via the CSS property "background".

To optimize and compress your CSS code, you can use our [online CSS compressor and optimizer](#) based on csstidy. If you want to create a linear or radial gradient as background or border, check our [CSS Gradient Generator](#).

Hey! You found this booklet interesting? Support Converting Colors with the new Membership Option!

The pro membership hides all ads, plus gives you double the colors in the color bucket, and more awesome pro features!

[Learn more, Memberships starting at \\$2.50/m!](#)

**Follow me
on Twitter!**

@ConvertingColor