

Converting Colors

XYZ(52.2864, 50.4193, 49.6559)

Have a look what the booklet for
XYZ(52.2864, 50.4193, 49.6559)
contains.

XYZ(52.3921, 50.5986, 49.6530)	3
<i>Conversions</i>	4
<i>Details</i>	6
<i>Harmonies</i>	12
<i>Previews</i>	24
<i>Color Blindness Simulation</i>	28
<i>CSS Examples</i>	31

Color

**XYZ(52.3921, 50.5986,
49.6530)**

Conversions

Conversions Part 1

Format	Color
Hex	D6B5B3
RGB	214, 181, 179
RGB Percent	84%, 71%, 70%
CMY	0.1608, 0.2902, 0.2980
CMYK	0.00, 0.15, 0.16, 0.16
HSL	3°, 30%, 77%
HSV	3°, 16%, 84%
XYZ	52.3921, 50.5986, 49.6530
YIQ	190.6390, 20.3100, 6.3740

Conversions

Conversions Part 2

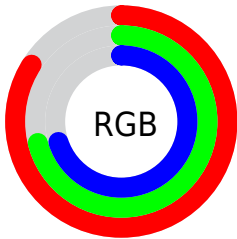
Format	Color
RYB	214, 181, 179
Decimal	14071219
CIELab	76.44, 11.54, 5.43
CIELCh	76, 12.750, 25.200
Yxy	50.5986, 0.3432, 0.3315
Android (android.graphics.Color)	4292261299 (0xFFD6B5B3)
YUV	190.6390, -5.7380, 20.4876
Hunter-Lab	71.1327, 6.9902, 8.4065

Details

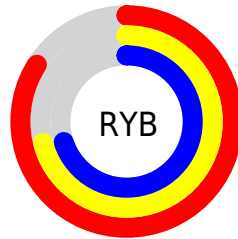
The XYZ color **52.3921, 50.5986, 49.6530** is a light color, and the websafe version is hex **CC9999**. A complement of this color would be **54.2710, 61.5242, 72.6336**, and the grayscale version is **49.3373, 51.9067, 56.5264**.

A 20% lighter version of the original color is **86.5196, 87.8265, 90.9894**, and **25.7831, 24.3156, 23.0731** is the 20% darker color. If you saturate the color by 10%, you get **46.5843, 42.1817, 37.8547**, and if you desaturate by 10%, it is **59.1327, 60.3424, 63.4205**.

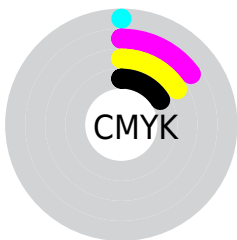
Distribution



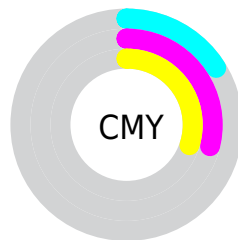
- Red (84%)
- Green (71%)
- Blue (70%)



- Red (84%)
- Yellow (71%)
- Blue (70%)



- Cyan (0%)
- Magenta (15%)
- Yellow (16%)
- Black (16%)





- Cyan (16%)
- Magenta (29%)
- Yellow (30%)

Brightness & Saturation Gradients


These gradients show how the XYZ color 52.3921, 50.5986, 49.6530 changes by changing the brightness by 10 percent. The first figure shows a shift by +10% for each color and the second figure -10%.


Similar to the brightness gradients but the following saturation gradients show a change of the XYZ color 52.3921, 50.5986, 49.6530 by changing the saturation by 10% instead.


 52.3921, 50.5986,
49.6530

 52.3921, 50.5986,
49.6530


386.2476,
389.0022, 402.0035

 37.5432, 35.8893,
34.7685

 92.8801, 91.0612,
91.0515

 25.8040, 24.3487,
23.2025


119.2499,
117.5832, 118.4027

 16.8090, 15.5925,
14.5364


150.1907,
148.8115, 150.7464

 10.1928, 9.2362,
8.3517

186.0679,
185.1306, 188.5013

 5.5902, 4.8956,
4.2298

227.2468,
226.9248, 232.0860

 2.6358, 2.1861,
1.7522

274.0929,

 0.9643, 0.7124,

274.5786, 281.9189

0.3962

326.9713,
328.4763, 338.4185

■ 0.0000, 0.0000,
0.0000

■ 52.3921, 50.5986,
49.6530

■ 52.3921, 50.5986,
49.6530

■ 46.5843, 42.1817,
37.8547

■ 59.1327, 60.3424,
63.4205

■ 41.6642, 35.0280,
27.9327

■ 66.8402, 71.4600,
79.2381

■ 37.5893, 29.0784,
19.7913

■ 75.5521, 84.0040,
97.1860

■ 34.3119, 24.2669,
13.3249

■ 81.5417, 93.0362,
108.2678

■ 31.7798, 20.5207,
8.4170

■ 29.9341, 17.7589,
4.9362

■ 28.7074, 15.8889,
2.7293

■ 28.0177, 14.7999,
1.6040

■ 27.8663, 14.5653,
1.3427

Harmonies

Analogous

The Analogous color harmony consists of three colors that are next to each other on the color wheel.



52.8415, 50.5986, 56.2071



52.3921, 50.5986, 49.6530



50.7758, 50.5986, 44.9333

Triad

The Triadic color harmony groups three colors that are evenly spaced from another and form a triangle on the color wheel.



52.3921, 50.5986, 49.6530



44.4000, 50.5986, 47.8863



47.7071, 50.5986, 69.3477

Complementary

The Complementary color scheme is a pair of colors which are on the opposite of each other on the color wheel.



52.3921, 50.5986, 49.6530



54.2710, 61.5242, 72.6336

Split Complementary

Split-complementary colors differ from the complementary color scheme. The scheme consists of three colors, the original color and two neighbors of the complement color.



45.5053, 50.5986, 66.6798



52.3921, 50.5986, 49.6530



43.6369, 50.5986, 53.9942

Square

The Square scheme is like the rectangle color scheme, but the four colors are evenly spaced on the color wheel.



52.3921, 50.5986, 49.6530



46.1533, 50.5986, 43.9743



44.0347, 50.5986, 60.9171



50.0851, 50.5986, 67.9443

Rectangle

The Rectangle color scheme consists of four colors that form a rectangle on the color wheel.



52.3921, 50.5986, 49.6530



49.2815, 50.5986, 43.2727



44.0347, 50.5986, 60.9171



46.9227, 50.5986, 68.8914

Sweetspot

The Sweet Spot groups the original color and five complimentary colors.



52.3935, 50.6009, 49.6541



89.3492, 91.7751, 97.2066



55.7674, 51.3031, 69.4164



18.9593, 19.4053, 20.4679



0.0000, 0.0000, 0.0000



20.3446, 21.4041, 23.3091

Same Dimension

The Same Dimension uses a secret algorithm to generate beautiful new colors.



52.3935, 50.6009, 49.6541



74.4326, 70.2066, 66.7550



56.1200, 58.0539, 50.8962



12.4798, 12.5337, 12.9222



16.8681, 8.8535, 0.8198



1.0379, 0.5751, 0.0563

Inverse Universe

The Inverse Universe completely reimagines the original color for something new.



54.2710, 61.5242, 72.6336



77.7873, 89.7283, 107.8272



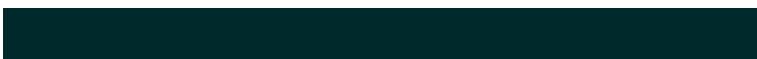
50.1877, 53.3577, 71.2726



12.7285, 13.9803, 15.9651



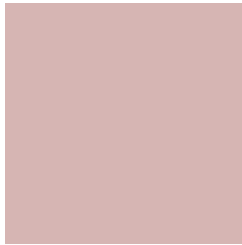
20.0930, 28.4479, 42.8851



1.2309, 1.7537, 2.5929

Previews

White Background



This preview shows how the XYZ color 52.3921, 50.5986, 49.6530 looks on a white background.

Color Contrast Check

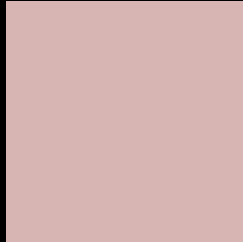
Large Text (above 18pt) WCAG AA × Fail

Any Text WCAG AA × Fail

Large Text (above 18pt) WCAG AAA × Fail

Any Text WCAG AAA × Fail

Black Background



This preview shows how the XYZ color 52.3921, 50.5986, 49.6530 looks on a black background.

Color Contrast Check

Large Text (above 18pt) WCAG AA ✓ Pass

Any Text WCAG AA ✓ Pass

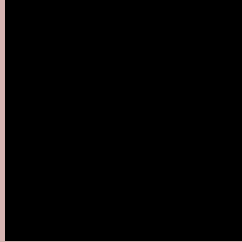
Large Text (above 18pt) WCAG AAA ✓ Pass

Any Text WCAG AAA ✓ Pass

If you want to check with other color combinations, try the [Color Contrast Checker](#).

XYZ 52.3921, 50.5986, 49.6530

Background



This preview shows how black text looks on a background with the XYZ color 52.3921, 50.5986, 49.6530.



This preview shows how white text looks on a background with the XYZ color 52.3921, 50.5986,

49.6530.

Color Blindness Simulation

Color vision deficiency is a very complex topic, and I could not describe the different causes any better than Wikipedia does, so if you want to learn more, you should check out their [article about color blindness](#).

Dichromacy



Original Color

52.3921, 50.5986, 49.6530

Protanopia

48.5228, 50.7228, 52.0328

Deuteranopia

51.7286, 50.5595, 49.6804



Tritanopia

54.0646, 50.6894, 57.3866

Trichromacy



Original Color

52.3921, 50.5986, 49.6530

Protanomaly

49.8799, 50.4928, 51.3731

Deuteranomaly

52.0160, 50.7076, 49.6938

Tritanomaly

53.4227, 50.7204, 54.5513

Monochromacy



Original Color

52.3921, 50.5986, 49.6530

Achromatopsia

49.5206, 52.0996, 56.7364

Achromatomaly

50.2932, 51.2706, 54.2592

CSS Examples

Text

The CSS property to change the color of the text to XYZ 52.3921, 50.5986, 49.6530 is called "color". The color property can be set on classes, ids or directly on the HTML element.

This example shows how text in the color `rgb(214, 181, 179)` looks like.

```
.text, #text, p{  
    color:rgb(214, 181, 179)  
}
```

If you want to add a text shadow in that color use the text-shadow property, you can generate a text shadow directly with our [CSS Text Shadow Generator](#).

Here you see how black text with a 4 pixel rgb(214, 181, 179) colored shadow looks like.

```
.shadow{ text-shadow: 4px 4px 2px rgb(214, 181, 179) }
```

Border

The CSS property to change the border of an element to XYZ 52.3921, 50.5986, 49.6530 is called "border". The border property can be set on classes, ids or directly on the HTML element.

This example shows the color as border, it can be applied via the CSS property "border" or "border-color".

```
.border, #border, table{ border:4px solid rgb(214, 181, 179) }
```


If only the border color should be changed use the property border-color.

```
.border{ border-color:rgb(214, 181, 179) }
```

If you want to add a box shadow in that color use:

Here you see how a box with a 4 pixel rgb(214, 181, 179) colored shadow looks like.

```
.boxshadow{ -moz-box-shadow:4px 4px 4px  
4px rgb(214, 181, 179); -webkit-box-  
shadow:4px 4px 4px 4px rgb(214, 181, 179);  
box-shadow:4px 4px 4px 4px rgb(214, 181,  
179) }
```

Background

The CSS property to change the background color of an element to XYZ 52.3921, 50.5986, 49.6530 is called "background". The background property can be set on classes, ids or directly on the HTML element.

```
.background, #background, body{  
background: rgb(214, 181, 179) }
```

If only the background color should be changed can be used:

```
.background{ background-color: rgb(214,  
181, 179) }
```

This example shows the color as background, it is applied via the CSS property "background".

To optimize and compress your CSS code, you can use our [online CSS compressor and optimizer](#) based on csstidy. If you want to create a linear or radial gradient as background or border, check our [CSS Gradient Generator](#).

Hey! You found this booklet interesting? Support Converting Colors with the new Membership Option!

The pro membership hides all ads, plus gives you double the colors in the color bucket, and more awesome pro features!

[Learn more, Memberships starting at \\$2.50/m!](#)

**Follow me
on Twitter!**

@ConvertingColor