

Converting Colors

XYZ(52.3350, 50.8216, 48.3541)

Have a look what the booklet for
XYZ(52.3350, 50.8216, 48.3541)
contains.

XYZ(52.2960, 50.8866, 48.1401)	3
<i>Conversions</i>	4
<i>Details</i>	6
<i>Harmonies</i>	12
<i>Previews</i>	24
<i>Color Blindness Simulation</i>	28
<i>CSS Examples</i>	31

Color

**XYZ(52.2960, 50.8866,
48.1401)**

Conversions

Conversions Part 1

Format	Color
Hex	D6B6B0
RGB	214, 182, 176
RGB Percent	84%, 71%, 69%
CMY	0.1608, 0.2863, 0.3098
CMYK	0.00, 0.15, 0.18, 0.16
HSL	9°, 32%, 76%
HSV	9°, 18%, 84%
XYZ	52.2960, 50.8866, 48.1401
YIQ	190.8840, 20.9980, 4.9180

Conversions

Conversions Part 2

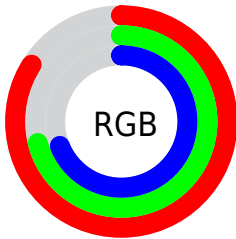
Format	Color
RYB	214, 183, 176
Decimal	14071472
CIELab	76.61, 10.53, 7.31
CIELCh	77, 12.820, 34.766
Yxy	50.8866, 0.3456, 0.3363
Android (android.graphics.Color)	4292261552 (0xFFD6B6B0)
YUV	190.8840, -7.3378, 20.2727
Hunter-Lab	71.3348, 6.0234, 9.9227

Details

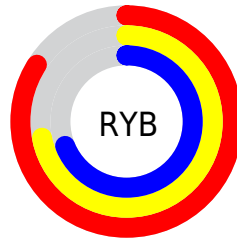
The XYZ color **52.2960, 50.8866, 48.1401** is a light color, and the websafe version is hex **CC9999**. A complement of this color would be **52.5977, 59.1957, 72.2726**, and the grayscale version is **49.4878, 52.0650, 56.6988**.

A 20% lighter version of the original color is **86.3800, 88.2353, 88.8223**, and **25.7864, 24.5267, 22.4438** is the 20% darker color. If you saturate the color by 10%, you get **46.8877, 43.1954, 36.7014**, and if you desaturate by 10%, it is **58.5158, 59.6656, 61.4973**.

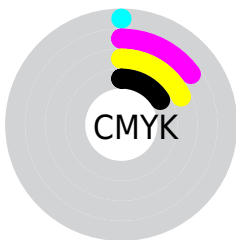
Distribution



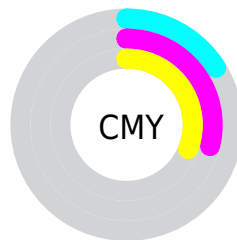
- Red (84%)
- Green (71%)
- Blue (69%)



- Red (84%)
- Yellow (72%)
- Blue (69%)



- Cyan (0%)
- Magenta (15%)
- Yellow (18%)
- Black (16%)





- Cyan (16%)
- Magenta (29%)
- Yellow (31%)

Brightness & Saturation Gradients


These gradients show how the XYZ color 52.2960, 50.8866, 48.1401 changes by changing the brightness by 10 percent. The first figure shows a shift by +10% for each color and the second figure -10%.


Similar to the brightness gradients but the following saturation gradients show a change of the XYZ color 52.2960, 50.8866, 48.1401 by changing the saturation by 10% instead.

 52.2960, 50.8866,
48.1401

 52.2960, 50.8866,
48.1401


385.8835,
390.1230, 395.8719

 37.4663, 36.1184,
33.5771


 92.7393, 91.4871,
88.7807

 25.7441, 24.5256,
22.2942


119.0835,
118.0882, 115.6953

 16.7639, 15.7240,
13.8728


149.9967,
149.4024, 147.5642

 10.1606, 9.3291,
7.8945

185.8441,
185.8140, 184.8060

 5.5686, 4.9564,
3.9407

226.9912,
227.7075, 227.8390

 2.6228, 2.2217,
1.5929

273.8032,

 0.9576, 0.7318,

275.4672, 277.0820

0.2857

326.6455,
329.4776, 332.9535

■ 0.0000, 0.0000,
0.0000

■ 52.2960, 50.8866,
48.1401

■ 52.2960, 50.8866,
48.1401

■ 46.8877, 43.1954,
36.7014

■ 58.5158, 59.6656,
61.4973

■ 42.2532, 36.5429,
27.0898

■ 65.5744, 69.5654,
76.8522

■ 38.3578, 30.8865,
19.2113

■ 73.5032, 80.6261,
94.2835

■ 35.1627, 26.1779,
12.9622

■ 81.2493, 92.4513,
108.1703

■ 32.6254, 22.3647,
8.2277

■ 81.5418, 93.0363,
108.2678

■ 30.6986, 19.3894,
4.8779

■ 29.3285, 17.1877,
2.7609

■ 28.4465, 15.6837,
1.6658

■ 28.2984, 15.4296,
1.4867

Harmonies

Analogous

The Analogous color harmony consists of three colors that are next to each other on the color wheel.



53.1600, 50.8866, 54.3054



52.2960, 50.8866, 48.1401



50.3800, 50.8866, 44.1906

Triad

The Triadic color harmony groups three colors that are evenly spaced from another and form a triangle on the color wheel.



52.2960, 50.8866, 48.1401



44.2723, 50.8866, 49.9101



48.7544, 50.8866, 69.7984

Complementary

The Complementary color scheme is a pair of colors which are on the opposite of each other on the color wheel.



52.2960, 50.8866, 48.1401



52.5977, 59.1957, 72.2726

Split Complementary

Split-complementary colors differ from the complementary color scheme. The scheme consists of three colors, the original color and two neighbors of the complement color.



46.4067, 50.8866, 68.3766



52.2960, 50.8866, 48.1401



43.8696, 50.8866, 56.5231

Square

The Square scheme is like the rectangle color scheme, but the four colors are evenly spaced on the color wheel.



52.2960, 50.8866, 48.1401



45.7574, 50.8866, 45.1511



44.6383, 50.8866, 63.3704



51.0723, 50.8866, 67.1087

Rectangle

The Rectangle color scheme consists of four colors that form a rectangle on the color wheel.



52.2960, 50.8866, 48.1401



48.7925, 50.8866, 43.1515



44.6383, 50.8866, 63.3704



47.9424, 50.8866, 69.7873

Sweetspot

The Sweet Spot groups the original color and five complimentary colors.



52.2974, 50.8889, 48.1412



89.7349, 92.5465, 97.3351



54.6796, 49.9164, 66.6217



19.0526, 19.5919, 20.4991



0.0000, 0.0000, 0.0000



20.3446, 21.4041, 23.3091

Same Dimension

The Same Dimension uses a secret algorithm to generate beautiful new colors.



52.2974, 50.8889, 48.1412



74.8602, 71.5473, 65.4008



56.3854, 59.0649, 49.5038



12.5801, 12.7345, 12.9557



17.1537, 9.4247, 0.9150



1.0853, 0.6699, 0.0721

Inverse Universe

The Inverse Universe completely reimagines the original color for something new.



52.5977, 59.1957, 72.2726



75.3786, 85.9401, 107.2230



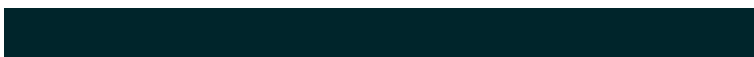
48.3050, 50.6102, 70.8417



12.6173, 13.7581, 15.9281



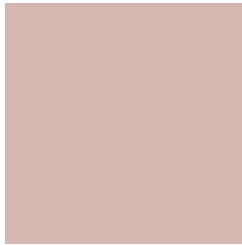
17.2879, 22.8376, 41.9501



1.0886, 1.4693, 2.5455

Previews

White Background



This preview shows how the XYZ color 52.2960, 50.8866, 48.1401 looks on a white background.

Color Contrast Check

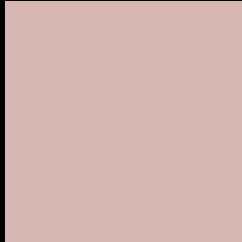
Large Text (above 18pt) WCAG AA × Fail

Any Text WCAG AA × Fail

Large Text (above 18pt) WCAG AAA × Fail

Any Text WCAG AAA × Fail

Black Background



This preview shows how the XYZ color 52.2960, 50.8866, 48.1401 looks on a black background.

Color Contrast Check

Large Text (above 18pt) WCAG AA ✓ Pass

Any Text WCAG AA ✓ Pass

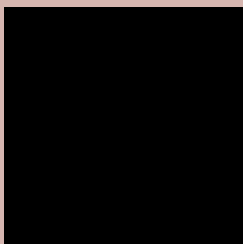
Large Text (above 18pt) WCAG AAA ✓ Pass

Any Text WCAG AAA ✓ Pass

If you want to check with other color combinations, try the [Color Contrast Checker](#).

XYZ 52.2960, 50.8866, 48.1401

Background



This preview shows how black text looks on a background with the XYZ color 52.2960, 50.8866, 48.1401.



This preview shows how white text looks on a background with the XYZ color 52.2960, 50.8866,

Color Blindness Simulation

Color vision deficiency is a very complex topic, and I could not describe the different causes any better than Wikipedia does, so if you want to learn more, you should check out their [article about color blindness](#).

Dichromacy



Original Color

52.2960, 50.8866, 48.1401

Protanopia

48.6256, 50.8232, 49.8948

Deuteranopia

51.9213, 50.9986, 48.1815



Tritanopia

54.0646, 50.6894, 57.3866

Trichromacy



Original Color

52.2960, 50.8866, 48.1401

Protanomaly

49.9519, 50.8887, 49.3092

Deuteranomaly

52.2105, 51.1477, 48.1950

Tritanomaly

53.3152, 50.6774, 53.9854

Monochromacy



Original Color

52.2960, 50.8866, 48.1401

Achromatopsia

49.5206, 52.0996, 56.7364

Achromatomaly

50.3993, 51.6537, 53.7682

CSS Examples

Text

The CSS property to change the color of the text to XYZ 52.2960, 50.8866, 48.1401 is called "color". The color property can be set on classes, ids or directly on the HTML element.

This example shows how text in the color rgb(214, 182, 176) looks like.

```
.text, #text, p{  
    color:rgb(214, 182, 176)  
}
```

If you want to add a text shadow in that color use the text-shadow property, you can generate a text shadow directly with our [CSS Text Shadow Generator](#).

Here you see how black text with a 4 pixel rgb(214, 182, 176) colored shadow looks like.

```
.shadow{ text-shadow: 4px 4px 2px rgb(214, 182, 176) }
```

Border

The CSS property to change the border of an element to XYZ 52.2960, 50.8866, 48.1401 is called "border". The border property can be set on classes, ids or directly on the HTML element.

This example shows the color as border, it can be applied via the CSS property "border" or "border-color".

```
.border, #border, table{ border:4px solid rgb(214, 182, 176) }
```


If only the border color should be changed use the property `border-color`.

```
.border{ border-color:rgb(214, 182, 176) }
```

If you want to add a box shadow in that color use:

Here you see how a box with a 4 pixel `rgb(214, 182, 176)` colored shadow looks like.

```
.boxshadow{ -moz-box-shadow:4px 4px 4px  
4px rgb(214, 182, 176); -webkit-box-  
shadow:4px 4px 4px 4px rgb(214, 182, 176);  
box-shadow:4px 4px 4px 4px rgb(214, 182,  
176) }
```

Background

The CSS property to change the background color of an element to XYZ 52.2960, 50.8866, 48.1401 is called "background". The background property can be set on classes, ids or directly on the HTML element.

```
.background, #background, body{  
background: rgb(214, 182, 176) }
```

If only the background color should be changed can be used:

```
.background{ background-color: rgb(214,  
182, 176) }
```

This example shows the color as background, it is applied via the CSS property "background".

To optimize and compress your CSS code, you can use our [online CSS compressor and optimizer](#) based on csstidy. If you want to create a linear or radial gradient as background or border, check our [CSS Gradient Generator](#).

Hey! You found this booklet interesting? Support Converting Colors with the new Membership Option!

The pro membership hides all ads, plus gives you double the colors in the color bucket, and more awesome pro features!

[Learn more, Memberships starting at \\$2.50/m!](#)

**Follow me
on Twitter!**

@ConvertingColor