

Converting Colors

XYZ(52.3702, 52.7777, 56.8619)

Have a look what the booklet for
XYZ(52.3702, 52.7777, 56.8619)
contains.

XYZ(52.5034, 52.9941, 56.7519)	3
<i>Conversions</i>	4
<i>Details</i>	6
<i>Harmonies</i>	12
<i>Previews</i>	24
<i>Color Blindness Simulation</i>	28
<i>CSS Examples</i>	31

Color

**XYZ(52.5034, 52.9941,
56.7519)**

Conversions

Conversions Part 1

Format	Color
Hex	CCBDBF
RGB	204, 189, 191
RGB Percent	80%, 74%, 75%
CMY	0.2000, 0.2588, 0.2510
CMYK	0.00, 0.07, 0.06, 0.20
HSL	352°, 13%, 77%
HSV	352°, 7%, 80%
XYZ	52.5034, 52.9941, 56.7519
YIQ	193.7130, 8.2980, 3.8020

Conversions

Conversions Part 2

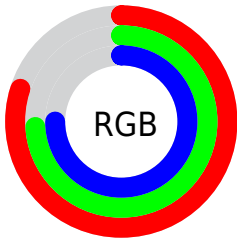
Format	Color
RYB	204, 189, 191
Decimal	13417919
CIELab	77.87, 5.64, 0.89
CIELCh	78, 5.706, 9.002
Yxy	52.9941, 0.3236, 0.3266
Android (android.graphics.Color)	4291607999 (0xFFCCBDBF)
YUV	193.7130, -1.3375, 9.0217
Hunter-Lab	72.7970, 1.3447, 4.7360

Details

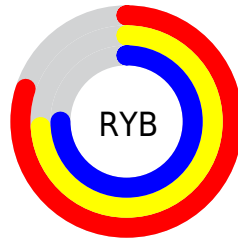
The XYZ color **52.5034, 52.9941, 56.7519** is a light color, and the websafe version is hex **CCCCCC**. A complement of this color would be **53.2418, 58.2702, 64.3210**, and the grayscale version is **51.1140, 53.7759, 58.5619**.

A 20% lighter version of the original color is **90.6809, 93.2802, 101.2212**, and **25.9693, 25.9273, 27.6805** is the 20% darker color. If you saturate the color by 10%, you get **46.5903, 44.0960, 45.7522**, and if you desaturate by 10%, it is **59.2718, 63.2253, 69.1973**.

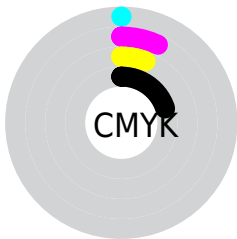
Distribution



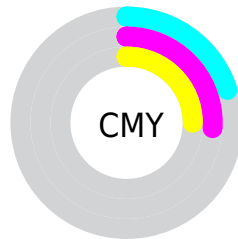
- Red (80%)
- Green (74%)
- Blue (75%)



- Red (80%)
- Yellow (74%)
- Blue (75%)



- Cyan (0%)
- Magenta (7%)
- Yellow (6%)
- Black (20%)



- Cyan (20%)
- Magenta (26%)
- Yellow (25%)

Brightness & Saturation Gradients

These gradients show how the XYZ color 52.5034, 52.9941, 56.7519 changes by changing the brightness by 10 percent. The first figure shows a shift by +10% for each color and the second figure -10%.

Similar to the brightness gradients but the following saturation gradients show a change of the XYZ color 52.5034, 52.9941, 56.7519 by changing the saturation by 10% instead.

■ 52.5034, 52.9941,
56.7519

■ 52.5034, 52.9941,
56.7519

386.6691,
398.2625, 429.9867

■ 37.6324, 37.7981,
40.3981

■ 93.0431, 94.5957,
101.5998

■ 25.8734, 25.8260,
27.5329

119.4424,
121.7700, 130.9310

■ 16.8611, 16.6935,
17.7379

150.4152,
153.7059, 165.4250

■ 10.2302, 10.0162,
10.5945

186.3269,
190.7878, 205.5004

■ 5.6153, 5.4097,
5.6841

227.5428,
233.3999, 251.5757

■ 2.6510, 2.4896,
2.5883

274.4282,

■ 0.9720, 0.8714,

281.9269, 304.0695

0.8864

327.3485,
336.7529, 363.4003

■ 0.0000, 0.0000,
0.0000

■ 52.5034, 52.9941,
56.7519

■ 52.5034, 52.9941,
56.7519

■ 46.5903, 44.0960,
45.7522

■ 59.2718, 63.2253,
69.1973

■ 41.4939, 36.4695,
36.1423

■ 66.9230, 74.8340,
83.1348

■ 37.1796, 30.0584,
27.8678

■ 75.4888, 87.8712,
98.6127

■ 33.6084, 24.7999,
20.8693

■ 78.7122, 91.5775,
108.1354

■ 30.7379, 20.6255,
15.0831

■ 28.5215, 17.4592,
10.4396

■ 26.9067, 15.2153,
6.8625

■ 25.8328, 13.7939,
4.2656

■ 25.2194, 13.0583,
2.5468

Harmonies

Analogous

The Analogous color harmony consists of three colors that are next to each other on the color wheel.



52.3850, 52.9941, 59.9161



52.5034, 52.9941, 56.7519



52.0435, 52.9941, 53.9454

Triad

The Triadic color harmony groups three colors that are evenly spaced from another and form a triangle on the color wheel.



52.5034, 52.9941, 56.7519



49.0401, 52.9941, 53.0878



49.6096, 52.9941, 63.5886

Complementary

The Complementary color scheme is a pair of colors which are on the opposite of each other on the color wheel.



52.5034, 52.9941, 56.7519



53.2418, 58.2702, 64.3210

Split Complementary

Split-complementary colors differ from the complementary color scheme. The scheme consists of three colors, the original color and two neighbors of the complement color.



48.7314, 52.9941, 61.6282



52.5034, 52.9941, 56.7519



48.4060, 52.9941, 55.5423

Square

The Square scheme is like the rectangle color scheme, but the four colors are evenly spaced on the color wheel.



52.5034, 52.9941, 56.7519



50.0366, 52.9941, 51.8815



48.2938, 52.9941, 58.6618



50.7035, 52.9941, 63.9414

Rectangle

The Rectangle color scheme consists of four colors that form a rectangle on the color wheel.



52.5034, 52.9941, 56.7519



51.4747, 52.9941, 52.6269



48.2938, 52.9941, 58.6618



49.2798, 52.9941, 63.0924

Sweetspot

The Sweet Spot groups the original color and five complimentary colors.



52.5049, 52.9964, 56.7530



92.7408, 96.5076, 104.6591



53.4554, 53.3137, 64.6006



19.8745, 20.6932, 22.4458



0.0000, 0.0000, 0.0000



20.3446, 21.4041, 23.3091

Same Dimension

The Same Dimension uses a secret algorithm to generate beautiful new colors.



52.5049, 52.9964, 56.7530



85.1213, 85.0056, 90.5986



53.4920, 55.3199, 56.0053



11.2721, 11.2376, 11.9676



15.8190, 8.1382, 1.4996



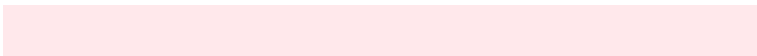
0.8365, 0.4280, 0.1848

Inverse Universe

The Inverse Universe completely reimagines the original color for something new.



52.5049, 52.9964, 56.7530



85.1213, 85.0056, 90.5986



52.1958, 55.7974, 65.1464



11.2721, 11.2376, 11.9676



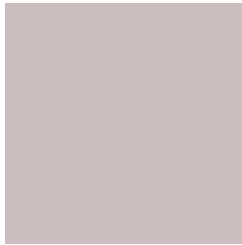
15.8190, 8.1382, 1.4996



0.8365, 0.4280, 0.1848

Previews

White Background



This preview shows how the XYZ color 52.5034, 52.9941, 56.7519 looks on a white background.

Color Contrast Check

Large Text (above 18pt) WCAG AA × Fail

Any Text WCAG AA × Fail

Large Text (above 18pt) WCAG AAA × Fail

Any Text WCAG AAA × Fail

Black Background



This preview shows how the XYZ color 52.5034, 52.9941, 56.7519 looks on a black background.

Color Contrast Check

Large Text (above 18pt) WCAG AA ✓ Pass

Any Text WCAG AA ✓ Pass

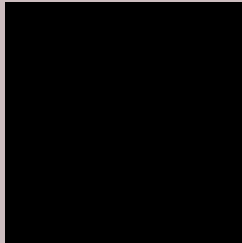
Large Text (above 18pt) WCAG AAA ✓ Pass

Any Text WCAG AAA ✓ Pass

If you want to check with other color combinations, try the [Color Contrast Checker](#).

XYZ 52.5034, 52.9941, 56.7519

Background



This preview shows how black text looks on a background with the XYZ color 52.5034, 52.9941, 56.7519.



This preview shows how white text looks on a background with the XYZ color 52.5034, 52.9941,

Color Blindness Simulation

Color vision deficiency is a very complex topic, and I could not describe the different causes any better than Wikipedia does, so if you want to learn more, you should check out their [article about color blindness](#).

Dichromacy



Original Color

52.5034, 52.9941, 56.7519

Protanopia

51.1290, 53.2408, 57.4509

Deuteranopia

53.9373, 52.7725, 57.2125



Tritanopia

53.8846, 52.9267, 63.2530

Trichromacy



Original Color

52.5034, 52.9941, 56.7519

Protanomaly

51.6984, 53.2095, 57.4148

Deuteranomaly

53.2972, 52.7563, 57.2431

Tritanomaly

53.3531, 53.0228, 60.8485

Monochromacy



Original Color

52.5034, 52.9941, 56.7519

Achromatopsia

51.2775, 53.9479, 58.7493

Achromatomaly

51.7640, 53.5553, 58.0610

CSS Examples

Text

The CSS property to change the color of the text to XYZ 52.5034, 52.9941, 56.7519 is called "color". The color property can be set on classes, ids or directly on the HTML element.

This example shows how text in the color rgb(204, 189, 191) looks like.

```
.text, #text, p{  
    color:rgb(204, 189, 191)  
}
```

If you want to add a text shadow in that color use the text-shadow property, you can generate a text shadow directly with our [CSS Text Shadow Generator](#).

Here you see how black text with a 4 pixel rgb(204, 189, 191) colored shadow looks like.

```
.shadow{ text-shadow: 4px 4px 2px rgb(204, 189, 191) }
```

Border

The CSS property to change the border of an element to XYZ 52.5034, 52.9941, 56.7519 is called "border". The border property can be set on classes, ids or directly on the HTML element.

This example shows the color as border, it can be applied via the CSS property "border" or "border-color".

```
.border, #border, table{ border:4px solid rgb(204, 189, 191) }
```


If only the border color should be changed use the property border-color.

```
.border{ border-color:rgb(204, 189, 191) }
```

If you want to add a box shadow in that color use:

Here you see how a box with a 4 pixel rgb(204, 189, 191) colored shadow looks like.

```
.boxshadow{ -moz-box-shadow:4px 4px 4px  
4px rgb(204, 189, 191); -webkit-box-  
shadow:4px 4px 4px 4px rgb(204, 189, 191);  
box-shadow:4px 4px 4px 4px rgb(204, 189,  
191) }
```

Background

The CSS property to change the background color of an element to XYZ 52.5034, 52.9941, 56.7519 is called "background". The background property can be set on classes, ids or directly on the HTML element.

```
.background, #background, body{  
background: rgb(204, 189, 191) }
```

If only the background color should be changed can be used:

```
.background{ background-color: rgb(204,  
189, 191) }
```

This example shows the color as background, it is applied via the CSS property "background".

To optimize and compress your CSS code, you can use our [online CSS compressor and optimizer](#) based on csstidy. If you want to create a linear or radial gradient as background or border, check our [CSS Gradient Generator](#).

Hey! You found this booklet interesting? Support Converting Colors with the new Membership Option!

The pro membership hides all ads, plus gives you double the colors in the color bucket, and more awesome pro features!

[Learn more, Memberships starting at \\$2.50/m!](#)

**Follow me
on Twitter!**

@ConvertingColor