

Converting Colors

XYZ(52.3705, 51.5182, 49.6294)

Have a look what the booklet for
XYZ(52.3705, 51.5182, 49.6294)
contains.

XYZ(52.4286, 51.5327, 49.8313)	3
<i>Conversions</i>	4
<i>Details</i>	6
<i>Harmonies</i>	12
<i>Previews</i>	24
<i>Color Blindness Simulation</i>	28
<i>CSS Examples</i>	31

Color

**XYZ(52.4286, 51.5327,
49.8313)**

Conversions

Conversions Part 1

Format	Color
Hex	D4B8B3
RGB	212, 184, 179
RGB Percent	83%, 72%, 70%
CMY	0.1686, 0.2784, 0.2980
CMYK	0.00, 0.13, 0.16, 0.17
HSL	9°, 28%, 77%
HSV	9°, 16%, 83%
XYZ	52.4286, 51.5327, 49.8313
YIQ	191.8020, 18.2930, 4.3810

Conversions

Conversions Part 2

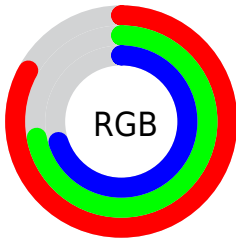
Format	Color
RYB	212, 185, 179
Decimal	13940915
CIELab	77.00, 9.19, 6.22
CIElCh	77, 11.101, 34.074
Yxy	51.5327, 0.3409, 0.3351
Android (android.graphics.Color)	4292130995 (0xFFD4B8B3)
YUV	191.8020, -6.3114, 17.7136
Hunter-Lab	71.7863, 4.7402, 9.0935

Details

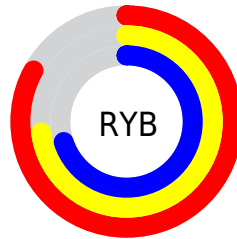
The XYZ color **52.4286, 51.5327, 49.8313** is a light color, and the websafe version is hex **CCCCCC**. A complement of this color would be **52.7866, 58.9616, 70.8866**, and the grayscale version is **50.0168, 52.6216, 57.3049**.

A 20% lighter version of the original color is **87.3955, 89.5783, 91.2814**, and **25.7868, 24.9071, 23.1871** is the 20% darker color. If you saturate the color by 10%, you get **46.9459, 43.7385, 38.2262**, and if you desaturate by 10%, it is **58.7189, 60.4134, 63.3332**.

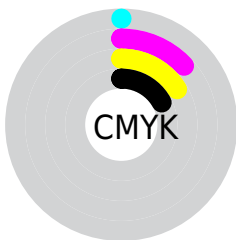
Distribution



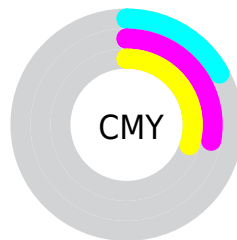
- Red (83%)
- Green (72%)
- Blue (70%)



- Red (83%)
- Yellow (73%)
- Blue (70%)



- Cyan (0%)
- Magenta (13%)
- Yellow (16%)
- Black (17%)



- Cyan (17%)
- Magenta (28%)
- Yellow (30%)

Brightness & Saturation Gradients

These gradients show how the XYZ color 52.4286, 51.5327, 49.8313 changes by changing the brightness by 10 percent. The first figure shows a shift by +10% for each color and the second figure -10%.

Similar to the brightness gradients but the following saturation gradients show a change of the XYZ color 52.4286, 51.5327, 49.8313 by changing the saturation by 10% instead.

■ 52.4286, 51.5327,
49.8313

■ 52.4286, 51.5327,
49.8313

386.3859,
392.6299, 402.7220

■ 37.5725, 36.6327,
34.9091

■ 92.9335, 92.4417,
91.3186

■ 25.8267, 24.9233,
23.3099

119.3130,
119.2195, 118.7208

■ 16.8261, 16.0199,
14.6150

150.2643,
150.7254, 151.1201

■ 10.2051, 9.5382,
8.4061

186.1528,
187.3438, 188.9351

■ 5.5985, 5.0939,
4.2644

227.3439,
229.4591, 232.5842

■ 2.6408, 2.3025,
1.7715

274.2028,

■ 0.9668, 0.7750,

277.4556, 282.4860

0.4090

327.0950,
331.7177, 339.0591

■ 0.0000, 0.0000,
0.0000

■ 52.4286, 51.5327,
49.8313

■ 52.4286, 51.5327,
49.8313

■ 46.9459, 43.7385,
38.2262

■ 58.7189, 60.4134,
63.3332

■ 42.2337, 36.9824,
28.4295

■ 65.8433, 70.4129,
78.8081

■ 38.2584, 31.2225,
20.3510

■ 73.8325, 81.5709,
96.3323

■ 34.9822, 26.4112,
13.8911

■ 80.9617, 92.7372,
108.2407

■ 32.3639, 22.4975,
8.9401

■ 30.3578, 19.4249,
5.3747

■ 28.9122, 17.1309,
3.0516

■ 27.9660, 15.5436,
1.7962

■ 27.6721, 15.0381,
1.4442

Harmonies

Analogous

The Analogous color harmony consists of three colors that are next to each other on the color wheel.



53.1522, 51.5327, 55.2864



52.4286, 51.5327, 49.8313



50.7809, 51.5327, 46.2687

Triad

The Triadic color harmony groups three colors that are evenly spaced from another and form a triangle on the color wheel.



52.4286, 51.5327, 49.8313



45.4111, 51.5327, 51.1681



49.2700, 51.5327, 68.5554

Complementary

The Complementary color scheme is a pair of colors which are on the opposite of each other on the color wheel.



52.4286, 51.5327, 49.8313



52.7866, 58.9616, 70.8866

Split Complementary

Split-complementary colors differ from the complementary color scheme. The scheme consists of three colors, the original color and two neighbors of the complement color.



47.2227, 51.5327, 67.2570



52.4286, 51.5327, 49.8313



45.0326, 51.5327, 56.9424

Square

The Square scheme is like the rectangle color scheme, but the four colors are evenly spaced on the color wheel.



52.4286, 51.5327, 49.8313



46.7357, 51.5327, 47.0007



45.6866, 51.5327, 62.8959



51.2956, 51.5327, 66.3271

Rectangle

The Rectangle color scheme consists of four colors that form a rectangle on the color wheel.



52.4286, 51.5327, 49.8313



49.4016, 51.5327, 45.2991



45.6866, 51.5327, 62.8959



48.5614, 51.5327, 68.5179

Sweetspot

The Sweet Spot groups the original color and five complimentary colors.



52.4300, 51.5350, 49.8324



89.7105, 92.4976, 97.3270



54.5407, 50.7454, 65.9844



19.0467, 19.5801, 20.4971



0.0000, 0.0000, 0.0000



20.3446, 21.4041, 23.3091

Same Dimension

The Same Dimension uses a secret algorithm to generate beautiful new colors.



52.4300, 51.5350, 49.8324



76.4679, 73.7838, 68.9549



56.0474, 58.7697, 51.0382



12.5738, 12.7217, 12.9535



17.1293, 9.3757, 0.9069



1.0823, 0.6639, 0.0711

Inverse Universe

The Inverse Universe completely reimagines the original color for something new.



52.7866, 58.9616, 70.8866



77.1175, 87.3426, 107.4020



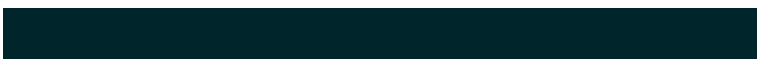
49.0076, 51.4035, 69.6269



12.6243, 13.7720, 15.9304



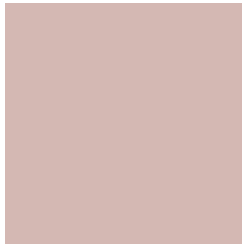
17.4532, 23.1681, 42.0052



1.0971, 1.4863, 2.5484

Previews

White Background



This preview shows how the XYZ color 52.4286, 51.5327, 49.8313 looks on a white background.

Color Contrast Check

Large Text (above 18pt) WCAG AA × Fail

Any Text WCAG AA × Fail

Large Text (above 18pt) WCAG AAA × Fail

Any Text WCAG AAA × Fail

Black Background



This preview shows how the XYZ color 52.4286, 51.5327, 49.8313 looks on a black background.

Color Contrast Check

Large Text (above 18pt) WCAG AA ✓ Pass

Any Text WCAG AA ✓ Pass

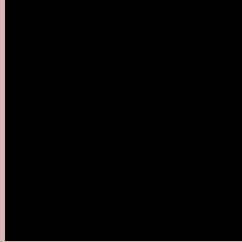
Large Text (above 18pt) WCAG AAA ✓ Pass

Any Text WCAG AAA ✓ Pass

If you want to check with other color combinations, try the [Color Contrast Checker](#).

XYZ 52.4286, 51.5327, 49.8313

Background



This preview shows how black text looks on a background with the XYZ color 52.4286, 51.5327, 49.8313.



This preview shows how white text looks on a background with the XYZ color 52.4286, 51.5327,

Color Blindness Simulation

Color vision deficiency is a very complex topic, and I could not describe the different causes any better than Wikipedia does, so if you want to learn more, you should check out their [article about color blindness](#).

Dichromacy



Original Color

52.4286, 51.5327, 49.8313

Protanopia

49.4060, 51.5084, 51.5941

Deuteranopia

52.7177, 51.6818, 49.8449



Tritanopia

54.2192, 51.3294, 59.2745

Trichromacy



Original Color

52.4286, 51.5327, 49.8313

Protanomaly

50.4679, 51.4334, 50.9838

Deuteranomaly

52.7177, 51.6818, 49.8449

Tritanomaly

53.4628, 51.3197, 55.8031

Monochromacy



Original Color

52.4286, 51.5327, 49.8313

Achromatopsia

50.1023, 52.7115, 57.4028

Achromatomaly

50.7204, 52.1252, 54.4016

CSS Examples

Text

The CSS property to change the color of the text to XYZ 52.4286, 51.5327, 49.8313 is called "color". The color property can be set on classes, ids or directly on the HTML element.

This example shows how text in the color rgb(212, 184, 179) looks like.

```
.text, #text, p{  
    color:rgb(212, 184, 179)  
}
```

If you want to add a text shadow in that color use the text-shadow property, you can generate a text shadow directly with our [CSS Text Shadow Generator](#).

Here you see how black text with a 4 pixel rgb(212, 184, 179) colored shadow looks like.

```
.shadow{ text-shadow: 4px 4px 2px rgb(212, 184, 179) }
```

Border

The CSS property to change the border of an element to XYZ 52.4286, 51.5327, 49.8313 is called "border". The border property can be set on classes, ids or directly on the HTML element.

This example shows the color as border, it can be applied via the CSS property "border" or "border-color".

```
.border, #border, table{ border:4px solid rgb(212, 184, 179) }
```


If only the border color should be changed use the property `border-color`.

```
.border{ border-color:rgb(212, 184, 179) }
```

If you want to add a box shadow in that color use:

Here you see how a box with a 4 pixel `rgb(212, 184, 179)` colored shadow looks like.

```
.boxshadow{ -moz-box-shadow:4px 4px 4px  
4px rgb(212, 184, 179); -webkit-box-  
shadow:4px 4px 4px 4px rgb(212, 184, 179);  
box-shadow:4px 4px 4px 4px rgb(212, 184,  
179) }
```

Background

The CSS property to change the background color of an element to XYZ 52.4286, 51.5327, 49.8313 is called "background". The background property can be set on classes, ids or directly on the HTML element.

```
.background, #background, body{  
background: rgb(212, 184, 179) }
```

If only the background color should be changed can be used:

```
.background{ background-color: rgb(212,  
184, 179) }
```

This example shows the color as background, it is applied via the CSS property "background".

To optimize and compress your CSS code, you can use our [online CSS compressor and optimizer](#) based on csstidy. If you want to create a linear or radial gradient as background or border, check our [CSS Gradient Generator](#).

Hey! You found this booklet interesting? Support Converting Colors with the new Membership Option!

The pro membership hides all ads, plus gives you double the colors in the color bucket, and more awesome pro features!

[Learn more, Memberships starting at \\$2.50/m!](#)

**Follow me
on Twitter!**

@ConvertingColor