

Converting Colors

XYZ(52.3874, 51.0972, 53.9244)

Have a look what the booklet for
XYZ(52.3874, 51.0972, 53.9244)
contains.

XYZ(52.4815, 51.1565, 54.1218)	3
<i>Conversions</i>	4
<i>Details</i>	6
<i>Harmonies</i>	12
<i>Previews</i>	24
<i>Color Blindness Simulation</i>	28
<i>CSS Examples</i>	31

Color

**XYZ(52.4815, 51.1565,
54.1218)**

Conversions

Conversions Part 1

Format	Color
Hex	D2B7BB
RGB	210, 183, 187
RGB Percent	82%, 72%, 73%
CMY	0.1765, 0.2823, 0.2667
CMYK	0.00, 0.13, 0.11, 0.18
HSL	351°, 23%, 77%
HSV	351°, 13%, 82%
XYZ	52.4815, 51.1565, 54.1218
YIQ	191.5290, 14.8080, 6.9680

Conversions

Conversions Part 2

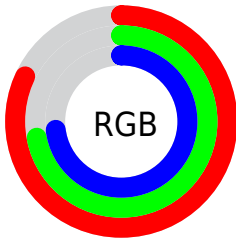
Format	Color
R _Y B	210, 183, 187
Decimal	13809595
CIE Lab	76.77, 10.31, 1.53
CIE LCh	77, 10.423, 8.418
Yxy	51.1565, 0.3327, 0.3243
Android (android.graphics.Color)	4291999675 (0xFFD2B7BB)
YUV	191.5290, -2.2328, 16.1991
Hunter-Lab	71.5238, 5.8101, 5.2021

Details

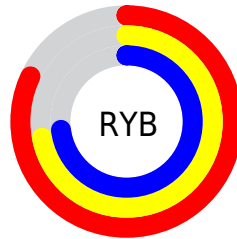
The XYZ color **52.4815, 51.1565, 54.1218** is a light color, and the websafe version is hex **CCCCCC**. A complement of this color would be **53.7177, 60.6180, 67.2648**, and the grayscale version is **49.8362, 52.4316, 57.0980**.

A 20% lighter version of the original color is **88.2842, 89.4641, 97.4092**, and **25.8033, 24.6551, 25.9532** is the 20% darker color. If you saturate the color by 10%, you get **46.6716, 42.4129, 43.3168**, and if you desaturate by 10%, it is **59.1792, 61.2926, 66.4013**.

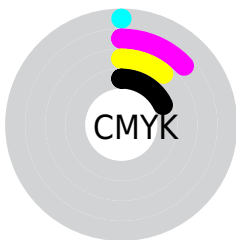
Distribution



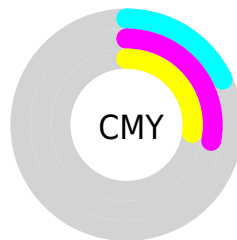
- Red (82%)
- Green (72%)
- Blue (73%)



- Red (82%)
- Yellow (72%)
- Blue (73%)



- Cyan (0%)
- Magenta (13%)
- Yellow (11%)
- Black (18%)



- Cyan (18%)
- Magenta (28%)
- Yellow (27%)

Brightness & Saturation Gradients

These gradients show how the XYZ color 52.4815, 51.1565, 54.1218 changes by changing the brightness by 10 percent. The first figure shows a shift by +10% for each color and the second figure -10%.

Similar to the brightness gradients but the following saturation gradients show a change of the XYZ color 52.4815, 51.1565, 54.1218 by changing the saturation by 10% instead.

■ 52.4815, 51.1565,
54.1218

■ 52.4815, 51.1565,
54.1218

386.5862,
391.1715, 419.7620

■ 37.6148, 36.3332,
38.3052

■ 93.0110, 91.8861,
97.7113

■ 25.8597, 24.6916,
25.9160

119.4045,
118.5611, 126.3212

■ 16.8509, 15.8475,
16.5356

150.3711,
149.9555, 160.0327

■ 10.2229, 9.4163,
9.7455

186.2759,
186.4536, 199.2643

■ 5.6104, 5.0137,
5.1272

227.4845,
228.4399, 244.4344

■ 2.6480, 2.2553,
2.2620

274.3622,

■ 0.9705, 0.7499,

276.2987, 295.9618

0.7098

327.2743,
330.4144, 354.2648

■ 0.0000, 0.0000,
0.0000

■ 52.4815, 51.1565,
54.1218

■ 52.4815, 51.1565,
54.1218

■ 46.6716, 42.4129,
43.3168

■ 59.1792, 61.2926,
66.4013

■ 41.7079, 34.9944,
33.9275

■ 66.7955, 72.8712,
80.2047

■ 37.5519, 28.8384,
25.8960

■ 75.3648, 85.9481,
95.5829

■ 34.1605, 23.8742,
19.1590

■ 80.3886, 92.4418,
108.2139

■ 31.4865, 20.0245,
13.6482

■ 29.4771, 17.2025,
9.2890

■ 28.0726, 15.3090,
5.9984

■ 27.2017, 14.2244,
3.6819

■ 26.8271, 13.8012,
2.5522

Harmonies

Analogous

The Analogous color harmony consists of three colors that are next to each other on the color wheel.



52.2445, 51.1565, 59.8025



52.4815, 51.1565, 54.1218



51.6628, 51.1565, 49.2049

Triad

The Triadic color harmony groups three colors that are evenly spaced from another and form a triangle on the color wheel.



52.4815, 51.1565, 54.1218



46.2982, 51.1565, 47.5978



47.2376, 51.1565, 66.4518

Complementary

The Complementary color scheme is a pair of colors which are on the opposite of each other on the color wheel.



52.4815, 51.1565, 54.1218



53.7177, 60.6180, 67.2648

Split Complementary

Split-complementary colors differ from the complementary color scheme. The scheme consists of three colors, the original color and two neighbors of the complement color.



45.7043, 51.1565, 62.7445



52.4815, 51.1565, 54.1218



45.1723, 51.1565, 51.7909

Square

The Square scheme is like the rectangle color scheme, but the four colors are evenly spaced on the color wheel.



52.4815, 51.1565, 54.1218



48.0682, 51.1565, 45.6089



44.9579, 51.1565, 57.3101



49.1815, 51.1565, 67.1811

Rectangle

The Rectangle color scheme consists of four colors that form a rectangle on the color wheel.



52.4815, 51.1565, 54.1218



50.6411, 51.1565, 46.9303



44.9579, 51.1565, 57.3101



46.6587, 51.1565, 65.5010

Sweetspot

The Sweet Spot groups the original color and five complimentary colors.



52.4829, 51.1588, 54.1229



90.5141, 93.1167, 100.6411



54.0077, 51.6372, 68.0939



19.1967, 19.6625, 21.2181



0.0000, 0.0000, 0.0000



20.3446, 21.4041, 23.3091

Same Dimension

The Same Dimension uses a secret algorithm to generate beautiful new colors.



52.4829, 51.1588, 54.1229



79.2286, 76.0530, 79.9011



54.0758, 55.0197, 52.5723



11.8790, 11.8364, 12.6388



16.3869, 8.4276, 1.6778



0.9396, 0.4806, 0.2167

Inverse Universe

The Inverse Universe completely reimagines the original color for something new.



52.4829, 51.1588, 54.1229



79.2286, 76.0530, 79.9011



51.9451, 56.2860, 69.0999



11.8790, 11.8364, 12.6388



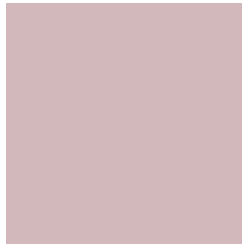
16.3869, 8.4276, 1.6778



0.9396, 0.4806, 0.2167

Previews

White Background



This preview shows how the XYZ color 52.4815, 51.1565, 54.1218 looks on a white background.

Color Contrast Check

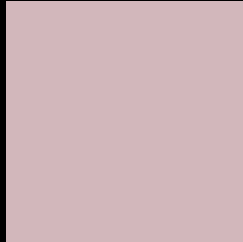
Large Text (above 18pt) WCAG AA × Fail

Any Text WCAG AA × Fail

Large Text (above 18pt) WCAG AAA × Fail

Any Text WCAG AAA × Fail

Black Background



This preview shows how the XYZ color 52.4815, 51.1565, 54.1218 looks on a black background.

Color Contrast Check

Large Text (above 18pt) WCAG AA ✓ Pass

Any Text WCAG AA ✓ Pass

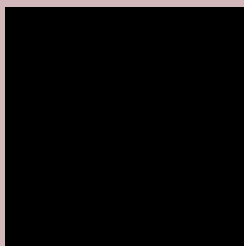
Large Text (above 18pt) WCAG AAA ✓ Pass

Any Text WCAG AAA ✓ Pass

If you want to check with other color combinations, try the [Color Contrast Checker](#).

XYZ 52.4815, 51.1565, 54.1218

Background



This preview shows how black text looks on a background with the XYZ color 52.4815, 51.1565, 54.1218.



This preview shows how white text looks on a background with the XYZ color 52.4815, 51.1565,

Color Blindness Simulation

Color vision deficiency is a very complex topic, and I could not describe the different causes any better than Wikipedia does, so if you want to learn more, you should check out their [article about color blindness](#).

Dichromacy



Original Color

52.4815, 51.1565, 54.1218

Protanopia

49.4842, 51.4504, 56.0380

Deuteranopia

52.1976, 51.0101, 54.1085



Tritanopia

53.5557, 51.2903, 59.3019

Trichromacy



Original Color

52.4815, 51.1565, 54.1218

Protanomaly

50.5088, 51.3569, 55.3949

Deuteranomaly

52.1976, 51.0101, 54.1085

Tritanomaly

53.2176, 51.1550, 57.5211

Monochromacy



Original Color

52.4815, 51.1565, 54.1218

Achromatopsia

50.1023, 52.7115, 57.4028

Achromatomaly

51.0450, 52.2550, 56.1111

CSS Examples

Text

The CSS property to change the color of the text to XYZ 52.4815, 51.1565, 54.1218 is called "color". The color property can be set on classes, ids or directly on the HTML element.

This example shows how text in the color rgb(210, 183, 187) looks like.

```
.text, #text, p{  
    color:rgb(210, 183, 187)  
}
```

If you want to add a text shadow in that color use the text-shadow property, you can generate a text shadow directly with our [CSS Text Shadow Generator](#).

Here you see how black text with a 4 pixel rgb(210, 183, 187) colored shadow looks like.

```
.shadow{ text-shadow: 4px 4px 2px rgb(210, 183, 187) }
```

Border

The CSS property to change the border of an element to XYZ 52.4815, 51.1565, 54.1218 is called "border". The border property can be set on classes, ids or directly on the HTML element.

This example shows the color as border, it can be applied via the CSS property "border" or "border-color".

```
.border, #border, table{ border:4px solid rgb(210, 183, 187) }
```


If only the border color should be changed use the property `border-color`.

```
.border{ border-color:rgb(210, 183, 187) }
```

If you want to add a box shadow in that color use:

Here you see how a box with a 4 pixel `rgb(210, 183, 187)` colored shadow looks like.

```
.boxshadow{ -moz-box-shadow:4px 4px 4px  
4px rgb(210, 183, 187); -webkit-box-  
shadow:4px 4px 4px 4px rgb(210, 183, 187);  
box-shadow:4px 4px 4px 4px rgb(210, 183,  
187) }
```

Background

The CSS property to change the background color of an element to XYZ 52.4815, 51.1565, 54.1218 is called "background". The background property can be set on classes, ids or directly on the HTML element.

```
.background, #background, body{  
background: rgb(210, 183, 187) }
```

If only the background color should be changed can be used:

```
.background{ background-color: rgb(210,  
183, 187) }
```

This example shows the color as background, it is applied via the CSS property "background".

To optimize and compress your CSS code, you can use our [online CSS compressor and optimizer](#) based on csstidy. If you want to create a linear or radial gradient as background or border, check our [CSS Gradient Generator](#).

Hey! You found this booklet interesting? Support Converting Colors with the new Membership Option!

The pro membership hides all ads, plus gives you double the colors in the color bucket, and more awesome pro features!

[Learn more, Memberships starting at \\$2.50/m!](#)

**Follow me
on Twitter!**

@ConvertingColor